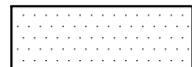


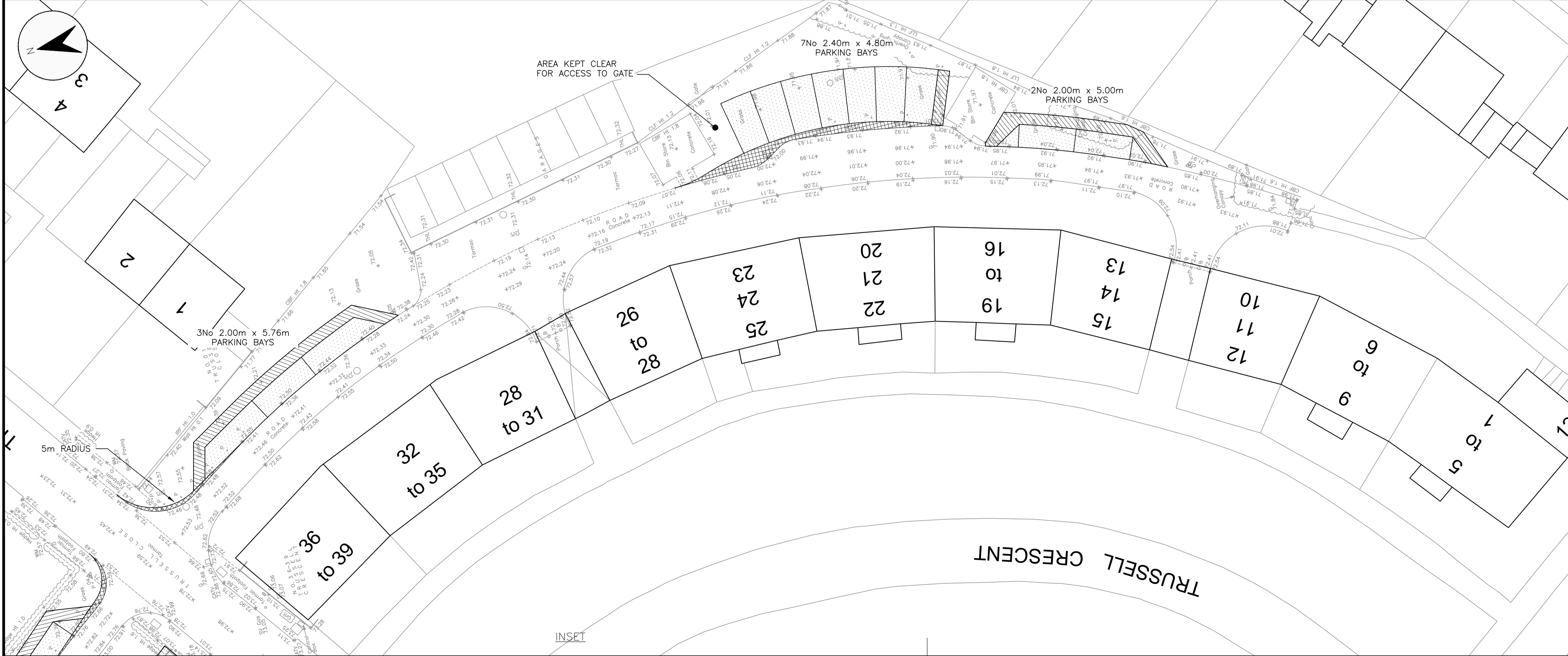
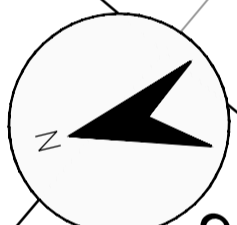


© Crown copyright and database rights
Winchester City Council license 100019531

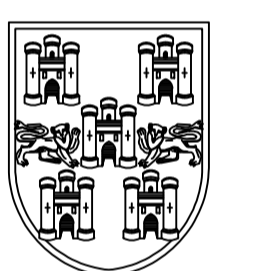
- NOTES**
1. THIS DRAWING IS INDICATIVE ONLY & SHOULD NOT BE SCALED.
 2. ALL DIMENSIONS & CHAINAGES ARE IN METRES.

LEGEND

-  PROPOSED CAR PARKING BAY CONSTRUCTION
-  PROPOSED TYPE 1A FOOTWAY CONSTRUCTION
-  PROPOSED CARRIAGEWAY HAUNCH WIDENING



Rev	Description	Date	Drawn



Winchester

City Council

OPERATIONS GROUP
BUILT ENVIRONMENT
City Offices
Colebrook Street
Winchester,
SO23 9LJ.

Project:	TRUSSELL CRESCENT
Title:	SCHEME LAYOUT

Scale: 1:200 @ A1	Date: 30/06/16
Drawn: MCH	Checked: CJE
DRG. No. WCC/RPF/173/002	Status: