

CABINET

17 JANUARY 2007

LOCAL DEVELOPMENT SCHEME 2007

REPORT OF THE CHIEF EXECUTIVE

Contact Officer: Joan Ashton Tel No: 01962 848442

RECENT REFERENCES:

CAB1217 – 'Winchester District Local Development Scheme (Revised)'- Cabinet 1 March 2006

EXECUTIVE SUMMARY:

The Council is required to produce a Local Development Scheme (LDS) that provides a programme for the production of the Council's Local Development Framework (LDF) for the next three years. The Council has an existing LDS adopted in April 2006.

It has become clear that it would be expedient to update the LDS to reflect changes that have occurred during the past year and to introduce new elements that are required for the LDF. This report therefore proposes a revised LDS for implementation as from March 2007, which will cover the period March 2007 – March 2010.

This report outlines the changes that are being proposed and described the reasons for the proposed changes. The proposed revised 2007 LDS is appended to this report.

RECOMMENDATIONS:

- 1 That the Revised Winchester District Local Development Scheme, attached at Appendix A to this report, be approved for submission to the Government Office for the South East.
- 2 That the Chief Executive be given delegated authority in consultation with the Portfolio Holder for Planning and Transport to agree any minor changes which may be needed to address issues raised by the Government Office for the South East.

## CABINET

17 January 2007

### LOCAL DEVELOPMENT SCHEME 2007

#### DETAIL:

#### 1 Introduction

- 1.1 The Local Development Scheme (LDS) is a three year rolling programme for the production of Local Development Documents (LDD) under the new planning system of Local Development Frameworks (LDF) introduced in the 2004 Planning and Compulsory Purchase Act. The preparation of a Local Development Scheme (LDS) is a statutory requirement and the Council's first LDS was published in March 2005.
- 1.2 The LDS outlines what new documents will be prepared which will form the LDF, together with any documents, such as the Winchester District Local Plan Review (WDLPR), which are to be 'saved' until replaced by new LDDs. The LDS includes a supporting statement which describes the approach taken to developing the LDF. It contains a summary of how the evidence base will be managed including its links with other strategies. The role of Strategic Environmental Assessment and Sustainability Appraisal in the production of LDDs is described. The Scheme explains how monitoring and review of the LDS will be carried out. The programme outlines the resources required for the LDF and includes a risk assessment.
- 1.3 Local planning authorities are required to keep the LDS up-to-date. Following monitoring in December 2005, the Council updated Winchester's LDS in March 2006 (CAB 1217, 1March 2006 refers). It is now considered necessary to make further updates to the scheme, which it is planned to implement from March 2007.
- 1.4 This report details the reasons behind the changes being proposed and summarises those changes. The proposed revised (2007) LDS is attached as an Appendix to this report. Following Cabinet approval, the revised LDS will be submitted to the GOSE and, subject to any revisions they may require, will come into effect 4 weeks after the submission.
- 1.5 The proposed 2007 LDS is attached as an Appendix to this report. There are too many changes to the text to illustrate them in the Appendix. This report outlines the main changes that have been made and the previous version of the Scheme, dating from March 2006, is available for inspection on the internet or as hard copies from Strategic Planning Section, should Members want to compare the two.

#### 2 BACKGROUND TO CHANGES TO THE LDS

- 2.1 Several changes are proposed to the LDS. The most important are those relating to new or amended Local Development Documents. There are four main reasons why changes are being proposed to these.
- 2.2 Firstly, the process of monitoring has identified some slippages within the programme that will need to be addressed. The Annual Monitoring Report (AMR) provides a detailed analysis of progress on the LDS and how the planning process has adhered to the timetable outlined within it. It identifies a number of slippages that need to be addressed in the area of the production of Supplementary Planning Documents

(SPD). A revised timetable for the adoption of these documents is shown at Table 1 within the AMR. The timetables for some of the remaining SPDs have also been extended in order to avoid similar problems occurring in the future as far as possible. The AMR also highlights where some additional LDDs need to be produced.

- 2.3 The second reason for changes being proposed in the timetable relates to emerging knowledge of the requirements and processes of the new planning system. Planning Inspectors' decisions on Lichfield and Stafford Core Strategies have highlighted areas of concern for local planning authorities. As a result of these decisions the DCLG sent a letter to Chief Planning Officers stressing the importance of a robust and comprehensive evidence base. Analysing these decisions, it is considered that more time needs to be allowed for the development of the evidence base. Furthermore, the recent release of PPS25, the draft supplement to PPS1 on climate change, PPS3 and the second Barker Report have also highlighted additional areas of concern for the Core Strategy and its evidence base. Therefore it is proposed that Winchester's 2007 revised LDS allows greater time for the evidence-gathering or 'front-loading' phase.
- 2.4 The third reason for changes to the LDS is the emerging Regional Spatial Strategy (RSS), entitled the South East Plan. The Plan is at the Examination in Public stage, with approval by the Secretary of State expected in March 2008. It is likely that Winchester Council will be involved in the development of Area Action Plans for proposed housing development areas (entitled SDAs) at North/North East of Hedge End and possibly North of Fareham, and also for an urban extension at Whiteley. Although the exact scale and location of these housing areas and the precise involvement of the Council is not yet clear, it is considered expedient to make some allowance for this within the LDS.
- 2.5 The final reason for changes to the LDS is the need for additional documents that has arisen during the past year, or which it is anticipated will be needed during the lifetime of the LDS. Some additional SPDs are required in the areas of affordable housing, historic buildings and additional Village Design Statements.
- 2.6 Therefore several changes are proposed to the LDS. Councils are required to keep their LDS up to date. In December 2006, the DCLG issued further guidance stating that any further revisions to LDSs before April 2007 should be treated as the finalised versions of the LDS. Any additional changes would only be considered in exceptional circumstances, justified to, and agreed by the GOSE. Therefore, it is important that these changes to the LDS are considered fully in order to produce a suitably flexible and realistic LDS for the next three years.
- 2.7 Notwithstanding the recent guidance, it is considered that there may be a need to produce new documents within the next three years, which cannot be identified at present. The production of the South East Plan in particular is likely to result in additional work for the Council, which cannot be specified at the current time. If and when the need for such documents arises, the Council will have to approach GOSE for further guidance.

### 3 SUMMARY OF CHANGES PROPOSED TO LDS

#### 3.1 **Removal of certain Local Development Documents.**

The LDS represents a work programme for the following three year period. As the LDDs listed below have all now been adopted by the Council, they are

no longer described within the LDD Profiles, nor the Gantt Chart work programme. They remain part of the LDF itself as formally adopted:

- *Winchester District Local Plan Review (WDLPR) DPD;*
- *Statement of Community involvement (SCI) special LDD;*
- *Implementation of Local (Housing) Reserve Sites Policy SPD;*
- *Implementation of Infilling Policy SPD;*
- *Local Area Design Statements (LADS) SPD (Sleepers Hill, Compton Down & Springvale Rd);*
- *Village Design Statements (VDS) SPD (Denmead, Kings Worthy);*
- *Neighbourhood Design Statement (NDS) SPD St Barnabas West (formerly Teg Down).*

### 3.2 **Amendments to Development Plan Document work programmes.**

Changes are proposed as follows:

- *Core Strategy.* Extension of pre-production and production periods, adoption extended by 6 months to December 2009;
- *Development Provision and Allocations.* Extension of production period, adoption extended by one year to May 2012;
- *Development Control Policies.* Extension of production period, adoption extended by 6 months to May 2012

3.3 The timetable for the production of the Core Strategy has been extensively revised, as discussed above. The pre-production work on this comprises the evidence-gathering and early, informal, stakeholder consultations. This work has already begun and will continue throughout the production of the 'Issues and Options' version of the Core Strategy until June 2007. Consultation on Issues and Options will therefore now be from July – December 2007 ending with the publication of the Preferred Options. The consultation on the preferred options and associated work will run from January – August 2008, with formal submission in September. It is now considered that the public examination is likely to be April – May 2009, with the adoption of the Core Strategy by December 2009.

3.4 This timetable will need to be agreed by GOSE and the Planning Inspectorate (PINs) as the timetable affects their work. It will also be necessary to extend the period of relevant saved polices within the WDLPR, which would otherwise expire in July 2009, until December of that year. Such extension is possible, with the agreement of the Secretary of State.

3.5 It is considered that the Development Provision and Allocations DPD will require more time for preparation and consultation than was originally allowed, particularly in relation to the public consultation and the consideration of representations on the document. This will push the submission of the document back to February 2010. It

is also considered necessary to allow more time to consider responses to this document, in particular to allow for a second consultation period on new sites arising for consideration following the initial consultation. This period will therefore be extended from March – October 2010. It is considered that the examination will therefore be in July – November 2011, with adoption in May 2012. This will also need to be agreed by GOSE and PINs.

- 3.6 It is also considered appropriate to allow more time to consider the responses on the preferred options stage of the Development Control Policies DPD. This period will be extended to run from January – August 2010. This means that submission will be in September 2010. It is considered that the examination will now run from July – November 2011. Although this represents a five month delay, it would allow for the running of a joint examination with the Housing Provision DPD, if PINs agree to this timetable.
- 3.7 **Regional Spatial Strategy.** As discussed in paragraphs 2.4 and 2.7 above, resources will need to be made available for work in association with the proposed Strategic Development Areas in the South East Plan. However, as yet the extent and precise timing of this work is not known. It is recommended that the LDS therefore proposes that this is anticipated within the LDS Supporting Statement and that a timeline is made available within the Gantt chart to be completed when the details are known. At such a time a Local Development Document would be drawn up for any Action Area Plans that are required, and GOSE will be approached for advice as to how best to incorporate the changes within the LDS.

3.8 **Changes to proposed SPDs.**

New SPDs as follows:

- *Development of Affordable Housing.* Adoption November 2007;
- *Colour in the Historic Environment.* Adoption December 2007;
- *Compton and Shawford VDS.* Adoption July 2008;
- *Otterbourne VDS.* Adoption December 2007.

Amendments to the timetables of existing proposed SPDS:

- *Olivers Battery VDS.* New adoption date – November 2007;
- *New Alresford VDS.* New adoption date - July 2007;
- *West Fulflood/Orams Arbour NDS.* New adoption date - July 2007.

- 3.9 Four new SPDs are proposed within the LDS, for imminent production. These are 'Development of Affordable Housing', 'Colour in the Historic Environment' and VDSs for Compton & Shawford and Otterbourne. Document Profiles have been added for these SPD.
- 3.10 There are considerable changes in the area of design guidance SPDs. The LDS no longer contains any Local Area Design Statements (LADS), because these will all have been adopted by the time the 2007 LDS commences in March. Denmead and Kings Worthy Village Design Statements (VDS) have also been removed for the

same reason. It is intended to continue to proceed with the Olivers Battery and New Alresford VDSs, although the timetable for their production has altered. New Village Design Statements are in preparation for Compton and Shawford, and Otterbourne. Other villages are in the process of updating existing Village Design Statements and it is proposed to include a general timeline for VDS updates. In relation to Neighbourhood Design Statements (NDS) the profile for St Barnabas West (formerly referred to as Teg Down NDS) has been removed as it will be adopted before the 2007 LDS comes into effect. The West Fulflood/Orams Arbour NDS remains in the LDS, although the timetable for its production has been altered.

- 3.11 **Changes to Supporting Statement and other parts of the Scheme.** MORE? The text has been updated with several changes to reflect the changes that have occurred since 2006. Table 1 has been updated to reflect the adoption of the Winchester District Local Plan Review. The diagram that shows the relationships between documents in the LDF has been updated to include the additional SPDs planned and the removal of the references to the 1998 Local Plan.
- 3.12 The text in the Supporting Statement has been updated to reflect the changes to the Scheme and also changes to the Evidence Base available, the Resources and Risk Assessment sections.

#### 4 CONCLUSION

- 4.1 It is proposed that the 2006 (revised) LDS be superseded by a new revised 2007 LDS. The new LDS has been considerably updated to reflect changes that have occurred during the past year and also to provide a robust timetable for the production of the LDF over the next three years.

#### OTHER CONSIDERATIONS:

##### 5 CORPORATE STRATEGY (RELEVANCE TO):

- 5.1 As part of ensuring effective spatial planning of the District, the LDS will have relevance to many of the stated aims of the Council's Corporate Strategy.

##### 6 RESOURCE IMPLICATIONS:

- 6.1 The enlarged role of land use planning into spatial terms, the increased use of Sustainability Appraisal and Strategic Environmental Assessment, and the greater integration with corporate strategies, will require more resources than current budgets provide. A Priority Growth Bid has been submitted to be considered in the current budget setting process as the LDF develops, to account for this.

#### BACKGROUND DOCUMENTS:

None

#### APPENDICES:

Winchester City Council Local Development Scheme (Revised) 2007

**Winchester District  
Local Development Scheme**

**Winchester City Council  
March 2007**

## **Preface to 2007 Local Development Scheme**

This document represents an updated version of the Winchester District Local Development Scheme, which was originally adopted in March 2005, and previously revised in March 2006.

Monitoring of progress on the Scheme and the changing policy circumstances arising from the progression of Core Strategies elsewhere in the Country has led to the need to revise the 2006 LDS. A need for several additional Supplementary Planning Documents has also arisen since March 2006. The opportunity has also been taken to update the text and the LDF timetable, indicated in the chart at Appendix 1, so that the Scheme now shows the period from 2007-2010 in detail.

Briefly the changes to the Scheme from the 2006 version are:

- New SPD 'Development of Affordable Housing'
- New SPD 'Colour in Historic Buildings'
- New Village design Statement SPDs for Compton and Shawford, and Otterbourne
- Revised timetable for production of certain Design Statement SPDs as described.

This document comprises the LDS as revised and agreed by the Winchester City Council Cabinet meeting of 17<sup>th</sup> January 2007 and submitted to the Secretary of State via his representatives at the Government Offices of the South East on (insert date). This Scheme became effective as of (4 weeks after date of submission).

This is the third Winchester District Local Development Scheme. Recent government advice states that further revisions will only be allowed in special circumstances which will need to be agreed with GOSE. This LDS is therefore likely to remain largely in place until its expiration in 2010. Notwithstanding this, there may be situations which occur in the intervening period that require amendments to the 2007 LDS. Should such need arise, the Council will approach GOSE for further advice.



# Contents

<b>1</b>	<b>Introduction</b>	
	The new planning policy system	3
	The Local Development Scheme	3
	Purpose of the Winchester District Local Development Scheme	3
<b>2</b>	<b>Proposed Local Development Documents and Programme</b>	
	Relationship with existing planning policy documents	5
	Local Development Documents	5
	Table 1: Schedule of proposed Development Plan Documents and (Saved) Local Plans	6
	Diagram showing Relationships between documents in the LDF	7
	Programme of Document Production and Local Development Document Profiles	8
	• Winchester District Local Plan Review	9
	• Statement of Community Involvement LDD	10
	• Core Strategy DPD	11
	• Development Control Policies	12
	• Development Provision and Allocations DPD	13
	• Implementation of Local (Housing) Reserve Sites Policy SPD	14
	• Implementation of Infilling Policy SPD	15
	• Local Area Design Statements SPD	16
	• Village Design Statements SPD	17
	• Neighbourhood Design Statements SPD	18
<b>3</b>	<b>Supporting statement</b>	
	Rationale of overall approach	19
	Strategic planning context	19
	The Statement of Community Involvement	19
	Development Plan Documents	19
	Supplementary Planning Documents	20
	Annual Monitoring Report	20
	The community strategy and other relevant strategies	21
	Evidence base	21
	Strategic Environmental Assessment and Sustainability Appraisal	22
	Resources, Programme Management and Responsibilities	22
	Risk Assessment	23
	The proposed South Downs National Park	24
	<b>Appendix 1: Winchester City Council Local Development Framework: Programme</b>	<b>25</b>
	<b>Appendix 2: Supplementary Planning Documents and other non-Development Plan Documents</b>	<b>26</b>
	<b>Appendix 3: Glossary of Terms Used</b>	<b>28</b>

## **Introduction**

### **The New Planning Policy System**

- 1.1 The 2004 Planning and Compulsory Purchase Act made major changes to the operation of the planning policy system. The former combination of Structure Plans, Local Plans and Supplementary Planning Guidance has now been replaced by a new system. Planning policy is now produced, at the national level, in the form of Planning Policy Statements, at regional level in the form of Regional Spatial Strategy (RSS) and, at the local level, in the form of Local Development Frameworks (LDF).
- 1.2 Hampshire County Council has ceased to produce a Structure Plan. This means that Winchester City Council is responsible for much of the new planning policy system at the local level, although the County Council still has responsibility for preparing a minerals and waste development plan and advising on the Regional Spatial Strategy.
- 1.3 Each District is required to produce a Local Development Framework. The Framework is guided and managed by a Local Development Scheme (LDS). This document is the Local Development Scheme for Winchester District. It also gives details of the transitional arrangements which have been made for 'saving' certain planning documents in current use.
- 1.4 Local Development Frameworks consist of a variety of documents, in contrast to the previous system where a single Local Plan was produced. These documents are to be called Local Development Documents (LDDs) and their production and adoption is a continuous process, with new Local Development Documents adopted and included within the Local Development Framework at different stages.
- 1.5 There are two kinds of Local Development Documents: statutory and non-statutory. The statutory documents are Development Plan Documents (DPDs). These will be subject to examination and may themselves take a number of different forms. Other Local Development Documents are non-statutory, such as Supplementary Planning Documents (SPDs), although they will be subject to public consultation.

### **The Local Development Scheme**

- 1.6 This Local Development Scheme shows a three-year rolling programme of Local Development Document production. All the Development Plan Documents that the Council intends to produce in the next three years are listed. Details are included about the intended content of these documents and also the timescales for production. The local community and other stakeholders are thus able to view the intended processes and timetables for development of the Local Development Framework and the likely dates for consultation and involvement in the plan-making process.
- 1.7 Under the new system there is a greater emphasis on achieving sustainable development. This will involve strengthening community involvement and more regularly assessing the effects of development policies against specified objectives. Two features of the new system are designed to ensure this. One is the Statement of Community Involvement LDD. The other is the continuing monitoring that will be undertaken in the form of an Annual Monitoring Report (AMR). A major function of the AMR is to assess progress of the LDF, by comparing actual progress against the milestones identified in the LDS. The AMR monitoring may suggest that changes need to be made to the Local Development Scheme. The first AMR was completed in December 2005 and the second in December 2006, assessing the period from April 2005 to March 2006.
- 1.8 The Local Development Scheme is available from the Council and also on the Council's website at [www.winchester.gov.uk](http://www.winchester.gov.uk).

### **Purpose of the Winchester District Local Development Scheme**

- 1.9 This Local Development Scheme has 3 main purposes:

- To inform the public of the Local Development Documents that the Council intends to produce, as part of the Local Development Framework, including details of the subject matter and geographical area for each of the documents and a timetable for publication;
- To set a work programme for the preparation of these Local Development Documents;
- To set a timetable for the review of the documents once they have been prepared.

1.10 The LDS also enables the Government Office for the South East to see the documents to be produced, their intended status and the time-scales for production. The Government Office has assessed whether the proposed time-scales are reasonable and realistic, in deciding whether to accept the LDS. The timescales given for the public examination process have been the subject of consultation with the Planning Inspectorate, to ensure that these are achievable. Overall, a clear and robust Local Development Scheme will give a good basis for the production of documents and help to ensure their soundness.

## **2 Proposed Local Development Documents and Programme**

### **Relationship with existing planning policy documents**

- 2.1 Once adopted, the Local Development Documents will provide the new planning policy framework for the District. However, during the period when these new documents are being put in place, the Council has the option of 'saving' existing adopted documents, which means that they can still be used to determine planning applications. The Local Development Scheme sets out which documents will be saved and when they will be replaced. The "saved" period would normally be for three years, although, where the Authority can demonstrate to the Secretary of State that the saved policies reflect the principles of local development frameworks, this period may be extended.
- 2.2 Until the new Regional Spatial Strategy is adopted, the statutory strategic planning framework will continue to be provided by RPG 9, published in March 2001, and the Hampshire County Structure Plan Review (1996-2011), which was adopted in March 2000 and is a 'saved plan' under the terms of the new Planning Act.
- 2.3 At the local level, Winchester City Council initially saved the 1998 Winchester District Local Plan. However in July 2006, the Winchester District Local Plan Review (WDLPR) was adopted and became the statutory plan for the District. From that date therefore, the 1998 Plan was superseded and the policies within the WDLPR became the 'saved' policies for a period of three years from their adoption.
- 2.4 Thus, it is expected that the adopted WDLPR will form a significant part of the Local Development Framework for some time to come.
- 2.5 The existing statutory development plans which are saved and remain in force are as follows:
- The Hampshire County Structure Plan, covering the period 1996-2011 (to be replaced by the Regional Spatial Strategy);
  - The Adopted Winchester District Local Plan Review 2006.
  - The Hampshire Minerals and Waste Plan, adopted 1998 and covering the period to 2001 (to be replaced by Hampshire Minerals and Waste Development Framework);
- 2.6 The purpose of saving documents is to bridge the gap between finalising production of the now – superseded style of documents and the adoption of new Local Development Documents. It is not necessarily the case that the whole of a saved document will be replaced by a single new Local Development Document. Therefore, with each new Local Development Document, a schedule will be produced outlining which of the saved documents will be replaced and, if so, to what extent. New Proposals Maps will be produced to show which policies apply and the areas covered by them.

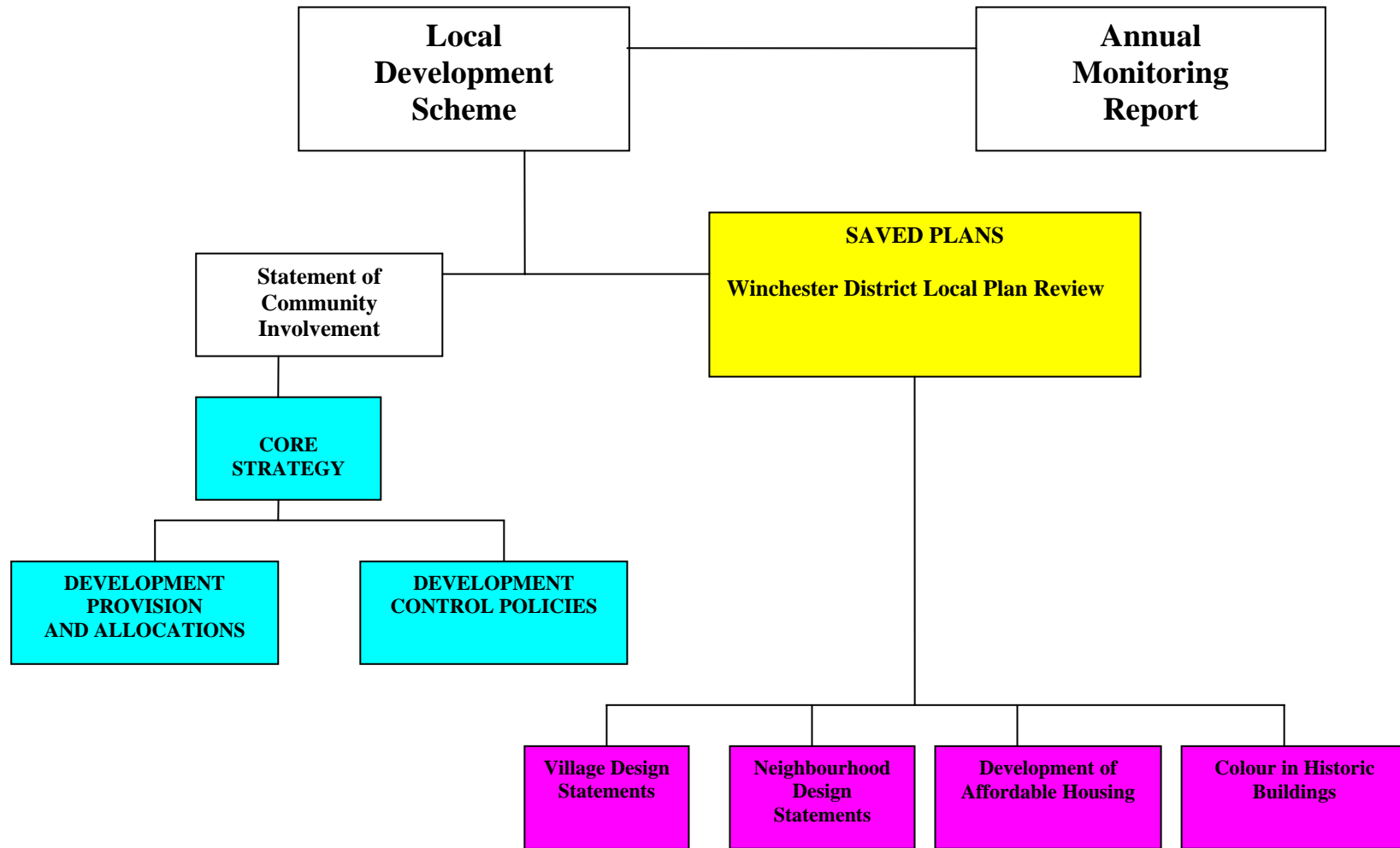
### **Local Development Documents**

- 2.7 The new Development Plan Documents that the City Council intends to produce are shown in Table 1 below, as well as any documents that will be saved to become part of Winchester District's Local Development Framework. A description is given which briefly outlines the intended content of these documents and the geographic area to which they will relate. It also shows the Statement of Community Involvement, a Special Local Development Document. Initially, the Local Development Framework is expected to consist mainly of saved documents. It should also be noted that, as each DPD is adopted, corresponding revisions to the Proposals Map will be made.
- 2.8 The Core Strategy will set out the key elements of the District's Local Development Framework and, once adopted, all other Development Plan Documents must be in conformity with it.

**Table 1: Schedule of proposed Development Plan Documents and (Saved) Local Plans**

<b>Document title</b>	<b>Status</b>	<b>Brief description</b>	<b>Chain of Conformity</b>
Winchester District Local Plan Review (2001 - 2011)	Saved Local Plan	Old style Local Plan to be saved until replaced by emerging DPDs	Hampshire County Structure Plan Review
Statement of Community Involvement	Special Local Development Document	Sets standards for community engagement on LDDs and major planning applications	Planning Regulations
Core Strategy	Development Plan Document	To provide the vision and key policies for the planning and development of the District for about 15 years ahead.	Consistent with national policy and general conformity with Regional Spatial Strategy
Development Provision and Allocations	Development Plan Document	To reflect development requirement of South East Plan (RSS) and meet other development requirements.	Regional Spatial Strategy/Core Strategy
Development Control Policies	Development Plan Document	To provide specific policies for assessing planning applications.	Core Strategy

**Relationships between documents in the LDF**



**Key**



## **Programme of Document Production and Local Development Document Profiles**

- 2.9 A chart showing the Council's programme for document production over the next three years is attached at Appendix 1. The schedules on the following pages set out the Council's work programme for Local Development Documents for the next 3 years, but where the production of a document is likely to extend beyond this three-year time-scale, an indication is given of the likely programme up to the expected date of adoption.

## Local development document profiles

<b>Core Strategy</b>	
<b>Document Details</b>	
Role and content	The Core Strategy will provide the vision and key policies for the planning and development of the District and the framework for the preparation of other Development Plan Documents. It will also set out how development requirements are to be met.
Geographical coverage	Winchester District
Status	Development Plan Document (DPD)
Chain of Conformity	Consistent with national planning policy and in general conformity with the Regional Spatial Strategy (South East Plan).
<b>Timetable of Key Stages (Key Milestones shown in Italics)</b>	
<b>Pre-production:</b> <i>Including commencement of document preparation.</i>	September 2006 – June 2007
<b>Production:</b> Early Community and Stakeholder involvement on issues and alternative options, and preparation of initial sustainability appraisal report.	July - December 2007
<i>Consultation on preferred options and consideration of responses. Preparation of formal sustainability report.</i>	January – August 2008
<i>Submission of Development Plan Document and sustainability appraisal report to the Secretary of State</i>	September 2008
Public consultation period on the submitted Core Strategy and sustainability appraisal report	September – October 2008
<b>Examination:</b> Pre-examination consideration of representations.	November 2008 – January 2009
<i>Pre examination meeting.</i>	February 2009
<i>Commencement of the examination followed by the examination period</i>	April – May 2009
Receipt of the Inspector's binding report	October 2009
<b>Adoption:</b> <i>Adoption and publication of document and revised proposals map</i>	December 2009
<b>Arrangements for Production</b>	
Process management (Departmental Responsibility)	Strategic Planning Team with input from other Council services
Management arrangements	Overall project management by Cabinet (LDF) Committee. Day to day management by the Head of Strategic Planning working in conjunction with other Council officers through a Steering Group
Internal resources	Strategic Planning Team working in conjunction with other Council officers. Progress subject to adequate budget provision.
External resources	Use of County Council officers and specialist consultants as required.
Community and stakeholder involvement	As set out in the Statement of Community Involvement, including key links with the Local Strategic Partnership.



<b>Development Provision and Allocations</b>	
<b>Document Details</b>	
Role and content	This Development Plan Document will allocate sites required to meet development requirements.
Geographical coverage	Winchester District
Status	Development Plan Document (DPD)
Chain of Conformity	With the Regional Spatial Strategy (South East Plan) and the Local Development Framework's Core Strategy.
<b>Timetable of Key Stages (Key Milestones shown in Italics)</b>	
<b>Pre-production:</b> <i>Including commencement of document preparation.</i>	July 2007 - October 2008
<b>Production:</b> Preparation of issues and alternative options, and initial sustainability appraisal report.	October 2008 - May 2009
<i>Consultation on preferred options and consideration of responses. Preparation of formal sustainability report.</i>	June 2009 – Jan 2010
<i>Submission of Development Plan Document and sustainability appraisal report to the Secretary of State</i>	Feb 2010
Public consultation period on the submitted document and sustainability appraisal report	March – Oct 2010
<b>Examination:</b> Pre-examination consideration of representations	Nov 2010 - April 2011
<i>Pre examination meeting</i>	May 2011
<i>Commencement of the examination followed by the examination period</i>	July - November 2011
Receipt of the Inspector's binding report	February 2012
<b>Adoption:</b> <i>Adoption and publication of document and revised proposals map</i>	May 2012
<b>Arrangements for Production</b>	
Process management (Departmental Responsibility)	Strategic Planning Team with input from other Council services.
Management arrangements	Overall project management by Cabinet (LDF) Committee. Day to day management by the Head of Strategic Planning working in conjunction with other Council officers through a Steering Group.
Internal resources	Strategic Planning Team working in conjunction with other Council officers. Progress subject to adequate budget provision.
External resources	Use of County Council officers and specialist consultants as required.
Community and stakeholder involvement	As set out in the Statement of Community Involvement, including key links with the Local Strategic Partnership.

## Development Control Policies

### Document Details

Role and content	This Development Plan Document will provide specific policies for assessing planning applications.
Geographical coverage	Winchester District
Status	Development Plan Document (DPD)
Chain of Conformity	Core Strategy.

### Timetable of Key Stages (Key Milestones shown in Italics)

<b>Pre-production:</b> <i>Including commencement of document preparation.</i>	Nov 2008 – Mar 2009
<b>Production:</b> Preparation of issues and alternative options, and initial sustainability appraisal report.	April 2009 – Dec 2009
<i>Consultation on preferred options and consideration of responses. Preparation of formal sustainability report.</i>	Jan – Aug 2010
<i>Submission of Development Plan Document and sustainability appraisal report to the Secretary of State</i>	Sept 2010
Public consultation period on the submitted document and sustainability appraisal report	Sept – Oct 2010
<b>Examination:</b> Pre-examination consideration of representations	Nov 2010 - April 2011
<i>Pre examination meeting</i>	May 2011
<i>Commencement of the examination followed by the examination period</i>	July - Nov 2011
Receipt of the Inspector's binding report	Feb 2012
<b>Adoption:</b> <i>Adoption and publication of document and revised proposals map</i>	May 2012

### Arrangements for Production

Process management (Departmental Responsibility)	Strategic Planning Team with input from other Council services.
Management arrangements	Overall project management by Cabinet (LDF) Committee. Day to day management by the Head of Strategic Planning working in conjunction with other Council officers through a Steering Group.
Internal resources	Strategic Planning Team working in conjunction with other Council officers. Progress subject to adequate budget provision.
External resources	Use of County Council officers and specialist consultants as required.
Community and stakeholder involvement	As set out in the Statement of Community Involvement

## Development of Affordable Housing

### Document Details

Role and content	Provide guidance on implementation of the Affordable Housing Policy H5 of the Winchester District Local Plan Review 2006
Geographical coverage	District Wide
Status	SPD
Chain of Conformity	With the Affordable Housing Policy H5 of the Winchester District Local Plan Review

### Timetable of Key Stages (Key Milestones shown in Italics)

<b>Pre-production period:</b> <i>Including commencement of document preparation.</i>	January – February 2007
<b>Production:</b> Preparation of draft Supplementary Planning Document and sustainability appraisal report.	March – April 2007
<i>Draft Supplementary Planning Document and sustainability appraisal report issued for public consultation.</i>	May - June 2007
Consideration of representations and amendment of document if required.	July – September 2007
<b>Adoption:</b> <i>Adoption and publication of document</i>	November 2007

### Arrangements for Production

Process management (Departmental Responsibility)	Strategic Planning Team with input from Strategic Housing
Internal resources	Head of Strategic Planning and Housing Strategy & Development Manager working in conjunction with other Council officers. Facilitator resources for pre-production stage required.
External resources	Use of external facilitators as required.
Community and stakeholder involvement	As set out in the Statement of Community Involvement

## Colour in the Historic Environment

### Document Details

Role and content	Provide detailed guidance on the use of colour in historic buildings across the District
Geographical coverage	Winchester District
Status	SPD
Chain of Conformity	With policy HE 4, 5, 6, 8, 9, 10, 12, 13, 14, 16 of the Winchester District Local Plan Review and PPG15

### Timetable of Key Stages (Key Milestones shown in *Italics*)

<b>Pre-production period:</b> <i>Including commencement of document preparation.</i>	January – March 2007
<b>Production:</b> Preparation of draft Supplementary Planning Document and sustainability appraisal report.	April – June 2007
<i>Draft Supplementary Planning Document and sustainability appraisal report issued for public consultation.</i>	June – July 2007
Consideration of representations and amendment of document if required.	August – November 2007
<b>Adoption:</b> <i>Adoption and publication of document</i>	December 2007

### Arrangements for Production

Process management (Departmental Responsibility)	Conservation and Design (Cultural Services) with input from Strategic Planning and Development Control Teams
Internal resources	Principal Conservation Officer working in conjunction with other Council officers. Budget for appointment of consultants.
External resources	Primarily use of specialist consultant, with input from Council officers as required.
Community and stakeholder involvement	Consultation with statutory consultees, parish councils, relevant amenity groups, residents, conservation professionals and agents.

## Village Design Statements

### Document Details

Role and content	Provide guidance on the character and design of new development to be accommodated within villages.
Geographical coverage	Villages of: <ul style="list-style-type: none"> <li>• Compton &amp; Shawford</li> <li>• Otterbourne</li> <li>• New Alresford</li> <li>• Olivers Battery</li> </ul>
Status	SPD
Chain of Conformity	With policies DP.1, DP.3, DP.5, H.2, H.5 and H.7 of the Winchester District Local Plan Review.

### Timetable of Key Stages (Key Milestones shown in Italics)

<b>Pre-production period:</b> <i>Including commencement of document preparation.</i>	<ul style="list-style-type: none"> <li>• Compton &amp; Shawford: Sept 2006 – March 2007</li> <li>• Otterbourne: May - November 2006</li> <li>• New Alresford: August 2004 - February 2005</li> <li>• Olivers Battery: April 2005 - April 2006</li> </ul>
<b>Production:</b> Preparation of draft Supplementary Planning Document and sustainability appraisal report.	<ul style="list-style-type: none"> <li>• Compton &amp; Shawford: April – December 2007</li> <li>• Otterbourne: December 2006 – May 2007 -</li> <li>• New Alresford: March 2005 – December 2006</li> <li>• Olivers Battery: May 2006 - April 2007</li> </ul>
<i>Draft Supplementary Planning Document and sustainability appraisal report issued for public consultation.</i>	<ul style="list-style-type: none"> <li>• Compton &amp; Shawford: January – February 2008</li> <li>• Otterbourne: June – July 2007</li> <li>• New Alresford: January – March 2007</li> <li>• Olivers Battery: May – June 2007</li> </ul>
Consideration of representations and amendment of document if required.	<ul style="list-style-type: none"> <li>• Compton &amp; Shawford: March – June 2008</li> <li>• Otterbourne: August – November 2007</li> <li>• New Alresford: April – July 2006</li> <li>• Olivers Battery: July - October 2007</li> </ul>
<b>Adoption:</b> <i>Adoption and publication of document</i>	<ul style="list-style-type: none"> <li>• Compton &amp; Shawford: July 2008</li> <li>• Otterbourne: December 2007</li> <li>• New Alresford: September 2007</li> <li>• Oliver's Battery: November 2007</li> </ul>

### Arrangements for Production

Process management (Departmental Responsibility)	Strategic Planning Team (but day to day production / management by VDS Groups).
Internal resources	Head of Strategic Planning working in conjunction with other Council officers.
External resources	Primarily voluntary VDS Groups or Parish Councils with some use of specialist consultants, with input from other Council officers as required.
Community and stakeholder involvement	As set out in the Statement of Community Involvement The documents are prepared by the community, with input by the Council's officers and design consultants.

## West Fulflood & Oram's Arbour Neighbourhood Design Statement

### Document Details

Role and content	Provide guidance on the character and design of new development to be accommodated within neighbourhoods.
Geographical coverage	West Fulflood & Orams Arbour area of Winchester
Status	SPD
Chain of Conformity	With policies DP.1, DP.3, DP.5, H.2, H.5 and H.7 of the Winchester District Local Plan Review.

### Timetable of Key Stages (Key Milestones shown in Italics)

<b>Pre-production period:</b> <i>Including commencement of document preparation.</i>	May 2004 - February 2005
<b>Production:</b> Preparation of draft Supplementary Planning Document and sustainability appraisal report.	March 2005 - February 2007
<i>Draft Supplementary Planning Document and sustainability appraisal report issued for public consultation.</i>	March 2007
Consideration of representations and amendment of document if required.	April – July 2007
<b>Adoption:</b> <i>Adoption and publication of document</i>	September 2007

### Arrangements for Production

Process management (Departmental Responsibility)	Strategic Planning Team (but day to day production / management by NDS Group)
Internal resources	Head of Strategic Planning working in conjunction with other Council officers.
External resources	Primarily voluntary NDS Group with some use of specialist consultants, with input from other Council officers as required.
Community and stakeholder involvement	As set out in the Statement of Community Involvement The documents are prepared by the community, with input by the Council's officers and design consultants

### **3 Supporting statement**

#### **Rationale of overall approach**

- 3.1 This Local Development Scheme shows the programme for production of the Local Development Framework for the next three years. Until July 2006, work was still taking place on the procedures leading to the adoption of the Winchester District Local Plan Review. Therefore only pre-production work had commenced on much of the LDF prior to 2007. The policies contained within the WDLPR will be gradually replaced by new planning statutory policies as the LDF progresses. It is not possible to say what those replacement policies will be or indeed when this will occur, as the production of DPDs is currently at a very early stage. The replacement of the WDLPR policies will be considered as part of the production of the relevant DPD(s).

#### **Strategic planning context**

- 3.2 Currently, planning policies in Winchester District must be in conformity with the Hampshire County Structure Plan Review, and this is particularly significant for the District in terms of housing provision. As part of the new planning policy system, Structure Plans are to be phased out so that regional policy will no longer be filtered down through them. Regional Planning Guidance will be replaced by a statutory Regional Spatial Strategy (RSS). The Regional Spatial Strategy will be part of the Development Plan, which means that planning decisions must be made in accordance with this, as well as the Development Plan Documents and other material considerations. The Regional Spatial Strategy (to be known as the South East Plan in this area) will have particular significance for District Councils, in terms of allocating housing numbers. In future, it will be the Regional Spatial Strategy that identifies the scale and distribution of new housing provision. The Regional Spatial Strategy will also develop locational criteria for housing allocations of regional significance.
- 3.3 The timing of the preparation and adoption of this document has a significant influence on the programming of the first Development Plan Documents in this Local Development Scheme, as the housing and other development to be accommodated in the District cannot be confirmed until the South East Plan has reached an advanced stage. Its adoption is anticipated in 2008.
- 3.4 The 2007 LDS anticipates that the Council will need to carry out some work in relation to the identification and implementation of the Strategic Development Areas that the South East Plan is likely to specify in southern Hampshire. This is likely to take the form of Area Action Plans. However, the scope and timing of these Plans is not known at the current time. The LDS therefore refers to such work, without specifying a detailed programme. When the exact nature of the work required becomes clear, the Council will discuss with GOSE how this can be incorporated within the LDS.

#### **The Statement of Community Involvement (SCI)**

- 3.5 The SCI was adopted in January 2007 and it will be used to inform the production of all other Local Development Documents.

#### **Development Plan Documents**

- 3.6 Work is programmed to start first on the Core Strategy, and pre-production work commenced in mid 2006. This revised 2007 version of the LDS allows more time for the evidence gathering in order to ensure a 'sound' Core Strategy. As the Core Strategy progresses through its consultation stages, the requirements of the Regional Spatial Strategy should be clarified, and provide a basis for the development of options for the LDF's Core Strategy. The proposed timing of the Core Strategy avoids it being submitted to the Secretary of State for examination before the Regional Spatial Strategy, with which it must conform, is adopted. It is now programmed that the Core Strategy will be adopted in December 2009 and relevant policies of the WDLPR must therefore be saved until this time to provide a statutory basis for planning decisions. This will be subject to agreement by GOSE.

- 3.7 Work on the production element of the Development Provision and Allocations DPD is programmed to commence in October 2008, when the Core Strategy will have been submitted to the Secretary of State and the RSS has been adopted. This version of the LDS allows more time for the evolution of development options and for consultation on options. . The programme will therefore extend beyond the period programmed in this Local Development Scheme, with adoption anticipated in May 2012, and may need to be adjusted to synchronise with the South East Plan.
- 3.8 One further Development Plan Document has been programmed to commence within the next three years. The Development Control Policies DPD will provide guidance to applicants, replacing many of the 'saved' policies from the Winchester District Local Plan Review.. In addition, new Local Development Documents may be needed for other reasons, such as monitoring or the publication of new Government advice. Should this occur, advice will need to be taken from GOSE as to how to change this LDS if required

### **Supplementary Planning Documents**

Two additional Supplementary Planning Documents have been included in the 2007 revised Local Development Scheme: 'Development of Affordable Housing' and 'Colour in Historic Buildings'. .

- 3.9 The Supplementary Planning Documents programmed into this Local Development Scheme also include a number of Village Design Statements and a Neighbourhood Design Statement which are expected to be adopted during the 3 - year period of this LDS.
- 3.10 Village and Neighbourhood Design Statements are community driven documents, and a best estimate of the programme for production has been agreed with the document co-ordinators. Only those where the Parish or Neighbourhood are known to be actively working on a Design Statement have been included. Some other Parishes and Neighbourhoods are also considering the preparation of Design Statements, or the revision of existing ones, but these are not sufficiently advanced to include a detailed programme. A general 'timeline' for these is included in the chart at Appendix 1 .
- 3.11 A list of current Supplementary Planning Guidance is attached at Appendix 2. This includes details of guidance that is not carried forward into the Local Development Framework, guidance to be retained to support saved Local Plan policies, and guidance to be revised as Supplementary Planning Documents in future revisions of the Local Development Scheme.

### **Annual Monitoring Report.**

- 3.12 Under the new planning system there is a much greater emphasis on monitoring the effectiveness of planning policies and the Council is required to publish an Annual Monitoring Report (AMR), in December each year. Attention will be given to ensuring that the new policies incorporated in the Local Development Documents can be monitored effectively. Each Local Development Document produced will have targets, so that progress against these can be measured and assessed, and trajectories will be used to demonstrate past and likely future performance. Once a Core Strategy document is developed that contains the vision for the District, particular attention will be given to whether policies are being effective in meeting this vision. The purposes of the Annual Monitoring Report are to assess:

- whether the programme set by the Local Development Scheme is being adhered to;
- the extent to which policies in Local Development Documents are being achieved;
- what impact the policies within the Local Development Documents are having on relevant national, regional or local targets;
- whether the targets contained in the Local Development Documents are being met;
- the reasons why any particular targets are not being met;
- whether it is necessary to replace any policies, so as to meet targets or sustainable development objectives, and what action needs to be taken if this is the case;
- whether it has become necessary to review any documents earlier than the initially scheduled date, for example, because their effectiveness has been limited or they have become out of date sooner than expected.



- 3.13 It is likely that the review of success in both meeting policy objectives and following the scheduled timescales for producing documents will show that some changes are needed. Therefore, each Annual Monitoring Report will identify any updating of the Local Development Scheme which may be needed.
- 3.14 The Council's second Annual Monitoring Report was produced in December 2006. That report noted that the timetables for some of the SPDs would need to be adjusted. The AMR also highlighted the need for the two new SPDs on affordable housing and colour in historic buildings..

### **The Community Strategy and other relevant strategies**

- 3.15 The Local Development Framework should reflect the aims and objectives of the Community Strategy, other corporate strategies and strategies from other local bodies. The Winchester Community Strategy is kept under review each year and a full review is planned for 2007, to run alongside the preparation of the LDF Core Strategy. Where issues that arise from this have planning or land-use implications they will be addressed in the Local Development Documents. Other relevant corporate strategies are the Housing and Cultural Strategies and relevant strategies external to the Council include Health, Education and those of bodies such as the Hampshire Economic Partnership.

### **Evidence base**

- 3.16 All new documents that are produced should be based on sound evidence. However, any documents that are produced as part of the evidence base do not have statutory status. Instead, they are used to inform the development of documents that will have statutory status and which will be subject to public consultation and examination. Background evidence for the production of Local Development Documents will rely on various sources. For example, Hampshire County Council will provide much baseline data. Existing Winchester City Council statistics and studies that have already been produced by the Council or by consultants will still be used where relevant. It is also expected that some new consultants' studies will be required. Existing Documents that will be part of the evidence base include:
- Annual Monitoring Report 2006 (updated annually)
  - Housing Monitoring Reports 2003 – 2005 (Winchester City Council) Now contained within AMR
  - Winchester District Urban Capacity Study (Winchester City Council, 2001)
  - Winchester District Housing Needs Survey (David Couttie Associates, 2002). Reviewed every 3 years
  - Winchester City and its Setting (Landscape Design Associates, 1998)
  - Future of Winchester Study (Winchester City Council, 1999)
  - Vision for Winchester (Winchester Town Forum, 2006)
  - Winchester District Landscape Character Assessment (Winchester City Council, 2004);
  - Hampshire Local Transport Plan (Hampshire County Council, 2006)
  - Winchester District Open Space Strategy (Winchester City Council, 2006. Re-published annually)
  - Winchester District Local Biodiversity Action Plan (Hampshire & Isle of Wight Wildlife Trust, Draft 2005)
  - Assessment of Retail Floorspace in Winchester (Nathaniel Lichfield, 2003, and update November 2006)
  - Tourism Strategy (Winchester City Council, 2005)
  - Contaminated Land Strategy (Winchester City Council 2004)
  - Tree Strategy (Winchester City Council 2006)
  - Sutton Scotney Design and Development Brief (June 2005)
  - Air Quality Action Plan (April 2006)
- 3.17 Some of these studies will require updating to provide the background to new Development Plan Documents and additional documents or studies will be required. Known documents/studies that have been programmed so far comprise the following:

- Strategic Housing Market Assessments – mid 2007
- Urban Potential Study – mid-2007
- Needs assessment for employment sites and office floorspace – end-2007
- Strategic Flood Risk Assessment – end 2007
- PPG17 Assessment of recreational needs – mid-2007
- Green Infrastructure Audit – mid-2007
- Social Issues and Community Aspirations – early-2007
- Winnall Industrial Estate Study – early-2007

These studies are all programmed to be completed by the end of 2007, to inform the development of the Core Strategy. This work may in itself led to a need for further studies to be carried out, however the extent of these cannot be determined at this stage. Additional studies, or updates of existing studies, forming part of the evidence base, will be programmed to be prepared at the earliest stage in the development plan document they are required to support.

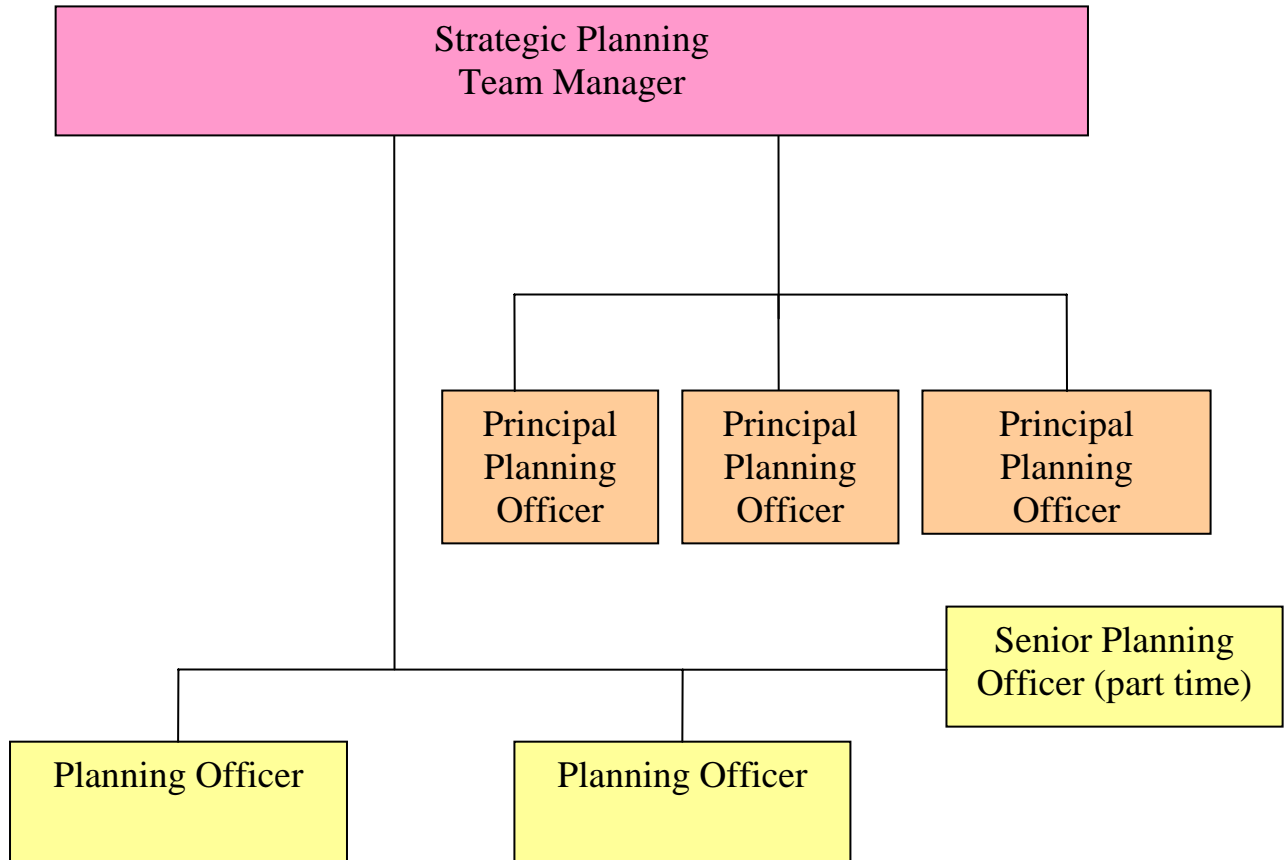
### **Strategic Environmental Assessment and Sustainability Appraisal**

- 3.18 Achieving sustainable development is at the heart of the new system. In preparing Local Development Documents, attention will be given to the expected environmental outcome of proposed plans. All Local Development Documents will contain a Sustainability Appraisal (SA). A new European Union Directive came into force in July 2006 which requires that all plans, likely to have significant effects on the environment, must incorporate a formal Strategic Environmental Assessment (SEA). This applies to all Development Plan Documents and, in certain circumstances, may also apply to Supplementary Planning Documents, depending on the likely significance of their environmental impact.
- 3.19 During the preparation of a Document, the authority is expected to: identify strategic alternatives; consider any likely significant effects of the options and; take these into account in drafting the Plan. Consultants were appointed in January 2007 to undertake sustainability appraisal to assess the environmental and sustainability impacts of the proposed Development Plan Documents and to advise on SA for other Council plans and strategies. The consultants will be undertaking a SA/SEA of the Core Strategy as it develops. Greater consultation with public and environmental authorities is also expected to help achieve wider sustainability objectives. Environmental effects will then be monitored through the Annual Monitoring Report.

### **Resources, Programme Management and Responsibilities**

- 3.20 The programme will require inputs from many parts of the Council, although this will be co-ordinated at officer-level by the Strategic Planning Division. The Strategic Planning Division currently consists of 6.6 full-time equivalent professional posts, although its responsibilities extend to cover areas additional to the Local Development Framework and, in particular, involvement in regional planning, supplementary planning documents and the planning and the implementation of major development. This LDS is based on the existing establishment of the Strategic Planning Division, with the proposed addition of some technical/administrative support. The current structure of the Division is shown in the table on page 19.
- 3.22 There will continue to be a need to draw on specialist skills within the Development directorate (e.g. landscape, transportation), as well as from the Council as a whole (such as housing and conservation for example). Staff recruitment and retention is a particular problem within the planning profession, but provided that a full establishment can be maintained, the programme set out in this Local Development Scheme is achievable. Hampshire County Council will assist where appropriate and, especially, in producing the evidence base and in information gathering. The County Council will also help in the monitoring process, for example in providing information on housing completions. The City Council will liaise with other groups, as necessary, and will seek inputs from the local Health and Education authorities.
- 3.23 The City Council has a 'Local Development Framework Reserve', to which it contributes £40,000 annually, to spread the cost of major development plan expenditure, i.e. the publication of documents and public inquiry. This level of funding will be maintained and a bid has been made for additional funding so as to fund the various studies and other requirements of the LDF.

Additional funding was allocated in 2005/06 and 2006/07 to cover the costs of the Local Plan Review Inquiry.



## Risk Assessment

3.24 The main issues which may put the achievement of the Local Development Scheme at risk are:

- Experience of/changes to the planning system. This Local Development Scheme takes account of extensive advice and best practice guidance but it does seek to implement a major change to the planning system. Experience may show that further changes are needed or that certain aspects do not operate as currently envisaged. Indeed, this 2007 revised LDS has allowed more preparation time for the Core Strategy and Development Provisions DPDs as a result of the experiences of other Core Strategies during 2006, and of Government advice. The Annual Monitoring Report provides the opportunity to monitor progress on achieving the programme set out in this LDS and to seek approval of amendments by GOSE if necessary.
- Staff and skills availability. As mentioned elsewhere in this LDS, the programme set out assumes that the Strategic Planning Division and other key areas of the Council are staffed at the current level and with appropriately skilled personnel. Staff retention and recruitment in the planning field are particular issues, which are affecting the Strategic Planning Division as much as other planning services. If long-term vacancies do occur, or staff with adequate skills cannot be appointed, this may threaten the achievement of the LDS programme. The Council is seeking to improve recruitment and retention to address this issue and future monitoring would enable the LDS to be adjusted, if necessary, to reflect available staff resources.

- Adequacy of funding. As noted above, the Council sets aside funding for development plan production. Although the new planning system is intended to be faster and less resource-intensive than the old local plan system, there is an increased emphasis on aspects such as monitoring, sustainability and environmental assessment and public involvement. The importance of a sound evidence base, and the range of studies needed to achieve this, has become more apparent recently. These new areas in particular will require additional funding, for example for specialist consultancy and public consultation/publicity exercises, and a priority growth bid has been made to put this funding in place. The monitoring process, along with further project management work should identify the need for additional resources sufficiently well in advance for appropriate action to be taken.

### **The Proposed South Downs National Park**

- 3.25 Part of the District is within the proposed South Downs National Park, but this is unlikely to be confirmed or rejected before 2008, and therefore the arrangements for the preparation of a Local Development Framework for it cannot be established at this stage. If confirmed, a National Park Authority will be appointed, which will have responsibility for producing its own Local Development Scheme and Local Development Framework. The City Council will liaise with any future National Park Authority and other relevant bodies to establish which existing/proposed documents will be saved or continued, and the programme for their replacement.



# APPENDIX 1: WINCHESTER CITY COUNCIL LOCAL DEVELOPMENT FRAMEWORK - PROGRAMME

PROJECT	2007												2008												2009												2010												2011																				
	M	A	M	J	J	A	S	O	N	D	J	F	M	A	M	J	J	A	S	O	N	D	J	F	M	A	M	J	J	A	S	O	N	D	J	F	M	A	M	J	J	A	S	O	N	D	J	F	M	A	M	J	J	A	S	O	N	D	J	F	M	A	M	J	J	A	S	O	N
<b>Winchester District Local Plan Review</b>	Saved Plan																								Saved policies may continue until replaced by a new DPD policy →																																												
<b>DPDs</b>																																																																					
Core Strategy	Pre-prdn			Production												S			E			A																																															
Development Provision				Pre-production												Production												S			E																																						
Development Control							Pre-production			Production												S			E																																												
<b>SPDs</b>																																																																					
Affordable Housing													A																																																								
Colour in Historic Environment													A																																																								
<b>VDS's</b>																																																																					
Compton & Shawford													A																																																								
Otterbourne													A																																																								
Olivers Battery													A																																																								
New Alresford													A																																																								
<b>NDS's</b>																																																																					
Fulford													A																																																								
	Review of existing VDS's & NDS's & SPD's not yet programmed →																																																																				
<b>Other LDDs</b>	Preparation of LDDs resulting from RSS not yet programmed →																																																																				

KEY		
<b>S</b>	Submission	Winchester District Local Plan Review
<b>E</b>	Examination	Development Plan Documents
<b>A</b>	Adoption/amendment of Proposals Map for DPDs	Supplementary Planning Documents
		Pre-production
		Production
		Submission
		Examination Hearing
		Pre-production
		Production
		Review



### SUPPLEMENTARY PLANNING DOCUMENTS AND OTHER NON - DEVELOPMENT PLAN DOCUMENTS

#### 1. Supplementary Planning Documents adopted since September 2004

- Implementation of Local (Housing) Reserve Sites Policy SPD (July 2006)
- Implementation of Infilling Policy SPD (July 2006)
- Kings Worthy VDS (October 2006)
- Denmead VDS (February 2007)
- St Barnabas West (Teg Down) NDS (February 2007)
- Chilbolton Avenue LADS (January 2006)
- Springvale Road LADS (July 2007)
- Sleepers Hill LADS (January 2007)

#### 2. Existing Supplementary Planning Guidance to be retained or revised to support saved policies in the Winchester District Local Plan Review (programme to be included in future Local Development Schemes):

(Note: some of the Supplementary Planning Guidance listed below will need to be reviewed and formally adopted as Supplementary Planning Documents in order to carry weight in planning decisions)

<u>Specific issues</u>	Date adopted	WDLPR Policies
• Achieving a Better Mix in New Housing Developments	2000	H7
• Design Guidance for the control of Shopfronts and Signs	1998	HE9-HE12
• Winchester District Landscape Character Assessment	2004	CE5, DP4
• Winchester Conservation Area Project	2003	HE4 – HE8
• Equestrian Development	1999	RT11
 <u>Development Briefs and Master Plans</u>		
• Broadway / Friarsgate Planning Brief	2003	W2
• Whiteley Business Park, Phase 2, Development Brief	1991	S14
 <u>Village Design Statements</u>		
		DP1-DP5 H3/H4, H5, H7
• Boarhunt	2002	
• Bramdean	2000	
• Corhampton & Meonstoke	2002	
• Crawley	2001	
• Curdridge	2002	
• Exton	2002	
• Itchen Abbas	2001	
• Littleton	2001	
• Micheldever	2002	
• Soberton	2002	
• Sparsholt	1999	
• Swanmore	2001	
• Upham	1999	
• West Meon	2002	
• Wickham	2001	
 <u>Neighbourhood Design Statements</u>		
• St Giles Hill, Winchester	2004	
•		



**The following section is included for information only:**

**Existing Development Briefs and Master Plans not to be carried forward into the Local Development Framework:**

	Date adopted
• Abbey Mill, Bishop's Waltham, Development Brief	1989
• Bar End Study (Part 1)	1993
• Broadway / Friarsgate: Urban Design Framework and Planning Brief (Draft)	1999
• Durley Sawmill Design and Development Brief	1998
• Forest Road, Denmead, Development Brief	2001
• Knowle Village Development Brief	1994
• Knowle Village: A Master Plan for Development	1998
• Knowle Village: An Urban Design Framework	1999
• Malt Lane, Bishop's Waltham, Development Brief	1991
• Potteries Site, Denmead, Development Brief	1984
• Whiteley Business Park, Phase 1, Development Brief	1984
• Whiteley Area 2 Development Brief	1987
• Whiteley Area 13 Development Brief	1991
• Whiteley Farm (Areas 4,5,6,8a) Development Brief	1991

**Other Non- Development Plan Documents to be produced:**

The following Conservation Area appraisals will be carried out:

- Botley (in conjunction with Eastleigh Borough)
- Compton Street
- Corhampton & Meonstoke
- Crawley
- Droxford
- East Stratton
- Exton
- Hambledon
- Littleton
- Micheldever
- Soberton Pumping Station
- Southwick
- Sparsholt
- Stoke Charity
- Sutton Scotney
- Twyford
- West Meon

### GLOSSARY OF TERMS USED

**Annual Monitoring Report (AMR):** Part of the Local Development Framework, the Annual Monitoring Report assesses the implementation of the Local Development Scheme and the extent to which policies in the Local Development Documents are being successfully applied.

**Area Action Plan (AAP):** Development Plan Documents which provide a planning framework for specific areas of change or areas of conservation.

**Core Strategy:** Development Plan Document which sets out the long-term spatial vision for the local planning authority area, spatial objectives and strategic policies to deliver that vision.

**Development Plan:** As set out in Section 38(6) of the Planning and Compulsory Purchase Act, 2004 an authority's development plan is made up of the Regional Spatial Strategy and the Development Plan Documents contained within its Local Development Framework (including 'saved' documents).

**Development Plan Document (DPD):** Spatial planning document that is subject to independent examination and, together with the relevant Regional Spatial Strategy, forms the Development Plan for the local authority area.

**Development Control Policies:** A suite of criteria-based policies which are required to ensure that all development within the local authority area meets the spatial vision and spatial objectives set out in the Core Strategy.

**Local Development Document (LDD):** Collective term for Development Plan Documents, Supplementary Planning Documents and the Statement of Community Involvement.

**Local Development Framework (LDF):** The name for the portfolio of Local Development Documents. These consist of Development Plan Documents, Supplementary Planning Documents, a Statement of Community Involvement, the Local Development Scheme and Annual Monitoring Reports.

**Local Development Scheme (LDS):** This sets out the programme for preparing Local Development Documents. All authorities must submit a Scheme to the Secretary of State, for approval, within six months of the commencement of the 2004 Act.

**Regional Spatial Strategy (RSS):** This sets out the region's strategic policies, in relation to the development and use of land and forms part of the development plan for each local planning authority area. For the South East region the RSS will be the South East Plan.

**Saved Plans or Policies:** Previously adopted development plans may be 'saved' for three years from the date of commencement of the new Act. Any policies in now superseded development plans, adopted after the commencement of the Act, will become 'saved' policies for three years from their adoption or approval. The Secretary of State can authorise the saving of policies beyond the normal 3 year period.

**Statement of Community Involvement (SCI):** Sets out the standards which authorities will achieve with regard to involving local communities in the preparation of Local Development Documents and development control decisions. The Statement is not itself a Development Plan Document, but is subject to public examination.

**Strategic Environmental Appraisal (SEA):** A generic term used to describe environmental assessment as applied to plans, policies and programmes. The European 'SEA Directive' (2001/42/EC) requires a formal 'environmental assessment of certain plans and programmes, including those in the field of planning and land use'.

**Supplementary Planning Document (SPD):** Provides additional information and guidance in regard to policies in Development Plan Documents. Does not form part of the Development Plan and is not subject to independent examination, but must have public consultation.

**Sustainability Assessment (SA):** A tool for appraising policies, to ensure that they reflect sustainable development objectives based on social, environmental and economic factors. The Act requires such an assessment for all Local Development Documents.

