

WARD(S): SOUTHWICK AND WICKHAM/DENMEAD/WATERLOO/STAKES ROAD

WEST OF WATERLOOVILLE FORUM

8 September 2016

PROGRESS REPORT ON THE WEST OF WATERLOOVILLE MDA

REPORT OF CORPORATE DIRECTOR (SERVICE DELIVERY) (WCC)

Contact Officer: Katie Stickland Tel No: 01962 848 182

RECENT REFERENCES:

WWF86 – Progress Report – 17 March 2016

EXECUTIVE SUMMARY:

This report outlines the progress made on various planning and community development matters since the last Forum meeting in respect of the West of Waterlooville MDA and outlines some of the next stages in the development process.

RECOMMENDATIONS:

That the Forum notes the progress made in bringing forward the West of Waterlooville MDA development

WEST OF WATERLOOVILLE FORUM

8 September 2016

PROGRESS REPORT FOR THE WEST OF WATERLOOVILLE MAJOR DEVELOPMENT AREA (MDA)

REPORT OF CORPORATE DIRECTOR (SERVICE DELIVERY) (WCC)

DETAIL:

1 Introduction

- 1.1 The West of Waterlooville MDA build out has now been progressing on site for over 8 years and the development and community are really starting to shape. An update sheet has been included as an appendix to give an overview of the development that has taken place during in this time (please see Appendix 2). The latest community news newsletter is also attached at Appendix 3.

2 General updates

- 2.1 Katie Stickland took up the position of West of Waterlooville Implementation Officer in mid-May.
- 2.2 There have been two Advisory Group meetings and a community engagement evening since the last meeting of the Forum.

3 Update of Actions

- 3.1 Following a question raised by a member of the public at the last meeting, it can be confirmed that the planting of grass on the northern side of River Street is in line with the permitted plans. A demarcation line has been left in to show the land to be adopted by Highways and the front garden of the properties.
- 3.2 The link bridge between the Grainger and Taylor Wimpey sites is due to be completed in September, and will open for general use after satisfactory safety audits have been completed.

4 Taylor Wimpey

- 4.1 Residential units on phases 1 to 4 of the Taylor Wimpey development are now completed. With the exception of the show homes, all of phases 1 and 2 are occupied. Total occupations are now over 460.
- 4.2 The Phase 5 residential development is well underway and completion is expected within the next 24 months.
- 4.3 The Wellington Vale nursing home is due to open in Autumn 2016, marketing can be seen at <https://www.cinnamoncc.com/luxury-care-homes/wellington-vale>

- 4.4 The adjacent extra care home is due to be finished in October / November 2016 and is also being marketed.
- 4.5 Taylor Wimpey has been working with Highways England to fulfil its obligation to improve junction 3 of the A3(M). The works are now dependant on Highways England contractor confirming the costs (expected mid November) and scheduling the work.
- 4.6 Works on the Western Open Space section owned by Taylor Wimpey has been delayed due to bad weather earlier in the year. The current landscape works require the use of heavy machinery and where areas have been planted the planting needs time to become established. This has meant the space could not be opened for the summer. The programme includes more work in the coming planting season. This should be completed in early 2017 with adoption by Winchester City Council soon after.
- 4.7 Millstone Landscapes arranged a tour, primarily for residents, to learn about the scheme of works, on the 18 August. This part of the site has been put forward to BALI (the British Association of Landscape Industries) for consideration in their national awards for regeneration projects.
- 4.8 The City Council has commenced the adoption process with Taylor Wimpey (TW) to take control of the open spaces within the residential areas. TW will have to rectify issues identified by the Council before formal adoption can take place.
- 4.9 Delays in confirmation of requirements from Hampshire County Council has meant that some roads have had raised iron works for over two months. This has caused minor damage to resident and visitor vehicles. However it is understood that works to resolve this issue should be carried out shortly.
- 4.10 Concerns have been raised by residents over the volumes of traffic and use of trade vehicles accessing the Household Waste Recycling Centre (HWRC). This will be reviewed in the stage 3 safety audit to be completed prior to highway adoption. It should be remembered that this is not the long term primary access route to the HWRC.
- 4.11 Employment land is still being marketed but, as yet, interest in the site has not resulted in firm offers being made.

5 Grainger

- 5.1 Bloor Homes are developing Phase 1. Compliance monitoring has identified a few issues in relation to the installation of water butts and planting in the mews areas. This is being followed up by the Implementation Officer and Grainger. Apartments are now being built as planned on what was the sales centre car park.
- 5.2 Construction work has started on the private rental scheme and this is currently being built from the edge closest to London Road backwards.

- 5.3 Redrow Homes are constructing Phase 2 and have created a temporary drainage system to address an issue with water run off affecting properties in Purbrook Gardens. There have been some buildings which were not built to permitted plan and the developer hopes to regularise the situation through a retrospective planning application.
- 5.4 Sales for Phases 1 and 2 are being reported as strong. Images of Phase 2 were used on the front page of the Redrow company annual report.
- 5.5 Grainger has completed all the infrastructure for Phase 3 and a reserved matters application for 296 new dwellings is expected in late September. The draft proposals for phase 3 have been reviewed by officers and amendments are being made based on comments provided. Once the application has been received it will be publicised and this will provide an opportunity for the local community and other interested parties to comment on the plans. Work was expected to start on site as soon as planning permission was obtained later in the year, but all housebuilders are currently reviewing their plans in the light of market conditions and some slowdown in delivery would not be surprising.
- 5.6 Grainger are now actively pursuing interest from businesses in the employment land allocation which is large enough to compete with other strategic sites in the area. The City Council has indicated that it would be willing to offer support where possible if there is competition between sites to attract appropriate uses which would generate good long term business rate generation. Plans for the mixed use area at the entrance to the Grainger site off the Maurepas Way roundabout include a hotel, public house, coffee shop and offices and a number of operators have expressed a keen interest in these.
- 5.7 To improve the overall configuration Grainger would like to adjust the location of the Multi Use Games Area (MUGA) in the town park to be closer to the skateboard and youth shelter facilities. Residents and other interested parties will be given the opportunity to comment once a minor material amendment application has been received.
- 5.8 In addition to community facilities in the local centre, Grainger has proposed increasing the provision in the town park to include a café and hireable hall. This should encourage footfall and natural surveillance of this area and would provide an alternative to a public house which was originally envisaged on the Old Plant Farm land.
- 5.9 Works regarding the highways mitigation measures have been slower than anticipated and Grainger is working with HCC Highways to meet the section 106 obligations.
- 5.10 Due to the suggested changes in design and additional time required to develop these new proposals, Grainger will submit a deed of variation to the section 106 agreement to seek to prevent a breach of the planning obligations occurring.

- 5.11 The next stage of the River Wallington restoration will take place in spring 2017 with planting in the following autumn. This will join the restored section to Maurepas Way. It will be a further two years before the final section is restored.
- 5.12 Bus stops will be installed once agreed with Southwick and Widley Parish Council. The bus operator will carry out an assessment of a possible loop of phase 1 which could see the bus service extended to Berewood Primary School.
- 5.13 The reinstatement of Newlands Meadow is underway, with the wildflowers starting to appear. The ponds are currently being dug with the boardwalk following soon afterwards. It should be accessible by spring to the public.
- 5.14 Other submissions due to be lodged with the Council(s) are for:
- a) The public footpath diversion order for Footpath 30
 - b) Discharge of condition 6 for details of the pumping station
 - c) Amendment to the route of the rising main (now to serve phase 13)

6 Community Development

- 6.1 Three successful resident meetings took place in February, April and June. These have been increasingly well attended, with approximately 30 residents reflecting different phases of the WoW development at the June meeting.
- 6.2 Meetings covered overall updates of the developments, time for questions and answers and also more specifically focussed on future community space provision, Public Art and the Town Park and the Local Centre. These meetings were initially set up on a trial basis to complement the WoWAG meetings, providing more opportunity for neighbours to chat and share experiences and to involve guest speakers. Questionnaire feedback given by residents at the end of the last meeting clearly showed the meetings were very useful for attendees, were achieving their objectives and should continue longer term.
- 6.3 Many residents would like to see an events group set up for the whole WoW area and neighbourhood watch expanded to include Berewood. A Social Event will be held mid September (date as preferred by residents).
- 6.4 Meetings will continue to run alternate months to the WoWAG and will be reviewed on a regular basis. A special meeting for young people will also be held in September to give them the opportunity to have their say and to get involved in the continuing development of the community..
- 6.5 A recent multi agency meeting looking at community safety on the development noted the number of reported incidents is low. Inconsiderate parking continues to cause tension. However this is being tackled with discussions at residents meetings and friendly messages in new resident packs.

6.6 The option of using the school as a community hub is less likely as the quote was not considered viable. Grainger are now looking at options for a temporary office and community facility to be sited near the employment area E2.

6.7 Funding applications are being submitted for youth projects, including conservation volunteering which could be linked to the maintenance of the stream in the Taylor Wimpey site

7 Art Development

7.1 A pre-planning application meeting took place on 2 August when it was agreed that a condition discharge application was required for the Welcome Sculpture (see image below) and would be submitted in August. Grainger will work with Hampshire County Council to ensure that the signage on and near to the roundabout is sympathetic to the art installation.

7.2 The town park art installation, of a living sculpture of oak trees and boating pond, will be submitted with a new application for the town park area B. Grainger will provide more information about this at the forum meeting.

8 Development of a new Parish Council

8.1 There has been considerable discussion at a local level on the creation of a new parish council to cover the area of the MDA within the Winchester District (it would not be possible to create a parish council whose area crossed the Winchester City/Havant Borough boundary). The Advisory Group has been working on what would be involved in the process.

8.2 Changes to the parish arrangements can only be implemented by the undertaking of a Community Government Review. This process is undertaken by the City Council, and once the outcome is determined, any changes are implemented by the City Council making of a Reorganisation Order.

8.3 The City Council has a number of requests for Community Governance Reviews already before it. Decisions on which of these should come forward, and in which order, have been deferred pending the outcome of the Boundary review for Hampshire County Council (which is looking at the County Electoral Divisions, and which therefore may have a bearing on these Community Governance Reviews).

8.4 A Community Governance Review can be implemented either by the City Council itself as outlined above, or triggered in any event by the submission to the City Council of a petition signed by the requisite number of electors.

- 8.5 Denmead Parish Cllr Lander-Brinkley presented a report to the Advisory Group on 21 July 2016 on the process for setting up a parish council, on the assumption that this would be triggered by the submission of a petition by electors. The report set out the main steps as follows:
- (i) Publicise information about parish councils and collect expressions of interest and support for petitioning for a new parish council for the MDA.
 - (ii) Encouraging resident participation towards a shadow council.
 - (iii) Wait for the Hampshire County Council divisions to be confirmed (due August 2016).
 - (iv) Define the boundaries of the new parish.
 - (v) Choose a name for the new parish.
- 8.6 For a petition area of between 500 and 2500 local electors living within it, the petition must be signed by at least 187 to meet the criteria. In May 2016, there were 570 electors living within the area which the Advisory Group are considering for the new parish area, and therefore 187 signatures would be required to trigger the process.
- 8.7 If a valid petition is received, then the City Council must draw up terms of reference and publish these. The Review must then be completed within twelve months.
- 8.8 If a Community Governance Review is commenced, the City Council must consult the electors in the area under review, and any other person or body which appears to have an interest in the Review. Any representations received must be taken into account.
- 8.9 In carrying out the Review, the City Council has to have regard to the need to secure that community governance within the area under review:
- (a) reflects the identities and interests of the community in that area, and
 - (b) is effective and convenient.
- 8.10 The outcome of the Review is a set of recommendations, which the Council must then publish. It must then decide whether to implement those recommendations. If it does decide to implement them, a reorganisation order is then made by the City Council, which will include electoral arrangements for the new parish council.
- 8.11 The Advisory group gave feedback to Grainger on what facilities would be suitable for parish council offices if included in a local centre. This was for office space able to accommodate two people and supporting equipment (photocopier, filing storage etc), a private meeting room (minimum 3m x 3m) a meeting room of approximately 7m x 5m, and access to a kitchen and toilets.

OTHER CONSIDERATIONS:

9 COMMUNITY STRATEGY AND PORTFOLIO PLANS (RELEVANCE TO):

9.1 The establishment of a successful community at West of Waterlooville is a priority for both Havant and Winchester City Council's.

10 RESOURCE IMPLICATIONS:

10.1 There are no direct resource requirements arising from the report.

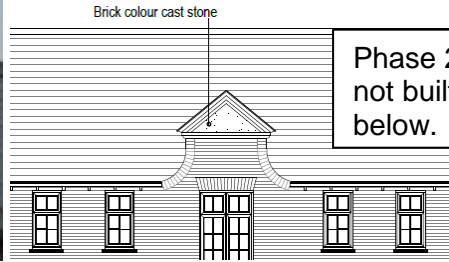
11 RISK MANAGEMENT ISSUES

11.1 There are no risk management issues arising from the report.

APPENDICES:

- Appendix 1 Site photographs
- Appendix 2 West of Waterlooville 8 years on
- Appendix 3 Newsletter

APPENDIX 1: Site photographs



Phase 2: Redrow, flat roof feature not built not to design as shown below.



Welcoming sculpture. Image of roundabout **at present**

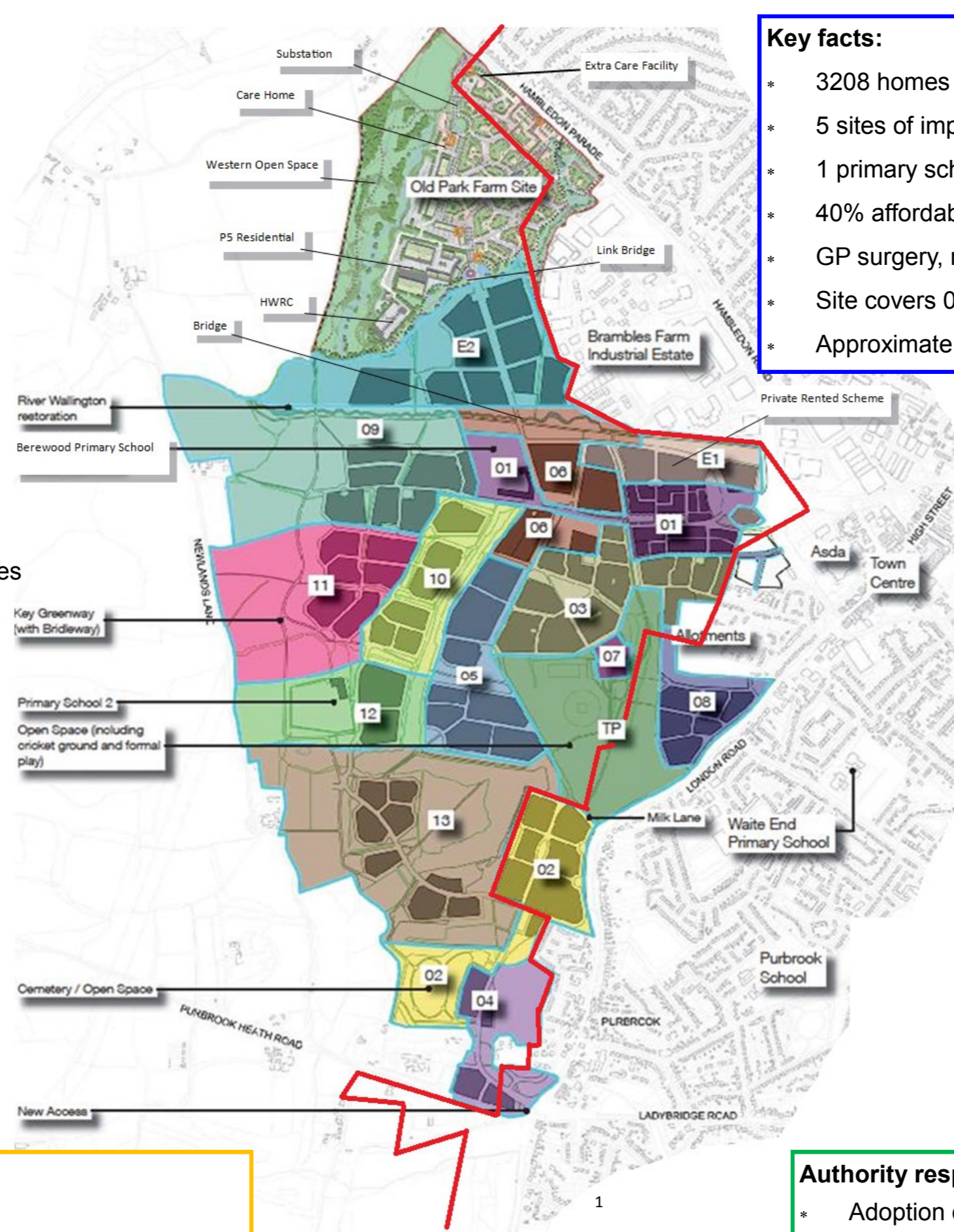
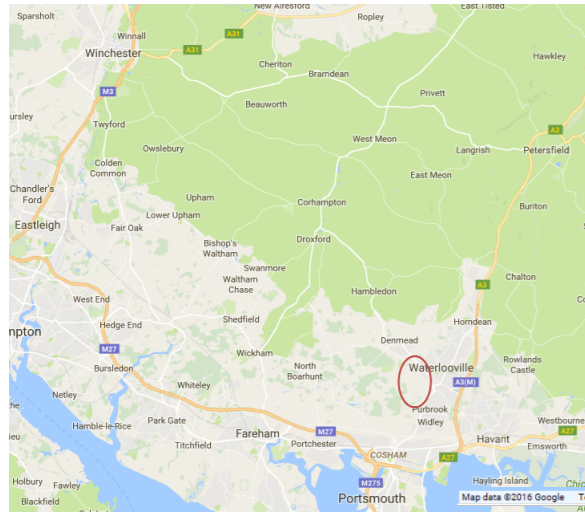


Welcoming sculpture. Artist image of sculpture **at 40 years**



Welcoming sculpture. Merged images.

West of Waterlooville 8 years on



Key facts:

- * 3208 homes (1258 full consent, 1950 in outline) of which 672 built
- * 5 sites of importance for nature conservation
- * 1 primary school operational, 1 more planned
- * 40% affordable housing
- * GP surgery, nursery, local retail, pub, café, sports pavilion
- * Site covers 0.37% of Winchester district
- * Approximate 5% population increase in Winchester district

Taylor Wimpey site:

Old Park Farm / Wellington Park

- 38.31 hectares
- 16.98 hectares of open space
- 584 dwellings and 130 units in care homes
- Dwellings per hectare range 30-55
- 2.25 hectares of employment land
- Registered housing providers include: Radian, Swaythling, Trinity, Stonewater
- Outline permission 2008
- **Housing element completion in 2018**



Grainger site: Berewood

- 209 hectares
- 102 hectares of open space (inc. town park)
- 2624 dwellings, inc. private rental scheme
- Dwellings per hectare range 20—45
- 10.3 hectares of employment land
- 13 housing phases
- 2 employment phases
- Grainger and Guinness Trusts as registered housing providers
- Outline permission granted 2012
- **Estimated completion 2030**

Key Strategic Contributions

- ◆ Meeting housing land supply
- ◆ Increasing business growth and employment opportunity
- ◆ Exemplary sustainable urban drainage system (SUDS)

Authority responsibilities

- * Adoption of open space
- * Adoption of highways
- * £21,791,495 allocated contribution to be spent (PTO)

Indicative borough boundary
WCC left, HBC right

Indicative split of remaining section 106 contributions

Hampshire County Council

- Highways*—£3,814,211
- Bus—£1,570,131
- Travel plans—£107,549
- Education*—£11,947,420
- School travel—£19,660
- Off site green links—£81,069
- Household Waste Recycling Centre—£97,675



Total: £17,637,715

SUDS

£259,771



Winchester City Council

- Arts—£400,000
- Community Centre maintenance—£174,375
- Open space commuted sums*—tbc
- Sports facilities maintenance—£31,910



Total: £606,285

TW contributions to Grainger



- Community Centre—£208,957
- Allotments—£29,363
- Sports facilities—£375,324
- Cemetery—£325,578

Total: £939,222

Havant Borough Council

- Open Space commuted sums—tbc
- Artificial turf—£124,000
- Cemetery*—£185,000
- Community Development —£350,000
- London Road—£50,000
- Purbrook Heath sports pitch—£100,000
- Leisure centre*—£1,211,250
- Employment skills development contribution*—£255,000
- Air quality—£20,000



Total: £2,348,502

NB Contribution values shown do not include indexation which will be applied.

*Contributions are conditional



Working to facilitate active community engagement...



West of Waterlooville

August 2016

Berewood & Old Park Farm

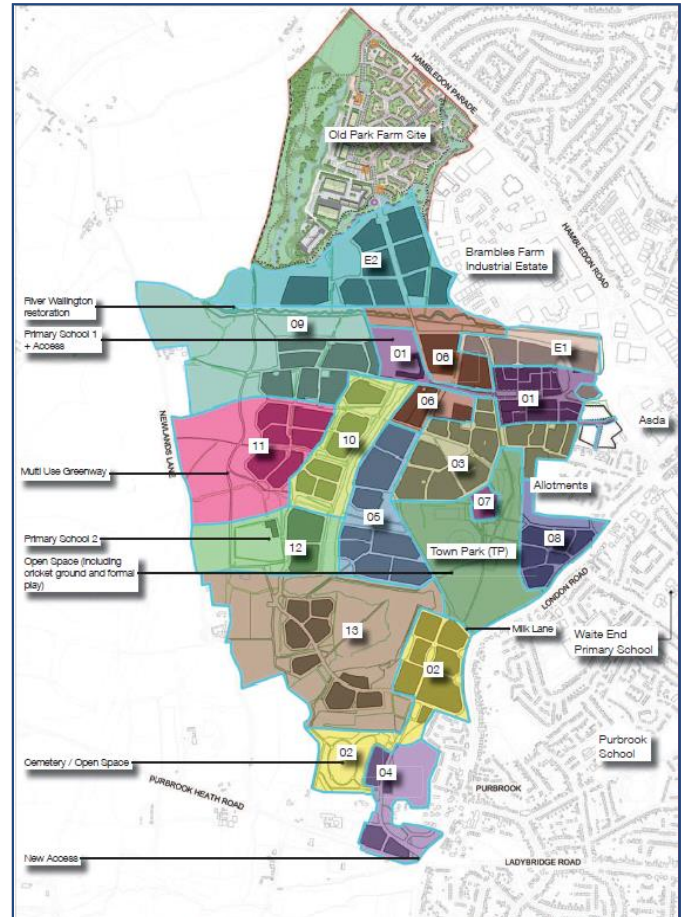
Welcome to the Summer Edition of the Community Newsletter. As well as usual development updates, we have feedback from recent Residents Meetings and information on places to go and things to do this summer.

Keeping up to date: As well as the Community Newsletter there are several other ways for residents to find out what is happening on the development. Recently we held a number of Community meetings to make it easier for residents to talk with Officers working in the area. As well as discussing key phases of the development, including the Local Centre, Town Park and Public Art, there have also been several issues raised and resolved by working together. As these meetings have been so successful they will continue to run alongside the West of Waterlooville Advisory Group (see below). Residents are also keen to arrange regular social events for the local community so watch this space!

The next Residents Meeting is taking place at 7pm on October 20th 2016 at Berewood Primary School

If you aren't able to attend meetings, there are also two online sources of information, in addition to the Council Websites that you may find useful. The WoW Development News Facebook Page and the West of Waterlooville Blog, both managed by Council Officers, have been updated and relaunched and are a great way to keep up to date with development news and meeting dates -

 **West of Waterlooville Development News**
www.westofwaterlooville.wordpress.com



The West of Waterlooville Major Development Area (MDA) includes Berewood (both Bloor & Redrow) and Old Park Farm (by Taylor Wimpey). The developments are being built out in phases which are shown above. Over the next decade a whole new community will be created with around 3000 new dwellings, a new school, a Town Park, a Local Centre, plus land for employment, allotments and lots of open green space.

West of Waterlooville Advisory Group – Working towards a New Parish Council

With Councillors from Denmead and Southwick & Widley Parish Councils, the group discusses various matters relating to the West of Waterlooville Development. You can find more information on the Denmead Parish Council Website, along with minutes of previous meetings.

The next meeting is **Thursday 29th September** at Berewood Primary School – everyone welcome!

For more information please contact Tony Daniells, the Clerk, on 023 9225 1484 or clerk@denmeadparishcouncil.co.uk



Residents would like to see a Neighbourhood Watch Scheme for Berewood

A number of people have expressed an interest in setting up a Neighbourhood Watch scheme on the Berewood Development. Schemes are already well established in Old Park Farm and have been really successful in improving links with the local police, addressing problems, as well as helping people get to know each other.

The key aspects of Neighbourhood Watch are communication, awareness and community. Being a member is not demanding and can make a real difference. Main tasks of being a member include:

- Reading information and advice that comes in from the Police and other agencies
- Taking an interest in what goes on in your community and reporting anything you see that is criminal, anti-social or suspicious
- Looking after the security of your own property, including marking of valuables
- Keeping an eye on any vulnerable neighbours
- Maintaining contact with the co-ordinator

Residents who are interested in finding out more about Neighbourhood Watch are encouraged to attend the next Residents Meeting on Thursday 20th October, 7.00pm at Berewood Community School – everyone welcome!

Parking - Important Notice

Recent meetings and conversations with residents have shown that Parking is a significant concern.

There have been numerous reports of entrance ways and garages being blocked. Knowing where to park (and where not to park) can be tricky on a new development, particularly for visitors. We are asking people to please be considerate of other road users and residents when parking their vehicles:

Please DO NOT block driveways, bollards or entrances

Please do not park in Home Zones or on Shared Surfaces

Thank you!



Berewood Community Ministry News

Many residents will have already met the Rev. John Thompson who leads the Berewood Community Ministry. Working for Waterlooville Baptist Church, John spends half his time as the Assistant Minister with responsibility for Children, Youth and Community Involvement. The other half he spends focusing on the new Berewood community. You can find out more or get in touch with John via the Berewood Community Ministry Website Berewoodcommunityministry.org.uk

What's On?

- Weekly free coffee drop-in. Wednesday 8:30-9:30 at Berewood School Hall (all welcome) during term time
- Weekly SPLAT toddlers in association with Action for Children Wednesday 9:30-11:00am at Berewood School Hall during term time
- Messy Church @ Berewood Primary School see below for dates & times
- Look out for Café Church coming soon!

Berewood Community Ministry's ...



FREE FUN FOR ALL THE FAMILY

SUNDAY 18th SEP 2016

SUNDAY 16th OCT 2016

SUNDAY 20th NOV 2016

3.30PM – 5.30 PM

JOIN US FOR FOOD, CRAFT, GAMES, STORIES AND MUCH MORE...

Berewood Primary School

**Kentidge Way, Waterlooville
PO7 3BE**



**FOR MORE INFORMATION,
AND PHOTOS OF PREVIOUS EVENTS VISIT:
www.berewoodcommunityministry.org.uk**

Berewood Community Ministry



Public Art Programme Update

It takes 700 acorns to grow a boat... and the acorns are growing!

Children from Berewood Primary School were delighted to see the 390 acorns they collected and planted last autumn have grown into 273 oak saplings up to half-a-metre tall. This Spring more than 50 children from the school got involved in re-potting the saplings, one of many events in the Public Art Programme for the Development. "It takes 700 acorns to grow a boat" is a community growing project that will eventually lead to 700 oak trees being planted by local volunteers in Berewood as the development grows.

Funded by contributions from developer Grainger PLC, 'It takes 700 acorns to grow a boat' is the first of a three-strand community engagement project being carried out by the public realm artists, Wayward, who won the contract to create two art features in the Berewood site. These community engagement projects are designed to involve people in the public art programme from the outset and will be delivered in close collaboration with local residents, arts and heritage organisations and amenity groups. Wayward and Future City attended a Community Meeting back in the Spring where the plans and ideas were presented to residents who were very interested in the ideas being proposed.

Place-making and public art agency, Futurecity, are curating and managing the project on behalf of the West of Waterlooville Arts Advisory Panel, which includes elected district and parish councillors as well as technical officers from each Council. **The Panel is keen to hear from any residents living in the development who would like to participate in future meetings. Residents should contact Jaime Bridges, the West of Waterlooville Community Officer, at**



Introducing Katie Stickland, the new West of Waterlooville Implementation Officer...

We are delighted to introduce Katie Stickland who recently joined the team as the new Implementation Officer dedicated to the West of Waterlooville. Katie's role involves providing planning support for Winchester City and Havant Borough Councils, visiting the area to make sure the contractors are building according to the approved plans and providing information for officers and councillors. Katie updates the Blog with details of planning applications and updates of what is happening. She also attends the Advisory Group and Forum meetings to provide information and answer questions (where possible). Here is a round up of the main development, for more information or to contact Katie please visit the Blog - www.westofwaterlooville.wordpress.com

- Berewood Phase 3 – Grainger have selected a development partner and detailed design is well underway. It is anticipated that a planning application will be submitted late Summer 2016.
- The Bridge – A footpath is now open joining the Taylor Wimpey & Berewood sites. The Grainger Bridge is complete, and the Taylor Wimpey Bridge is set to be complete by September. The opening will follow as soon as possible afterwards, subject to a safety audit. The opening of the Bridge will be well promoted and celebrated!
- PRS (Private Rented Scheme) – Construction of phase 1b at Berewood, which is Grainger's private rented homes, is off to a good start and you'll see the first apartments beginning to take shape over the next few months. First completions are expected Autumn 2017.
- Taylor Wimpey Development - The Nursing Home is due to be finished by the end of summer August / September and the Extra Care Home is due to be finished September / October 2016.

Weekly Activities at Waterlooville Baptist Church

As well as regular Services, there are a variety of other activities taking place at the Baptist Church in Waterlooville – everyone is welcome! Please note that sessions may run at different times during school holidays so please double check before making your journey...

Mondays

Sewing class: 9:30am

Jiggy Wrigglers: 10:00am

Boys Brigade: 6:15-7:30pm (5-11yrs),
7:15-9:30pm (11-17yrs)

Tuesdays

Gentle Chair Exercises: 11:30am

Girls Brigade: 6:00 - 7:30/8:00pm (5-17 years)

Wednesdays

Community Singers: 7:00pm

Thursdays

Art Therapy Group: 9:30am

Toddlers Session: 10:00-11:30am

Seniors Lunch Club: Thursday 12:30pm

Women's fellowship: 2:30pm

Fit and Fifty: Thursday 6:30pm

Sunday

Sunday worship celebration with full children's programme: 10:30am

Evening Service: 6:30pm

You can find us at 368 London Road PO7 7SY.
For more information, please visit waterloovillebaptist.org.uk or contact Rev John (Community Minister) on 07931 150697, communityminister@waterloovillebaptist.org.uk



L to R : Heidi Kruger, Basepoint Centre Manager; Joan Manktelow, Chair WACA CIO; Kay Swindell, Trustee, WACA CIO

Great news for Waterlooville Community Centre!



The Waterlooville branch of Basepoint Centres Limited has this year chosen Waterlooville Community Centre as its nominated charity. This means that between April 2016 and March 2017, all funds raised by the Community Centre will be match-funded up to £10,000 by Basepoint.

Heidi Kruger, Basepoint Centre Manager, said: "We are proud to be supporting our local Waterlooville Community Centre; it is a great facility for all residents of Waterlooville and the surrounding area.

Joan Manktelow, Waterlooville Area Community Association CIO Chair, comments: "The match-funding provided by Basepoint will make a huge difference to the Community Centre. As a registered charity, we are always in need of funds to help with refurbishments and repairs; the contribution from Basepoint will enable us to enhance what we offer to the diverse groups who enjoy our Centre."

For further information visit the Centre's website at www.waterloovillecommunity.org.uk or call 023 9225 6823.

WATERLOOVILLE SUMMER FETE
SUNDAY 21ST AUGUST
11AM - 3PM
AT JUBILEE PARK,
WATERLOOVILLE PO7 6AW

FREE ENTRY

SATURDAY BANDSTAND
WATERLOOVILLE TOWN
CENTRE

ROCK SATURDAY

20 AUGUST

FROM 11.30



Organised by Waterloooville Events team
Building Community for OUR Town



News from the Waterloooville Events

Team:

The next Saturday Bandstand event is taking place on 20th August from 11.30am. The Ready to Rock school will be performing along with Marmalade Moonshine, 5 musicians playing music influenced by Beatles, Artie Monkeys and Oasis. We are delighted to welcome them to Waterloooville! The Ready to Rock school are musical students from the age of 8(!) upwards. They play throughout the south Hampshire area.

Come and enjoy this free concert! For more information please visit

<http://www.readytorockschool.com>

marmalademoonshine.bandcamp.com

On Saturday 17th September the Saturday Bandstand will be hosting students from 5 secondary schools in our area. A whole range of music will be on offer and will demonstrate the fantastic musical talent that is nurtured in our local schools. Put the date in your diaries now!

Waterlooville Summer Fete- Waterloooville Recreation Ground, Jubilee Park - PO7 7HU, from 11am. Last year over 3000 people enjoyed this event so do come along! This year there will be circus performances, samba drums, dancers, singers and bands, as well as the Harriers Wheelchair Basketball team, bungee jumping, a fairground and lots of stalls... the list goes on and on.

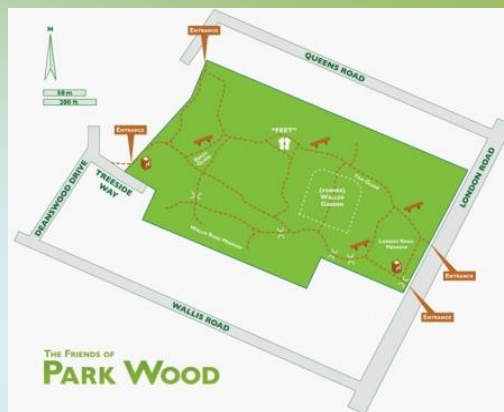
To find out more, or to keep up to date please visit our Facebook page - Waterloooville Events or email waterlooville.events@gmail.com for more information.

NEW VOLUNTEERS ALWAYS WELCOME!

On your Doorstep... Park Wood, Waterloooville

Park Wood is beautiful woodland just off the London Road in the centre of Waterloooville, opposite Queens Inclosure. It is managed by the Woodland Trust, assisted by the Friends of Park Wood, and is perfect for walking the dog or exploring with the family - there is so much to see and enjoy for everybody. You might need welly boots at this time of year but the paths make it pushchair friendly and to best of all IT'S FREE!

Why not take part in the Annual Sunday Easter Egg Hunt (see back page), its a great way to explore the Woods, follow the trail and win an Easter Egg! Or, if you want to get more involved, the Friends of Park Wood hold monthly Working Days – held on the last Sunday of each month, there are jobs for everyone and all help is appreciated. Starting at 10am, just turn up and get stuck in! Dogs and children welcome, with cake and refreshments to keep you warm.



You will find Park Wood between Wallis Road and Queens Road, opposite The Queen's Inclosure. There is plenty of on road parking (please park considerately) For more information please visit www.park-wood.org.

Merchistoun Hall Summer Fair

Saturday 3rd September, 12:00 – 4:00pm.

106 Portsmouth Road, Horndean, PO8 9LJ

Arena acts, refreshments, childrens activities, stalls plus evening entertainment.

For further information please visit
www.merchistounhall.co.uk
or telephone 023 9259 7114



The Waterlooville Community Facebook Page shares local news, events & activities happening in Waterlooville and nearby areas, run by the Community Team at Havant Borough Council. There is plenty happening so to find out more visit the Facebook Page:

www.facebook.com/waterloovillecommunity



Denmead Dinosaur Derby

Sunday 4th September 2016 @ First Denmead Scout Group Headquarters Kidmore Lane, Denmead, Hampshire, PO7 6JU. 1.30pm, first race starts at 2:00pm, Entry - £1.50 per family, sorry no dogs.

Further information

<http://www.denmeadscouts.com/event/hq-dinosaur-derby/>

Friday, 21st October 2016

at the Waterlooville Community Centre

7.00 pm – Midnight

Licensed Bar

"The King"
and a
Curry Night



Tickets: £20 each

With Love 2 Jive



Tickets available from

The Shalimar Indian Restaurant, Hambledon Parade

Waterlooville Community Centre - Tel: 023 9225 6823

and Basepoint Centres Limited, Waterberry Drive, Waterlooville, PO7 7TH

ARTS & CRAFT

MILK CHOCOLATE TUCK SHOP

YOU ARE INVITED

TO A

NEW YOUTH CLUB OPENING

COME ALONG TO OUR FREE TASTER SESSION FOR PIZZA AND POPCORN AT THE RKDIA CENTRE NEAR HORNDEAN VILLAGE.

WHEN

THURSDAY 1ST SEPTEMBER
6 - 8 pm

WHERE

RKDIA, PORTSMOUTH RD,
HORNDEAN, WATERLOOVILLE PO8 9NN

PICK UP A MEMBERSHIP PACK AND SHARE YOUR IDEAS FOR FUTURE ACTIVITIES!

PLAYSTATION, XBOX, WII

POOL TABLE

FILMS

HANG OUT WITH FRIENDS

ANY QUESTIONS PLEASE CONTACT GROUP CO-ORDINATOR, SAM GURNEY:
07763649834

Horndean NYC Youth Club

DENMEAD FILM NIGHTS



Community Centre
School Lane, Denmead



Brooklyn

(12A) 111 mins

**Saturday 27th August
7.30pm**

An Irish immigrant lands in 1950s Brooklyn, where she quickly falls into a new romance. When her past catches up with her, however, she must choose between two countries and the lives that exist within. Terrific cast (the estimable Saoirse Ronan, Domhnall Gleeson, Julie Walters, Jim Broadbent) in Nick Hornby's adaptation of the best-seller by Colm Toibin. "Brooklyn is one of those rare films that's written, acted and directed with such elegance, it never gets boring or disengaging". One of the hits of the Sundance Festival in 2015, it is a film of grace and beauty and Saoirse Ronan's central performance is of Oscar quality.

Tickets: £5.00

DCA members may claim discount



DENMEAD COMMUNITY CENTRE
School Lane, Denmead, Hampshire, PO7 6LU
Telephone: 023 9225 6132
E-mail: manager@denmeadca.com Website: www.denmeadca.com
Registered Charity No. 275728
Located at the junction of the Hambledon Road B.2150 and School Lane, with the car park entrance in School Lane
AMPLE FREE PARKING AVAILABLE

Hart Plain Church
Hart Plain Avenue, Cowplain

Arts and Crafts Evening

Friday, 23rd September 2016

7:00pm - 9:30pm

Refreshments Available

Hart Plain Art Group Exhibition
with

Crochet
Needlepoint
Flower Arranging
Sugarcraft
Jewellery
Greetings Cards
..... plus much more

(some demonstrations will be held throughout the evening)

Your County Councillor – Here to Help

If you are a WCC resident and have an issue or a concern, your local Councillor may be able to help: Please remember I am always willing to listen and help people when I can. You can attend my drop-in surgery which is held at **All Saints Church, Denmead, in the Heath Room, at 10.00am – 12 noon on the first Saturday of every month.** No appointment needed, or you can contact me by email: pgstallard@aol.com.

With best wishes,
Patricia Stallard, County Councillor
(Winchester Southern Parishes)

If you are a Havant Resident, your County Councillors are;

Cowplain & Hart Plain – Councillor David Keast
david.keast@hants.gov.uk

Waterloo & Stakes North – Councillor Ann Briggs
ann.briggs@hants.gov.uk

For more information, visit www.hants.gov.uk.



Denmead Youth Clubs

Denmead Youth Partnership organises & runs clubs on Monday, Tuesday and Wednesday in termtime at **Ashling Pavilion** in the main Park at Denmead

The clubs cover a variety of different age groups & interests

Sport
Computers
Cookery

Wednesday 7 - 9 pm
Traditional Youth Club for the older age group (13 - 19 yrs) informal approach, snooker able tennis, advice, etc

Games
Drama
Arts & Crafts

Monday 6 - 8 pm
a more structured club for younger children - 8 yrs +

Technical Workshop

Trips

Tuesday
6 - 8 pm 8+ year olds
8-9 year olds Young leaders Hour (Many of the 11 yr plus prefer to attend this session & move onto the young leader programme).

If you / your children would like to attend but have transport difficulties please talk to Jaime or contact Felicity on 023 9226 1977. Otherwise just drop in and see us.

West of Waterlooville – a new Parish Council...

With the adoption of highways and open spaces fast approaching, Winchester, Havant, Denmead and Southwick & Widley Councils are working together to plan for the future. As the Berewood development progresses, a new Parish Council will be established for the area and the West of Waterlooville Advisory Group are working together to make this happen. The following article helps explain what you can expect from your Parish Council – if you are interested in learning more about the Parish Councils, or would like to get involved in supporting the development of the new Parish Council, please join us at the next Advisory Group Meeting taking place on Thursday 29th September, 7pm at Berewood Primary School

What is a Parish Council?

There are over 8,700 Parish and Town councils in England representing around 16 million people. They form the most local level of government and cover both rural and urban areas. In the West of Waterlooville development most of the new development lies within two Parish Councils, called Denmead Parish Council (the Taylor Wimpey houses) and Southwick & Widley Parish Council (the Grainger houses). Both parishes are part of the Winchester City district. Some houses are in Havant Borough Council's area but Havant does not have parishes. Each year the Parish Council asks for a sum of money, called a 'precept', which is collected with your council tax. This money is used by the parish council to improve facilities and services for local people and run the Council – local money, spent locally.

What services can a Parish Council provide?

A parish council has an overall responsibility for the well-being of its local community. Its work falls into three main categories:

- representing the local community
- delivering services to meet local needs
- striving to improve quality of life in the parish

Within the whole of Denmead, the Parish Council provides and/or maintains the following services: play areas, car parks, community transport schemes, footpaths and bridleways, litter and dog waste, burial grounds, bus shelters, some street lighting, open spaces and sports fields, and support Crime Reduction Measures. It can also work with Hampshire County Council and Winchester City Council and be involved in other services, for example Litter Bins, Local Youth Projects, Public Toilets, Planning, Street Cleaning, Street Lighting & Traffic Calming.

For more information please visit
www.denmeadparishcouncil.co.uk & for
Berewood Residents please visit
www.southwick-widley-pc.gov.uk

Useful Contacts

Winchester City Council

01962 840 222

www.winchester.gov.uk

Havant Borough Council

023 9244 6019

www.havant.gov.uk

Denmead Parish Council:

023 9224 7947

www.denmeadparishcouncil.co.uk

Southwick & Widley Parish Council:

023 8046 3228

www.southwick-widley-pc.gov.uk

Community Officer – Jaime Bridges

jaime.bridges@havant.gov.uk

0772 007 6272

Guinness Hermitage - General Enquiries

0300 303 8034

Out of Hours Emergencies

0300 200 0015

Grainger Trust – General enquires

0207 940 9500

Out of Hours Emergencies

0345 300 5824

Radian - General Enquiries

0300 123 1 567

Out of Hours Emergencies

0800 783 8937

Trinity - 0845 345 1584

Police (Emergency): 999

Police (NON Emergency): 101

NHS Direct (NON Emergency): 111

www.westofwaterlooville.wordpress.com