



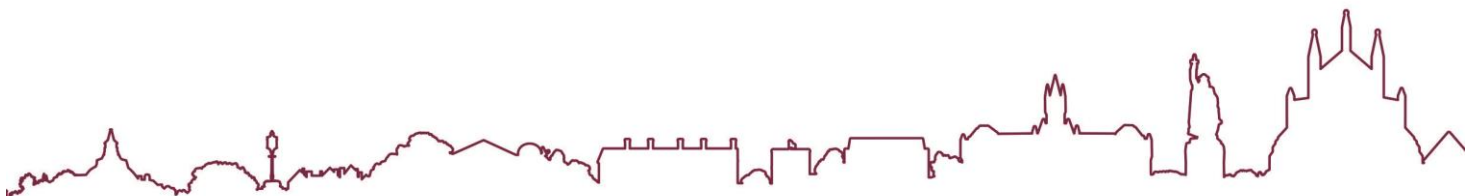
Meeting	Local Plan Advisory Group
Date and Time	Wednesday, 8th March, 2023 at 6.00 pm.
Venue	This meeting will be held virtually and will be streamed live on YouTube at www.youtube.com/winchestercc

S U P P L E M E N T A R Y A G E N D A

An additional slide has been included in the presentation pack.
This is slide number 33 which is shown on page 35 of the attached pack.

03 March 2023

Agenda Contact: Matthew Watson, Senior Democratic Services Officer
Tel: 01962 848 317, email: mwatson@winchester.gov.uk



This page is intentionally left blank



LOCAL PLAN UPDATE

Regulation 18 Consultation

LPAG meeting 8th March 2023



KEY AREAS OF FOCUS FOR THE PLAN:

Local Plan Regulation 18 Consultation Period: **02 November to 23:59 hours on 14 December 2022**

Page 4

Where we
are with the
LOCAL PLAN



ENGAGEMENT & OUTCOME

- All of the consultation techniques that we used for the SIP consultation were reviewed as we were keen to expand on our award winning approach to see what other techniques we could use to engage with the maximum number of people.
- Increased our radio and press coverage of the LP consultation as well as undertaking a number of LP drop-in events across the district and two specialised online events.
- Officers attended a number of lunchtime drop-in events at Sparsholt College, University of Winchester and the Peter Symonds College.
- The number of respondents to this public consultation was even higher than the SIP public consultation.



KEY AREAS OF FOCUS FOR THE PLAN:



Vision and Objectives



**Carbon Neutrality and Designing
for Low Carbon Infrastructure**



**High Quality Well-Designed Places
and Living Well**



**Sustainable Transport and
Active Travel**



**Biodiversity and the Natural
Environment**



The Historic Environment



Homes for all



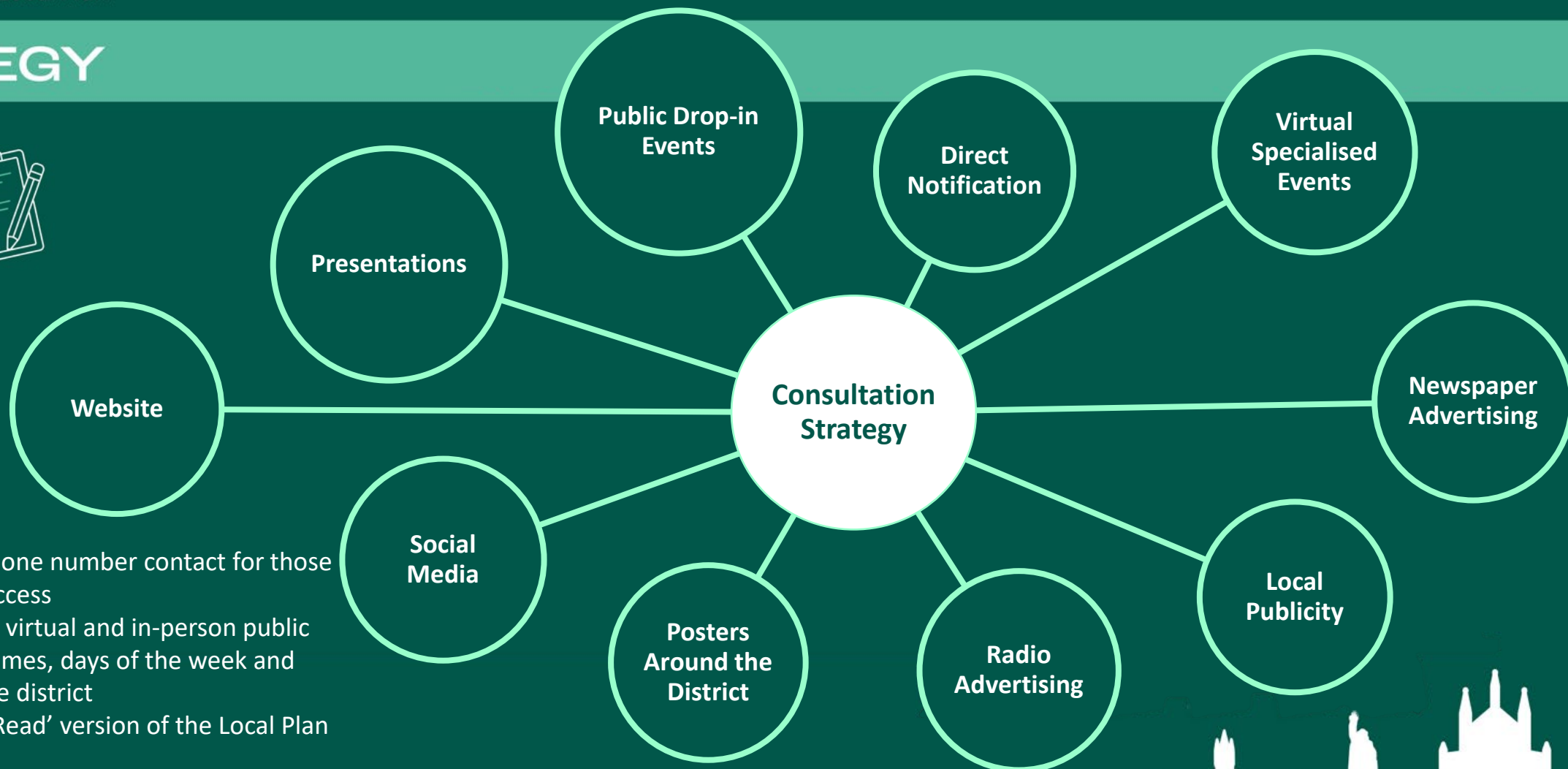
Creating a Vibrant Economy



STRATEGY



Page 7



ACCESSIBILITY

- Advertised with phone number contact for those without internet access
- Completed various virtual and in-person public events at various times, days of the week and locations across the district
- Provided an 'Easy Read' version of the Local Plan



ENGAGEMENT

OUTCOME

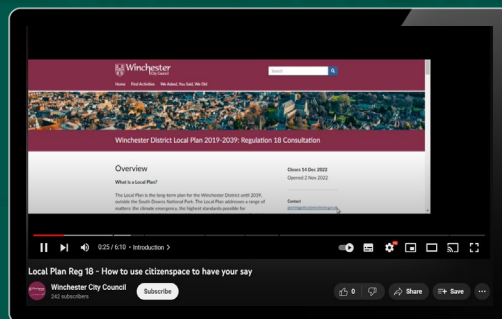
18 Facebook
Posts

Reach:
8346 (organic)
6957 (paid)

Engagement:
301 (organic)
811 (paid)

398

PEOPLE WATCHED THE VIDEO ON HOW TO
SUBMIT YOUR COMMENTS ON CITIZEN SPACE



7777

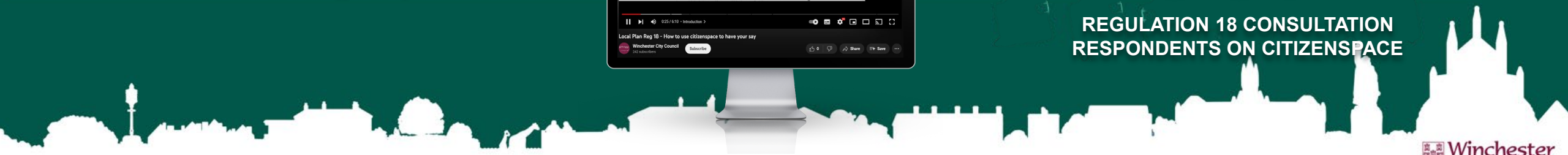
TOTAL WHICH STATED THEY EITHER SUPPORTED, OBJECTED
OR NEITHER SUPPORTED OR OBJECTED

3438

WRITTEN RESPONSES

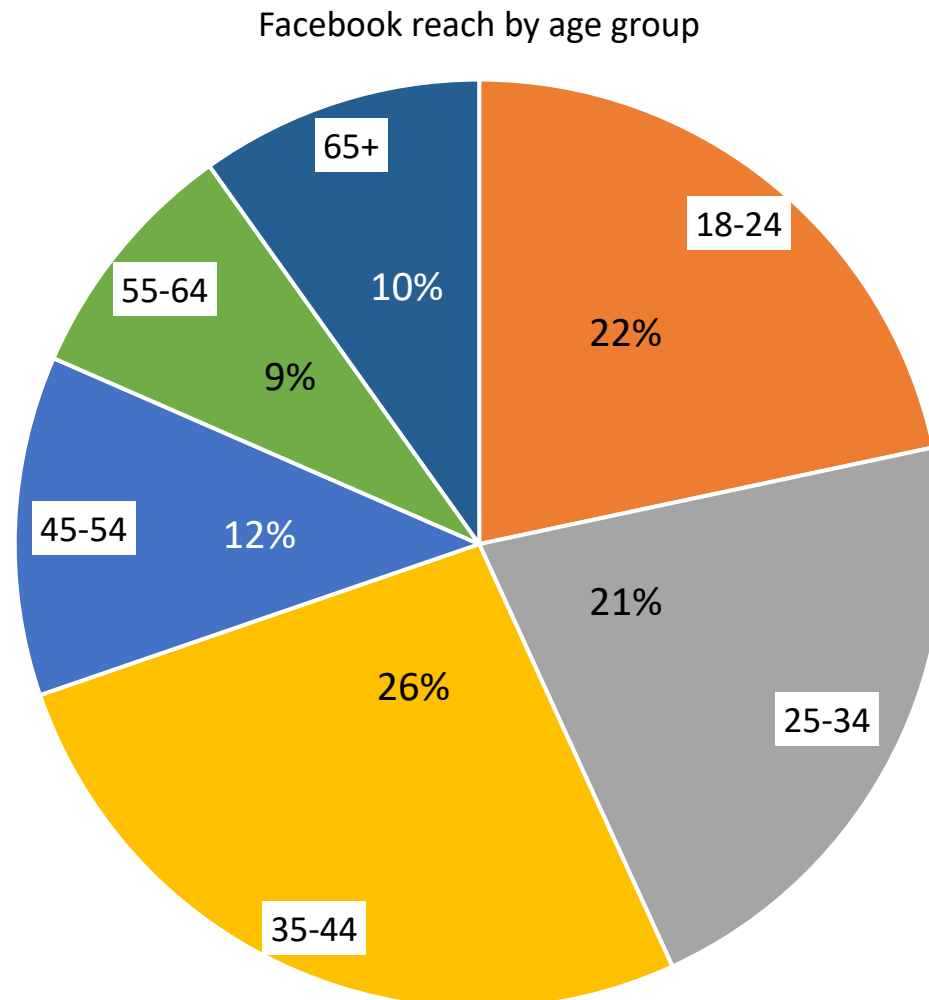
967

REGULATION 18 CONSULTATION
RESPONDENTS ON CITIZENSPEACE



ENGAGEMENT

OUTCOME



DESIGN AND BRANDING GETTING THE MESSAGE OUT THERE

Winchester City Council utilised continuous paid advertising in regional radio stations to publicise the consultation.

On Winchester Radio, the advertisement was
broadcast **6 TIMES PER DAY,**
EVERY 3 HOURS, BETWEEN 06:00-
11:59, **EVERY DAY** OF THE WEEK

Page 10



On Bauer Media Digital Stations, the
advertisement reached **250,016**
impressions over the 6-week
consultation period, all within the Winchester
District.



GREATEST
HITS
RADIO



Absolute
Radio



250,016

DIGITAL CAMPAIGN IMPRESSIONS



YOUR PLACE YOUR PLAN. DESIGN AND BRANDING GETTING THE MESSAGE OUT THERE

Winchester District Local Plan

Winchester City Council used paid advertising in newspapers to publicise the consultation.

These half page advertisements were released in three different papers at the beginning, middle and end of the consultation period.

Page 11

These papers were:
The Hampshire Chronicle
Mid Hampshire Observer
Portsmouth News

Advertisements could be seen in both digital and hard copies of the newspapers.

A **statutory notice** was also published on 02 November 2022.

Winchester City Council Public Notice
Winchester District Local Plan 2039
- Consultation Draft Local Plan
(Regulation 18: Preparation of a Local Plan)
Planning and Compulsory Purchase Act 2004
Town and Country Planning (Local Planning) (England) Regulations 2012

Winchester City Council has published a 'Consultation Draft Local Plan' under Regulation 18 of the above Regulations for a period of 6 weeks from 2nd November 2022 until midnight on 14 December 2022. The Draft Local Plan consultation invites you to submit your views on the draft policies and site allocations that the new Local Plan 2039 needs to include. This consultation will inform the 'publication' version of the draft Local Plan, which will be published for further consultation in August 2023.

The new Local Plan 2039 will cover all of Winchester District except for the part within the South Downs National Park (which has its own Local Plan). The Draft Local Plan will set out the development strategy and policy framework for the area and allocate or designate land accordingly. Once adopted, the new Local Plan will be used to guide decisions on planning applications up to 2039.

The Draft Local Plan has taken into account comments received on the 'Strategic Issues & Priorities' consultation document, published February 2021. This set out alternative ways in which the District (outside the National Park) might be able to accommodate the development that it needs to plan for and what the future strategic vision should be for the District. These have helped the Council to develop the planning policies and site allocations contained in the Draft Local Plan. An 'Integrated Impact Assessment' (including Sustainability Appraisal) and a Habitats Regulations Assessment of the draft Local Plan is also published for consultation.

The consultation documents and associated evidence documents can be viewed online on the City Council's website: www.localplan.winchester.gov.uk where information is available on how to submit responses electronically (the preferred method). Paper copies of the consultation documents are available at City Council's main reception and at local libraries. Comments can be emailed to planningpolicy@winchester.gov.uk or can be submitted by post to Planning Policy Team, Winchester City Council, City Offices, Colebrook Street, Winchester, SO23 9LJ.

All responses should be received by 23:59 hours on 14 December 2022. Please be aware that anonymous responses cannot be accepted and all comments will be made available on the Council's website (address and contact details will not be released).

Adrian Fox
Strategic Planning Manager, 2nd November 2022


The collage displays various newspaper advertisements for the Winchester District Local Plan 2039 consultation. The ads are from The Hampshire Chronicle, Mid Hampshire Observer, and Portsmouth News. They feature headlines such as 'Bubble tea addition to cafe scene', 'Traffic safety fears at new housing development', 'Affordable homes development is beginning to come together', and 'Weekender festival set to go again'. Each ad includes the 'YOUR PLACE YOUR PLAN' logo and information about the public consultation period from November 2nd to December 14th, 2022.

Winchester District Local Plan

Let us know what you think here: www.localplan.winchester.gov.uk

This special newsletter is brought to you by the Planning & Highways Committee of Bishop's Waltham Parish Council in conjunction with Winchester City Council

WINCHESTER CITY COUNCIL DISTRICT
DRAFT LOCAL PLAN



New Alesford Town Council

[Search this site](#)

Local Plan 2039

Notification of Public Consultation of the Regulation 18 draft Local Plan 2039


The draft 'Regulation 18' Local Plan has gone out for consultation and will run until midnight on **Wednesday 14 December 2023**.

Thousands of you have helped to create the plan to this stage and we'd like all residents, businesses and organisations to have their say on the next stage of creating a plan that will look to shape the development across the district.

Some key themes include create environment, affordable homes, and protecting and enhancing our natural environment.

There are several drop in events across the district in the coming weeks – with the first next **Monday 7 November** in Kings Worthy and **Friday 11 November** in Hittisley. You can attend any of the sessions regardless of where you live in the district.

[Click here to view the Local Plan Public Consultation Calendar](#)



**YOUR PLACE
YOUR PLAN.**
WIMBORNE DISTRICT LOCAL PLAN

LOCAL PLAN

2019 - 2039

PUBLIC CONSULTATION

HAVE YOUR SAY ON THESE TOPICS

Both online and hard copy provisions of **newsletters, notices** and **articles** supported residents, businesses, charities, and organisations to have their say.



YOUR PLACE YOUR PLAN.

Winchester District Local Plan

DESIGN AND BRANDING GETTING THE MESSAGE OUT THERE



507

Posters printed and distributed across the district

POSTERS SENT TO:

Parish Councils
WCC Departments
Gyms and Leisure Centers
GP Surgeries / Hospital
Bus stops
Colleges and Universities
Places of Worship
Community Centers
Libraries
Car parks
Public Notice boards

WITH SUPPORT FROM:

Estates Team
Business Support Team
Sheltered Housing Team
Customer Services Team
Facilities Team
Community Safety Team
Environmental Services Team

YOUR PLACE YOUR PLAN.

Winchester District Local Plan

DESIGN AND BRANDING GETTING THE MESSAGE OUT THERE

Page 14



HARD TO REACH GROUPS GETTING THE MESSAGE OUT THERE

In recognition that Gypsies and Travellers are hard-to-reach groups, Winchester City Council employed **Opinion Research Services (ORS)** to reach out and contact these communities.

ORS prepared the Gypsy and Traveller Accommodation Needs Assessment.

Gypsy and Traveller groups in the Winchester District were sent a letter encouraging them to speak to ORS directly about any new sites or provide comments on draft policies.

An **Easy Read** version of the draft Local Plan was also produced to increase accessibility for those with disabilities and other hard-to-reach groups.



In order to reach young people, the Strategic Planning team engaged in **social media advertising** and **lunchtime pop-up events** at Peter Symonds College, Sparsholt College, and the University of Winchester



EVENTS - GAINING INFORMATION

SPECIALISED VIRTUAL EVENTS

Our specialized virtual events were during the consultation on topics of carbon neutrality, homes for all and design. These included presentations guest speakers who are experts in the field of topics chosen.

Raising the Bar on Design
15 November 2022



**- Setting the Standard on Net Zero
Carbon Homes**
23 November 2022

158
TOTAL VIRTUAL EVENT
ATTENDEES

213
VIEWS OF LIVE EVENT
YOUTUBE RECORDINGS

LIVE EVENTS

Page 16

-  LinkedIn - Advertisement and promotion
-  Eventbrite - Attendee Management
-  MS Teams - Hosting live events
-  YouTube - Publishing event recordings



EVENTS - GAINING INFORMATION

PUBLIC DROP-IN EVENTS

INCREASED ACCESSIBILITY BY:

- Multiple locations in the North, South and Centre of the District
- long sessions between 14:30-19:00
- Alternating days of the week
- Accessible locations and venues
- Mixture of online and in-person events

Date	Time	Location	Number of attendees
Monday 07 November	14:30-19:00	Kings Worthy	10
Friday 11 November	14:30-19:00	Whiteley	29
Friday 18 November	14:30-19:00	Bishops Waltham	73
Tuesday 22 November	14:30-19:00	Winchester	27
Thursday 24 November	14:30-19:00	Colden Common	51
Tuesday 29 November	15:30-19:00	Littleton and Harestock	37

EVENTS - GAINING INFORMATION

PUBLIC DROP-IN EVENTS



TOTAL OF AT LEAST

227

PUBLIC DROP-IN
EVENT ATTENDEES

AT LEAST **37** HOURS in face-to-face consultation with the public, including universities, colleges, online Q&As and drop-in sessions around the district.

EVENTS - GAINING INFORMATION

PRESENTATIONS

Before and during the Regulation 18 consultation period for the draft Winchester District Local Plan 2039, several presentations were held at the following events to reach a wide range of groups and organisations.

These presentations are regarded as a key method of public consultation, informing attendees allowing for questions and debates that further understanding and engagement.

Date	Time	Meeting/Organisations
01 November	18:00-19:30	West of Waterlooville Forum
04 November	08:00-12:00	Chamber of Commerce & Business Improvement District
09 November	18:30-20:00	Town Forum Briefing
15 November	15:00-17:00	Parish and Town Council Liaison Meeting
21 November	11:00-12:00	NHS Modernising our Hospitals and Health Services Programme Partner Group
30 November	14:00-15:30	University of Winchester



Consultation responses

Vision and Objectives

Written comments to analyse	
Policy SP1 - Vision and Objectives	84
Policy SP2 Spatial Strategy and Development Principles	90
Policy SP3 Development in the Countryside	44
Total	218



Consultation responses

Carbon Neutrality and Designing for Low Carbon Infrastructure

Written comments to analyse	
Policy CN1 Mitigating and Adapting to Climate Change	73
Policy CN2 Energy Hierarchy	34
Policy CN3 Energy Efficiency Standards to Reduce Carbon Emissions	73
Policy CN4 Water Efficiency Standards in New Developments	24
Policy CN5 Renewable and Low Carbon Energy Schemes	39
Policy CN6 Micro Energy Generation Schemes	17
Policy CN7 Energy Storage	11
Total	271



Consultation responses

High Quality Place and Living Well

Written comments to analyse	
Policy D1 High Quality, Well Designed and Inclusive Places	53
Policy D2 Design Principles for Winchester Town	30
Policy D3 Design Principles for South Hampshire Urban Areas	5
Policy D4 Design Principles for Market Towns and Rural Villages	20
Policy D5 Masterplan	37
Policy D6 Brownfield Development and Making Best Use of Land	46
Policy D7 Development standards	13
Policy D8 Contaminated Land	8
Policy D9 Impact of Overheating	10
Policy D10 Shopfronts	7
Policy D11 Signage	6
Total	235

Consultation responses

Sustainable Transport and Active Travel

Written comments to analyse

Policy T1 Sustainable and Active Transport and Travel	88
Policy T2 Parking for New Developments	55
Policy T3 Promoting Sustainable Travel Modes of Transport and the Design and Layout of Parking for New Developments	40
Policy T4 Access for New Developments	24
Total	207



Consultation responses

Biodiversity and the Natural Environment

Page 24

Written comments to analyse

Policy NE1 Protecting and Enhancing Biodiversity and the Natural Environment in the District	66
Policy NE2 Major Commercial, Educational and MOD Establishments in the Countryside	10
Policy NE3 Open Space, Sport and Recreation	38
Policy NE4 Green and Blue Infrastructure	37
Policy NE5 Biodiversity	46
Policy NE6 Flooding, Flood Risk and the Water Environment	29
Policy NE7 Settlement Gaps	78
Policy NE8 South Downs National Park	17
Policy NE9 Landscape Character	36

Written comments to analyse

Policy NE10 Protecting Open Areas	77
Policy NE11 Open Space Provision for New Developments	17
Policy NE12 Equestrian Development	9
Policy NE13 Leisure and Recreation in the Countryside	9
Policy NE14 Rural Character	31
Policy NE15 Special Trees, Important Hedgerows and Ancient Woodlands	27
Policy NE16 Nutrient Neutrality Water Quality Effects on the Special Protection Areas (SPAs), Special Areas of Conservation (SACs) and Ramsar Sites of the Solent and the River Itchen	21
Policy NE17 Rivers, Watercourses and their Settings	16
Total	564

Consultation responses

The Historic Environment

Written comments to analyse		
	Policy HE1 Strategic Policy	12
	Policy HE2 All Heritage Assets (both designated & non-designated)	7
	Policy HE3 Designated Heritage Assets	3
	Policy HE4 Non-Designated Heritage Assets	7
Page 25	Policy HE5 Mitigation and Avoiding the Loss of Heritage Assets (designated and non-designated heritage assets)	8
	Policy HE6 Scheduled monuments and nationally important non-designated assets	5
	Policy HE7 Non-designated archaeological assets	3
	Policy HE8 Applications Affecting Listed Buildings	6
	Policy HE9 Change of use to Listed Buildings	7
	Policy HE10 Development in Conservation Areas	11
	Policy HE11 Demolition in Conservation Areas	6
	Policy HE12 Registered Historic Parks and Gardens	10
	Policy HE13 Non-Designated Historic Rural and Industrial Heritage Assets	4
	Policy HE14 Improvements or Alterations to Improve the Energy Efficiency of Designated and Non-Designated Historic Assets	8
	Total	97

Consultation responses

Homes for All

Page 26

Written comments to analyse		
Policy H1 Housing Provision	251	
Policy H2 Housing Phasing and Supply	39	
Policy H3 Spatial Housing Distribution	64	
Policy H4 Development within Settlements	27	
Policy H5 Meeting Housing Needs	54	
Policy H6 Affordable Housing	56	
Policy H7 Affordable Housing Exception Sites to Meet Local Needs	15	
Policy H8 Small Dwellings in the Countryside	1	
Policy H9 Purpose Built Student Accommodation	13	
Policy H10 Houses in Multiple Occupation (HMOs)		4
Policy H11 Housing for Essential Rural Workers		6
Policy H12 Provision for Gypsies, Travellers and Travelling Showpeople		13
Policy H13 Safeguarding Traveller Sites		0
Policy H14 Authorised Traveller Site Intensification		1
Policy H15 Authorised New / Expanded Traveller Sites		2
Policy H16 The Nurseries, Shedfield		2
Policy H17 Carousel Park, Micheldever		5
Policy H18 Tynefield, Whiteley		1
Total		554



Consultation responses

Creating a Vibrant Economy

Written comments to analyse	
Policy E1 Vibrant Economy	20
Policy E2 Spatial Distribution of Economic Growth	11
Policy E3 Town Centres Strategy and Hierarchy	12
Policy E4 Retail and Main Town Centre Uses	12
Policy E5 Enhancing Employment Opportunities	3
Policy E6 Retaining Employment Opportunities	8
Policy E7 Maintaining the Vitality and Viability of Town Centres	9
Policy E8 Local Shops, Services and Facilities	10
Policy E9 Economic Development in the Rural Area	12
Policy E10 Farm Diversification	13
Policy E11 Visitor-Related Development within the Countryside	5
Total	115

Consultation responses

Development Allocations - Winchester

Written comments to analyse	
W1 Barton Farm Major Development Area	27
W2 Sir John Moore Barracks	55
W3 St Peter's Car Park	16
W4 Land West of Courtenay Road	108
W5 Bushfield Camp	60
W6 Winnall	12
W7 Central Winchester Regeneration	23
W8 Station Approach Regeneration Area	20
W9 Bar End Depot	10
W10 Former River Park Leisure Centre site	26
W11 University of Winchester / Royal Hampshire County Hospital	46
Total	403

Consultation responses

Development Allocations - South Hampshire Urban Areas

Written comments to analyse	
SH1 West of Waterlooville, including Newlands	8
SH2 North Whiteley	21
SH3 Whiteley Green	4
SH4 Solent Business Park	3
SH5 Little Park Farm	3
SH6 Botley Bypass	6
Total	45

Consultation responses

Development Allocations – The Market Towns and Rural Area - Bishops Waltham

Written comments to analyse	
BW1 The Vineyard/Tangier Lane (Bishop's Waltham)	5
BW2 Albany Farm (Bishop's Waltham)	4
BW3 Tollgate Sawmill (Bishop's Waltham)	10
BW4 Land north of Rareridge Lane (Bishop's Waltham)	99
Total	118



Consultation responses

Development Allocations – The Market Towns and Rural Areas – New Alresford

Written comments to analyse	
NA1 The Dean (New Alresford)	3
NA2 Sun Lane (New Alresford)	3
NA3 Neighbourhood Plan Designated Area (New Alresford)	13
Total	19



Consultation responses

Development Allocations – The Market Towns and Rural Areas – **Colden Common**

Written comments to analyse

CC1 Clayfield Park (Colden Common)	18
CC2 Colden Common Farm (Colden Common)	17
CC3 Land at Main Road (Colden Common)	21
CC4 Land adjoining 85 Church Lane (Colden Common)	12
Total	68



Consultation responses

Development Allocations – The Market Towns and Rural Areas – Kings Worthy

Written comments to analyse

KW1 Cornerways & Merrydale (Kings Worthy)

12

KW2 Land adjoining the Cart & Horses (Kings Worthy)

15

Total

27



Consultation responses

Development Allocations – The Market Towns and Rural Areas – Wickham

Written comments to analyse	
WK1 Winchester Road Housing and Open Space Allocation (Winchester Road and Mill Lane)	8
WK2 The Glebe Housing and Open Space Allocation (Wickham)	7
WK3 Welbourne Open Space (Wickham)	9
WK4 Ravenswood (Wickham)	15
Total	39



Consultation responses

Development Allocations – The Market Towns and Rural Areas – Denmead, Hursley, Otterbourne, South Wonston, Swanmore and Waltham Chase

Written comments to analyse	
Denmead	
D1 - Neighbourhood Plan Designated Area	14
Hursley	
HU1 – Neighbourhood Plan Designated Area	6
Otterbourne	
OT01 – Land East of Main Road	22
South Wonston	
SW01 – Land at West Hill Road North	40
Swanmore	
SW1 – The Lakes	11
Waltham Chase	
WC1 – Morgans Yard	20
Total	113

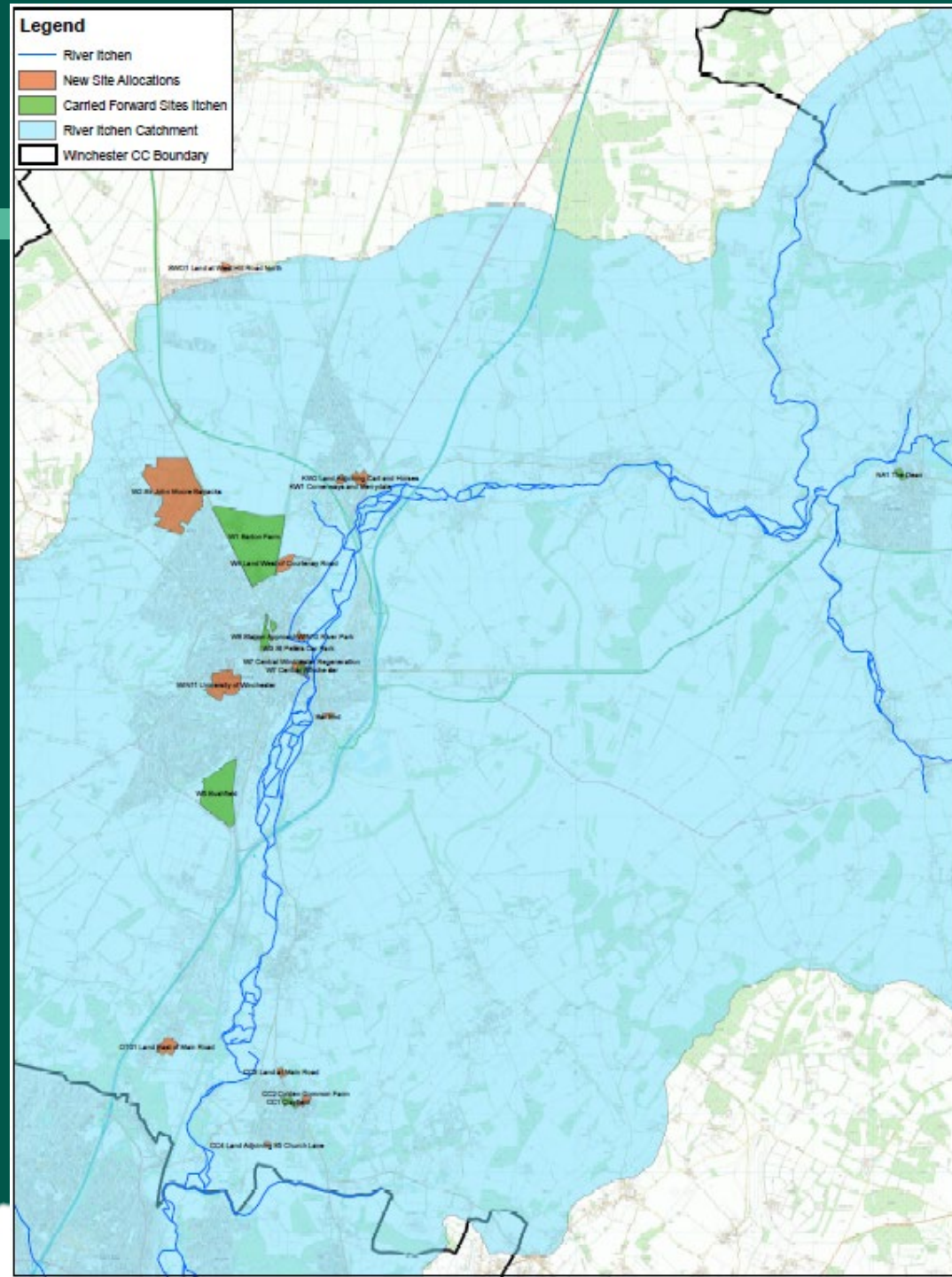
Consultation responses

Evidence Base

Evidence Base	Number of comments to analyse
IIA	30
Settlement Hierarchy	19
SHELAA	13
Development Strategy and Site Selection	10
Public Consultation	7
Future Local Housing Need and Population profile assessment	4
HRA	2
Sustainability appraisal	3
Windfall assessment report	2
Local Plan transport assessment stage 1 report	3
Winchester City Council playing pitch strategy and action plan	2
Green Infrastructure framework	1
Winchester District Strategic Housing Market Assessment	1
Interim Position Statement of student accommodation in Winchester to inform local on 2038	1
HCC Air quality framework	1
Interim Position Statement of student accommodation in Winchester to inform local on 2038	1
Local Plan Viability Assessment	1
Employment Land Study	1
Total	102

Evidence Base not commented on	
Green Economic Development Strategy	0
Gypsy and Traveller Accommodation Needs Assessment	0
LETI Net Zero Energy Target Report	0
Local Plan Design South East workshop reports	0
Natural England – GI mapping	0
Retail, Leisure and Town Centre Study	0
Review of the need for nutrient neutral development in the Budds Farm Wastewater treatment works	0
Winchester City Council Landscape Character Assessment	0
Winchester City Council Open Space Assessment	0
Winchester Movement Strategy	0

Nutrients – sites that fall within the River Itchen catchment area



- We are currently working with PfSH and others, to identify a nutrient budget for the LP and solutions on how we can address the issue of nutrients before we can proceed to the Reg 19 stage;
- We will be shortly contacting site promoters that have their sites allocated in the Reg 18 LP and asking them demonstrate the deliverability of their sites and how they intend to address nutrients; and
- It has become clear that we will need a combination of measures to address the issues of phosphorus as it is more complicated than nitrates.



Proposed changes to the NPPF

- Consultation closed on 2 March 2023
- Asked for a response to 57 questions
- A response has been submitted from the Cabinet Member for Place and the Local Plan
- Key point was that housing still is established by the standard method as the starting point... but exceptional circumstances relating to character of areas might justify a different approach.



This page is intentionally left blank