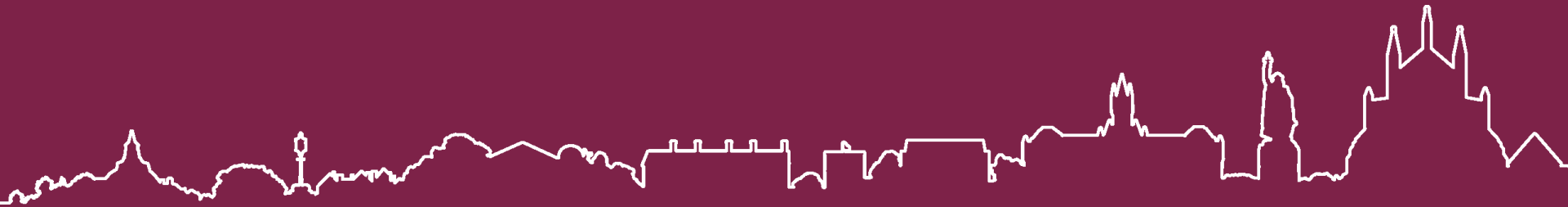


Winchester Carbon Neutrality Action Plan 2020-2030 - Progress Update

Health & Environment Policy Committee 4 March 2020





Implementation and governance



'The climate crisis is the biggest challenge all of us face in the coming years and decades. Winchester must play its part in tackling the crisis and hand our district to our children and grandchildren in a better state than it is now.'

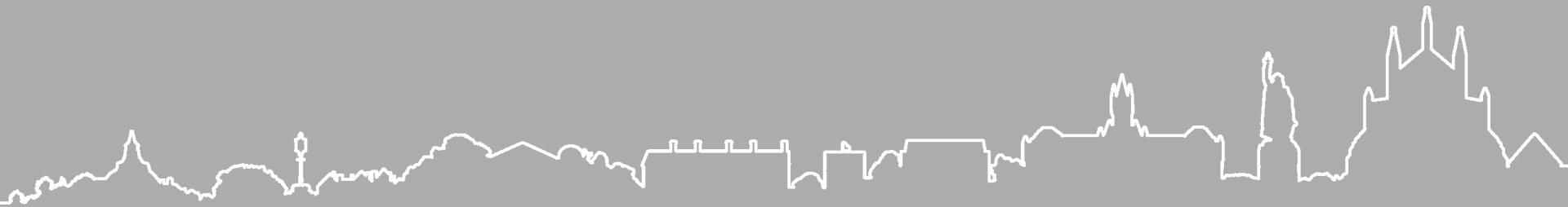
WINCHESTER CITY COUNCIL
COUNCIL PLAN 2020-2025



PURPOSE OF THE ACTION PLAN

This Action Plan will focus on:

-  Actions the council will take to reduce/eliminate or offset its own carbon emissions;
-  Actions the council can take to support and help others; individuals, businesses, agencies and organisations etc., to take action so that the district becomes carbon neutral;
-  Actions that promote climate resilience including on biodiversity; waste and recycling, planning and development; and commerce and economy.



SECTION 2: PRIORITIES

PROPOSED PRIORITY ACTIONS

By focusing on these three priorities, the proposed ten priority actions below will help address nearly all of the council's carbon emissions by 2024 and contribute to reducing emissions district wide by 2030.

A full set of actions for each priority is given in the action plan at the end of this document.



TRANSPORT

1,500 tonnes CO₂e through council operations and 287,000 tonnes CO₂e district emissions.

- Deliver key studies in 2020 to take forward the City of Winchester Movement Strategy which have a focus on achieving carbon emission reduction:
 - Walking & Cycling Strategy
 - Freight Strategy
 - Parking & Access Strategy
- Develop an expanded network of EV charging points across the district – starting with up to 46 points on the council's own estate by 2024, adding to existing provision and working with partners to identify where more are needed;
- Develop additional Park & Ride facilities to increase capacity starting with the Vaultex site with at least 130 new car park spaces in 2020.



ENERGY

1,780 tonnes CO₂e through council operations and 172,000 tonnes CO₂e district emissions overall.

- Source 100% of all electricity purchased by the council from renewable sources by 2021;
- Build or invest in large scale renewable generation project(s), e.g. solar farms, heat pumps, solar-battery car ports, anaerobic digester, wind farm.



PROPERTY/HOUSING

420 tonnes CO₂e through council operations and 193,000 tonnes CO₂e district emissions overall.






- To develop a council led pilot Passivehaus housing scheme in Micheldever by 2021;
- To invest an additional £1m per annum on energy and water efficiency measures to council housing stock;
- To bring forward the Local Plan update with an emphasis on low carbon housing development by 2021.

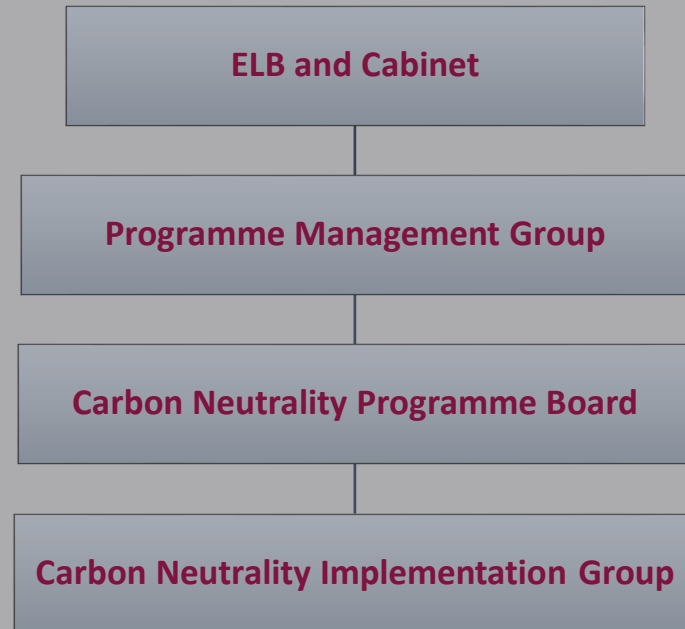


MITIGATION/OFFSETTING

- Develop a programme of rewilding starting with planting at least 100 trees annually on council land;
- In collaboration with partners and landowners, identify up to 100 hectares of land to support additional tree planting and/or creation of grassland / wetland habitat / rewilding.

GOVERNANCE AND RESOURCES

-  Use and report to existing management structures
-  Embed actions in Service Plans
-  Create a board to review progress and ensure delivery
-  An officer team to come together to develop and manage projects
-  New projects will capture carbon impact



PLACE CARBON NEUTRALITY AT THE OF ALL THE COUNCIL DOES

| Principle | Approach | Progress |
|-------------------------------|--|---|
| Be a leader | All reports and decisions must have sustainability assessment. | <ul style="list-style-type: none"> Trialling a tool with Transformation, New Home and Estates teams which will identify positive, negative or no carbon implications for proposed projects. |
| Ways of working | The Procurement Strategy will include a requirement to consider environmental and social value within contract assessment. | <ul style="list-style-type: none"> New Procurement Strategy to be considered by Cabinet on 11th March 2020. |
| | Green Team formed. | <ul style="list-style-type: none"> Volunteers have created a Green Team of approximately 15 members of Council staff; looking to pursue terracycling of normally unrecyclable products, roll out sustainable palm oil city, seasonal- low impact recipes; Guildhall to go single use plastic free by 2021. |
| | Staff commuting. | <ul style="list-style-type: none"> Survey of WCC staff commuting methods to generate data for a carbon footprint assessment and to use to promote car sharing and smart mobility. |
| Collaborative Approach | Role the council plays as influencer working along side other agencies and partners. | <ul style="list-style-type: none"> Working with WinACC, University of Southampton (to be procured), Portsmouth CC and Eastleigh BC, BID, University of Winchester. |
| | Advise householders on the immediate and short term actions they can take. | <ul style="list-style-type: none"> LEAP (Local Energy Advice Programme) launched 14 January 2020. |
| | A district wide approach to engagement. | <ul style="list-style-type: none"> School Parliament on Climate Emergency – 18th March. |
| Deliver Projects | Deliver priority projects early. | <ul style="list-style-type: none"> LED and solar installed on Council property. Energy advisory service launched. New P&R site. |
| | All schemes/projects must be graded with sustainability/ carbon emissions. | <ul style="list-style-type: none"> New project registration and assessment process set in place by Project Office. |
| | Create a grant fund on the council's crowd funding platform to support projects. | <ul style="list-style-type: none"> Crowd funding platform launched 5 February and funds opened 10 February. |

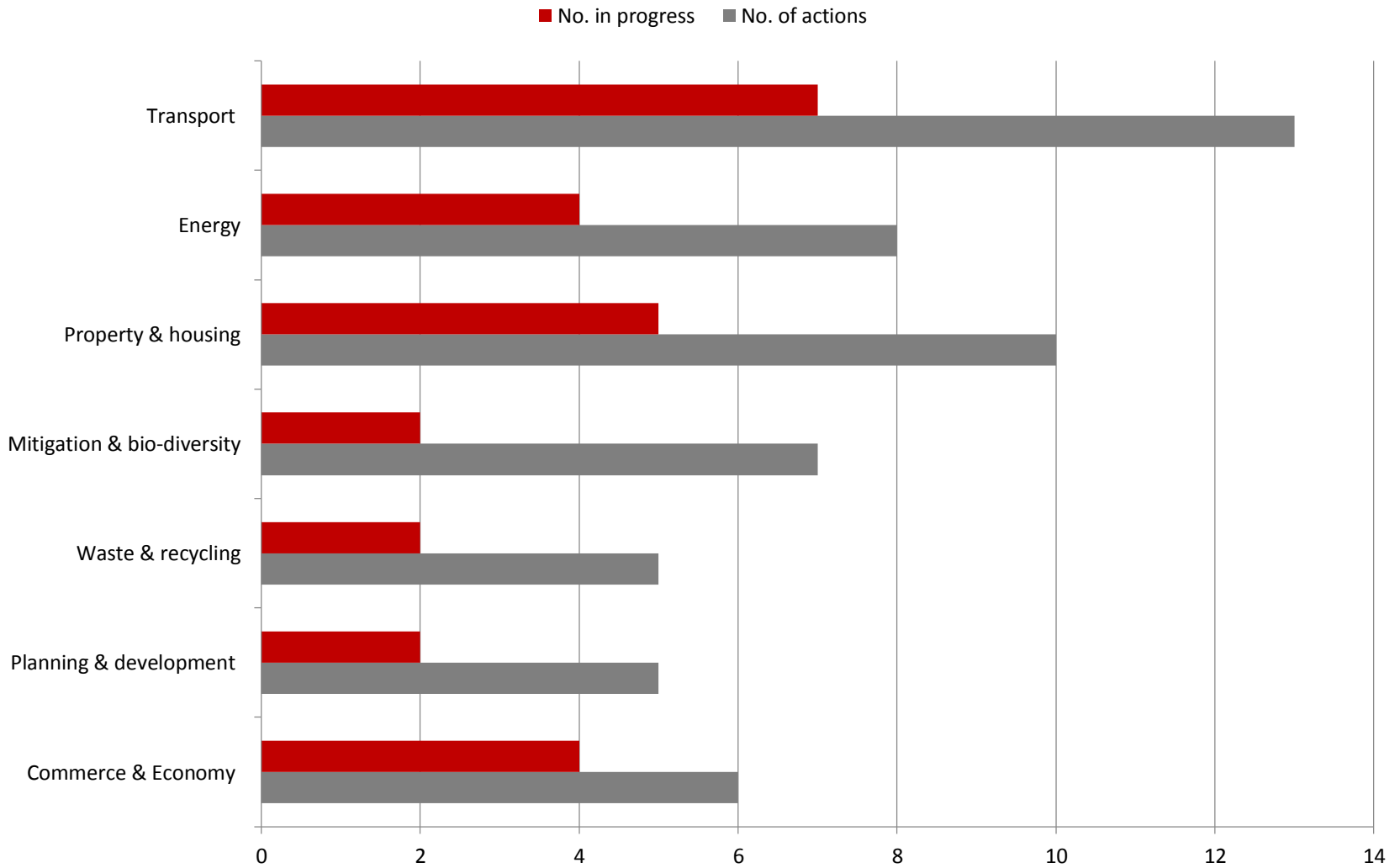


Progress to date

June 2019 to March 2020



NUMBER OF PROJECTS IN PROGRESS





TRANSPORT

1,500 tonnes CO₂e through council operations
and 287,000 tonnes CO₂e district emissions.

| Priority | Progress |
|---|---|
| Electric Vehicle Charging Network across council estate. | <ul style="list-style-type: none">• Council approved delivery programme for 2020/21 at 22nd January Cabinet.<ul style="list-style-type: none">• A budget of £150,000 has been allocated in 2020/21 for the installation of up to 32 Electric Vehicle (EV) charging points in car parks across the district.• Parking and Access Strategy - consultation closed 5 February – 1,725 responses.<ul style="list-style-type: none">• Parking charges to be invested in:<ul style="list-style-type: none">• new Sunday park & ride;• improved bus routes;• secure cycle parking at bus stops. |
| Deliver key Movement Strategy studies. | |
| Buses and taxis to be low emission / alternative fuel by 2030. | <ul style="list-style-type: none">• Expression of interest for EM3 LEP funding in development for investment in infrastructure. |
| Additional park & ride facilities. | <ul style="list-style-type: none">• Vaultex site under construction for 130 space available later this year. |
| Seek investment for smart mobility measures at park & ride gateway sites. | <ul style="list-style-type: none">• Funding application to EM3 LEP has been submitted for £4.6M to install enhanced smart measures at the Vaultex site. |
| Implement differential parking charges for low emission vehicles. | <ul style="list-style-type: none">• Considered within Parking & Access Strategy. |
| Expand and enhance public transport services. | <ul style="list-style-type: none">• Investment fund proposed within Parking & Access Strategy for improvement to parking infrastructure and access such as busses and cycling. |



ENERGY

1,780 tonnes CO₂e through council operations and
172,000 tonnes CO₂e district emissions overall.

Priority

Progress

100% electricity purchased from renewable sources.

Install additional solar panels on council property.

Feasibility of hydrogen generation plant.

Engage major businesses to work jointly on initiatives to reduce or generate energy.

Invest £1M annually in energy & water efficiencies measures in housing stock.

- Council electricity will be from renewable sources from April 2020 = 20% net saving of carbon emissions.
- In December 2019, we installed 22 solar panels on the council's special maintenance depot in Winnall, which will generate up to 7000 kilowatt of eco-friendly energy each year.
- In March Chilcomb pavilion will have solar installed and the solar power will be used to heat the hot water with innovative cylinders.
- Visit to hydrogen generation plant on 11th February .
- Business case for investment in energy generation with two major businesses.
- Priority will be on the poorest performing homes and options for investments considered.



PROPERTY/HOUSING

420 tonnes CO₂e through council operations and
193,000 tonnes CO₂e district emissions overall.

Priority

Progress

Complete a Re:Fit review of all council property.

LEAP programme to help households in fuel poverty.

Deliver campaigns on energy reduction and energy supplies for tenants and homeowners.

- Initial assessment of council property with recommendations for the energy efficiency measures to install completed by end February.
 - Re:Fit programme framework agreement to be signed by end of March.
 - West Wing Refurbishment:
 - Installation of LED lighting with daylight dimming and presence detection & upgrade of windows to improve thermal performance.
 - Brooks underground car park LED upgrade with presence detection controls.
 - Tower Street multi storey car park – additional lighting controls have led to a further 10% reduction in consumption on top of those achieved by the LED upgrade in 2017.
 - Cipher House – Solar, draught proofing and heating controls.
-
- Scheme launched in January and promoted in the February resident's newsletter.
-
- Sustainability officer to give a presentation on energy & money saving tips to the tenant focus groups in Feb/Mar.



MITIGATION/OFFSETTING

Priority

Progress

Plant at least 100 trees annually on council land.

- 334 new trees over two days (1-2 Feb) at Newlands Walk Open Space, Waterloooville. Thanks also to all the volunteers, Winchester Action on Climate Change (WinACC), the University of Winchester, IBM, HSBC and the teams from other local businesses who helped.
- 200 trees at Winchester Sport & Leisure Park.

Deliver works to protect and support our exiting tree stock.

- Council approved at 22nd Jan cabinet to procure the services of tree contractors to undertake works to Winchester City Council owned and managed trees.



CLIMATE EMERGENCY ACTIONS

| Waste & recycling | Progress |
|---|--|
| Digital transformation projects for online access and to reduce printing. | <ul style="list-style-type: none">• The Tenant Engagement Team are analysing their carbon footprint and looking at means of reducing this by converting to electronic correspondence. Sustainability officer to give a presentation on energy & money saving tips to the tenant focus group. |
| Add further waste streams to recycling services. | <ul style="list-style-type: none">• 756 tonnes of class recycling collected (Oct to Dec 2019)<ul style="list-style-type: none">• This is a 40% increase in volumes collected (216 tonnes) over the same period in 2018. 216 tonnes additional glass equates to 50 tonnes of carbon being offset. |

| Planning & development | Progress |
|--|---|
| Local Plan Review sets new standards for development and land use. | <ul style="list-style-type: none">• Parish meeting to share Local Plan evidence base studies for transport, housing, employment and retail.• Meeting for environmental / sustainability groups to see Local Plan evidence base and to debate issues planned for May. |
| Council developments incorporate environmental measures. | <ul style="list-style-type: none">• Sport & Leisure Park - additional solar.• Bishops Waltham Depot – renewable heating. |

CLIMATE EMERGENCY ACTIONS

Commerce and Economy Progress

Help business exploit local carbon economy opportunities.

- Incuhive support service assisted 3 “eco” businesses.
- Survey of BID members to access support grant from Green Tech.
- ERDF funding applied for to support local businesses adopt energy efficient, low carbon retrofits (£10k per business).
- In addition to support for businesses in the low carbon sector for business development (10k average per business).
- Business engagement started to establish unified approach to carbon.

Work with festivals to reduce carbon impact.

- Work with Boomtown reduce impact.
- Guildhall to set guideline for festival /event hirers.
- Design Festival to include carbon impact measures.
- Cultural network meeting to discuss sustainability.

Provide local business improvement programme.

- Working with WinACC to research the most appropriate support programme.

Create a sustainability / low carbon grant fund on the Crowd Funding Platform.

- Crowdfunding platform launched 5 February - fund opened 10 February. The council has a £120,000 fund to support this exciting new initiative.

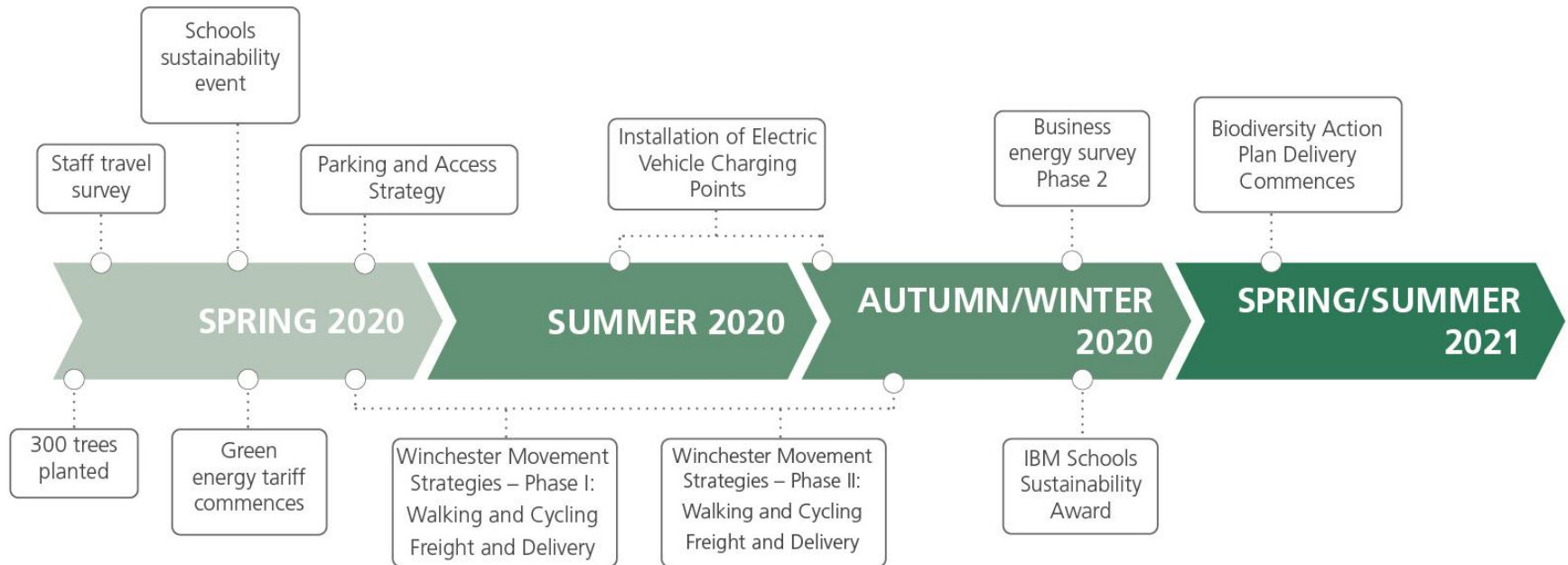


Next Phase

April to June 2020



PROJECT TIME LINE



- **Winchester’s defences against flooding will be strengthened by the completion of the Durgate flood relief scheme which was granted full planning permission in November 2019.**
- **The Council is sponsoring the Digital Innovation category of the Winchester Business Excellence awards launched 6 February 2020.**
- **ERDF grant applied for - 50% match funding to install innovative energy efficiency measures on council property at Meadowside Leisure Centre, Casson Block and Chilcomb Pavilion to commence July 2020 (if successful).**
- **Climate conference (Summer 2020) to bring stakeholders together to review progress and agree action on priorities with outcome of gaining a joint commitment to enable the district target to be met.**

Thank You -
Questions and comment

