

## **Winchester Safer Neighbourhood Policing**

### **Officer Uplift**

In Hampshire, we're planning to recruit almost 600 new officers by March 2021 as part of the first phase of our recruitment. This is made up of 156 (Year One of the national uplift), filling 93 current vacancies and replacing the 250 officers we expect to leave the organisation over that period. The rest is made up from nearly 100 recruits we'll need to bring in during the second and third years of the uplift. We've already done one round of recruitment and are processing those and we'll be back out at the start of January 2020.

On police staff, we can get on with some of our plans and we're already looking to add additional resource into key teams to support the uplift, such as recruitment, vetting and learning and development.

### **Crime Summary**

Violence against the person has seen an 18.1% rise. However, the offence type is broken down into offences that have been with or without injury. There are many different crime categories within these areas, including malicious communications (social media), low level stalking and harassment and also common assaults. I am reassured to know that there has only been a 1.8% rise in offences of violence with injury.

The force remains focused towards the issues of high harm. The challenges that come along with the county lines presents a constant threat to the district, so it's important that we are on the front foot in terms of proactive work and that the excellent Fortress partnership work continues.

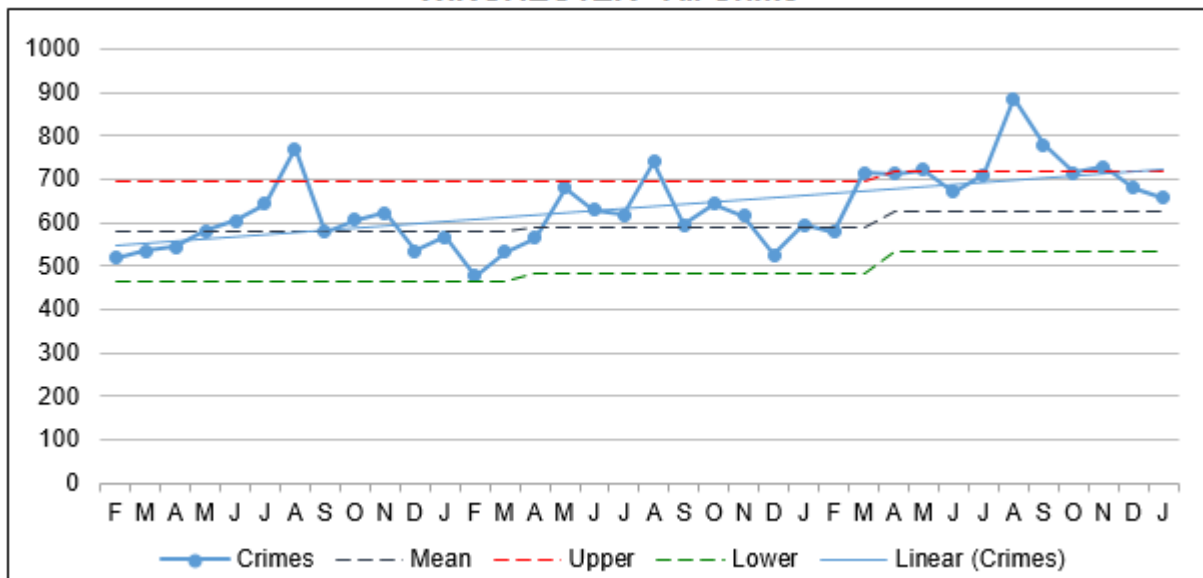
Theft offences account for 41% of our total crime, this is up by 23% YTD. The vast amount of this shoplifting and vehicle crime. The persistent offenders have been identified, prosecuted and civil orders have been utilised to restrict their opportunity to offend. This has made significant reductions in the last quarter.

Spare change for lasting change to discourage street begging. The rebranding and additional promotion work has doubled the annual contributions. £200 can provide 6 counselling sessions and as little as £5 can provide a hot home cooked evening meal and a bed for the night for somebody facing homelessness.

There has been significant reduction in anti-social behaviour (11%). This has been achieved by working closely in partnership, utilising a variety of tactics, but also providing key support to some of the most vulnerable members of our community. The introduction of the BID Rangers has also provided valuable support in terms of dealing with issues in the city.

An organised crime group from Micheldever were identified as responsible for over 100 burglary offences, some on district, but many others across the county. On 17th December over 120 police officers were involved in a dawn raids, 6 arrests were made and an impressive amount of stolen property was recovered. Most significantly, this operation stemmed the flow of the burglary series

### WINCHESTER - All Crime



**Winchester District Crime Performance 1<sup>st</sup> April 2019 – 10<sup>th</sup> Feb 2020 (compared to YTD date from 1/4/18 to 6/2/19)**

Current period	WINCHESTER CITY ↑	WINCHESTER GREATER ↑	WINCHESTER RURAL ↑	TOTAL
1 Violence Against the Person ↑	1,274	665	380	2,319
2 Sexual Offences ↑	141	48	70	259
3 Robbery ↑	34	4	5	43
4 Theft Offences ↑	1,444	941	668	3,053
5 Criminal Damage and Arson Offences ↑	304	266	100	670
6 Drug Offences ↑	122	46	65	233
7 Possession of Weapons Offences ↑	23	6	9	38
8 Public Order Offences ↑	375	191	91	657
9 Miscellaneous Crimes Against Society ↑	113	49	14	176
<b>Total</b>	<b>3,830</b>	<b>2,216</b>	<b>1,402</b>	<b>7,448</b>

Previous period		WINCHESTER CITY ↑	WINCHESTER GREATER ↑	WINCHESTER RURAL ↑	TOTAL
1 Violence Against the Person	↑	1,048	636	280	1,964
2 Sexual Offences	↑	112	74	74	260
3 Robbery	↑	33	6	5	44
4 Theft Offences	↑	1,096	898	488	2,482
5 Criminal Damage and Arson Offences	↑	305	268	126	699
6 Drug Offences	↑	101	28	114	243
7 Possession of Weapons Offences	↑	26	16	9	51
8 Public Order Offences	↑	310	157	67	534
9 Miscellaneous Crimes Against Society	↑	66	27	25	118
<b>Total</b>		<b>3,097</b>	<b>2,110</b>	<b>1,188</b>	<b>6,395</b>

Variance (current - previous)		WINCHESTER CITY ↑	WINCHESTER GREATER ↑	WINCHESTER RURAL ↑	TOTAL
1 Violence Against the Person	↑	226	29	100	355
2 Sexual Offences	↑	29	-26	-4	-1
3 Robbery	↑	1	-2	0	-1
4 Theft Offences	↑	348	43	180	571
5 Criminal Damage and Arson Offences	↑	-1	-2	-26	-29
6 Drug Offences	↑	21	18	-49	-10
7 Possession of Weapons Offences	↑	-3	-10	0	-13
8 Public Order Offences	↑	65	34	24	123
9 Miscellaneous Crimes Against Society	↑	47	22	-11	58
<b>Total</b>		<b>733</b>	<b>106</b>	<b>214</b>	<b>1,053</b>

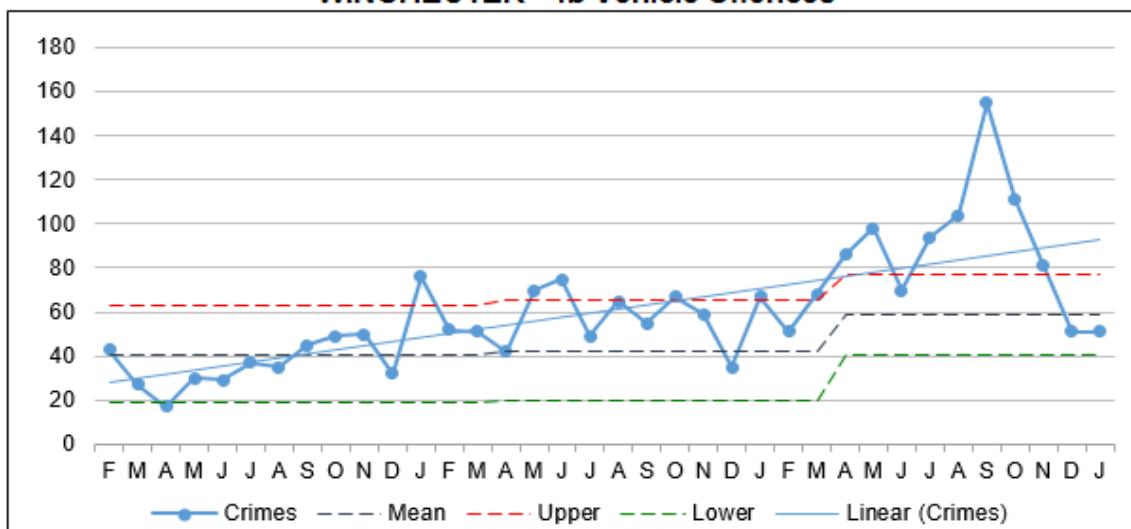
% Change (current - previous)		WINCHESTER CITY ↑	WINCHESTER GREATER ↑	WINCHESTER RURAL ↑	TOTAL
1 Violence Against the Person	↑	21.6%	4.6%	35.7%	18.1%
2 Sexual Offences	↑	25.9%	-35.1%	-5.4%	-0.4%
3 Robbery	↑	3.0%	-33.3%	0	-2.3%
4 Theft Offences	↑	31.8%	4.8%	36.9%	23.0%
5 Criminal Damage and Arson Offences	↑	-0.3%	-0.7%	-20.6%	-4.1%
6 Drug Offences	↑	20.8%	64.3%	-43.0%	-4.1%
7 Possession of Weapons Offences	↑	-11.5%	-62.5%	0	-25.5%
8 Public Order Offences	↑	21.0%	21.7%	35.8%	23.0%
9 Miscellaneous Crimes Against Society	↑	71.2%	81.5%	-44.0%	49.2%
<b>Total</b>		<b>23.7%</b>	<b>5.0%</b>	<b>18.0%</b>	<b>16.5%</b>

ASB callers by Neighbourhood - Rolling 12 months (This year v last year) (\*Beat = Ward\*)

WINCHESTER

Neighbourhood	Sector	R12 months	Previous R12 months	Difference	R12 % of whole
Winchester Central	Winchester City	620	678	-58	35.35%
Winchester North	Winchester City	235	183	52	13.40%
Denmead And Southwick	Winchester Greater	199	240	-41	11.35%
Bishops Waltham And Soberton	Winchester Greater	118	133	-15	6.73%
Winchester South	Winchester City	109	214	-105	6.21%
Wickham And Whiteley	Winchester Greater	106	134	-28	6.04%
Winchester Rural East	Winchester Rural	84	80	4	4.79%
Winchester Rural North	Winchester Rural	81	80	1	4.62%
Owslebury And Curbridge	Winchester Greater	80	84	-4	4.56%
Winchester Rural West	Winchester Rural	67	70	-3	3.82%
West Meon And Hambledon	Winchester Greater	42	66	-24	2.39%
Winchester Rural	Winchester Rural	12	9	3	0.68%
Winchester Greater	Winchester Greater	1	2	-1	0.06%
	Sum:	1,754	1,973	-219	-11.10%

WINCHESTER - 4b Vehicle Offences



WINCHESTER - 1c Violence without Injury

