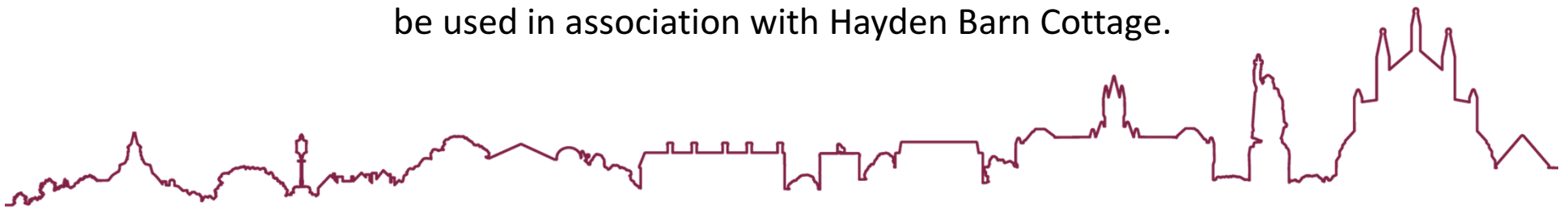


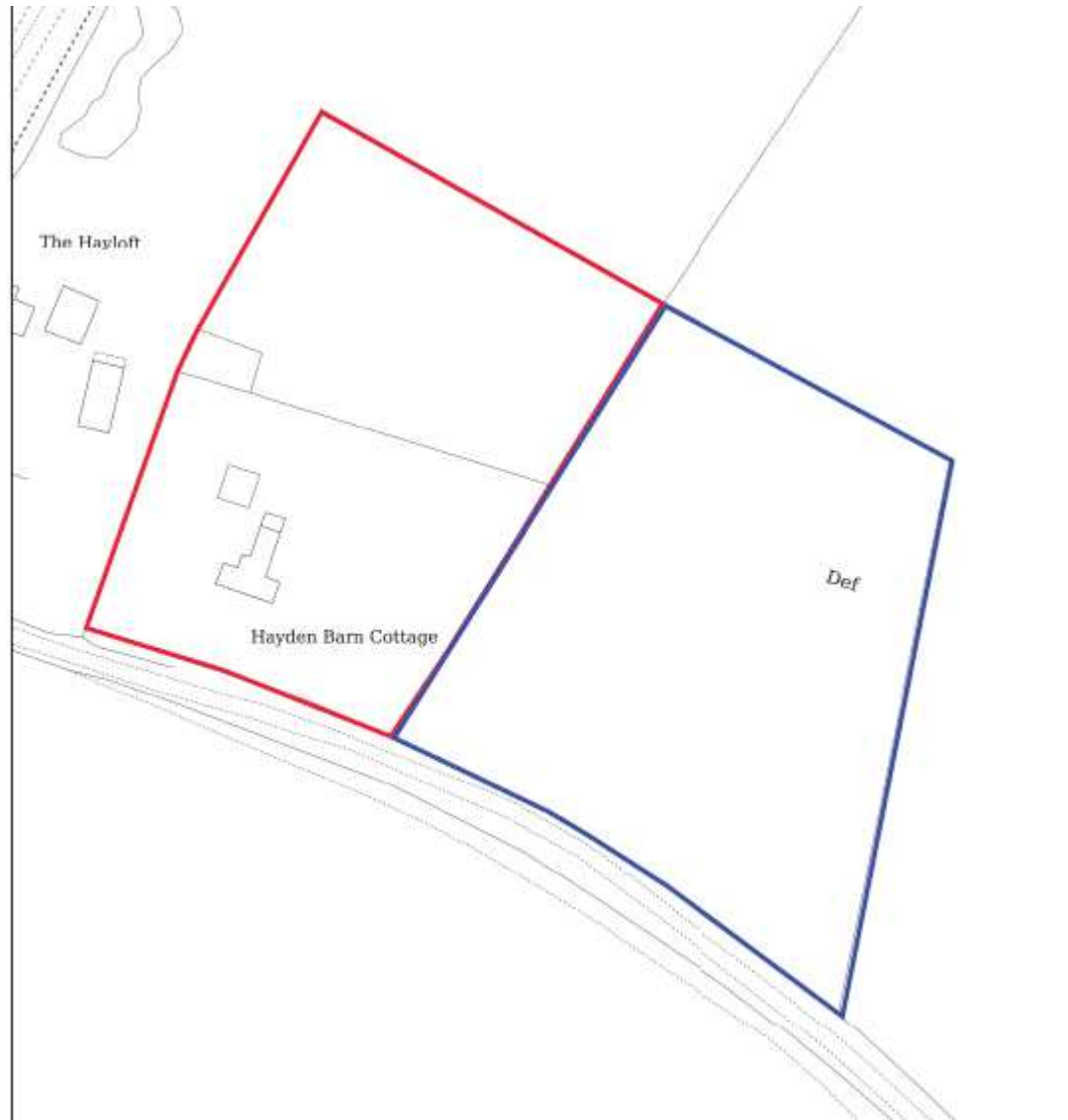
Hayden Barn Cottage, Hayden Lane, Warnford, SO32 3LF



(RETROSPECTIVE) Erection of private recreational stable to be used in association with Hayden Barn Cottage.



Location Plan and Land Ownership



Views from Hayden Lane



- ★ Location of the Stable
- ★ Location of the camera



Views from Hayden Lane



- ★ Location of the Stable
- ★ Location of the camera



Views looking in from neighbour's driveway entrance



- ★ Location of the Stable
- ★ Location of the camera



Views looking in from neighbour's driveway entrance



- ★ Location of the Stable
- ★ Location of the camera



Views from the Public Right of Way



- ★ Location of the Stable
- ★ Location of the camera



Views from the woodland area east of the site



- ★ Location of the Stable
- ★ Location of the camera



Views from the entrance of the paddock

Proposed Track



- ★ Location of the Stable
- ★ Location of the camera



Views from the proposed new location. Far north corner of the paddock.



- ★ Location of the Stable
- ★ Location of the camera



View from neighbour's swimming pool area



Boundary hedge cut down by overhead line maintenance worker.

- ★ Location of the Stable
- ★ Location of the camera



View from neighbour's garden



Boundary hedge cut down by overhead line maintenance worker.

- ★ Location of the Stable
- ★ Location of the camera



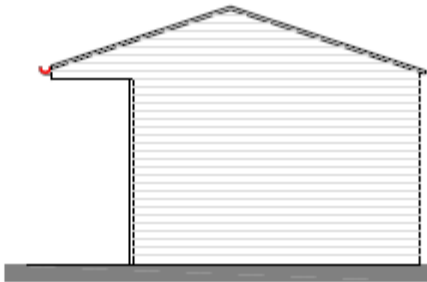
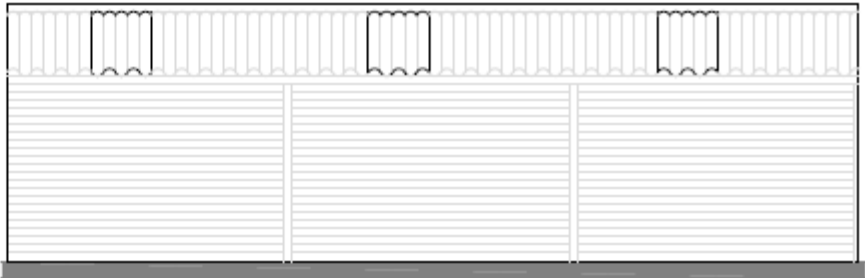
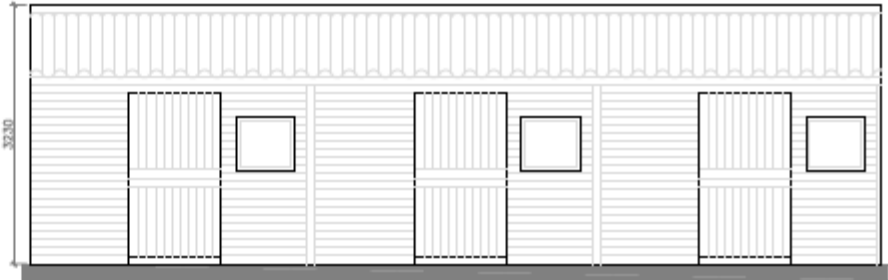
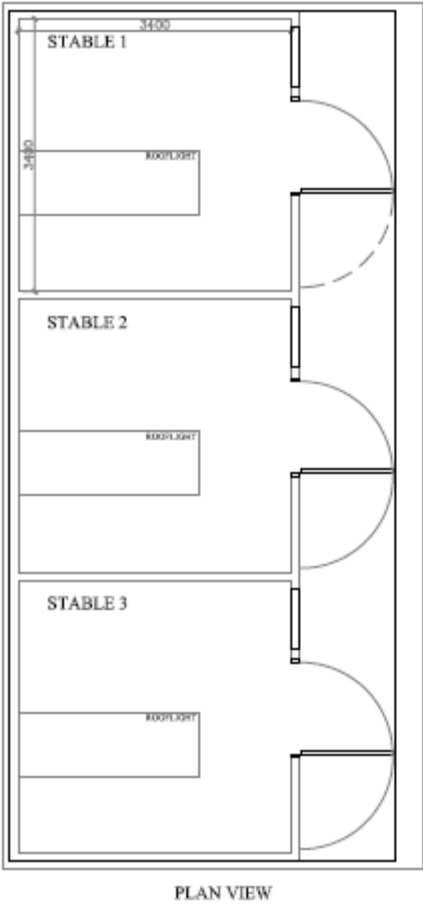
View from neighbour's land looking into the paddock.



- ★ Location of the Stable
- ★ Location of the camera



Plans



Approx.
10.2 meters Wide X
3.4 meters Deep X
3.2 meters High

PROPERTY: HAYDEN BARN COTTAGE
DRAWING TITLE: STABLES PLAN &
ELEVATIONS
SCALE: 1:50 @ A3
DATE: NOVEMBER 2019

Landscape height differences around the stable



Behind the Stable



The Stable Building



Proposed Block Plan

