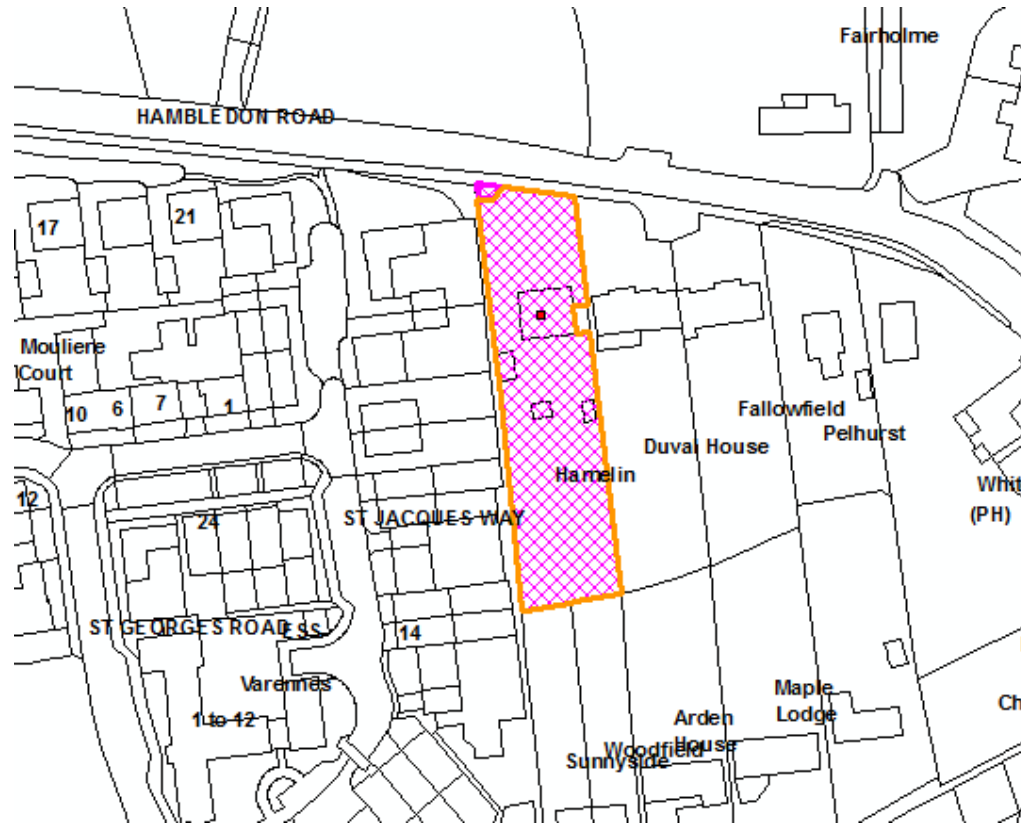
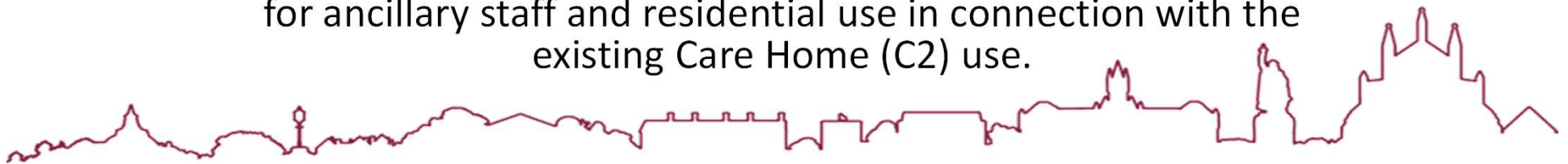


# 20/02104/FUL Hamelin Hambledon Road Denmead



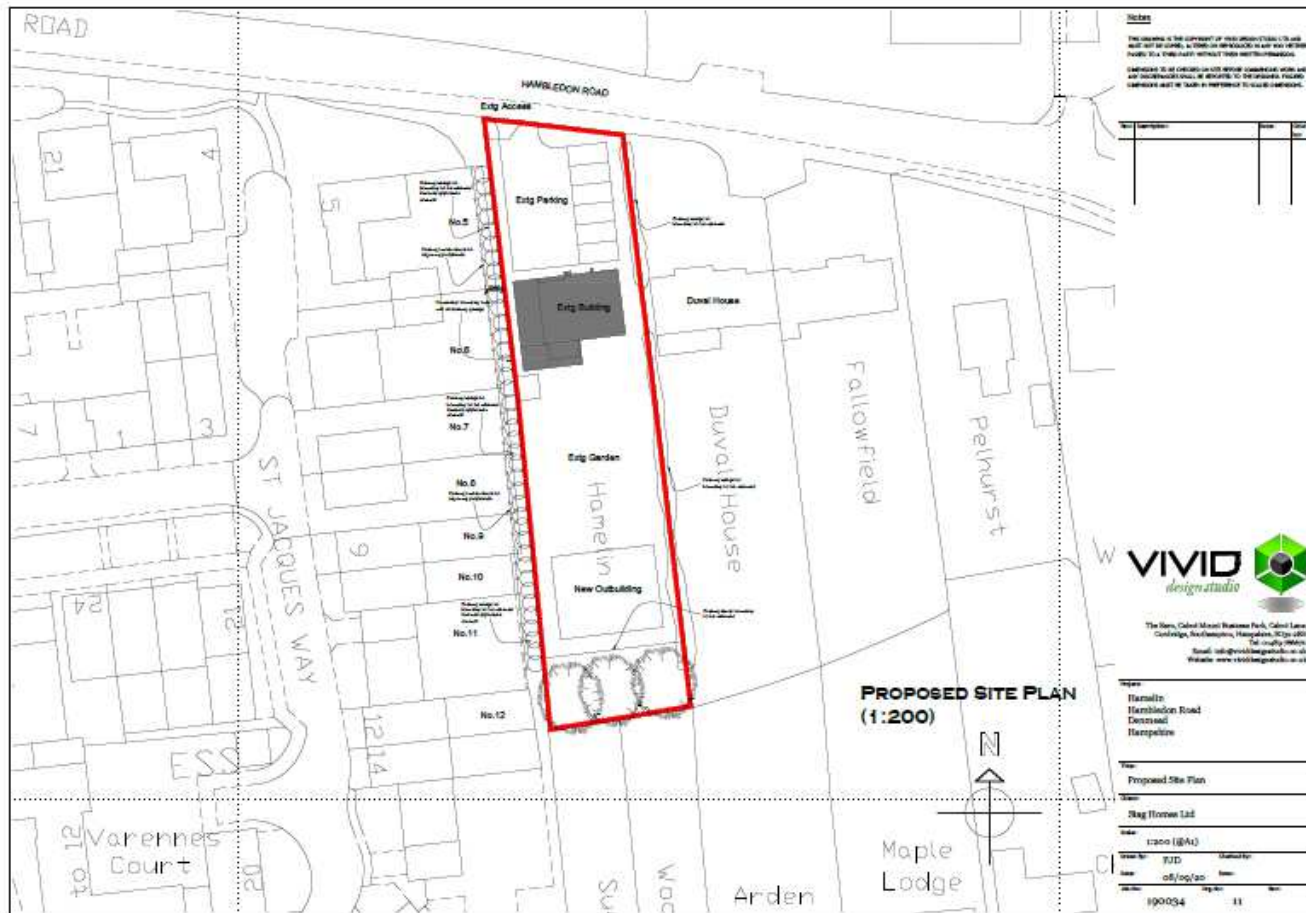
Retention of a single storey outbuilding within rear garden for ancillary staff and residential use in connection with the existing Care Home (C2) use.



# Proposal

- Retention of a single storey outbuilding within rear garden for ancillary staff accommodation use in connection with the existing residential young persons care home (C2) use.

# Block Plan



# Floor plans and elevations





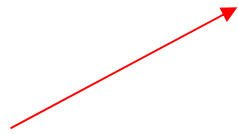
Enclosed private amenity space for the residential home. A fence separates the amenity space from the staff accommodation.



Pedestrian access  
to the staff  
accommodation  
from the front of  
the residential  
home

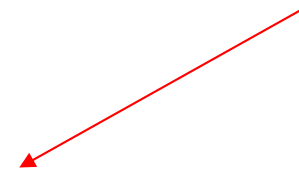


The outbuilding is set  
off the boundaries with  
the adjoining  
properties.





The staff accommodation as completed.





# **Recommendation**

**Application Permitted subject to condition(s)**