

21/02081/FUL – Tricklebank Stud, Lodge Hill, Newtown, PO17 6LG

General Purpose Storage Barn (Amended Plans)



LOCATION PLAN



AERIAL PHOTOGRAPH

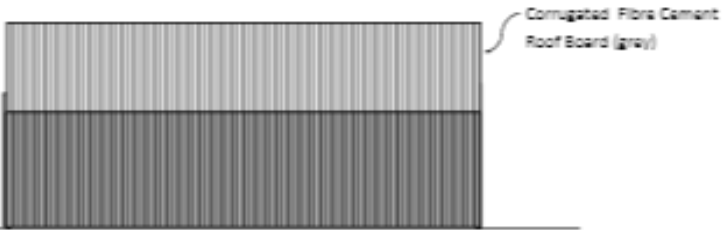


Boundary with the South Downs
National Park

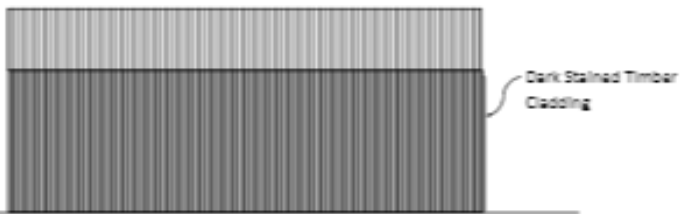
Position of proposed barn

PROPOSED ELEVATIONS

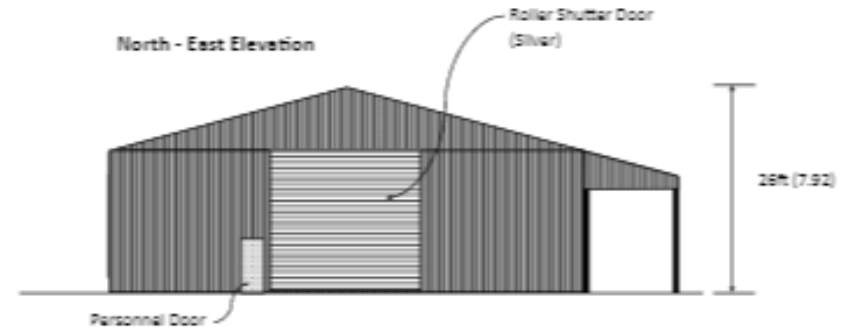
North - West Elevation



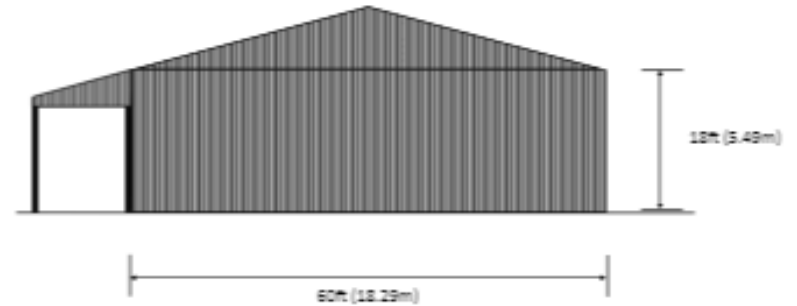
South - East Elevation



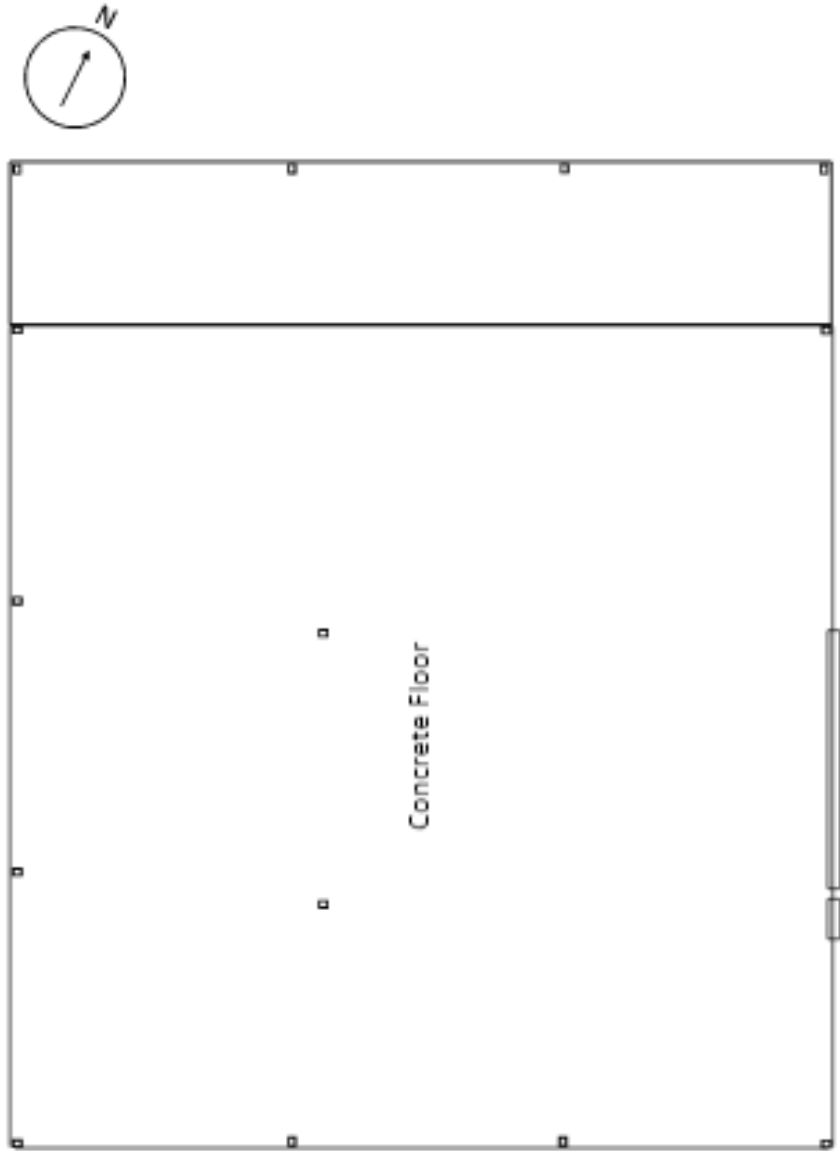
North - East Elevation



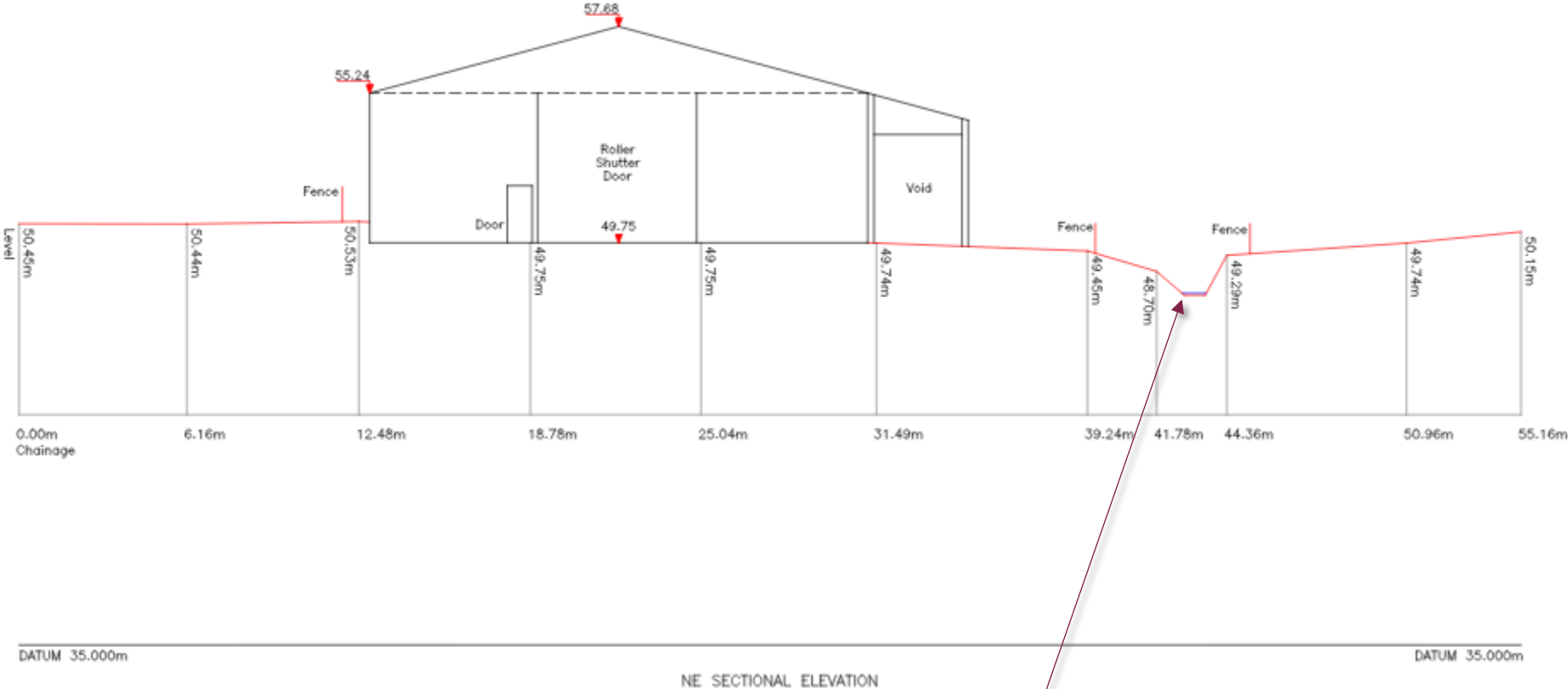
South - West Elevation



PROPOSED FLOOR PLAN



NORTH EASTERN SECTIONAL ELEVATION



Stream

SITE PHOTOGRAPH



Site of Proposed Barn from the South

Site Photograph



View within the site facing West

View from Boundary with the South Dows (West)



Position of barn



View from dwellings on Lodge Hill



Position of barn



View from Lodge Hill (South West)



Position of barn



View from access (South)



Long range view from South East



Site not visible

Site Photograph



View from Kiln Copse to the East

CONCLUSION

Recommendation: PERMIT