

Statement of Adrian Coombs Major Events Consultant

Experience and Expertise

- Exemplary police career from 1982 to 2012 with the Avon and Somerset Constabulary, the last 10 years served at the Superintendent and Chief Superintendent ranks, with direct responsibility for commanding major policing operations
- On retirement from the police service in 2012 formed my own major events consultancy business - Major Events Boss Limited
- For 10 years from 2012 until 2021 was the Operations & Security Director for the Glastonbury Festival with overall operational responsibility for the safe delivery of the 200,000+ capacity event
- Since 2013 have been the Event Consultant for Boomtown festival, leading it from 15,000 to a current operating capacity of 66,000, thus becoming the second highest attended independent festival in the UK (after Glastonbury), performing the festival phase role as the Boomtown Gold Commander when the site is open to the public
- I hold numerous event related qualifications and occasionally guest lecturer at universities, colleges and event forums.

Boomtown festival

In January 2013 I was requested by the founding and current directors of Boomtown to become their overall event consultant for the festival. So the last 12 years have been spent overseeing the development, growth, professionalisation and independence of the festival. This has been achieved within the spirit of positive partnership working with all the relevant agencies that form the Safety Advisory Group (SAG).

I have read the statement from the Boomtown Crime Manager (Kevin Instance) who is a former police colleague from the Avon and Somerset Constabulary with extensive experience. I can confirm and endorse his statement wholeheartedly.

The Boomtown festival that was held in August 2024 was no different to those of recent years. Of course each year there are bound to be various challenges because when a temporary green field site is operated this will always be the case, in particular with the British weather! But the key point is that this year the organisation was once again excellent, the SAG meetings always supportive and positive, plus all festival site operations were delivered to a high standard with nothing notable being brought to my attention at any stage regarding the delivery of the festival when judged according to the published Event Safety Management Plan (ESMP). I can confirm that the festival in 2024 was delivered to the same high standards as recent years, there was no relaxation from doing a professional job and was delivered by a very experienced and

competent festival event team. Indeed the SAG debrief meeting, with accompanying minutes, that was held on 19th August 2024 reflects this position.

It was with huge regret that the festival experienced the loss of a ticket holder and this tragic matter affected the event team greatly. At the time I recall asking both of the Police Silver Commanders if the festival could have done anything else to avoid this occurring and was clearly told that the event could have done no more in the face of a customer making a lifestyle and personal choice whilst on the festival site.

Whether in the planning, show delivery or debrief stages of a festival I always take time to seek feedback from SAG agencies, key contractors and suppliers, and festival freelance workers. Without exception all state that Boomtown is a very professional show, delivering best practice in the festival environment because it engages with companies and individuals at the top of their game - for example; the Crime Manager, the Drug Strategy Manager, TLC Welfare, Safeguarding staff, The Loop, Medical staff and facilities, and so on.

Over the period that I have been working with Boomtown there have been many formal visits by a variety of dignitaries. This includes an annual 'VIP Tour' carried out from 2013 to 2023 inclusive, the local MP on numerous solo visits over this time frame, plus on site meetings and visits with the Chief Constable and the Police Gold Commander from the Hampshire and the Isle of Wight Constabulary most years. In all cases everyone stated how satisfied they were with the organisation of the festival and how they were 'blown away' by the amazing creative experience created on the festival site.

Since the withdrawal of the police review application and subsequent adjournment of the determination in December 2024 I met with the Police Gold Commander, the Temporary Assistant Chief Constable for the Hampshire and the Isle of Wight Constabulary, earlier this month. Following such a meeting, it would not be appropriate for me to repeat all the details of those discussions here, particularly as the Constabulary no longer parties to these proceedings, but I was very reassured by this meeting and the positive discussions that took place. Fair and appropriate I think to say that the Constabulary remain both supportive of the event and the organisation, and have a willingness to work cooperatively and collaboratively going forward. Finally, I have and will always ensure that the positive working relationships are in place with the Constabulary at the highest levels, as indeed I have done here and for which I will continue to do so with all the SAGs agencies.

Conclusion

All of the Boomtown festival is managed and observed entirely transparently, in a close partnership working relationship with all the relevant agencies that form the SAG, including the Hampshire and the Isle of Wight Constabulary, particularly their senior commanders and specialist leads, who work both the planning of and delivery of the festival. All of whom, as far as I am aware, believe Boomtown to be doing an excellent job.

Under the Licensing Act 2003 all music festivals have an obligation to promote and maximise the four licensing objectives. Boomtown festival has always tried its best to achieve this and it is a summit where there will always be an aspirational distance to climb. Boomtown wishes to retain as much responsibility as possible for any issues that are or could be created by holding its annual festival. On behalf of Boomtown I request it is permitted to retain as much responsibility, ownership and accountability for managing its festival as possible. How this is achieved will remain in the ever evolving, annually reviewed, comprehensive, professional, robust and detailed ESMP which is the vehicle that can and will fully address all the eventualities presented to this licensing hearing.

Adrian Coombs
Boomtown Gold Commander
Major Events Boss Limited
17.01.25

Statement of Kevin Instance **Crime Manager at Boomtown Festival**

Experience

My name is Kevin Instance. I am the Crime Manager at Boomtown Festival. I have held this position between 2022 to 2024. Prior to this, I was employed at the festival as an Operational Bronze role. This role involved responding to incidents at the event that were escalated to a level beyond the capability of normal resources or where a specific management response was required.

In 2020 I was recruited as Crime Manager. This was a new role and reflected a commitment to not only focusing on drugs found in the possession of customers but to also to focus on organised criminals targeting the event. Also focused on other crime types such as violence against women and girls, thefts and assaults. The Crime Manager role was to work alongside the Drug Strategy Manager and to liaise very closely with the Intelligence and Investigations teams from Hampshire Police. Extensive planning was conducted for this role in 2020, but deployment was delayed until after the COVID years.

The experience that has led me to performing this role is based on a 30 year policing career and 9 years doing event safety management.

My last role in the police was as a Superintendent in Avon and Somerset Police leading the Specialist Operations Department. This role included leading covert and undercover policing, Counter Terrorism response and response to major incidents.

Since 2015, I have worked at music and sports events all over the UK in an event safety consultant and delivery capacity. I provide security and safety advice and deliver solutions at a range of events. My consultancy advice includes crime prevention, protective security, crowd management, health and safety, incident management and liaison with emergency services and other agencies in line with the Joint Emergency Service Interoperability Programme (JESIP).

The qualifications that I have that are relevant to providing event safety consultancy include a L6 qualification in Occupational Health and Safety and a L5 qualification in Crowd Safety Management. I am a Chartered Member of Institution of Occupational Safety and Health (CMIOSH) and am on the Occupational Safety and Health Consultants Register (OSHCR).

The Crime Manager Role at Boomtown

The role is to oversee and to advise on crime prevention, apprehend criminals that seek to cause harm to festival goers and to manage the scene of any significant crimes to be handed over to Hampshire Police. I work alongside the Drug Strategy Manager and his team of Drug Experts that are wholly focused on drugs.

The processes and facilities in place at the festival have been enhanced over time to improve the efficiency and pro activity of the crime prevention, detection and management. The planning and delivery of crime management is based upon the four

pillars of Prevent, Prepare, Protect and Pursue. Some the key activities within these areas include;

Prevent

- Boomtown has 6 campsite hubs. These hubs each consist of a campsite office, public facing info tent and a staffed observation tower. A dedicated campsite manager will oversee each campsite area, based from the campsite office. The public facing tent will be staffed 24 hours a day by people specially trained in dealing with victims from Safer Spaces, supported by both static and roaming security and stewards, working together as a campsite team to monitor activities in the campsites, offer assistance and support to the campsite users and help reduce the harms caused by illegal activity and anti-social behaviour.
- These hubs offer a multidisciplinary approach, acting as help and information points, initial first aid and welfare support, safeguarding escalation, and feedback to the Event Control room.
- Clear crime prevention advice particularly delivered by messaging throughout the site and in Boomtown communications prior to the festival.
- Continued use of the cashless payment system.
- A robust search regime and entry process on all gates
- Pre event police briefings and intelligence sharing with Hampshire Constabulary in line with the robust information sharing agreement.
- The Information Sharing Agreement is used to full effect in sharing live information and intelligence between Hampshire Constabulary and the Boomtown Crime and Drug Management team.
- Pre-event communications will continue to outline Boomtown's zero-tolerance approach to harassment and sexual violence, and encourage the reporting of crimes
- The Crime and Drugs desk in Event Control has a desk manager. This ensures that there is a permanent presence at this desk to improve the capture and development of information and to maintain communications with the other Event Control functions including Hampshire Police.
- A Detective Sergeant from Hampshire Police is co located with the Control Room Crime Desk to ensure that complete confidence is maintained that no information relevant to police investigations is missed or delayed.
- An electronic log of all crime and drug related incidents is managed by the Security Desk and the Crime and Drug Management team to enable accurate analysis of crime and drug issues for the current and future Boomtown festivals.
- Safer Spaces, Crime and Drugs Managers, Evictions Managers and Security managers are invited to attend twice daily police intelligence briefings.
- Table top exercising of reasonably foreseeable crime incidents. These exercises involve local authority, all emergency services, utility providers and all internal departments and teams.
- The Crime Manager works closely with the Boomtown Operations Director and Security Operations Manager, Security Companies and Security Control Desk to monitor crime reports and carry out appropriate investigations. They work

closely with the Security Operations team and, where necessary, the police, and agree an escalation process, and ensure a coordinated response from the festival regarding the deployment of Boomtown-employed low profile (covert) operatives, and the staging of any operations or interventions.

Protect

- Effective messaging on the approach to the festival, ahead of the entry process, highlighting the robust search regime and festival eviction policy.
- Messaging to encourage the reporting of all suspected incidents and things that “just don’t seem right”. Messages cascaded by the Boomtown App, through all front of house staff, the campsite villages and the information points.
- A “neighbourhood watch” approach by campsite hubs and staff encouraging people to look out for each other and report their suspicions.
- Effective staffing at all campsite hubs to encourage such reporting.
- QR coded wristbands to monitor people leaving and entering the site.
- Bespoke management training and cascaded briefings to all front of house staff regarding reporting procedures and actions in response to sexual assaults.
- “Believe” agenda promoted to all staff to ensure immediate investigation of crimes, particularly relating to sexual violence, harassment, and domestic abuse.
- The festival will increase its messaging in advance of the event and during the show to address both potential victims and perpetrators of harassment and sexual assault and continue to take guidance on this messaging from Safer Spaces
- Safer Spaces will provide a static team of workers in the campsite hubs and patrol teams in the arena who will deliver advice on general harm reduction as well as sexual harassment, Spiking and substance misuse.
- Victims of crime will be taken to a safe environment where support can be offered, and an account of their experience can be obtained.
- Corrosive substances “attack pack” at gates and campsite hubs to help mitigate any attack.
- High visibility security patrols.
- Crime and drug briefings given to Security and Steward Supervisors.
- The Safer Spaces area will have a confidential reporting cabin and 4 sleeping pods, which will be used to overnight victims of sexual violence. The Safer Spaces team has been increased for 2024 to allow greater scope for outreach teams and better resources to respond to anticipated further increases in reporting.
- In addition to the Campsite hubs, there are 2 Campsite Villages which will hold prominent space within Downtown and Hilltop campsites, and offer a chill-out stretch tent, bar, café, lockers, phone charging, and programmed workshop and healing spaces.

Prepare

- Crime Manager and Drug Strategy Manager role remains split to allow them to focus specifically on their identified areas.
- Close liaison between the Hampshire Police Crime Investigation team, Crime Manager and Safer Spaces lead in advance of the festival to ensure clear roles and responsibilities, communication and agreed procedures relating to the management of reports of serious crime, sexual assault and domestic violence.
- Permanent Security presence at the medical centre, who will also respond to incidents at Welfare at the request of Welfare staff.
- Routine patrols by campsite staff to identify potential victims of crime and in particular assault.
- Challenge 25 at entry gates and at all bars.
- Bar rules enforced to refuse alcohol to those already intoxicated.
- Crime Manager to coordinate the response to ongoing crime related incidents or respond to intelligence suggesting its likelihood.
- Security low-profile covert team to be managed and directed by the Crime Manager to proactively seek out potential crime and offenders and respond when it occurs.
- Pre-festival and on-site meetings between the Police, Boomtown Crime and Drugs Management and Security to exchange intelligence on known offenders attending this and earlier festivals.
- Local Resident's "hotline" to Event Control to report festival related incidents outside the event footprint and a Boomtown Security Community Impact Response Team to attend such incidents in liaison with Hampshire Police.

Pursue

- A highly skilled low profile (covert) team will be deployed across the site. They will be managed by the Crime Manager and will work predominantly on developed intelligence.
- The primary focus of the low-profile teams, and escalated security interventions, will be to identify, monitor and disrupt criminal activity that poses an immediate risk to the safety of festival attendees.
- Body worn cameras to be worn by security response teams to collect evidence at the scene of any incident and first accounts from both witnesses and victims.
- Evidence continuity training will be given to security and eviction staff by the Boomtown Crime and Drug Team.
- High visibility and plain clothed security patrols will be used across the site.
- A comprehensive CCTV system will be installed across the festival site with mobile PTZ cameras and static cameras. The primary focus of these cameras will be safety, but they will also be positioned to help prevent and detect crime. These cameras will be monitored in Event Control
- Analysis of the extensive CCTV system to help identify crime scenes and offenders.
- Drink spiking urine testing pots to be used by Safer Spaces to help identify offences of spiking at the earliest opportunity to aid investigation.

Conclusion

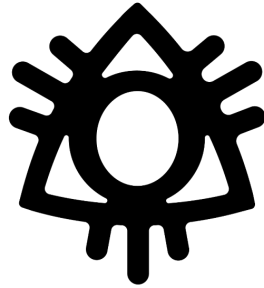
The purpose of this statement is to demonstrate the amount of measures that are in place to keep people safe from crime at Boomtown Festivals. These extensive measures have been held up to scrutiny through the Safety Advisory Group process and more directly from engagement with senior officers from Hampshire Constabulary. The police contacts have been the command team and also senior intelligence officers and investigators. The feedback we consistently get from these officers is that they are extremely confident in the relationships they have built with the Crime and Drugs team. The confidence they have in our team is reflected in the way they share intelligence and information.

Crime at the festival in the last 4 events has remained at a low level. There have been many significant criminals that have been apprehended and prosecuted as a direct result of the strong working relationships that our team and Hampshire Police have developed. Significant members of a drug dealing organised crime group were arrested and charged at the 2024 through complex work conducted by the Boomtown Crime team and Hampshire Police. These criminals were brought to justice that had been causing significant harm to the communities of Hampshire.

There is a huge amount of work highlighted here that goes into protecting people from the whole range of possible criminal acts whilst attending a festival.

I personally would not choose to work at this event if I didn't have complete confidence in the commitment to make it as safe as possible.

Kevin Instance CMIOSH, OSHCR



BOOMTOWN

CHAPTER 3: REVOLUTION OF IMAGINATION
7-11TH AUG 2024

EVENT MANAGEMENT PLAN

BOOMTOWN FAIR 2024

	Written By	Tess Wilson		
	First Published Date	4th April 2024		
V.2	Update By	Tess Wilson	Latest Update	06/07/24
V.X	Update By		Latest Update	
V.X	Update By		Latest Update	00/00/00
V.X	Update By		Latest Update	00/00/00

1. Introduction	11
1.1.1. Background	11
1.1.2. Event Overview	11
1.1.3. Capacity	11
1.1.4. History	11
1.1.5. Principle Management	11
1.1.6. Site and Arena Spaces	12
1.1.7. Tickets	12
1.1.8. Alcohol Sales	12
1.2. Event Management Plan	12
1.2.1. Objectives	12
1.2.2. Procedures	12
1.2.3. Covid-19	12
1.2.4. References	13
1.2.5. Grid Reference Plan	13
1.2.6. Updates to the EMP	13
1.2.7. Safety Advisory Group	13
1.2.8. Submissions and Updates	13
1.2.9. Confidentiality	13
1.3. Premises Licence	13
1.3.1. Sharing the Event Management Plan	13
1.3.2. Management of the Event	14
1.3.3. On-site Presence of PLH	14
1.3.4. Obligation	14
1.3.5. Licence Terms, Conditions and Objectives	14
1.4. Schedule Of Key Dates	14
2. Event Management Structure	14
2.1. Command and Control Structure	14
2.1.1. Operations Management Team	16
2.1.2. Operations Management Team Meetings	16
2.2. Emergency Liaison Team (ELT)	16
2.2.1. ELT Schedule	16
2.2.2. Attendance	16
2.2.3. Additional ELT's	16
2.2.4. Transfer of Authority	17
2.2.5. Transport Cell	17
2.3. Event Control	17
2.3.1. Event Controller	17
2.3.2. Live Communications Manager	17
2.3.3. Teams within Event Control	17
2.3.4. Management	18

2.3.5. Residents Hotline	18
2.4. Event Control Centre (ECC)	18
2.4.1. Emergency Calls	18
2.4.2. Alert Levels	18
2.5. Event Readiness Checklists	19
2.6. Briefing Notes	19
2.7. Arena Management	19
3. Accessibility	20
3.1. Personal Assistance	20
3.2. Facilities	20
4. Admission	21
4.1. Summary	21
4.1.1. Teen Tickets	21
4.1.2. ID Checks	21
4.1.3. Public Admission	21
4.1.4. Staff and Volunteers	21
4.1.5. Artists	21
4.1.6. Accessibility Guests	21
4.2. Ingress Plan	21
4.2.1. Gate Planning group	22
4.2.2. Other Teams	22
4.2.3. Crowd Management	22
4.3. Gates and Entrance Procedures	22
4.3.1. Public Tickets	22
4.3.2. Crew Tickets	22
4.4. Prohibited Items	23
4.4.1. Illegal Substances	23
4.5. Ticketing	23
4.6. Box Office	24
4.6.1. Infrastructure	24
4.6.2. Usage	24
4.6.3. Crew Passes	24
4.6.4. Operating Hours	24
4.7. Guest List	24
4.8. Wristbands	24
4.8.1. Back of House Wristbands	24
4.8.2. Warning Wristbands	25
4.9. Child Safeguarding	25
4.9.1. Age Restrictions	25
4.9.2. Associated Parent and Guardians	25
4.9.3. Challenge 25 Policy	25
4.10. ID Checks	25

5. Animals	26
5.1. Farm Animals	26
6. Audience Facilities	26
6.1. Lockers	26
6.2. Phone Charging	26
6.3. Cash Machines	26
6.4. Camping Equipment	27
7. Bars and Concessions	27
7.1.1. Bar Operators	27
7.1.2. Training	27
7.1.3. Alcohol Entrance Procedure	27
7.1.4. ID	27
7.1.5. Alcohol Sales	28
7.1.6. Designated Premises Supervisor	28
7.1.7. Tap Water	28
7.1.8. Total Bars	28
7.1.9. Glass	28
7.1.10. Breathalysers	28
7.2. Traders	28
7.3. Fairground Rides	29
8. Camping	29
8.1. General Camping	29
8.1.1. Opening Times	29
8.1.2. Live-In Vehicles	30
8.1.3. Campsite Villages	30
8.1.4. Campsite Help Points	30
8.1.5. Campsite Managers	30
8.1.6. Campsite Village Fires	30
8.2. Pre-pitched Tents	30
8.3. Camp Skylark	30
8.4. Camp Orchid	31
9. Cashless	31
10. Communications	32
10.1. Radios	32
10.1.1. Distribution	32
10.1.2. Quantities	32
10.1.3. Emergency Situations	32
10.1.4. Accessories	33
10.1.5. Radio Comms Security	33
10.2. Live Comms	33
10.2.1. Comms Management	33
10.3. Programmes and Boomtown App	33

10.4. Signs	33
10.5. Contacts	33
11. Crime and Security	34
11.1. Overview	34
11.1.1. Crime and Drug Management	34
11.1.2. Security Control Desk	34
11.1.3. Comms Cell and CDMP	34
11.2. Security and Stewarding Plan	35
11.2.1. Role Briefing	35
11.2.2. Primary Responsibilities	35
11.2.3. Staff Welfare	35
11.2.4. Oxfam Stewards	35
11.2.5. Festaff Stewards	35
11.2.6. MyCause Volunteers	35
11.2.7. Incident Management	36
11.3. Drugs	36
11.3.1. Prepare, Protect, Prevent, Pursue	36
11.3.2. Warnings	36
11.4. Amnesty Bins	36
11.4.1. Gates and Entry	36
11.4.2. Purpose	37
11.5. Evictions Process	37
11.5.1. Resourcing	37
11.5.2. Records	37
11.5.3. Purpose	37
11.6. Policing	37
12. Crowd Management	38
12.1. The Event Safety Shop (TESS)	38
12.2. Managing Crowds Safely	38
12.3. Operational Plans and RAG Document	38
12.4. Security Resources	38
13. Electricity and Lighting	39
13.1. Power	39
13.1.1. Management	39
13.1.2. Equipment	39
13.1.3. Protection and Infrastructure	39
13.2. Lighting	39
13.2.1. Documentation	39
14. Emergency Plans	40
14.1. Overview	40
14.1.1. Crowd Management	40
14.2. Stages	40

14.3. Emergency Comms	40
14.4. Alert Levels	40
14.5. Management of the Event Site	40
14.6. Emergency Services	40
14.7. Incident Plan	41
14.7.1. Major Incident	41
14.7.2. Emergency Services	41
14.7.3. Emergency Planning Site Plan	41
14.8. Emergency Access (incl. Rendez Vous Points (RVP))	42
14.8.1. Emergency Vehicles	42
14.8.2. Resources	42
14.9. Accident Procedures	42
14.9.1. Medical Team	42
14.9.2. Health and Safety Team	42
14.9.3. ELT	42
14.9.4. Build and Break Resource	42
14.10. RIDDOR Reporting	43
14.11. Cancellation of the Event	43
14.12. Extreme Weather	43
15. Entertainment	43
15.1. Artists	43
15.1.1. Accreditation	43
15.1.2. Parking and Camping	44
15.1.3. Management and Liaison	44
15.2. Street Venues	44
15.2.1. Management	44
15.2.2. Set Design	44
15.3. Pyrotechnics and Lasers	44
15.3.1. Fire Safety	44
15.3.2. Health and Safety	45
15.3.3. Special Effects	45
15.4. Outdoor Spectaculars	45
15.5. Gambling	45
16. Environmental Plan	45
16.1. Management	46
16.1.1. Sustainability Management	46
16.2. South Downs National Park (SDNP)	46
16.3. Initiatives	46
16.4. Eco Bonds	47
16.5. Family Facilities	47
16.5.1. Welfare	47
17. Fire Safety	48

17.1. Fire Management, Routes and Points	48
17.2. Fire Safety Management Plan	48
18. Health and Safety	49
18.1. Health and Safety Policy	49
18.1.1. Safety Inductions	49
18.2. RIDDOR	49
18.3. Hearing Protection	49
18.4. Risk Assessment	49
18.5. Food Hygiene	49
18.5.1. Standards	50
18.5.2. Trader Checklists	50
18.5.3. Inspection	50
18.6. Gas Safety	50
18.7. Contractors	50
18.8. Completion Certificate	50
18.8.1. Safety Sign-Off	51
18.8.2. Opening the Site to the Public	51
18.8.3. Structural Engineer	51
19. Information and Lost Property	51
19.1. Information Point	51
19.1.1. Opening Times	51
19.1.2. Purpose	51
19.1.3. Lost Property during the Event	51
19.2. Lost Property	52
19.2.1. Opening Times	52
19.2.2. Records	52
19.2.3. Reporting Items	52
19.2.4. Vehicles	52
20. Insurance	52
21. Local Community	52
21.1. Community Support Fund	52
21.2. Local Mailing List	53
21.3. Public Information Document	53
21.4. Newsletters	53
21.5. Residents Meetings	53
21.6. Local Publications	53
21.7. Local Outreach	53
21.8. Resident Hotline	53
21.9. Community Liaison	53
21.10. Additional Protection	54
21.11. Signage	54
21.12. Residents Tickets	54



22. Communication Marketing and PR	54
22.1. Marketing	54
22.2. Communication Strategy	54
22.3. Onsite internal Communications	55
22.4. Onsite public Communications	55
22.5. Emergency Situations	55
23. Medical and Welfare Provisions	55
23.1. Medical	55
23.1.1. Medical Manager	55
23.1.2. Medical Centre	55
23.1.3. South Central Triage Centre	56
23.1.4. Observation Pods	56
23.1.5. Isolation Tent	56
23.1.6. Vehicles	56
23.1.7. Resourcing and Staffing	56
23.1.8. Recording Keeping	56
23.1.9. Provision	56
23.1.10. Local Hospitals	56
23.1.11. Build and Break	56
23.2. Welfare	57
23.2.1. Welfare Centre	57
23.2.2. Safer Spaces	57
23.3. Child and Youth Welfare	57
23.3.1. Gates and Ingress	58
23.3.2. Teen Tickets	58
23.3.3. Entrance	58
23.3.4. Medical Attention	58
23.4. Mental Health	58
23.4.1. Acute mental Health Crisis	58
23.4.2. Safe Observation Pods	59
24. Noise Management	59
24.1. Noise Management Plan	59
24.2. Sound Management Log	59
24.3. Noise Monitoring Locations	59
24.4. Sound System Audit	60
24.5. Shutdown of Audio Systems	60
24.6. Propagation Tests	60
25. Operational and Opening Times	60
26. Site	61
26.1. Site Plans	61
26.2. Production Build Schedule	61
26.2.1. Management	61



26.2.2. Welfare	61
26.2.3. Communication and Incident Escalation	61
26.2.4. Contractors	61
26.2.5. Health and Safety	61
26.3. Barriers and Fencing	62
26.3.1. Perimeter Fence	62
26.3.2. Provisions	62
26.3.3. Contingency	62
26.3.4. Emergency Routes	62
26.4. Backstage	62
26.4.1. Emergency Access and Routes	62
26.5. Buildings and Structures	62
26.6. Catering	63
26.6.1. Build and Break Crew Catering	63
26.6.2. Show Day Provisions	63
26.6.3. Other Crew Caterers	63
26.7. Waste Management	63
26.7.1. Recycling	63
26.7.2. Traders	63
26.7.3. Leave no Trace	63
26.7.4. Servicing	64
26.8. Water Management	64
26.9. Sanitary Facilities	64
26.9.1. Ingress and Egress	64
26.9.2. Provision	64
27. Traffic Management	65
27.1. Transport Management Plan	65
27.1.1. External Traffic Management and Signage	65
27.1.2. Pedestrian Routes	65
27.1.3. Traffic Cell	65
27.1.4. Public Transport Hubs	65
27.2. Car Parks	65
27.2.1. Accessible Parking	65
27.2.2. Trader Parking	66
27.2.3. Campervans	66
27.3. Vehicle Passes	66
27.4. Internal Traffic Management	66
27.4.1. Routes	66
27.4.2. Green, Red, Amber, Arena	66
28. Venue	67
28.1. South Downs National Park	67
28.1.1. Planning Permission	67

28.1.2. Festival Impact	67
28.1.3. Promotion	67
28.2. South Downs National Park Diversion	67
28.2.1. Notices	67
28.2.2. Diversion Dates	68
28.3. Cheesefoot Head SSSI	68
28.3.1. Cheesefoot Head Car Park	68
29. Wednesday Opening	68
29.1. Ticketing	68
29.2. Gates	69
29.2.1. Opening Times	69
29.2.2. Searches	69
29.2.3. Evictions	69
29.2.4. Upgrades	69
29.3. Traffic	69
29.3.1. Traffic Management	69
29.3.2. Internal Traffic Management	69
29.3.3. Late Arrivals	70
29.3.4. Cars	70
29.3.5. Other Camping Tickets	70
29.3.6. Campervans	70
29.3.7. Private Hire Coaches	70
29.3.8. Train Station Shuttles	70
29.3.9. Coaches	70
29.3.10. Pick-up and Drop-off	70
29.4. Public Site Access	70
29.5. Campsites	71
29.5.1. Campsite Help Points and Management	71
29.5.2. Pre-pitched, Upgrade and Accessible Camping	71
29.6. Traders, Bars and Facilities	71
29.6.1. Public and Paid for Toilets and Facilities	71
29.6.2. Water Points	71
29.6.3. Lockers and Phone Charging	71
29.6.4. Bars	72
29.7. Artist Village	72
29.8. Entertainment and Sound Management	72
29.8.1. Entertainment	72
29.8.2. Sound Management	72
29.9. Medical and Welfare Provision	72
29.10. Event Management for Wednesday Opening	72
29.10.1. Event Control	72
29.10.2. Evictions	73



29.10.3. Crew and Volunteers	73
29.10.4. Waste Management	73
29.10.5. Amnesty Bins	73
29.10.6. Overnight Site Management	73

CONFIDENTIAL
Operational Document



BOOMTOWN LICENCE REVIEW 2024

COMMENTARY ON REPRESENTATIONS REGARDING NOISE

Project	Boomtown Licence Review 2024
To	Matthew Phipps, Partner, Head of Licensing England and Wales for TLT LLP
From	Robert Miller, Director, F1 Acoustics Company Limited
Date	18 November 2024
Reference	2016/RepsCommentaryNoise/Rev1

1 INTRODUCTION

F1 Acoustics Company Limited has been appointed by Boomtown Festival UK Ltd to provide commentary, with respect to noise, on the representations received from members of the public with regard to the Premises Licence Review being carried out by Winchester City Council in November 2024.

2 COMMENTARY ON REPRESENTATIONS

Table 2.1 shows the details of the representation received, an extract of any comments on noise and my commentary.

Table 2.1: Representations and Commentary

Rep ID	Extract of Representation Re Noise	F1 Acoustics Commentary
1. Sue Hardman 3 Raebarn Close, SO24 0QE	I would also like to make a representation about the Prevention of Public Nuisance. The amplified music noise from Boomtown travels for miles in all directions. It is unreasonable to allow music to continue until 4am in the morning just because the event is held in the countryside. This would never be allowed in an urban area and it is unreasonable to expect rural residents to put up with it. It is very difficult for the event organisers to control how far the sound travels as prevailing weather makes such a difference. The noise is audible within people's houses through closed double-glazed windows. The only way to guarantee that sound won't be audible in people's homes is if it has been turned off. My understanding is that comparable events such as Glastonbury do not allow music to be played after	The wind direction and speed does have a significant influence on where the music is audible in the surrounding area. We monitor all areas surrounding the event and manage the music noise level (MNL) to WCC limits set in the Premises Licence based on the loudest area. MP6 this year was in Markall Close, adjacent to Raebarn Close, no exceedances of the MNL limit recorded here in 2024. Some music was audible on Wednesday evening and rectified promptly. Glastonbury operates to the following times with significant large stages operating: Wed – 00:00 Thu – 03:00 Fri & Sat – 06:00 Sun – 05:00

	<p>midnight. If the licence is agreed the noise conditions must reflect those that would be agreed for an open air concert in an urban area. I think this would be a reasonable balance between the commercial requirements of the organisers and the rights of local residents to be able to enjoy the tranquillity of living in a National Park.</p>	<p>The two largest outdoor stages at Boomtown, Grand Central and Origin, operate a staggered closing on Friday and Saturday of 01:00 and 03:00, respectively.</p>
<p>2. Michael J Beer 1 Hockley Cottages Cheriton Hampshire SO24 0NU</p>	<p>I would also like to make a representation about another of the Licensing Objectives – the Prevention of Public Nuisance. The amplified music noise from Boomtown travels for miles in all directions. On Wednesdays it is supposed to be inaudible. On Thursdays and Sundays it is supposed to finish at midnight. On Fridays and Saturdays it is allowed to continue until 4.00 am the next morning which I think is unreasonable as it causes nuisance to local residents, including myself when I am indoors trying to sleep. If the licence is not revoked, please can it be amended so that amplified music is not allowed after 11.00 pm or, at worst, midnight on all nights? I think this would be a reasonable balance between the commercial requirements of the organisers and the rights of local residents to be able to enjoy the tranquillity of living in a National Park</p> <p>...</p> <p>I do not consider that the Boomtown music festival does not promote the Prevention of Public Nuisance, which is one of the four licensing objectives? In particular, the low frequency bass noise travels miles from its source and it causes me and my wife considerable nuisance as it continues until 4.00 am on two nights and until midnight on two other nights. Living in a part of the South Downs National Park which</p>	<p>The wind direction and speed does have a significant influence on where the music is audible in the surrounding area. We monitor all areas surrounding the event and manage the MNL to WCC limits set in the Premises Licence based on the loudest area.</p> <p>MP6 and MP7 are the closest monitoring locations to this complaint and no exceedances of the MNL limit recorded here in 2024. Including a complaint received on Saturday night (Sunday morning) at 02:41 and investigated.</p>

	<p>enjoys very low ambient noise levels during the night at all other times of the year this is extremely annoying and I would like to request that, if the licence is allowed to continue, it should be amended such that amplified music ceases at either 11.00 pm or midnight on all nights.</p>	
<p>3. Cheriton Parish Council</p>	<p>...the parish council requests that it takes this opportunity (the first since 2019) to curtail the level of disturbance to achieve the licensing objective of the Prevention of Public Nuisance. Noise nuisance has been caused to residents in our parish during Boomtown music festivals for several years by amplified live and recorded music. This is allowed by the current premises licence to take place until midnight on Thursday and Sunday but, worse, it is allowed until 4.00 am on Friday night/Saturday morning and on Saturday night/Sunday morning. Residents in their own homes with all windows closed and the benefit of double glazing have been prevented from getting to sleep or have even been woken up during the night, particularly by low frequency bass noise which travels for miles.</p> <p>[The representation goes on to discuss noise monitoring they commissioned this year and about tranquillity.]</p>	<p>The wind direction and speed does have a significant influence on where the music is audible in the surrounding area. We monitor all areas surrounding the event and manage the MNL to WCC limits set in the Premises Licence based on the loudest area.</p> <p>MP6 (Cheriton) this year was in Markall Close, no exceedances of the MNL limit recorded here in 2024. Some music was audible on Wednesday evening but rectified to the satisfaction of WCC promptly.</p> <p>I have not seen the report mentioned and therefore cannot comment on the sound level data being referred to. The concept they discuss of the perception of the sound level (L_{Ap}) doubling every 10 dB is correct. However, the context or statistical significance of the 18 dB referred to is not explained. Is it a 90th percentile (L_{AF90,T})? Energetical average over a time period (L_{Aeq,T})? Or minimum (L_{AFmin,T})? Did it occur regularly or was it once a night? Without further information it is not possible to know how contextually relevant the sound level presented is.</p> <p>Tranquillity is not just about noise levels but many other factors including character and context, it also includes visual metrics. Yes, the area has a low background sound level but we are operating to MNL limits set by WCC that should protect the majority of local residents to excessive noise disturbance (this does not mean inaudibility in the absolute sense).</p>

<p>4. Elizabeth Anne Newson Fir Tree Cottage Bramdean SO24 0JW</p>	<p>I wish to make the following points regarding the Prevention of Public Nuisance:</p> <ul style="list-style-type: none"> residents are bothered by the continuous deep thud of the bass music until 4 a.m. on two nights of the Festival; this is totally unacceptable. I live approximately six miles from the site and I can hear the thudding of the music quite distinctly. Base line readings of this blessedly peaceful environment, particularly night time readings, should be taken professionally with microphones positioned at the correct height and away from undulating land that may give a false reading. The level of sound at nighttime in this area is very, very low; almost silent. To then have deep base music thudding until the early hours is an absolute desecration of the tranquillity of the SDNP and constitutes a public nuisance. 	<p>We monitor all areas surrounding the event and manage the MNL to WCC limits set in the Premises Licence based on the loudest area.</p> <p>MP6 (Cheriton) is the closest monitoring position to Bramdean, no exceedances of the MNL limit were recorded here in 2024.</p> <p>Yes, the area has a low background sound level but we are operating to MNL limits set by WCC that should protect the majority of local residents to excessive noise disturbance (this does not mean inaudibility in the absolute sense).</p>
<p>5. David Pain Godwins Cottage Cheriton Alresford SO24 0PY</p>	<p>I live in an area of intermediate to high tranquillity according to the Tranquillity Scores Map in this Local Plan and the ambient noise level at bedroom height at the rear of my house has been professionally measured recently at 18dB after 11.00 pm at night.</p> <p>Therefore, it is particularly quiet after 11.00 pm where I live – in fact, almost silent apart from the occasional hooting by owls and the chiming of the church clock. However, during the Boomtown festival the music noise is supposed to be inaudible on the Wednesday, continues until midnight on the Thursday and Sunday, and continues until 4.00 am on the Friday and Saturday nights. This causes nuisance to me as, even with my double-glazed bedroom windows shut, I am either prevented from</p>	<p>I have not seen the report mentioned and therefore cannot comment on the sound level data being referred to. The concept they discuss of the perception of the sound level (L_{Ap}) doubling every 10 dB is correct. However, the context or statistical significance of the 18 dB referred to is not explained. Is it a 90th percentile ($L_{AF90,T}$)? Energetical average over a time period ($L_{Aeq,T}$)? Or minimum ($L_{AFmin,T}$)? Did it occur regularly or was it once a night? Without further information it is not possible to know how contextually relevant the sound level presented is.</p> <p>MP6 (Cheriton) this year was in Markall Close, no exceedances of the MNL limit recorded here in 2024. Some music was audible on Wednesday evening but rectified to the satisfaction of WCC promptly.</p>

	<p>getting to sleep or even awoken during the night particularly by the low-frequency bass noise. I do not consider that the noise should be permitted to continue so late at night. One of my grand-daughters attended the Glastonbury Festival this year and the main stages closed at midnight in deference to local residents and that location is not even in a National Park! I can see no reason why residents in the rural parts of Winchester District should be expected to suffer noise nuisance so late at night as this undermines the Licensing Objective “Prevention of Public Nuisance”. If the licence is allowed to continue I request that the noise conditions are amended so that amplified live and recorded music ceases at either 11.00 pm or midnight on all nights.</p>	<p>Glastonbury operates to the following times with significant large stages operating (we work at Glastonbury): Wed – 00:00 Thu – 03:00 Fri & Sat – 06:00 Sun – 05:00</p> <p>The two largest outdoor stages at Boomtown, Grand Central and Origin, operate a staggered closing on Friday and Saturday of 01:00 and 03:00, respectively.</p>
<p>6. David Templeman Turnpike Cottage Hinton Ampner SO24 0JT</p>	<p>I have enjoyed the dark skies, peace and tranquillity of our National Park and its unique flora and fauna with its very low ambient noise levels during those dark night except when noisy events are held at Cheesefoot Head. The Boomtown music festival in particular is one such event which does not promote the Prevention of Public Nuisance: one of the four licensing objectives. Take the low frequency bass noise which travels miles from its source and causes both me and my wife considerable nuisance as it continues until 4.00 am on two nights and until midnight on two other nights. The current situation is both intolerable and very annoying and I most urgently urge that, if the licence is allowed to continue, it should be amended such that amplified music ceases at either 11.00 pm or midnight on all nights. It must be continuously measured and recorded in my direct vicinity as well as nearby in Bramdean by calibrated instruments, by qualified</p>	<p>MP6 (Cheriton) is the closest monitoring position to Bramdean, no exceedances of the MNL limit were recorded here in 2024.</p> <p>In 2024 we did carry out investigative noise monitoring in Hinton Ampner to try to establish if there was a significant difference to the MNL measured in Cheriton as requested by a resident. The findings were (put simply) that there was a variation in noise levels at different times, as would be expected along slightly different compass bearings from the site with variation in wind speed and direction but the MNL were not significantly higher in Hinton Ampner compared to the highest MNL measured in Cheriton.</p> <p>Further noise monitoring in the Hinton Ampner and Bramdean direction is being considered for future years.</p> <p>We use calibrated sound level measurement instrumentation, we are qualified independent experts and a</p>

	<p>independent experts who determine an agreed baseline and whose resources and expenses are fully funded by Boomtown.</p>	<p>WCC noise team also take measurements during the event. Yes, the area has a low background sound level but we are operating to MNL limits set by WCC that should protect the majority of local residents to excessive noise disturbance (this does not mean inaudibility in the absolute sense).</p>
<p>7. John Silvester Green Pastures Alresford Road Winchester SO21 1HL</p>	<p>I would also like to make several representations about another of the Licensing Objectives, namely the Prevention of Public Nuisance. Firstly, noise. A National Park is supposed to be a place of peace and tranquillity. On the Wednesday the amplified music is supposed to be inaudible at the perimeter of the site, but isn't. On the Thursday and Sunday it is supposed to stop at midnight but on the Friday and Saturday it is allowed to go on until 4 am. This is wholly unreasonable and a nuisance to local residents, as it prevents sleep, even with all windows closed, not ideal on a hot summer night. If the licence is not revoked, I request that it be amended so that amplified music ceases at 11 pm on all nights. Since it starts at 10 am this still allows 13 hours of music each day, which ought to be enough to satisfy the Boomtown customers.</p>	<p>On Wednesday the music should be inaudible at the monitoring positions which are further away than this property, hence why it is audible here. There is not a closer noise monitoring position along the A31 owing to the road traffic noise being dominant and it being difficult to take a representative measurement of the music noise. All monitoring positions are agreed with WCC.</p> <p>Yes, the area has a low background sound level but we are operating to MNL limits set by WCC that should protect the majority of local residents to excessive noise disturbance (this does not mean inaudibility in the absolute sense).</p>
<p>8. Graham Tarbuck Orchard View Kilmeston Road Cheriton SO24 0NJ</p>	<p>Noise from the Boomtown Music Festival is without doubt causing an annual public nuisance specifically on the two nights it continues after 11pm and even worse on the two nights it transmits until 4.00am. The bass noises are totally at odds with the proclaimed aspect of "Tranquillity" within the National Park which is given much prominence in SDNP literature and there appears a reluctance for anyone to take action - Licensing,</p>	<p>Yes, the area has a low background sound level but we are operating to MNL limits set by WCC that should protect the majority of local residents to excessive noise disturbance (this does not mean inaudibility in the absolute sense).</p>

	<p>SDNP, or Boomtown in the "prevention or Public nuisance" .</p> <p>The prevention of public nuisance is a corner-stone of Licensing and an ongoing cause for concern for National Park residents.</p>	
<p>9. Simon Scott Burnt Platt Cheriton Hampshire SO24 0PY</p>	<p>I would also like to make a representation about another of the Licensing Objectives – the Prevention of Public Nuisance. The amplified music noise from Boomtown travels for miles in all directions. On Wednesdays it is supposed to be inaudible. On Thursdays and Sundays it is supposed to finish at midnight. On Fridays and Saturdays it is allowed to continue until 4.00 am the next morning which I think is unreasonable as it causes nuisance to local residents. If the licence is not revoked, please can it be amended so that amplified music is not allowed after midnight on all nights? I think this would be a reasonable balance between the commercial requirements of the organisers and the rights of local residents to be able to enjoy the tranquillity of living in a National Park.</p>	<p>MP6 (Cheriton) this year was in Markall Close, no exceedances of the MNL limit recorded here in 2024. Some music was audible on Wednesday evening but rectified to the satisfaction of WCC promptly.</p> <p>The wind direction and speed does have a significant influence on where the music is audible in the surrounding area. We monitor all areas surrounding the event and manage the MNL to WCC limits set in the Premises Licence based on the loudest area.</p> <p>Yes, the area has a low background sound level but we are operating to MNL limits set by WCC that should protect the majority of local residents to excessive noise disturbance (this does not mean inaudibility in the absolute sense).</p>
<p>10. Martyn and Rosslyn Curwen-Bryant 4 Hockley Cottages Cheriton SO24 0NU</p>	<p>We would also like to make a representation about another of the Licensing Objectives – the Prevention of Public Nuisance. The amplified music noise from Boomtown travels for miles in all directions. On Wednesdays it is supposed to be inaudible. On Thursdays and Sundays it is supposed to finish at midnight. On Fridays and Saturdays it is allowed to continue until 4.00 am the next morning which we consider unreasonable as it causes nuisance to local residents, including ourselves. Even Glastonbury, a global event, closes its main stages at midnight. Our property is one of</p>	<p>The wind direction and speed does have a significant influence on where the music is audible in the surrounding area. We monitor all areas surrounding the event and manage the MNL to WCC limits set in the Premises Licence based on the loudest area.</p> <p>MP6 and MP7 are the closest monitoring locations to this representation and no exceedances of the MNL limit recorded here in 2024. Including a complaint received on Saturday night (Sunday morning) at 02:41 and investigated.</p>

	<p>the closest to the festival site. If the licence is not revoked, please can it be amended so that amplified live and recorded music is not permitted after 11.00 pm or, at worst, midnight on all nights? We consider this to offer a reasonable balance between the commercial requirements of the organisers and the rights of local residents to be able to enjoy the tranquillity of the South Downs National Park which rights, at present, appear to have been subordinated to those of Boomtown.</p>	<p>Glastonbury operates to the following times with significant large stages operating (we work at Glastonbury): Wed – 00:00 Thu – 03:00 Fri & Sat – 06:00 Sun – 05:00</p> <p>The two largest outdoor stages at Boomtown, Grand Central and Origin, operate a staggered closing on Friday and Saturday of 01:00 and 03:00, respectively.</p> <p>Yes, the area has a low background sound level but we are operating to MNL limits set by WCC that should protect the majority of local residents to excessive noise disturbance (this does not mean inaudibility in the absolute sense).</p>
<p>11. Michael Curtis Gastons Kilmeston nr. Alresford Hampshire SO24 ONL</p>	<p>I would like to make a representation about one of the Licensing Objectives – the Prevention of Public Nuisance. The amplified music noise from Boomtown travels for miles in all directions. On Wednesdays it is supposed to be inaudible. On Thursdays and Sundays it is supposed to finish at midnight. On Fridays and Saturdays it is allowed to continue until 4.00 am the next morning which I think is unreasonable as it causes nuisance to local residents, including myself when I am indoors trying to sleep. If the licence is not revoked, please can it be amended so that amplified music is not allowed after 11.00 pm or, at worst, midnight on all nights? I think this would be a reasonable balance between the commercial requirements of the organisers and the rights of local residents to be able to enjoy the tranquillity of living in a National Park.</p>	<p>The wind direction and speed does have a significant influence on where the music is audible in the surrounding area. We monitor all areas surrounding the event and manage the MNL to WCC limits set in the Premises Licence based on the loudest area.</p> <p>MP6 and MP7 are the closest monitoring locations to Kilmeston and no exceedances of the MNL limit were recorded here in 2024.</p> <p>Yes, the area has a low background sound level but we are operating to MNL limits set by WCC that should protect the majority of local residents to excessive noise disturbance (this does not mean inaudibility in the absolute sense).</p>

<p>12. Yew Tree Farmhouse Beauworth Near Alresford Hants SO24 0NZ</p>	<p>During the performance the public nuisance is the nighttime noise.</p>	<p>We monitor all areas surrounding the event and manage the MNL to WCC limits set in the Premises Licence based on the loudest area.</p> <p>MP6 and MP7 are the closest monitoring locations to Beauworth and no exceedances of the MNL limit were recorded here in 2024.</p>
<p>13. Frances Warwick Meadow Cottage Cheriton Alresford SO24 0PP</p>	<p>I would also like to make a representation about another of the Licensing Objectives – the Prevention of Public Nuisance.</p> <p>I do not consider that the Boomtown music festival does not promote the Prevention of Public Nuisance, which is one of the four licensing objectives. In particular, the low frequency bass noise travels miles from its source and it causes me and my husband considerable nuisance as it continues until 4.00 am on two nights and until midnight on two other nights. Living in a part of the South Downs National Park which enjoys very low ambient noise levels during the night at all other times of the year this is very annoying and you would like to request that, if the licence is allowed to continue, it should be amended such that amplified music ceases at either 11.00 pm or midnight on all nights.</p>	<p>The wind direction and speed does have a significant influence on where the music is audible in the surrounding area. We monitor all areas surrounding the event and manage the MNL to WCC limits set in the Premises Licence based on the loudest area.</p> <p>MP6 (Cheriton) this year was in Markall Close, no exceedances of the MNL limit recorded here in 2024. Some music was audible on Wednesday evening but rectified to the satisfaction of WCC promptly.</p> <p>Yes, the area has a low background sound level but we are operating to MNL limits set by WCC that should protect the majority of local residents to excessive noise disturbance (this does not mean inaudibility in the absolute sense).</p>
<p>14. Anthony McWhirter Sevington Manor Tichborne Alresford SO24 0NF</p>	<p>I would also like to make a representation about the licensing objective “The Prevention of Public Nuisance”. The noise from Boomtown can be heard over long distances although this does depend on things like wind speed and direction. The prevailing wind tends to be westerly or south westerly and we have certainly heard the sound from our house during the day and during the evening. As the music is currently permitted to continue until 4.00am in the morning on two nights</p>	<p>The wind direction and speed does have a significant influence on where the music is audible in the surrounding area. We monitor all areas surrounding the event and manage the MNL to WCC limits set in the Premises Licence based on the loudest area.</p> <p>MP5 is in Tichborne, no exceedances of the MNL limit recorded here in 2024. Some music was audible on Wednesday evening but rectified promptly.</p>

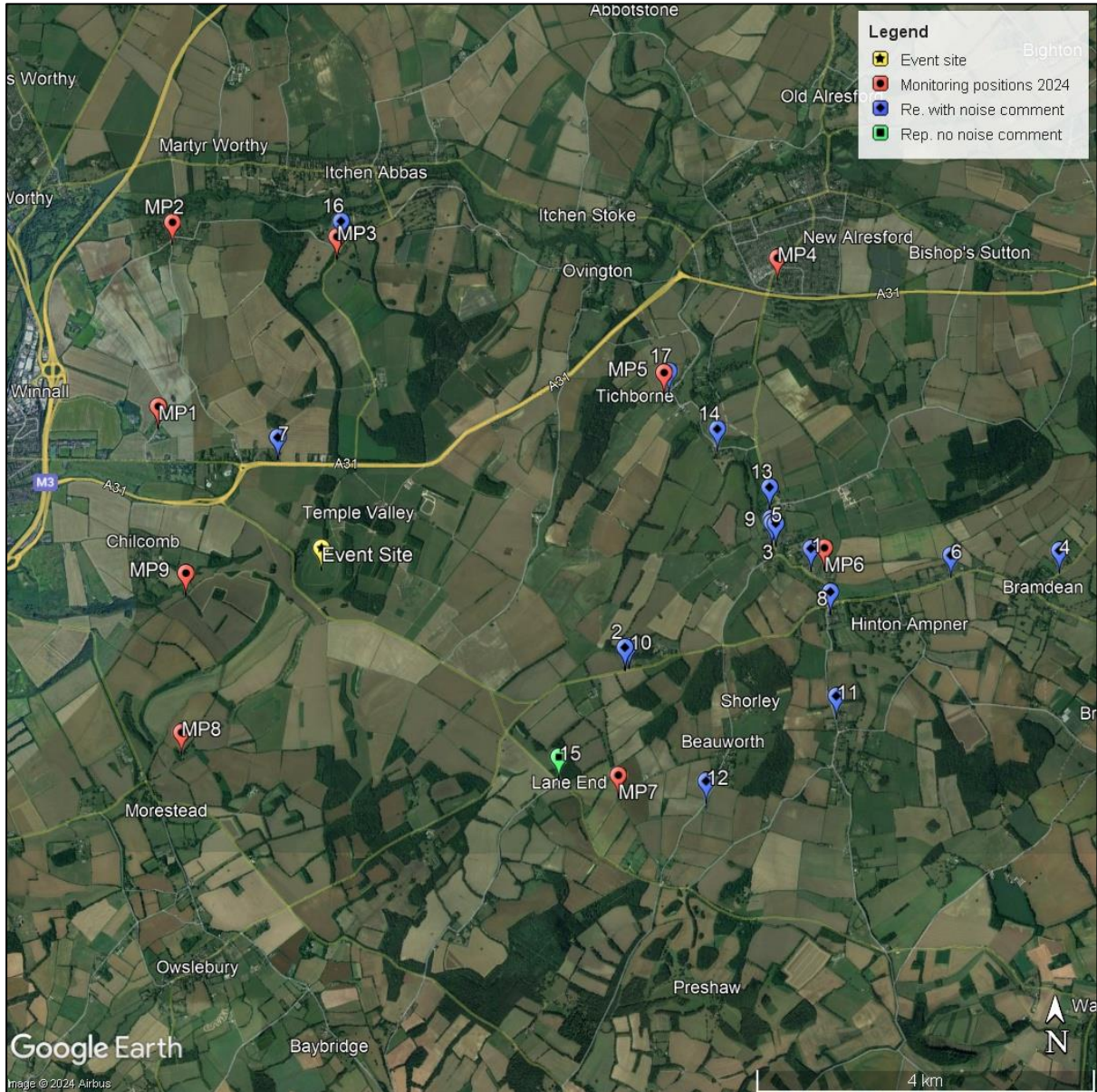
	<p>this is a real interference with our ability to enjoy our house. Therefore, to provide a better balance between those who live in the area and those who attend the event, I suggest further restricting the nighttime hours during which music can be played to ,say, midnight or 2.00am and /or restricting the permitted noise level after, say, midnight or 1.00pm. I cannot believe that it is really necessary for such high levels of noise to carry on until 4.00am in the morning.</p>	
<p>15. Terence Jones Longwood View Lane End Owslebury Winchester SO21 1JZ</p>	<p>[No comments on noise.]</p>	<p>[No comments on noise.]</p>
<p>16. Alison Matthews Lake House Avington</p>	<p>I understand that prevention of public nuisance is one of the Licensing Objectives. Residents of Avington, as I am, suffer considerable nuisance for a week every summer when the whole area is disrupted by the noise and the strobe lighting with resulting loss of sleep.</p>	<p>No specific noise concerns mentioned.</p> <p>MP3 is in Avington, minor exceedances of the MNL occurred on the Thursday evening in 2024 but were heavily influenced by the strong wind gusts that affected the measurements. On Friday and Saturday nights there were no exceedances of the MNL limits. On Sunday the wind was from the south in the late evening and the MNL limit was exceeded between approximately 23:30 and 00:00.</p>
<p>17. Tichborne Parish Council</p>	<p>If the Sub-committee is not minded to revoke or suspend the existing premises licence then we would ask it to consider curtailing the level of disturbance to achieve the licensing objective of the Prevention of Public Nuisance.</p> <p>Most of our parish is in the South Downs National Park and one of the special qualities of the National Park is “relative tranquillity”.</p>	<p>MP5 is in Tichborne, no exceedances of the MNL limit recorded here in 2024. Some music was audible on Wednesday evening but rectified promptly.</p> <p>Tranquillity is not just about noise levels but many other factors including character and context, it also includes visual metrics. Yes, the area has a low background sound level but we are operating to MNL limits set by WCC that should protect the majority of local residents to excessive noise</p>

		disturbance (this does not mean inaudibility in the absolute sense).
--	--	--

3 LOCATIONS OF REPRESENTATIONS

Figure 3.1 shows a plan of the locations of the representations.

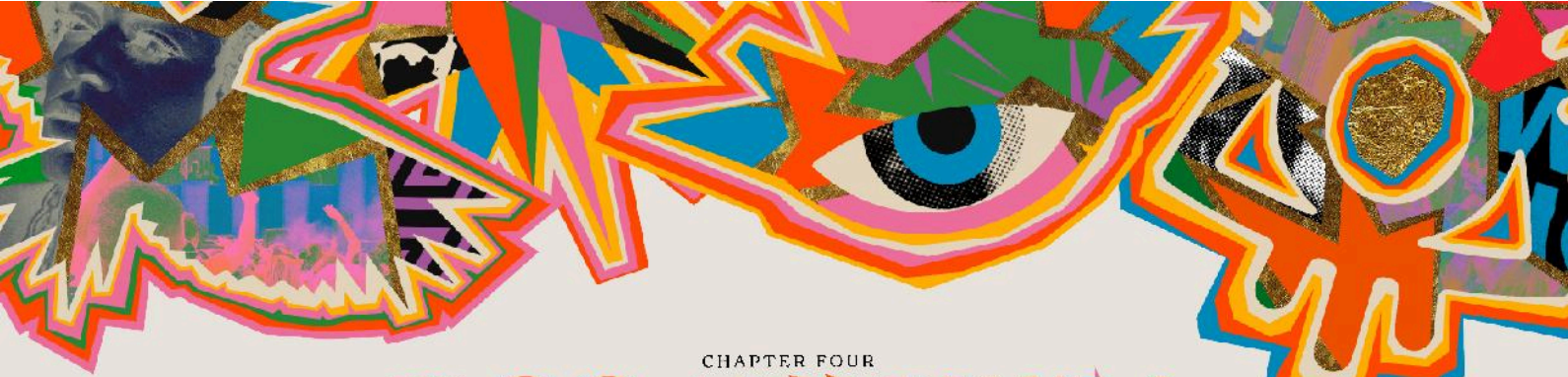
Figure 3.1: Location of Representations



Glastonbury and Boomtown Stage Closing Times

Glastonbury 2024	Boomtown 2024
<u>Wednesday</u> <ul style="list-style-type: none"> Night-time Areas – 00:00 Late-night Areas – 00:00 	<u>Wednesday</u> <i>Inaudibility criteria at monitoring positions.</i> <ul style="list-style-type: none"> Street Parties – 20:00 Small Venues – Up to 23:00
<u>Thursday</u> <ul style="list-style-type: none"> Night-time Areas – 03:00 Late-night Areas – 03:00 	<u>Thursday</u> <ul style="list-style-type: none"> Street Parties – 22:00 Large Venues – 00:00 Small Venues – Up to 00:00
<u>Friday & Saturday</u> <ul style="list-style-type: none"> Primary Outdoor Stages – 00:00 Secondary Outdoor and Big Top Stages – 00:30 Night-time Areas – 03:00 Late-night Areas – 06:00 	<u>Friday & Saturday</u> <ul style="list-style-type: none"> Main Stages: <ul style="list-style-type: none"> Origin – Fri & Sat 03:00 Grand Central – Fri 01:00 & Sat 00:00 Large Venues – Staggered between 02:00 and 04:00 Small Venues – Up to 04:00
<u>Sunday</u> <ul style="list-style-type: none"> Primary Outdoor Stages – 23:30 Secondary Outdoor and Big Top Stages – 00:00 Night-time Areas – 02:30 Late-night Areas – 05:00 	<u>Sunday</u> <ul style="list-style-type: none"> Street Parties – 18:00 Main Stages: <ul style="list-style-type: none"> Origin – 00:00 Grand Central – 00:00 Large Venues – Staggered between 22:00 and 00:00 Small Venues – Up to 00:00
<p>Primary Outdoor Stages: Pyramid Stage, Other Stage, West Holts</p> <p>Secondary Outdoor and Big Top Stages: Woodsies, Levels, Park Stage, Acoustic, Avalon</p> <p>Night-time Areas: Markets and Entertainment Areas (includes: San Remo, Silver Hayes area, Glade area, Theatre & Circus area, Greenpeace area, Arcadia). All these areas have significant large stages.</p> <p>Late-night Areas: Southeast corner and The Park (includes: Shangri La area [Peace Stage], The Common area [Temple outdoor stage], Block 9 area [IICON and Genesis outdoor stages], The Unfairground area, The Park area). All these areas have significant large stages.</p>	<p>Street Parties: Pop-up sound systems.</p> <p>Main Stages: Origin and Grand Central the two main outdoor stages with the festival headliners mainly performing on these stages.</p> <p>Large Venues: The main stages of the districts, including, Hidden Woods, Nexus, Engine House, Zenith, Wrong Side of the Tracks, Spectrum 360.</p> <p>Small Venues: All other venues.</p>

It is difficult to draw a comparison between sizes of stages, as Glastonbury is at least triple the capacity of Boomtown and therefore the Primary Outdoor Stages at Glastonbury are not equal to the Main Stages at Boomtown. The Main Stages at Boomtown are similar in sound system size and capacity as some Night-time area stages at Glastonbury and the Large Venues at Boomtown are similar in sound system size and capacity as some Late-night Area stages at Glastonbury.



CHAPTER FOUR

BOOMTOWN

POWER OF NOW

6-10TH AUGUST 2025

Boomtown Festivals UK Ltd
126 Albert Road
St Phillips Marsh
Bristol

18 Nov 2024

To whom it may concern,

I write in connection with the concerns raised regarding ecology, particularly ground-nesting birds (GNB), in the representation to the licensing review.

Within Boomtown's current planning permission, Condition 4 is imposed and designed to assess whether the festival has any adverse impact on biodiversity and, if it does, what that impact might be (magnitude and duration). Each year, a range of work is undertaken to provide evidence and reporting to the South Downs National Park Authority that supports the discharge of the condition.

All ecological surveys undertaken indicate healthy GNB territories and recent surveys further support this and indicate that the territories have expanded.

In 2022, Boomtown appointed Environmental Planning and Research (EPR) Ltd. to support its planning application by undertaking a full ecological study of the land at the Matterley Estate. To safeguard protected species and their habitats, a rigorous suite of ecological surveys took place across the 2023/24 field seasons to identify protected and notable species using the Site. The future layout and design of the Festival has been guided by the results. In line with the mitigation hierarchy, impact avoidance measures have been considered first and foremost, followed by mitigating measures where applicable, before prescribing compensation strategies where residual impacts remain. Enhancement measures have also been prescribed.

EPR brings extensive expertise in ecological planning and environmental impact assessment. Known for its evidence-based approach, EPR has a strong track record of meeting best practices and regulatory standards. Their portfolio showcases both scientific depth and reliable assessments across a range of complex ecological challenges. As a Chartered Institute of Ecology and Environmental Management (CIEEM) Registered Practice, EPR demonstrates high professional standards that





CHAPTER FOUR

BOOMTOWN

POWER OF NOW

6-10TH AUGUST 2025

ensure the best outcomes for biodiversity while supporting economic growth. Their experience spans projects of all scales, with nationally and internationally recognised expertise in Biodiversity Net Gain and Habitats Regulations Assessments. EPR's capabilities include assessing ecological impacts and designing effective mitigation strategies.

I am confident that the expertise provided by EPR, coupled with the breadth of ecological surveys and assessments conducted, aligns fully with the highest standards of environmental and ecological diligence as outlined in our planning considerations.

EPR's approach adheres strictly to the Chartered Institute of Ecology and Environmental Management (CIEEM) Guidelines for Ecological Impact Assessment in the UK and Ireland. Their methodology involves a structured, step-wise approach that considers each project activity's potential to generate biophysical changes that may affect Important Ecological Features (IEFs). The assessment covers scoping, identification of Zones of Influence, impact evaluations, and application of the mitigation hierarchy to avoid, reduce, or compensate for any adverse effects. This approach ensures a comprehensive evaluation, aligning with both CIEEM standards and relevant policies for biodiversity protection and enhancement.

I confirm that the concerns raised by this resident have been carefully reviewed and are already included in our planning considerations. I understand the importance of transparent and collaborative engagement with the community, and our assessment reflects this commitment.

The ecological assessments and recommendations from EPR will be embedded into our plans, proposals, and operational procedures upon receiving a successful planning determination. Boomtown is dedicated to implementing these ecological recommendations to ensure all mitigative actions and enhancements are effectively carried out.

Finally, I assure you that EPR's study and the resulting mitigation, enhancement, and compensation measures are all encompassed within our formal planning considerations. This includes adherence to environmental policies, compliance with legislation, and fulfilment of obligations related to biodiversity net gain.

I trust that this conveys the thoroughness of our approach and our commitment to the ecological integrity of this project.

Yours Sincerely

Shula Rael
Brand and Communications Director
Boomtown Festival UK Ltd.

