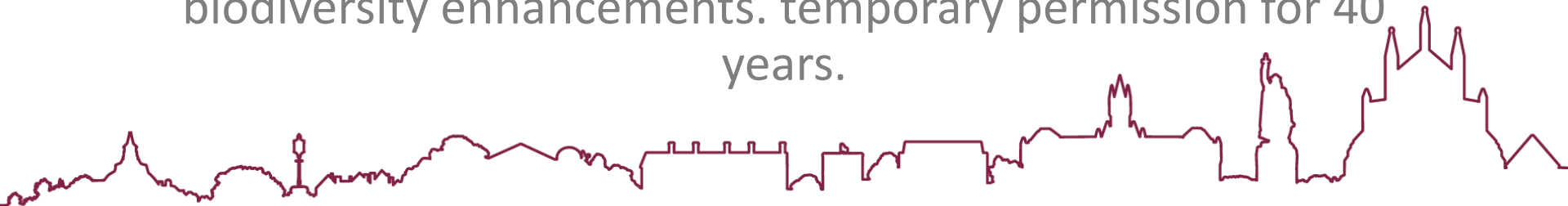


# **24/02804/FUL**

## **Land At Titchfield Lane, Wickham, Hampshire**

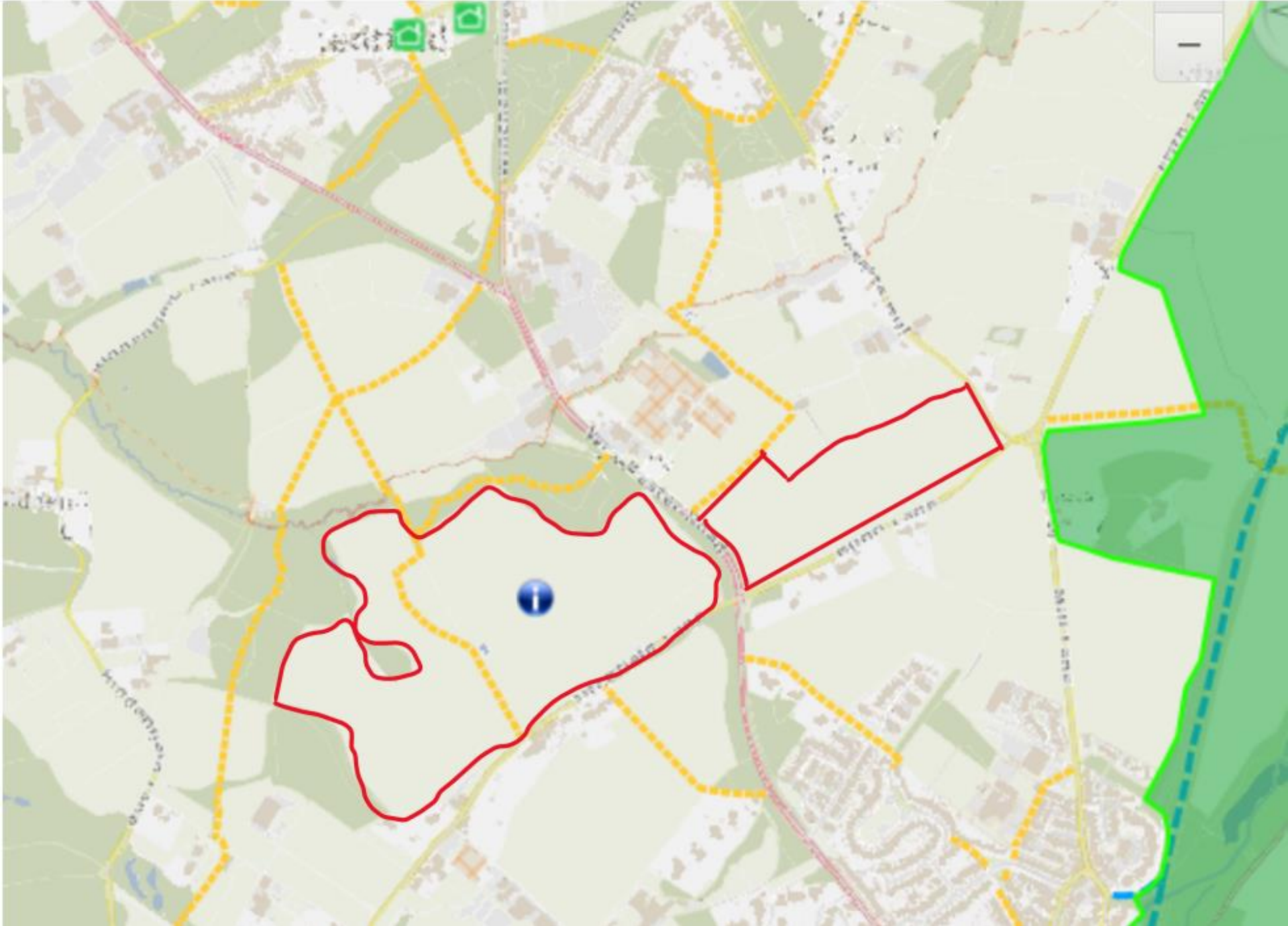
Installation, operation and decommissioning of renewable energy generating station comprising ground-mounted photovoltaic solar arrays together with transformer stations, site accesses, internal access tracks, security measures, access gates, other ancillary infrastructure, landscaping and biodiversity enhancements. temporary permission for 40 years.





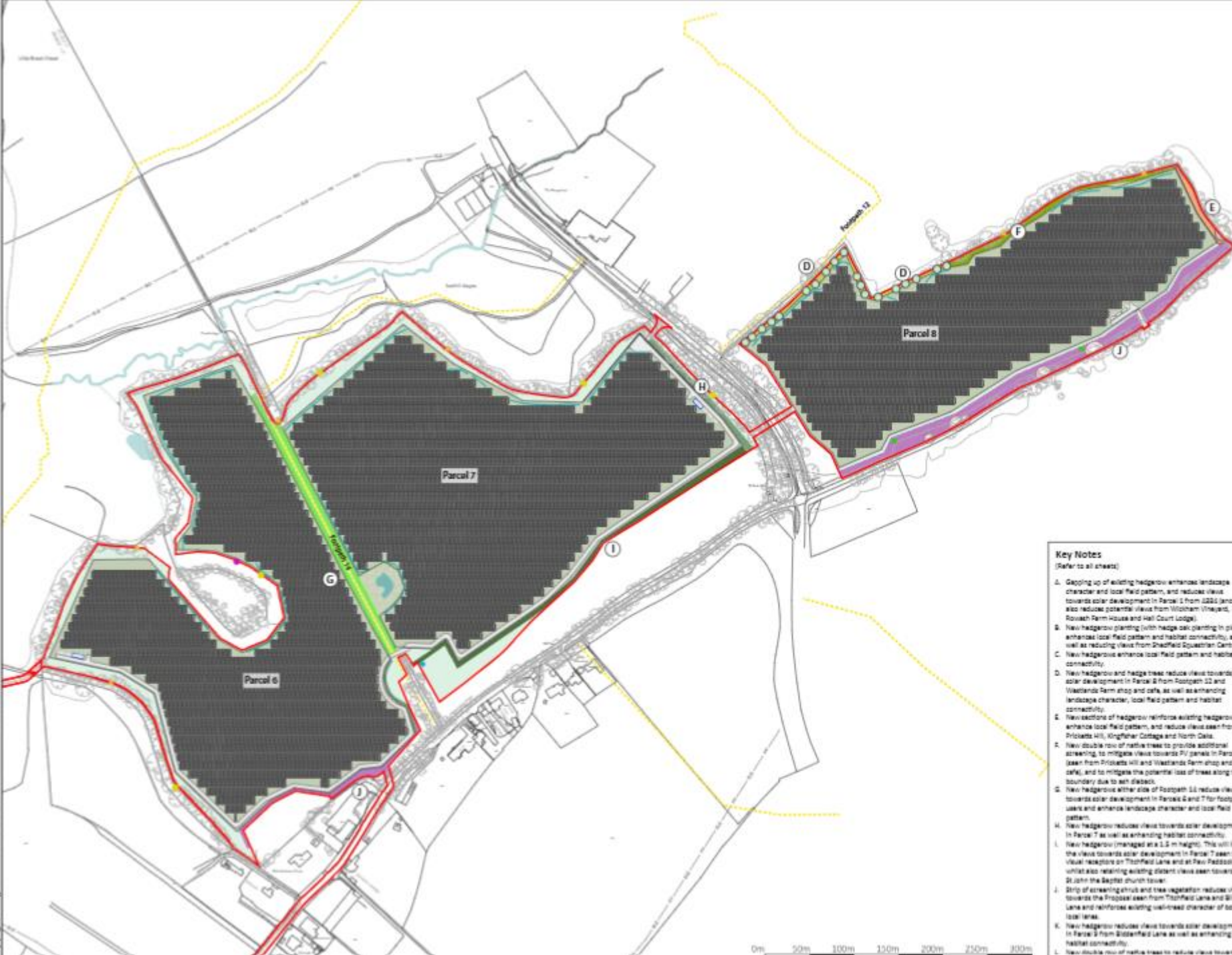








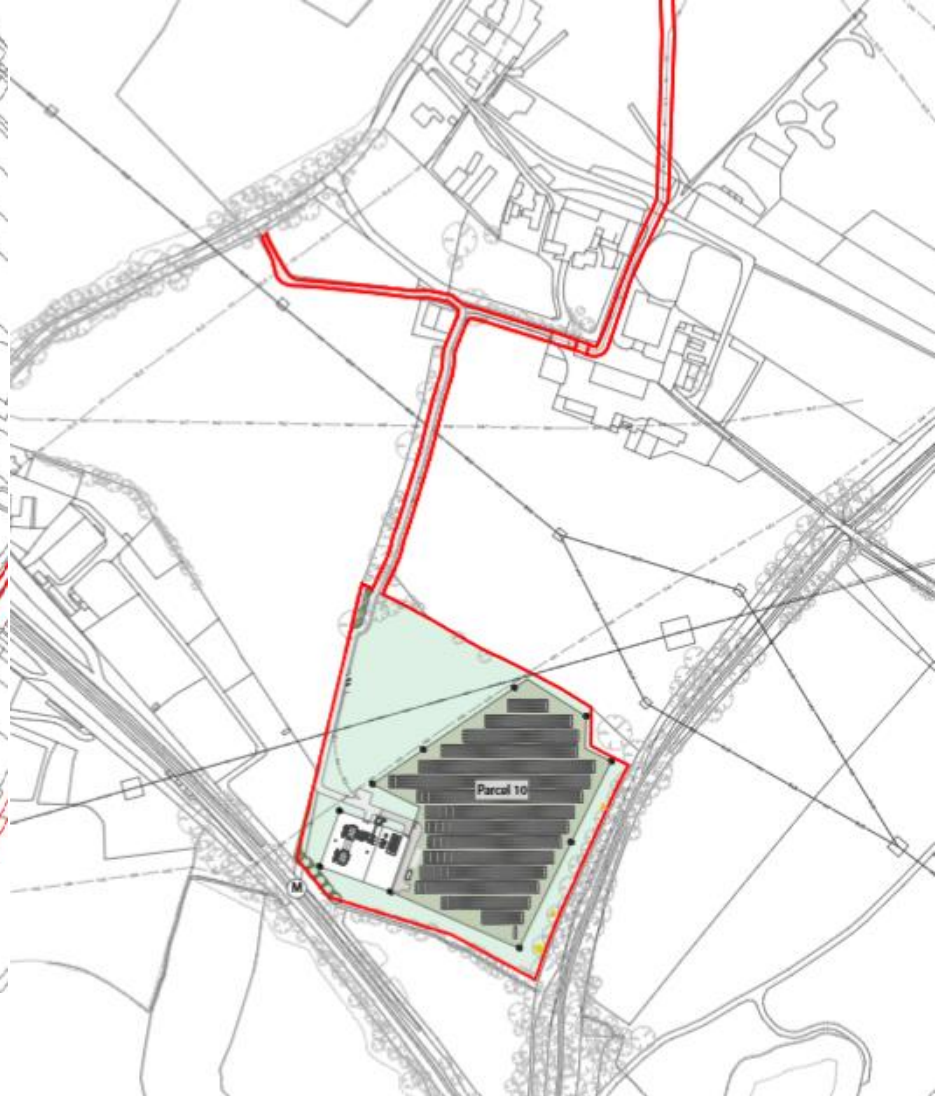


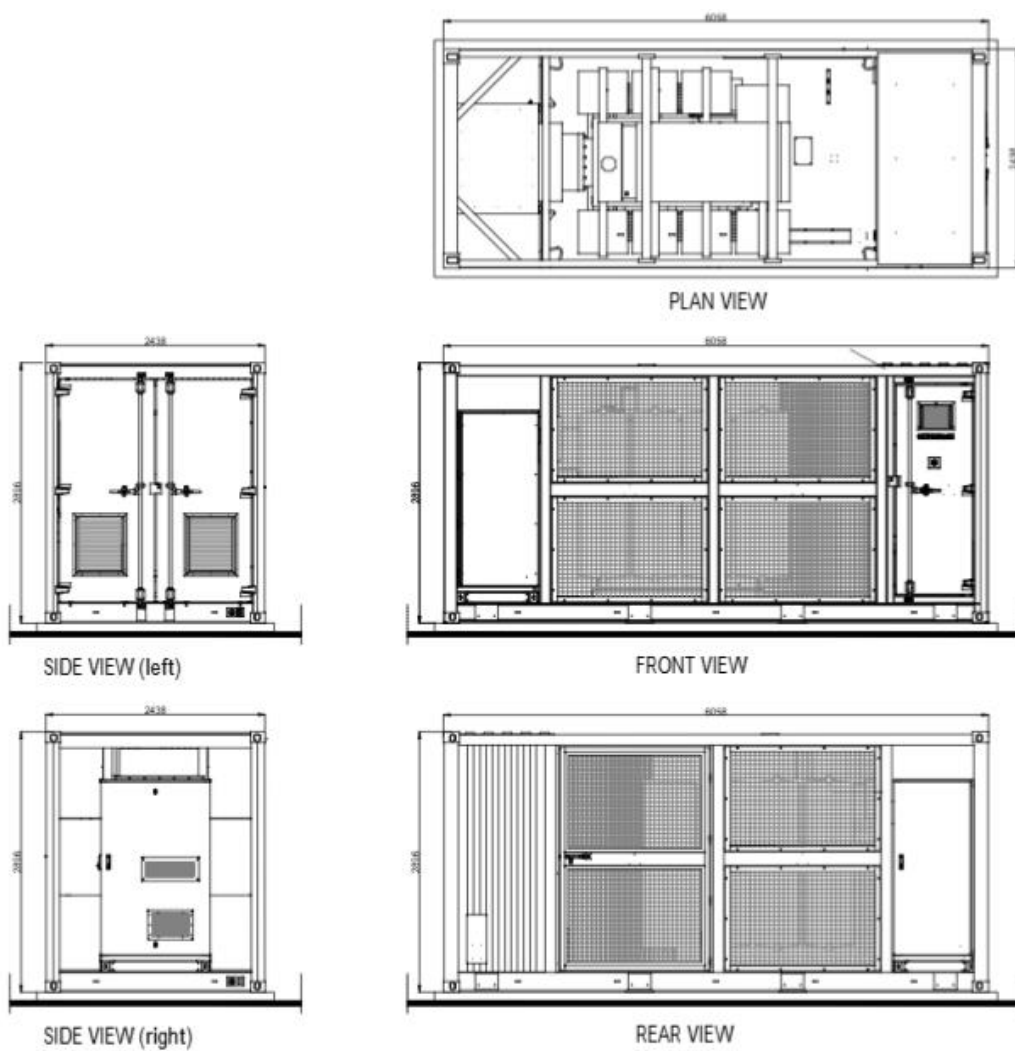


#### Key Notes

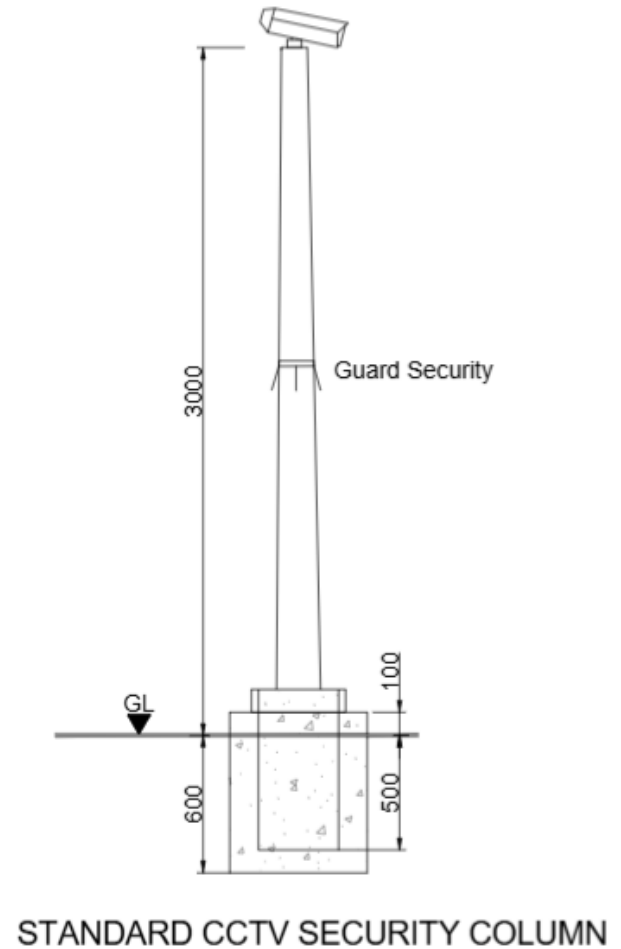
(Refer to all sheets)

- A. Gapping up of existing hedgerow enhances landscape character and local field pattern, and reduces views towards solar development in Parcel 1 from J&S (and also reduces potential views from Widdowham (Hayes), Rowagh Farm house and Hill Court Lodge).
- B. New hedgerow planting (with hedge oak planting in pits) enhances local field pattern and habitat connectivity, as well as reducing views from Shadfield Equestrian Centre.
- C. New hedgerow enhances local field pattern and habitat connectivity.
- D. New hedgerow and hedge trees reduce views towards solar development in Parcel 8 from Footpath 12 and Widdowham Farm shop and cafe, as well as enhancing landscape character, local field pattern and habitat connectivity.
- E. New sections of hedgerow reinforce existing hedgerow, enhance local field pattern, and reduce views seen from Prioketts Hill, Kingfisher Cottage and North Oaks.
- F. New double row of native trees to provide additional screening, to mitigate views towards PV panels in Parcel 8 (seen from Prioketts Hill and Widdowham Farm shop and cafe), and to mitigate the potential loss of trees along its boundary due to ash dieback.
- G. New hedgerow either side of Footpath 12 reduces view towards solar development in Parcels 6 and 7 for footpath users and enhances landscape character and local field pattern.
- H. New hedgerow reduces view towards solar development in Parcel 7 as well as enhancing habitat connectivity.
- I. New hedgerow (planted at a 1.5 m height). This will in the view towards solar development in Parcel 7 seen from visual receptors on Thorfield Lane and at Paul Reddick whilst also retaining existing distant views seen towards St John the Baptist church tower.
- J. Strip of screening shrub and tree vegetation reduces view towards the proposed solar farm from Thorfield Lane and Bin Lane and reinforces existing visual character of both local lanes.
- K. New hedgerow reduces view towards solar development in Parcel 8 from Bitterfield Lane as well as enhancing habitat connectivity.
- L. New double row of native trees to reduce views towards



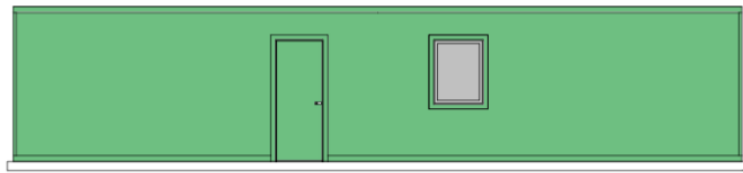


Proposed substation

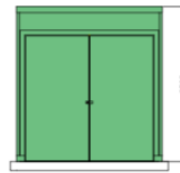


Proposed CCTV column

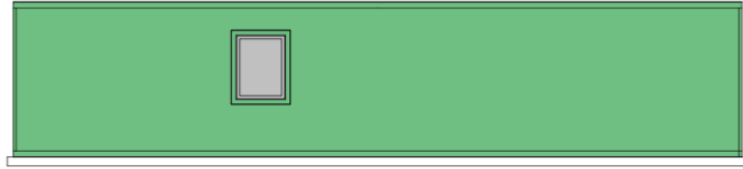




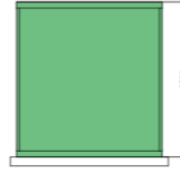
Front Elevation



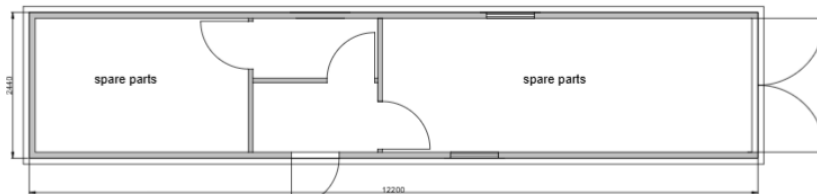
Side Elevation



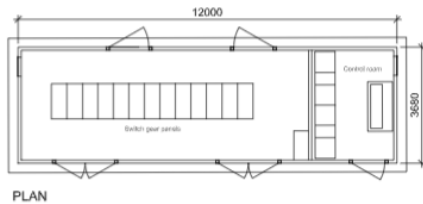
Rear Elevation



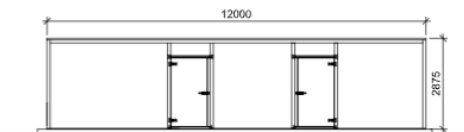
Side Elevation



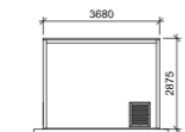
## Switch gear container



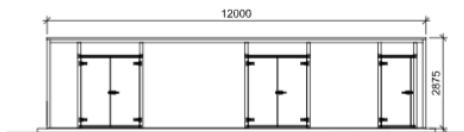
PLAN



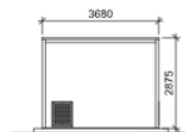
REAR ELEVATION



SIDE ELEVATION



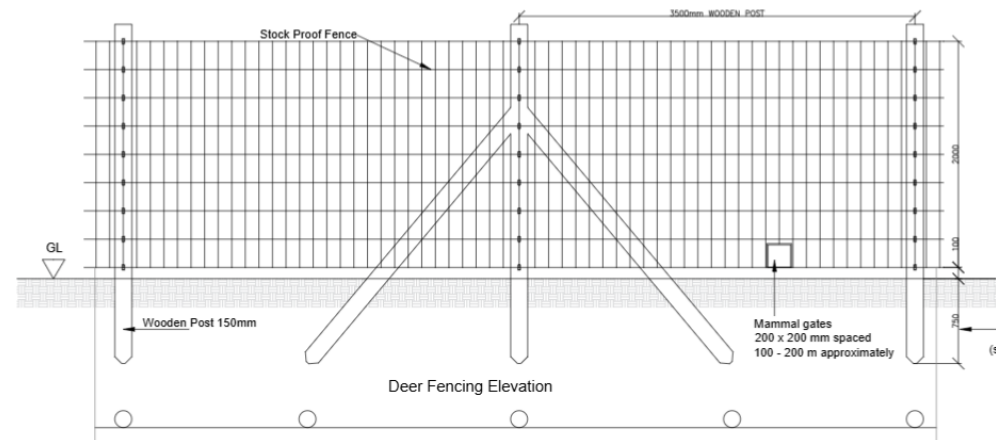
FRONT ELEVATION

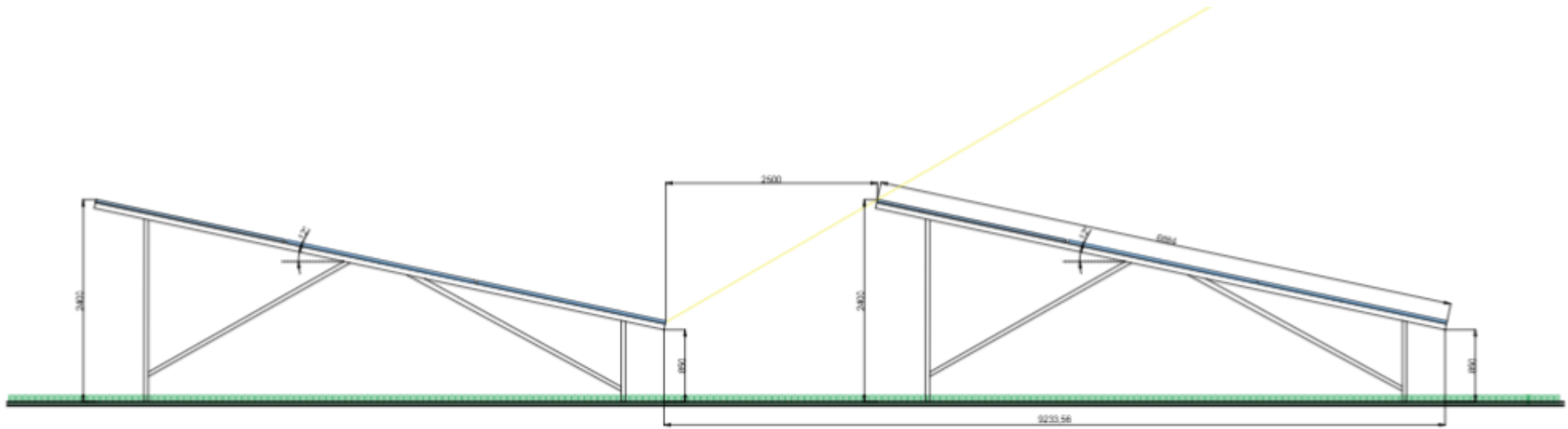


SIDE ELEVATION

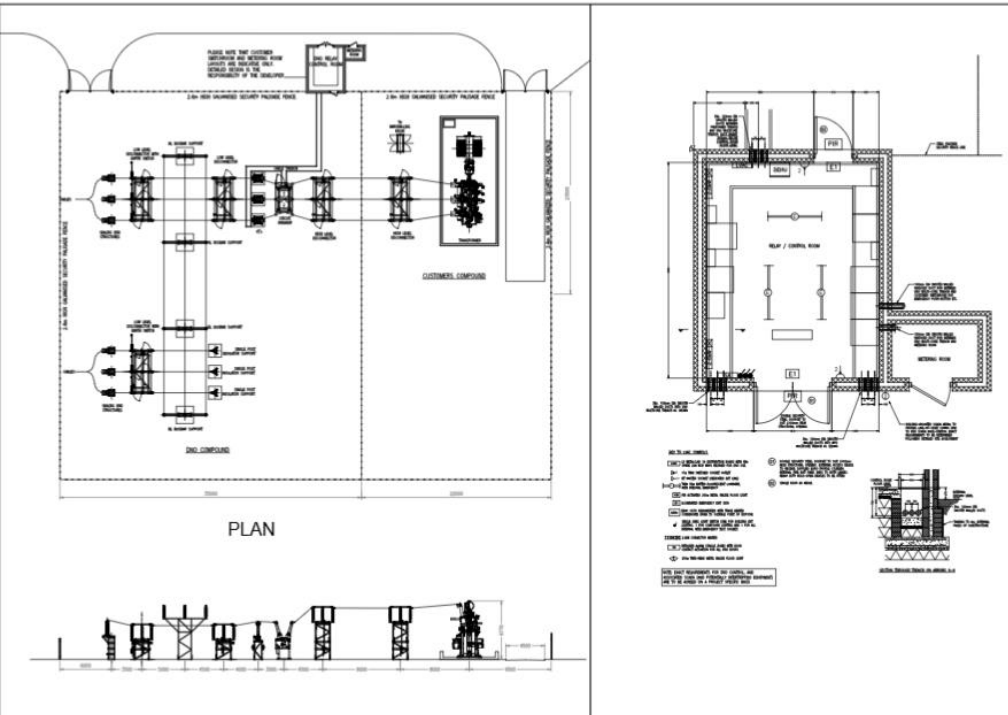
## Spare parts container

## Proposed deer fencing





Proposed solar array cross section

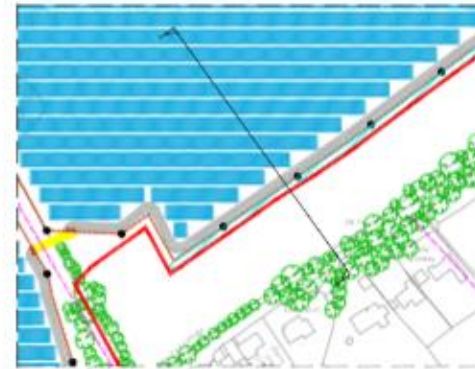


Proposed main substation parcel 10



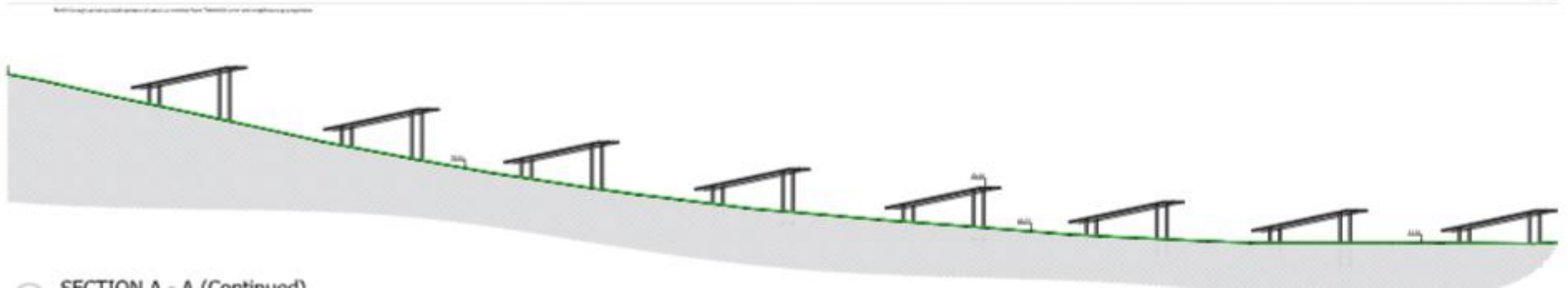
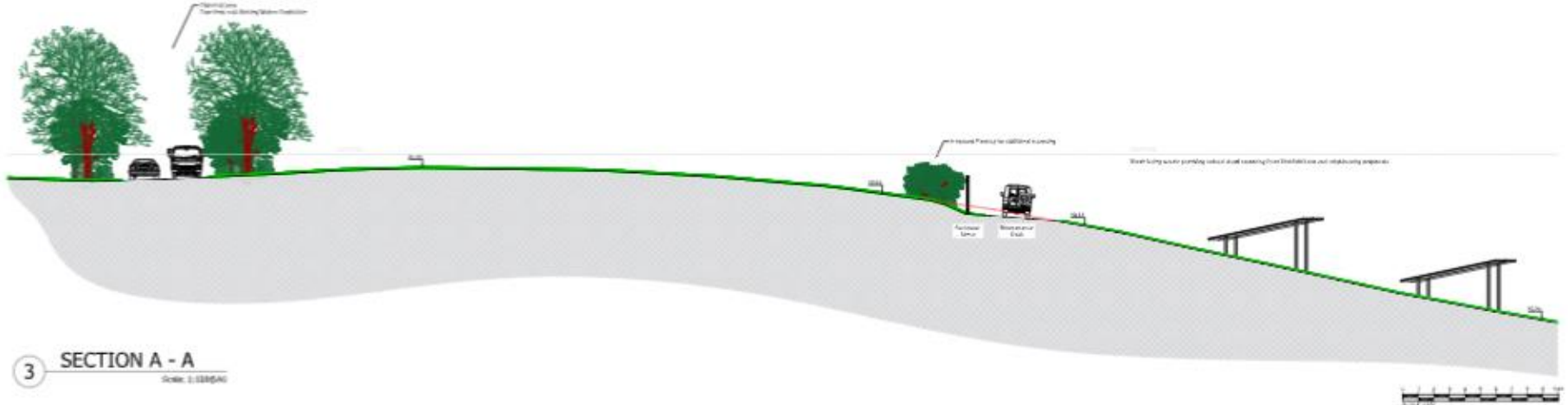
1 KEY PLAN

Scale: 1:5000(40)



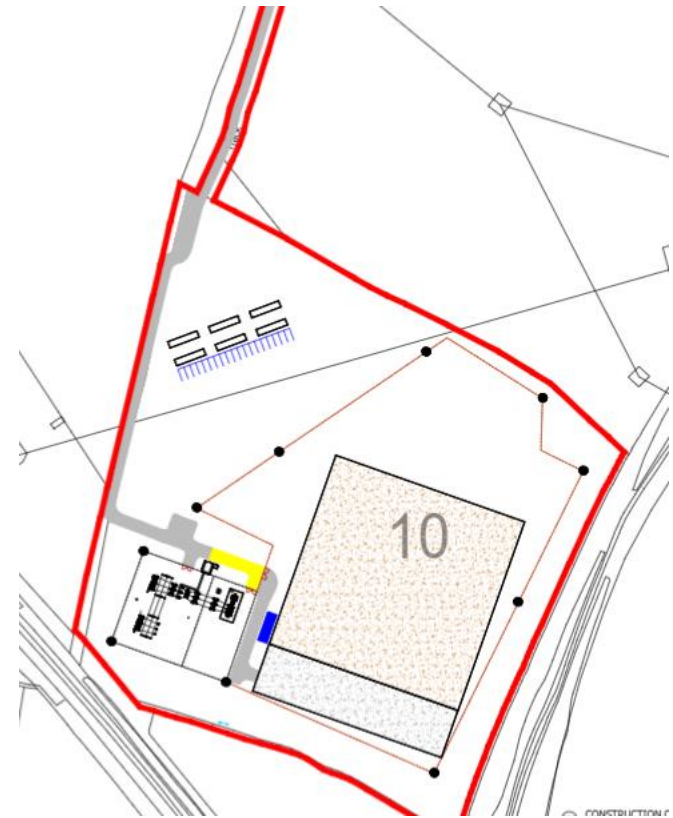
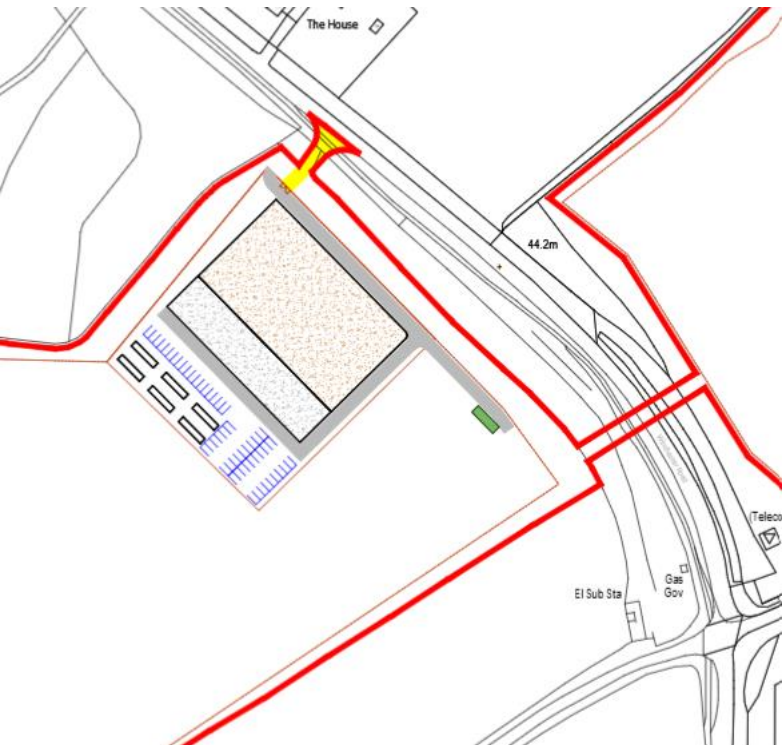
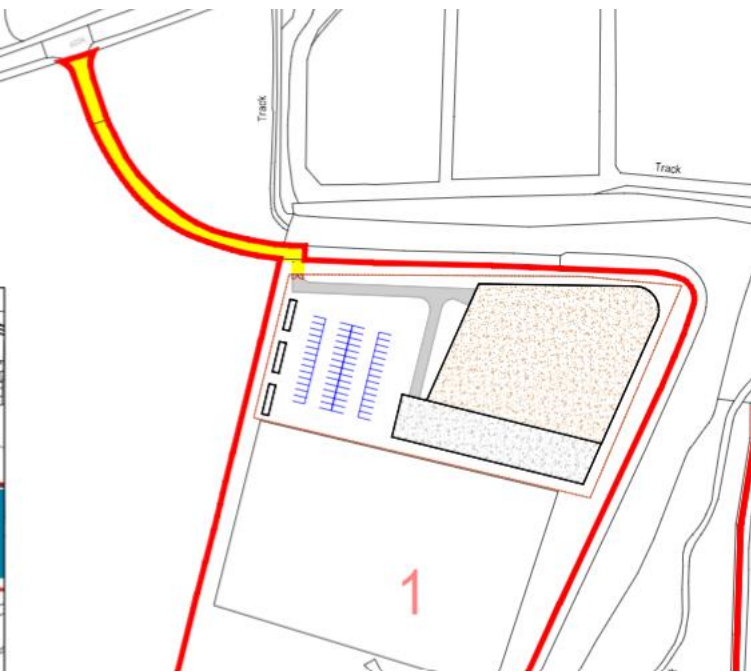
2 CROSS SECTION DETAIL

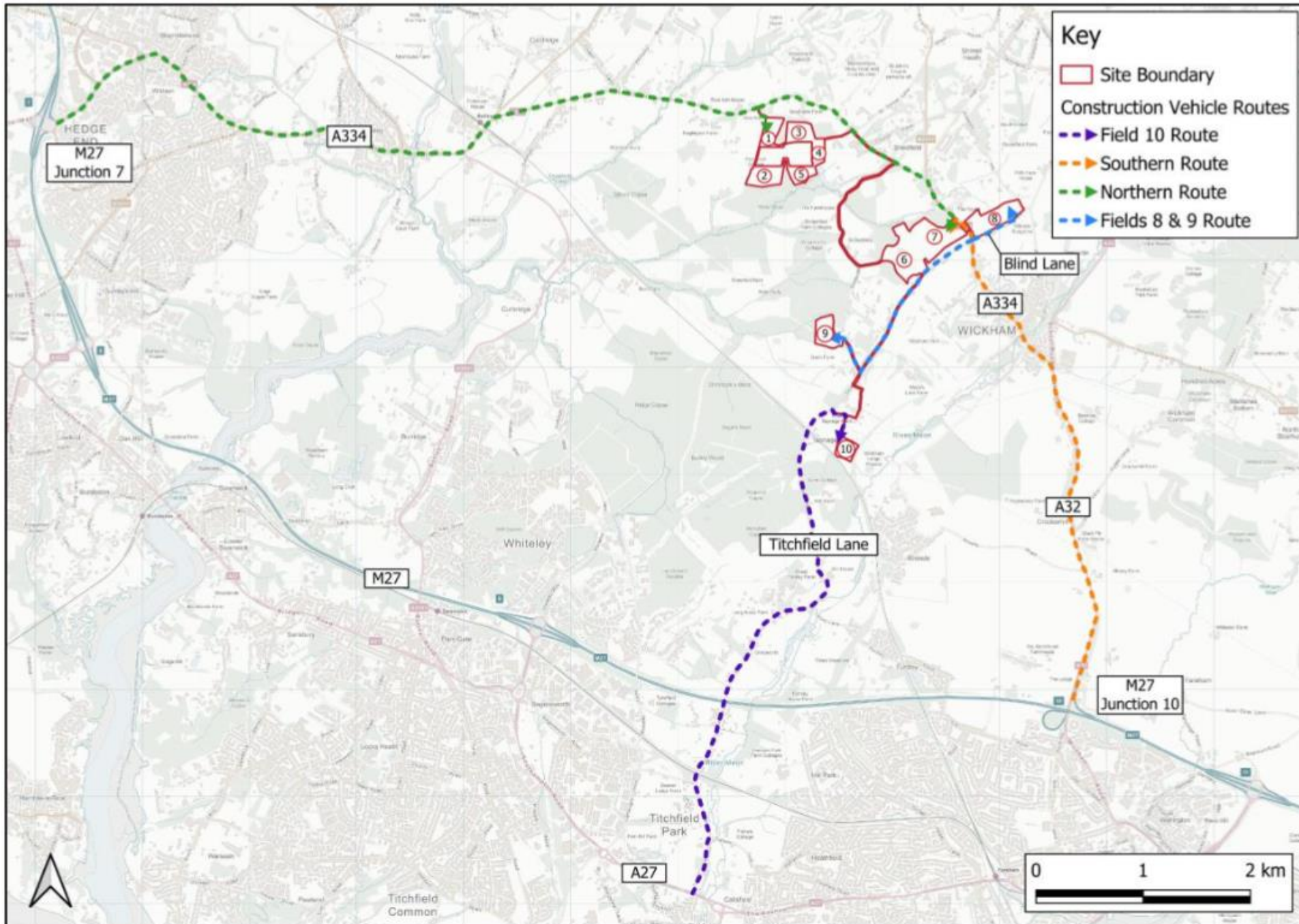
Scale: 1:1000(40)





## Proposed construction compounds







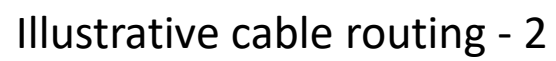


Proposed footpath change

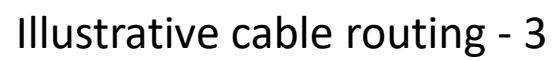




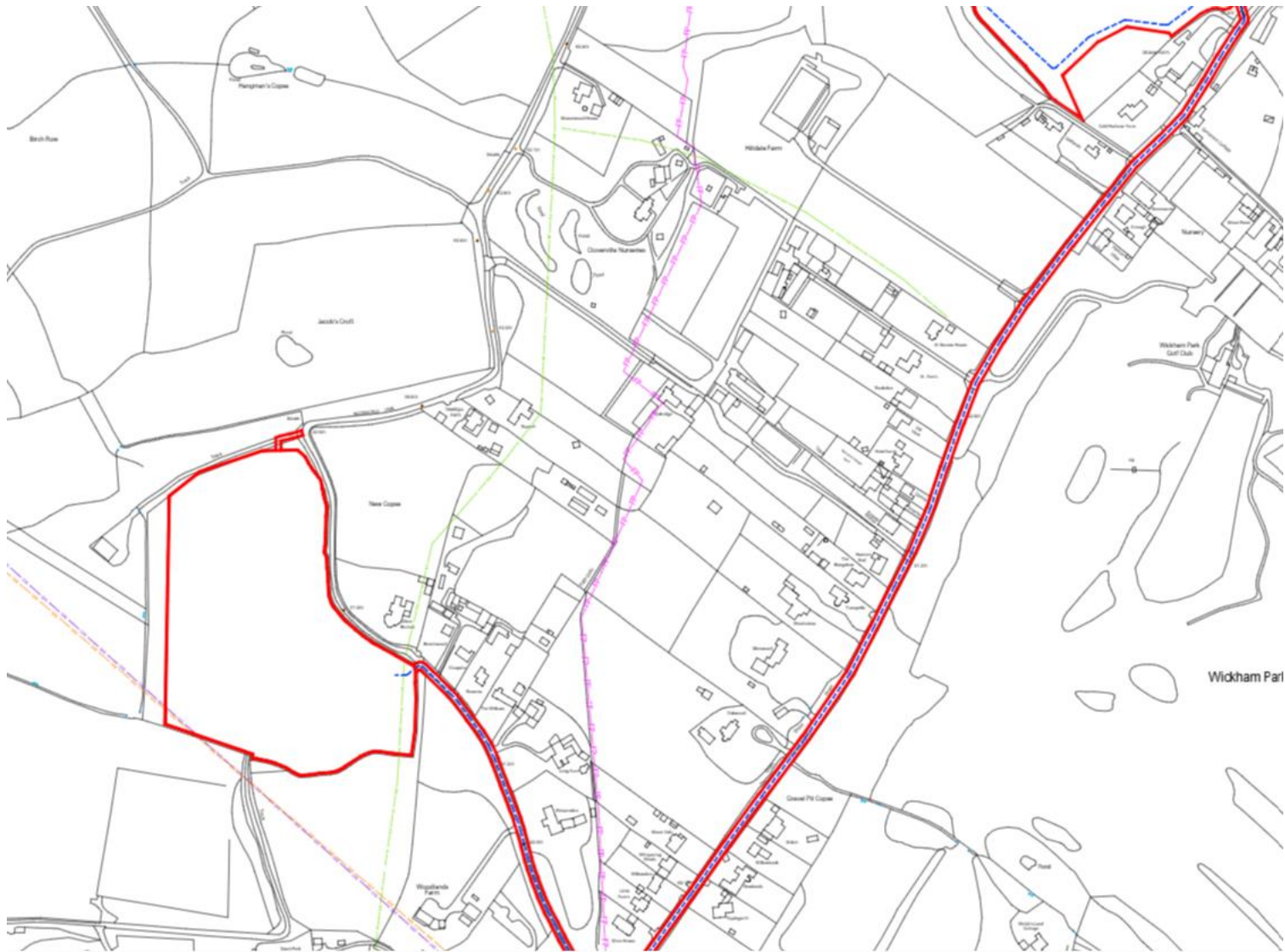
Illustrative cable routing - 1



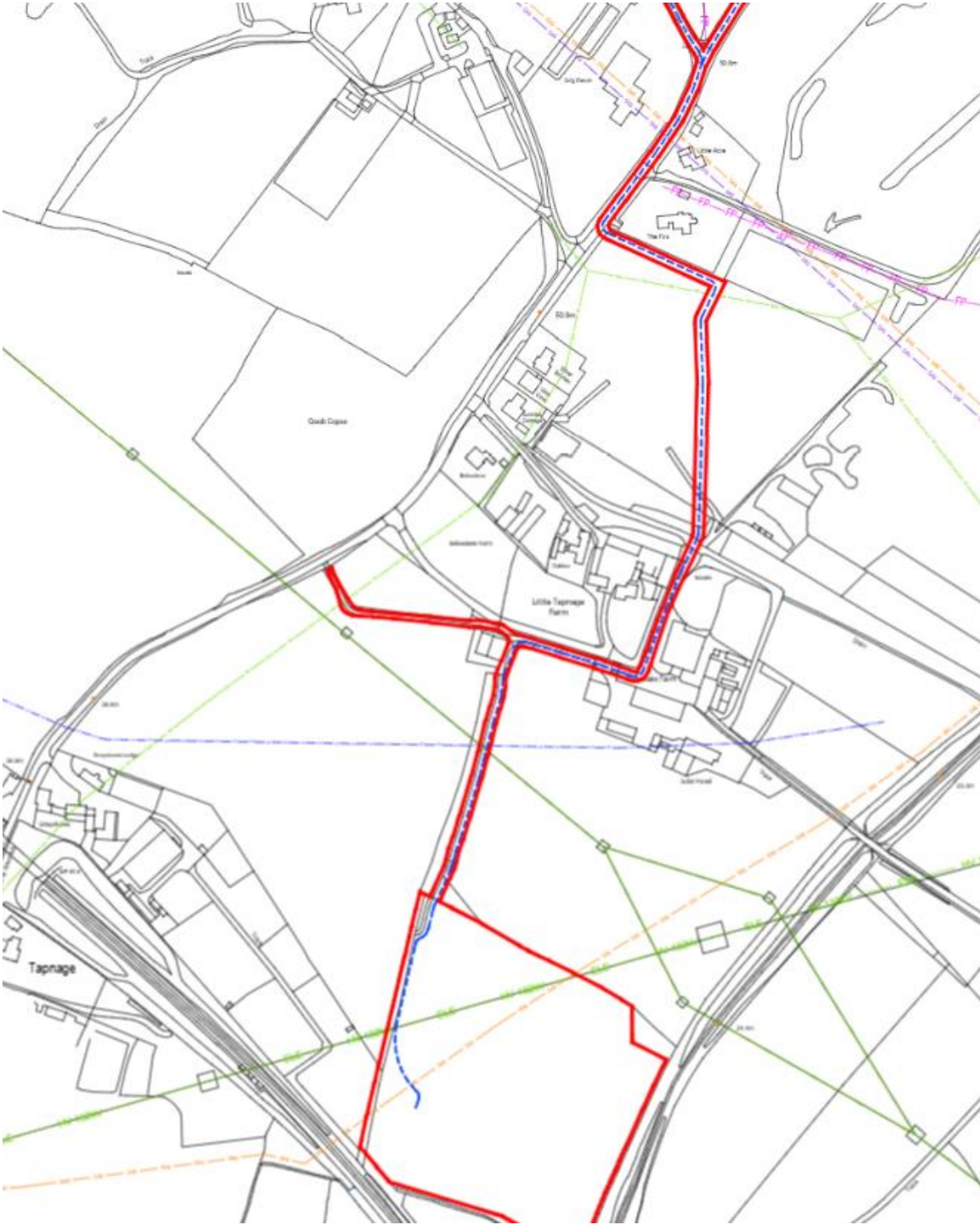
## Illustrative cable routing - 2







Illustrative cable routing - 4



Illustrative cable routing - 5

















Location of possible Southern Water Pipeline





View existing access road to  
parcel 1



View across parcel 1 from NE  
corner



View across parcel 1  
toward Hall Court



View from western edge of  
parcel 1 toward A334





View across parcel 2 from NE corner



View across parcel 2 from SW corner





View toward Hall Court from  
gap in hedge at parcel 2



View across parcel 2 looking  
south



View across parcel 3 looing north



View across parcel 3





View across parcel 3 toward  
parcel 4 and Shedfield  
Equestrian Centre



View across parcel 4 looking  
toward parcel 3





View across parcel 4 from  
existing access track



View across parcel 4 from  
existing access track



View of parcel 4 from  
Shedfield Equestrian access







View across parcel 5 looking  
SW



View across parcel 5 looking  
east





View across parcel 6 looking north



View across parcel 6 looking toward Cold Harbour Farm



View across parcel 6 looking  
north east toward parcel 7



View across parcel 7 looking  
south to Titchfield Lane





Desire line of footpath  
proposed to be re-routed to  
follow.



View across Parcel 8 looking  
west



View across Parcel 8 looking north toward PROW



View of existing boundary to parcel 8





View across Parcel 9 looking  
north east



View across Parcel 9 north



View across Parcel 9 south



View of Parcel 9 existing access





View across Parcel 10 south  
toward train line



View across Parcel 10  
looking north from PROW

# **RECOMMENDATION - PERMIT**