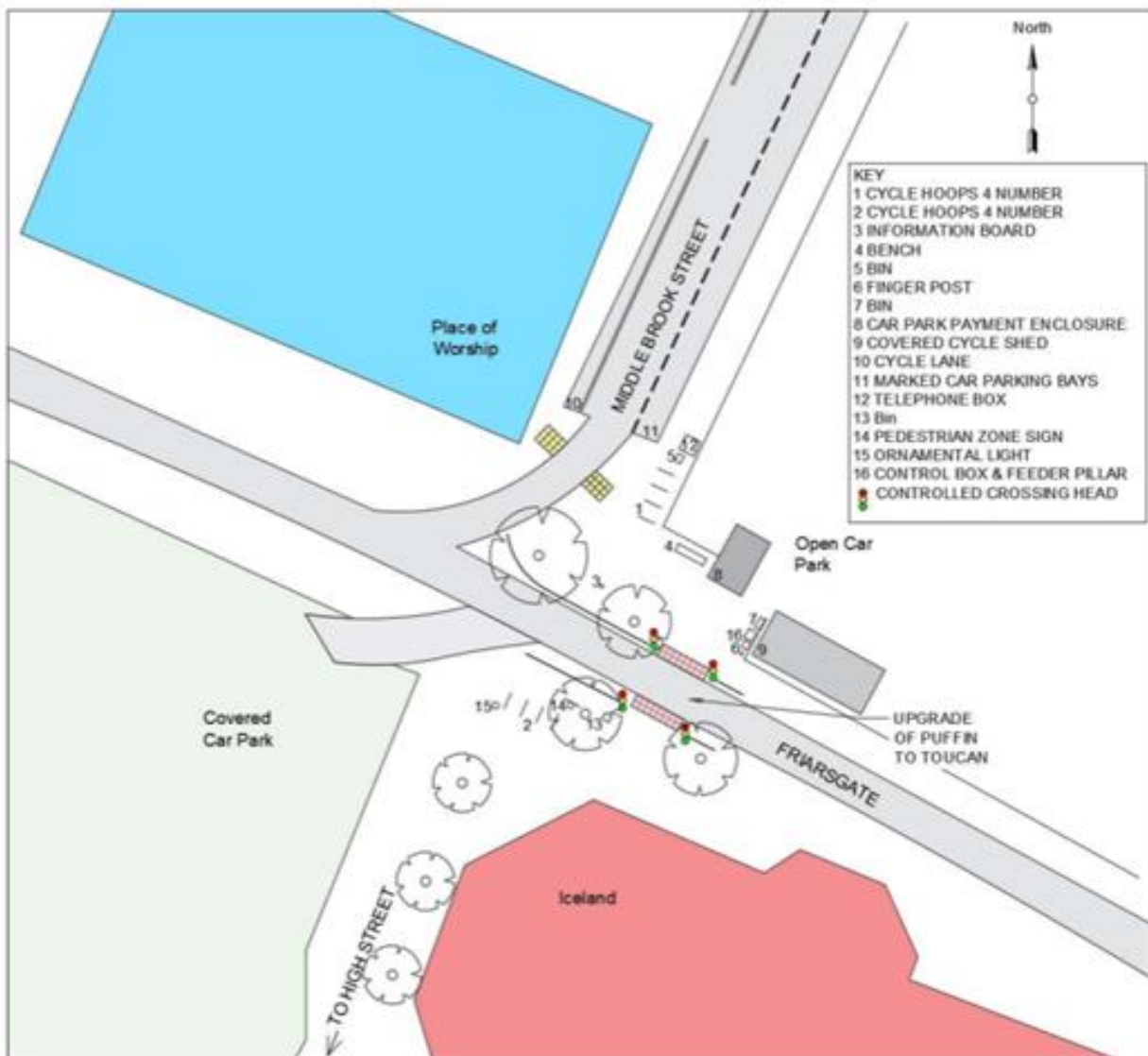
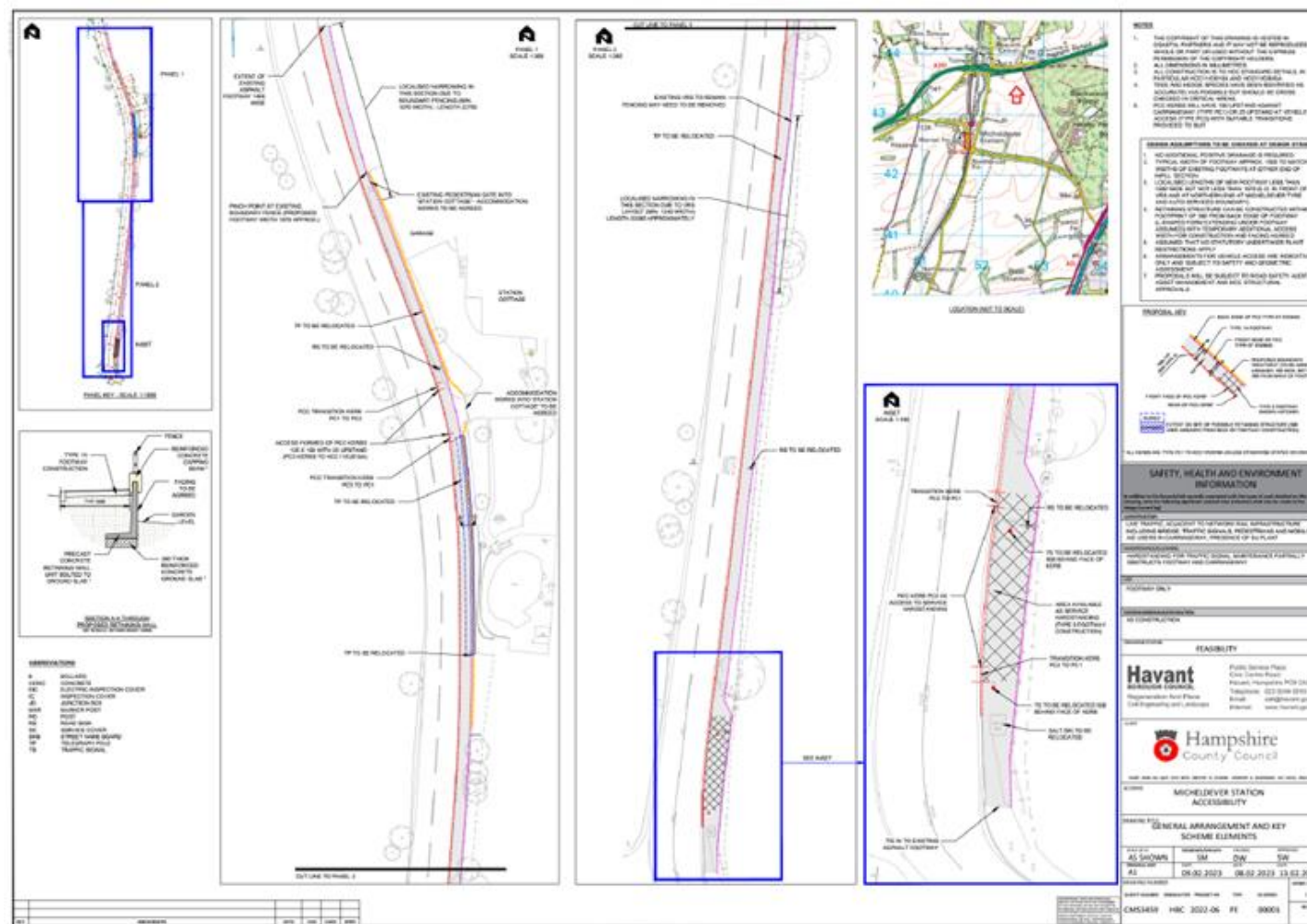


Appendix 3

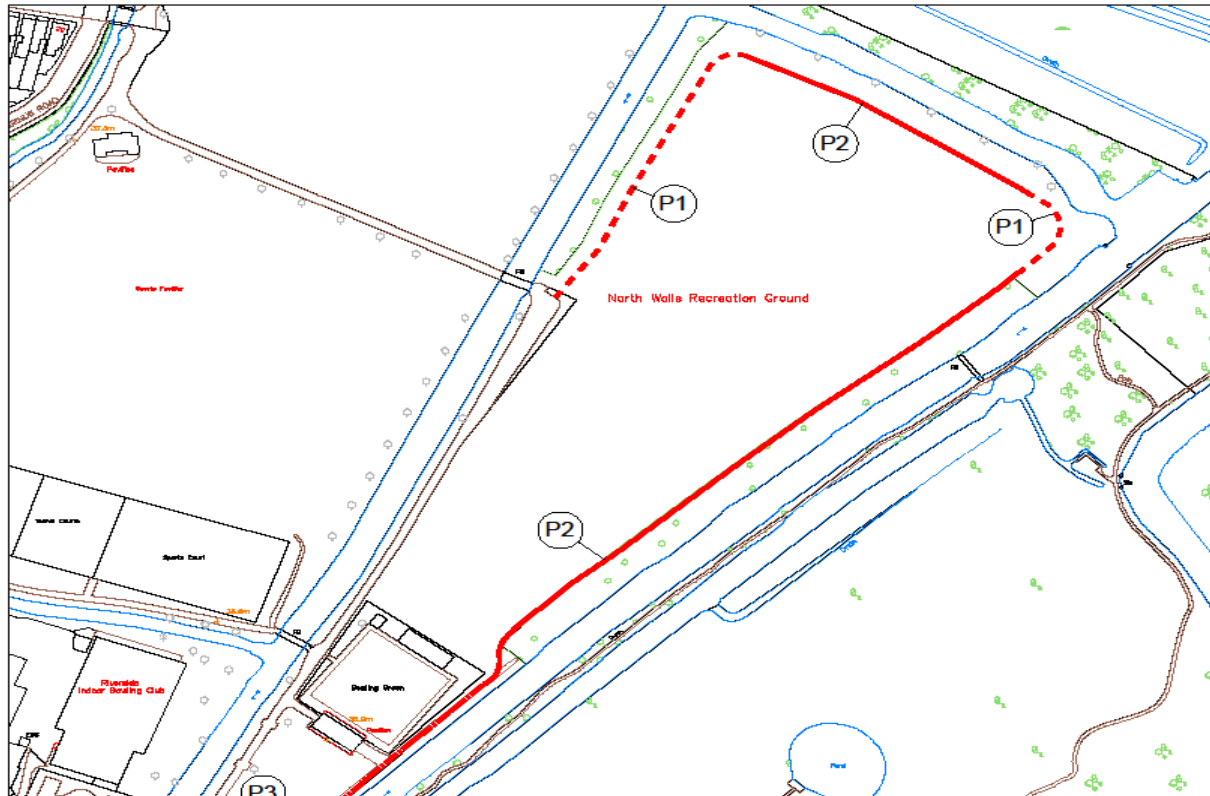
Friarsgate Winchester



Micheldever Station



River Park recreation ground, Winchester



Scale 1:1500 @ A3

Approximate course of 1.5m wide screened hoggin footpath.

Total Length = approx. 697m

P1 type build - 178m

P2 type build - 367m

P3 type build - 152m

Note: Drawing is for estimation purposes only. Not for construction.

Project: River Park Path	Date: 15 Jan 2025
Title: Estimation - Rugby Ground Area	Drawn: MW
Drg. No: 01	Winchester City Council

