



| Issue | Date | Notes | Drawn | Checked |
|-------|----------|-----------------------------------|-------|---------|
| P01 | 31.01.19 | Submitted for Planning Conditions | JP | APLB |

Project
St Clements Surgery
 Winchester City Council

Drawing
Site Plan

Scale
1 : 200 @ A1

Job
2241_GAD 100003

Revision
 P01



do not scale ©
 For CDM information refer to the ArchitecturePLB Hazard Elimination and Residual Risk Register. Notes on this drawing refer only to items where a Residual Risk can be clearly linked to a specific item. As recommended within 'ADCP-Managing Health and Safety in Construction', notes do not include generic risk information which must be considered by the relevant contractor.

50 Southwark
 London, SE1 1UN
 Telephone 020 7340 1888
 www.architectureplb.co

St Thomas Street
 Winchester SO23 8HD
 Telephone 01962 842 200



Note
 NB. Furniture and equipment layouts, where shown, indicative only

Key



| Issue | Date | Notes | Drawn | Chkd |
|-------|----------|-----------------------------------|-------|------|
| P01 | 31.01.19 | Submitted for Planning Conditions | JP | APLB |

Project
St Clements Surgery
 Winchester City Council

Drawing
GA Plan - Ground Floor

Scale
1 : 100 @ A1

Job
2241_GAD 120000

Revision
 P01



do not scale ©
 For CDM information refer to the ArchitecturePLB Hazard Elimination and Residual Risk Register. Notes on this drawing refer only to items where a Residual Risk can be clearly linked to a specific item. As recommended within 'ACOP-Managing Health and Safety in Construction', notes do not include generic risk information which must be considered by the relevant contractor.

50 Southwark
 London, SE1 1UN
 Telephone 020 7340 1888
 www.architectureplb.co

St Thomas Street
 Winchester SO23 8HD
 Telephone 01962 842 200





| Issue | Date | Notes | Drawn | Chkd |
|-------|----------|-----------------------------------|-------|------|
| P01 | 31.01.19 | Submitted for Planning Conditions | JP | APLB |

Project
St Clements Surgery
 Winchester City Council

Drawing
GA Plan - First Floor

Scale
1 : 100 @ A1

Job
2241_GAD 120001

Revision
P01



do not scale ©
 For CDM information refer to the ArchitecturePLB Hazard Elimination and Residual Risk Register. Notes on this drawing refer only to items where a Residual Risk can be clearly linked to a specific item. As recommended within 'Adopting Managing Health and Safety in Construction', notes do not include generic risk information which must be considered by the relevant contractor.

50 Southwark
 London, SE1 1UN
 Telephone 020 7340 1888
 www.architectureplb.co

St Thomas Street
 Winchester SO23 8HD
 Telephone 01962 842 200





| Issue | Date | Notes | Drawn | Chkd |
|-------|----------|-----------------------------------|-------|------|
| P01 | 31.01.19 | Submitted for Planning Conditions | JP | APLB |

Green line indicates extent of site ownership

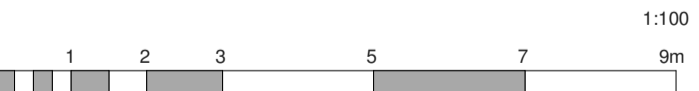
Project
St Clements Surgery
 Winchester City Council

Drawing
GA Plan - Second Floor

Scale
1 : 100 @ A1

Job
2241_GAD 120002

Revision
P01



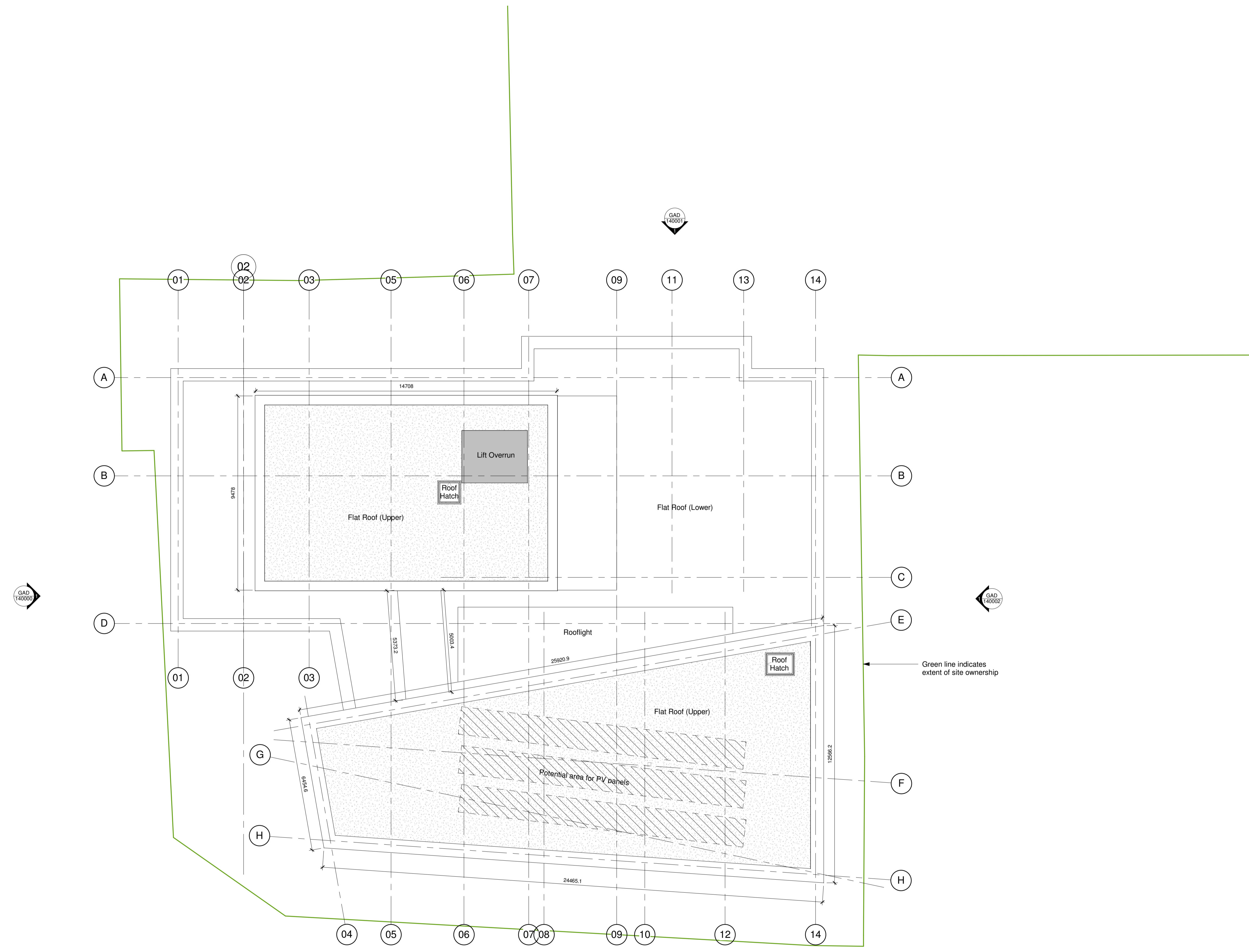
do not scale ©
 For CDM information refer to the ArchitecturePLB Hazard Elimination and Residual Risk Register. Notes on this drawing refer only to items where a Residual Risk can be clearly linked to a specific item. As recommended within 'AdCP-Managing Health and Safety in Construction', notes do not include generic risk information which must be considered by the relevant contractor.

50 Southwark
 London, SE1 1UN
 Telephone 020 7340 1888

St Thomas Street
 Winchester SO23 8HD
 Telephone 01962 842 200

www.architectureplb.co





| Issue | Date | Notes | Drawn | Checked |
|-------|----------|-----------------------------------|-------|---------|
| P01 | 31.01.19 | Submitted for Planning Conditions | JP | APLB |

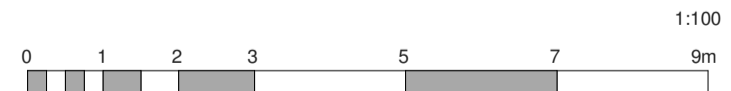
Project
St Clements Surgery
 Winchester City Council

Drawing
GA Plan - Roof

Scale
1 : 100 @ A1

Job
2241_GAD 120003

Revision
P01



do not scale ©

For CDM information refer to the ArchitecturePLB Hazard Elimination and Residual Risk Register. Notes on this drawing refer only to items where a Residual Risk can be clearly linked to a specific item. As recommended within 'AdCoP-Managing Health and Safety in Construction', notes do not include generic risk information which must be considered by the relevant contractor.

50 Southwark
 London, SE1 1UN
 Telephone 020 7340 1888
 www.architectureplb.co

St Thomas Street
 Winchester SO23 8HD
 Telephone 01962 842 200

