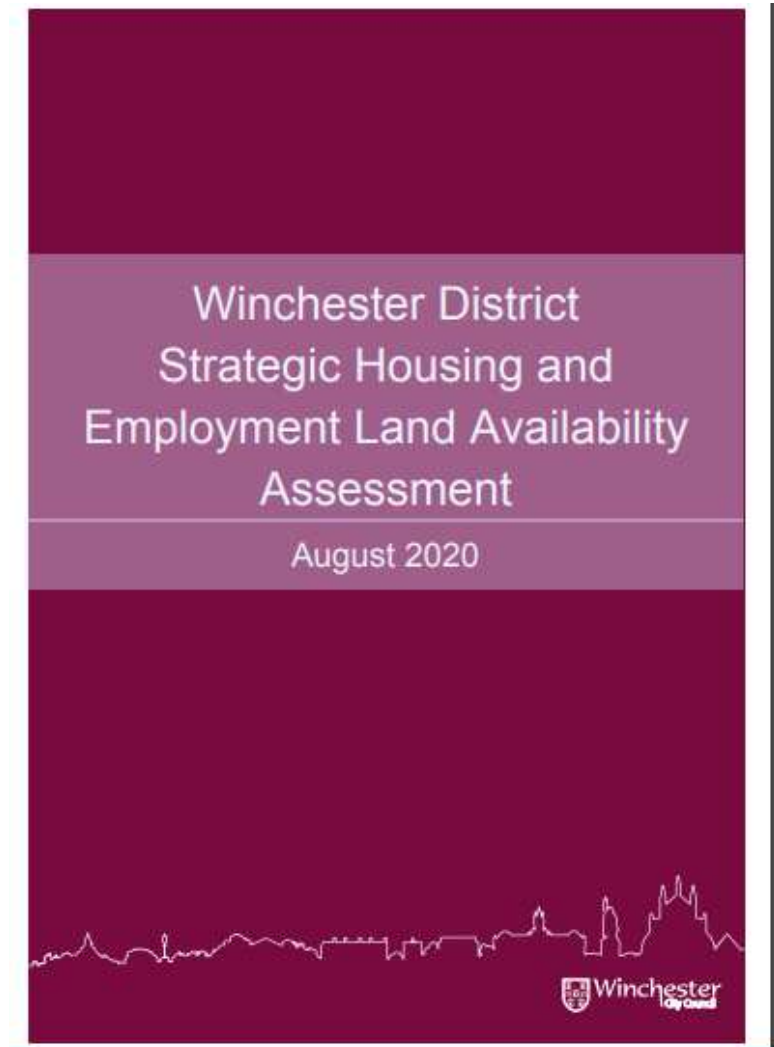


Strategic Housing and Land Availability Assessment (SHELAA)

Briefing September 2021



SHELAA – OVERVIEW



Call for Sites Jan – March 2020

Broad assessment of sites undertaken

‘SHELAA’ Published August 2020

Further Call for Sites Q1 2021

Further Assessment and Mapping Work Undertaken

This briefing outlines sites put forward. We will be seeking approval to publish Updated SHELAA 2021 and commence engagement with Parish Councils on specific sites.

SHELAA – 2021 PROGRESS

Further Call for Sites: 15 Feb – 12 April 2021

Sought a wider range of sites with the potential for;

- Homes (including small sites, self and custom build, gypsy, traveller and travelling showpersons);
- Employment land;
- Biodiversity Net Gain and Offsetting;
- Green Infrastructure;
- Carbon Offsetting;
- Nitrogen Offsetting;
- Renewable Energy; and
- Brownfield Land

SHELAA 2021 – HIGHLIGHTS

Call for Sites 2021:

- **115** housing sites submitted (= 98 'new' and 17 'resubmissions')
- **10** 'green sites' submitted (yet only 5 have landowner's consent)

4 sites withdrawn:

- HCC sites: (CS05, CU17, WIN15); and
- Royal Down (HU02) replaced with smaller site HU12

TOTAL NUMBER OF SITES BEING ASSESSED:

= 391 housing/ employment sites + 10 green sites

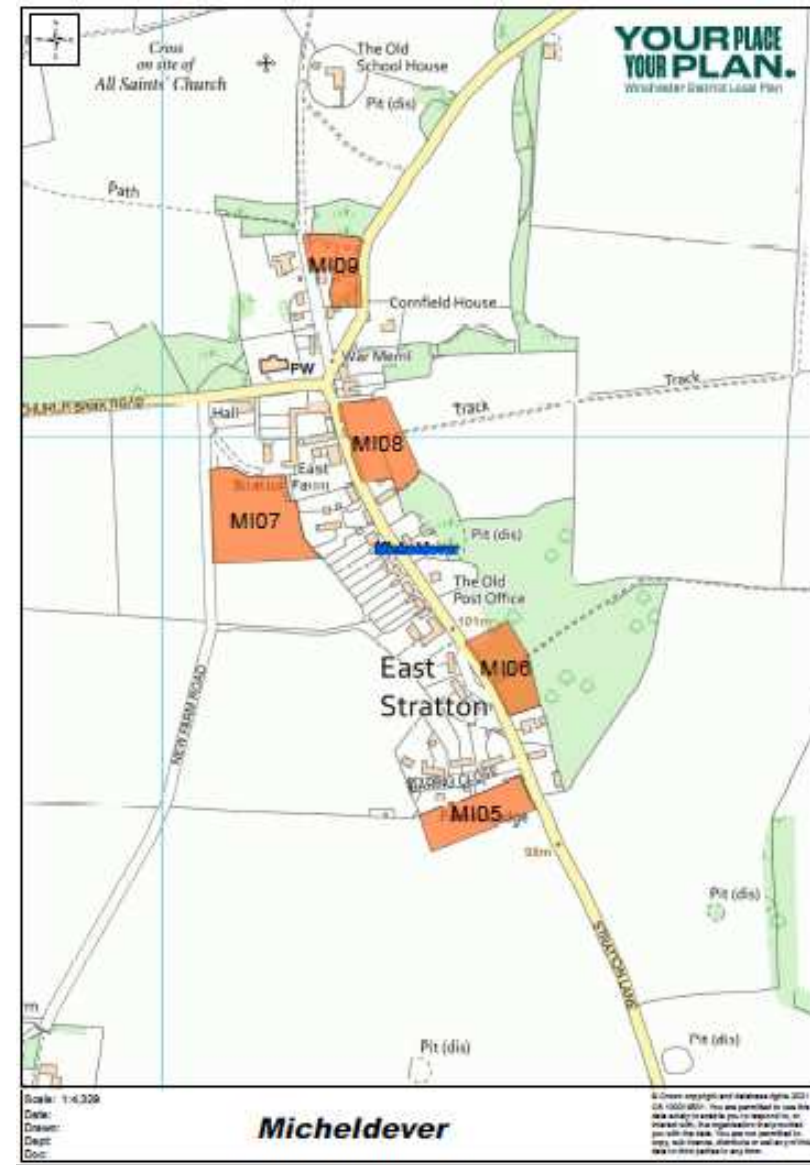
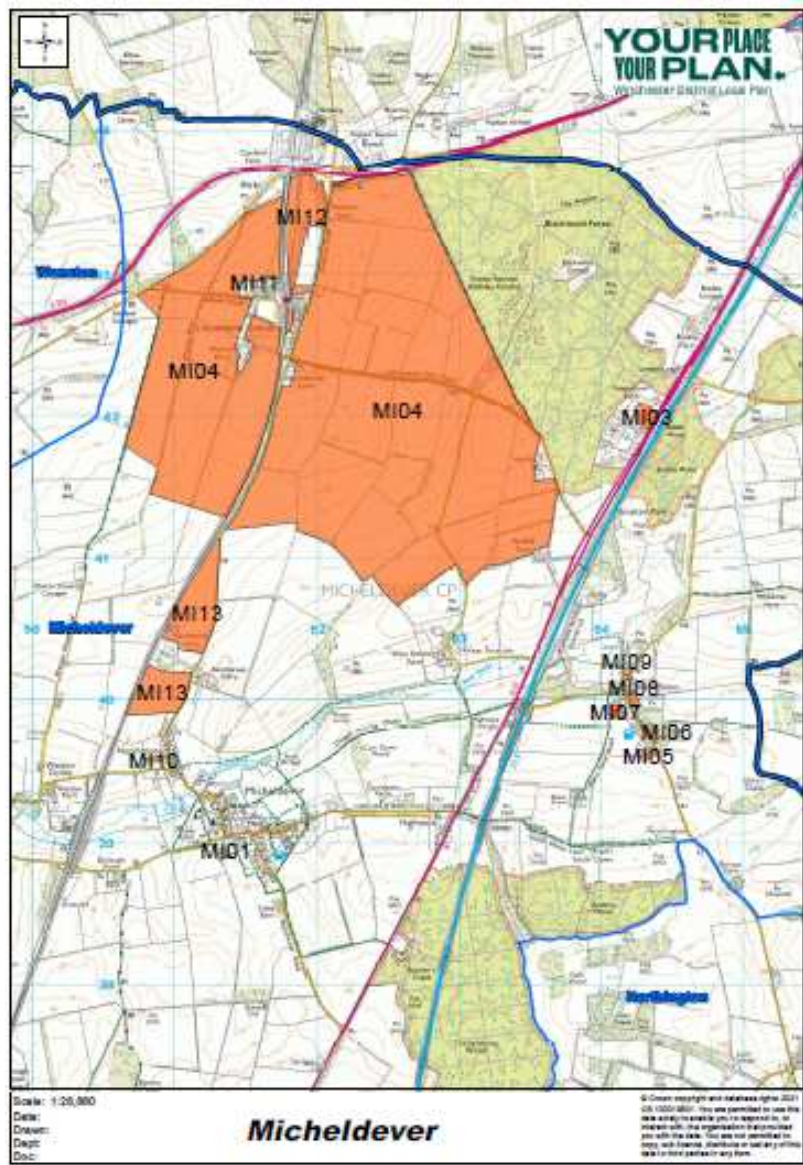
SHELAA Sites – Parishes in the north of the District



WONSTON



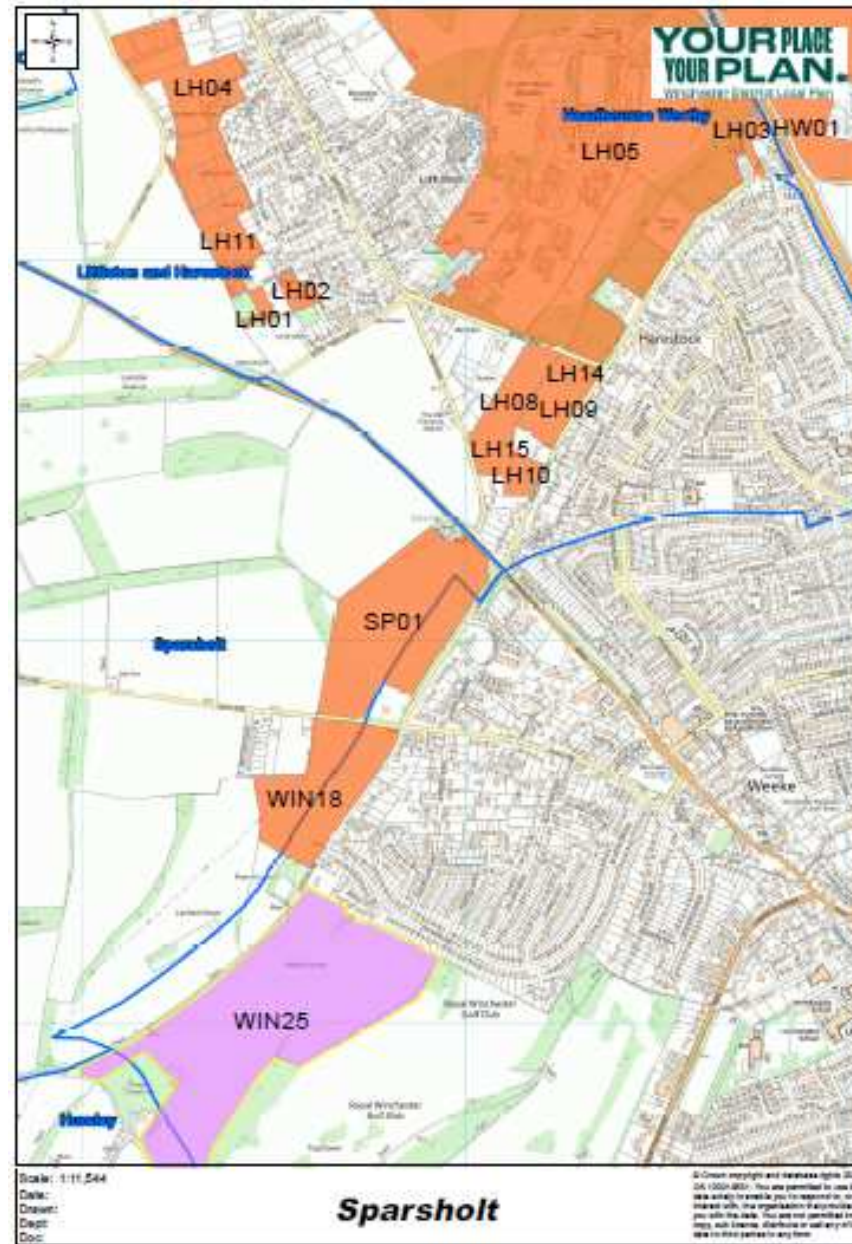
MICHELDEVER



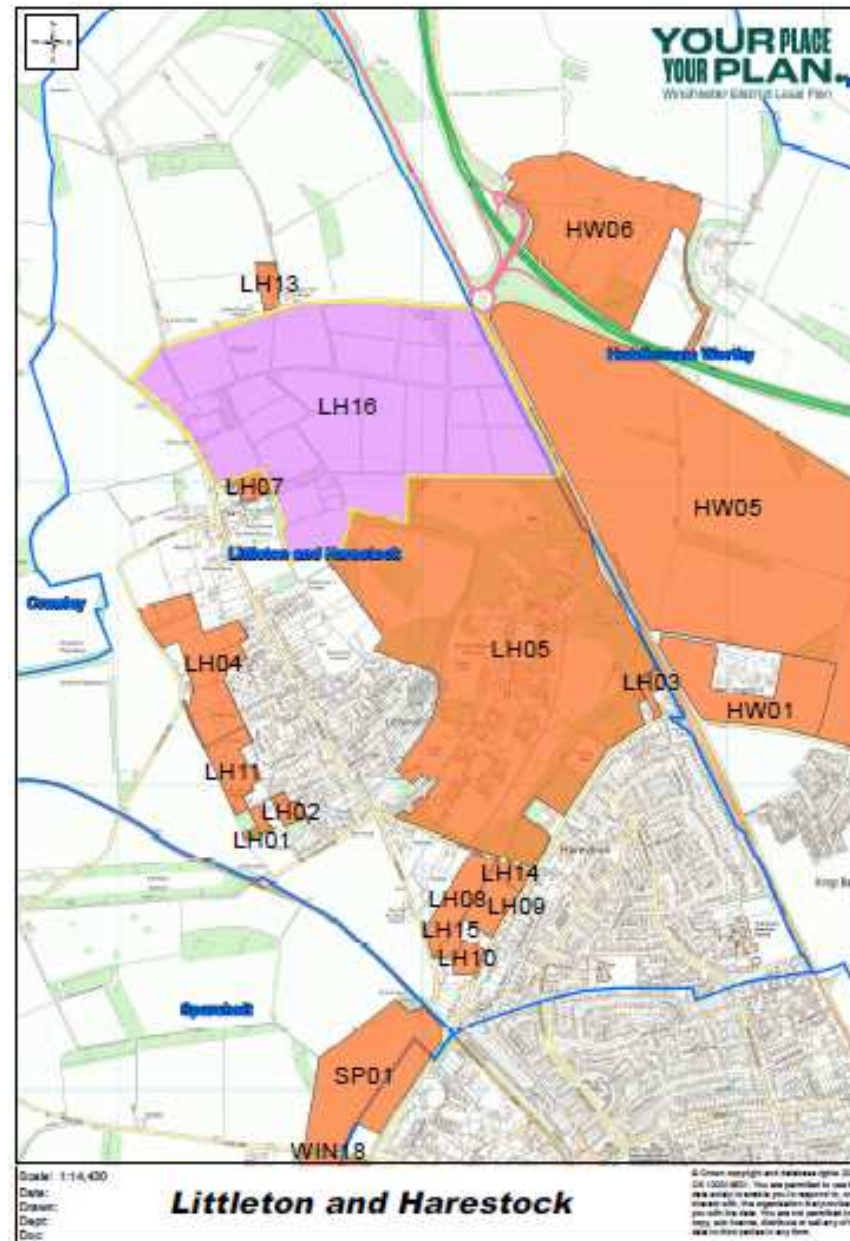
CRAWLEY



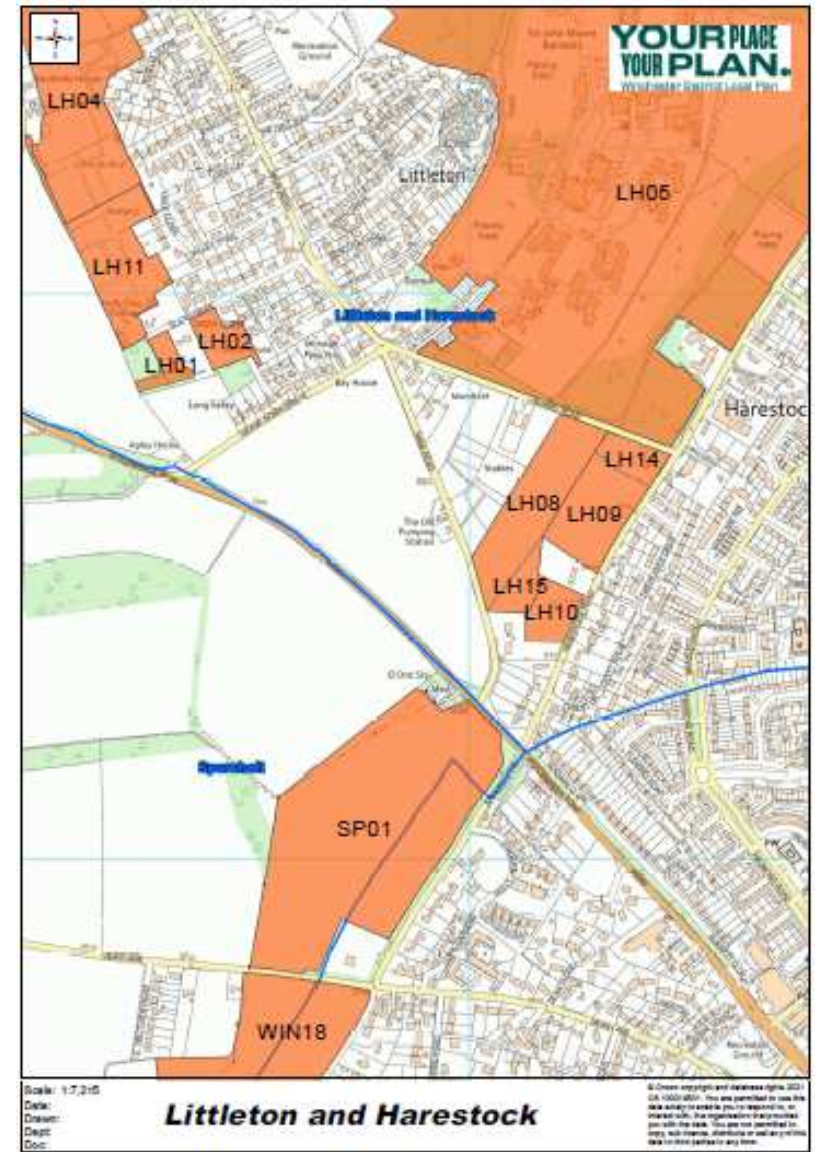
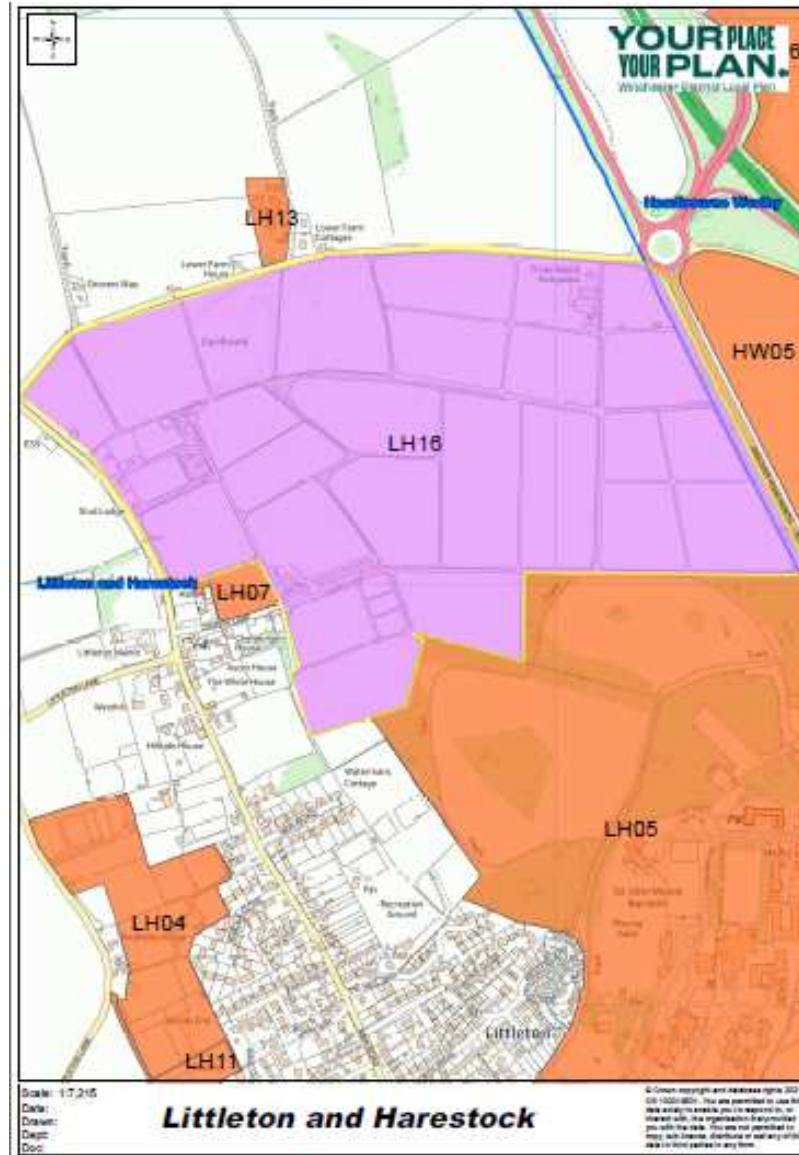
SPARSHOLT



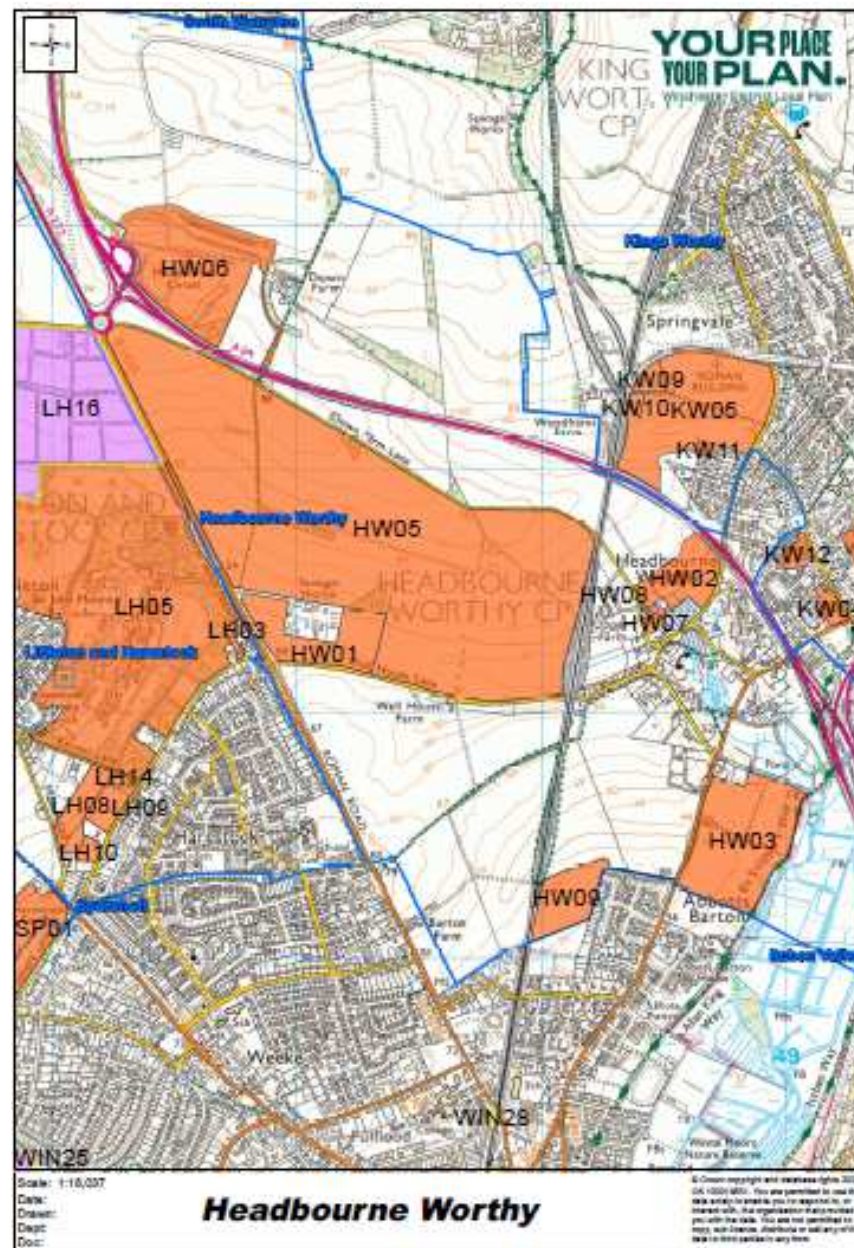
LITTLETON AND HARESTOCK



LITTLETON AND HARESTOCK - detail



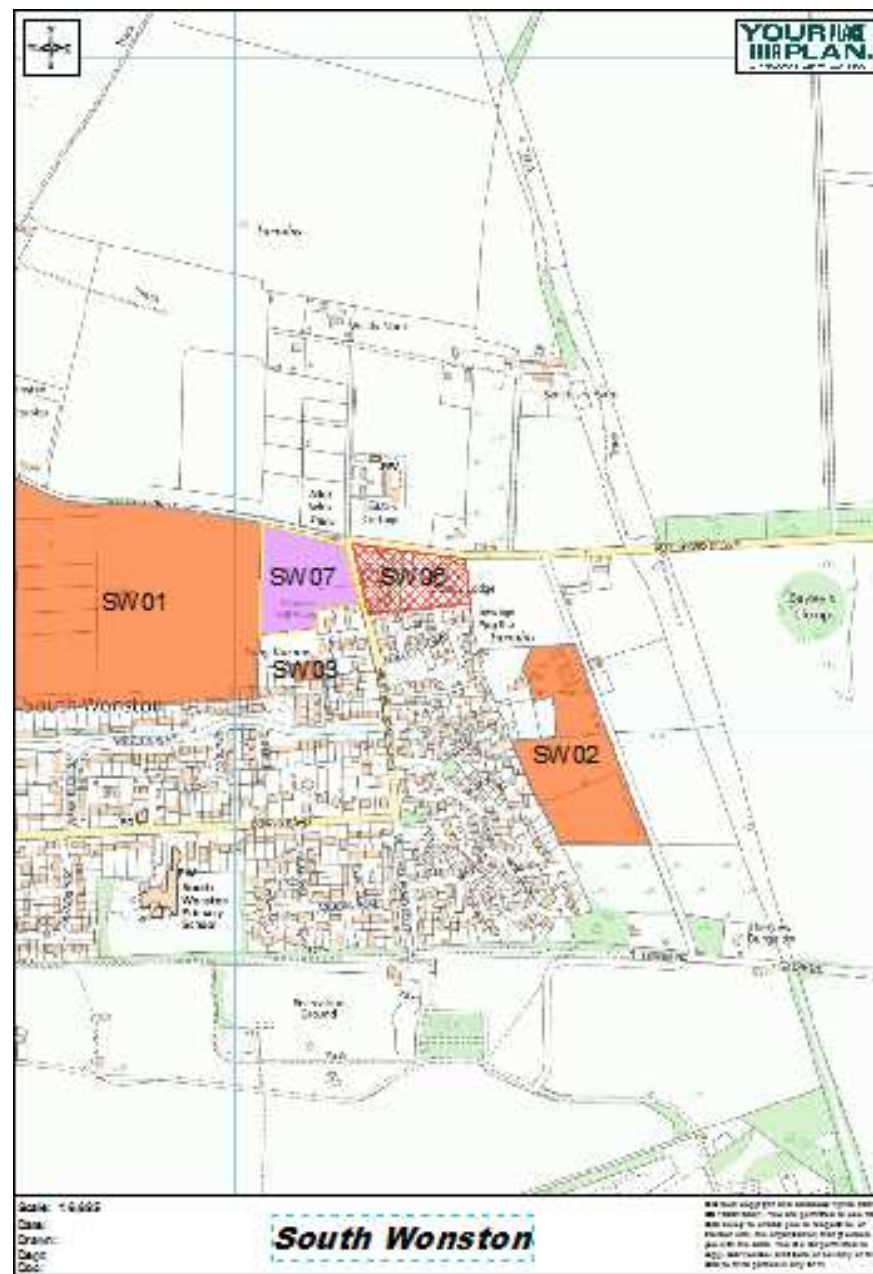
HEADBOURNE WORTHY



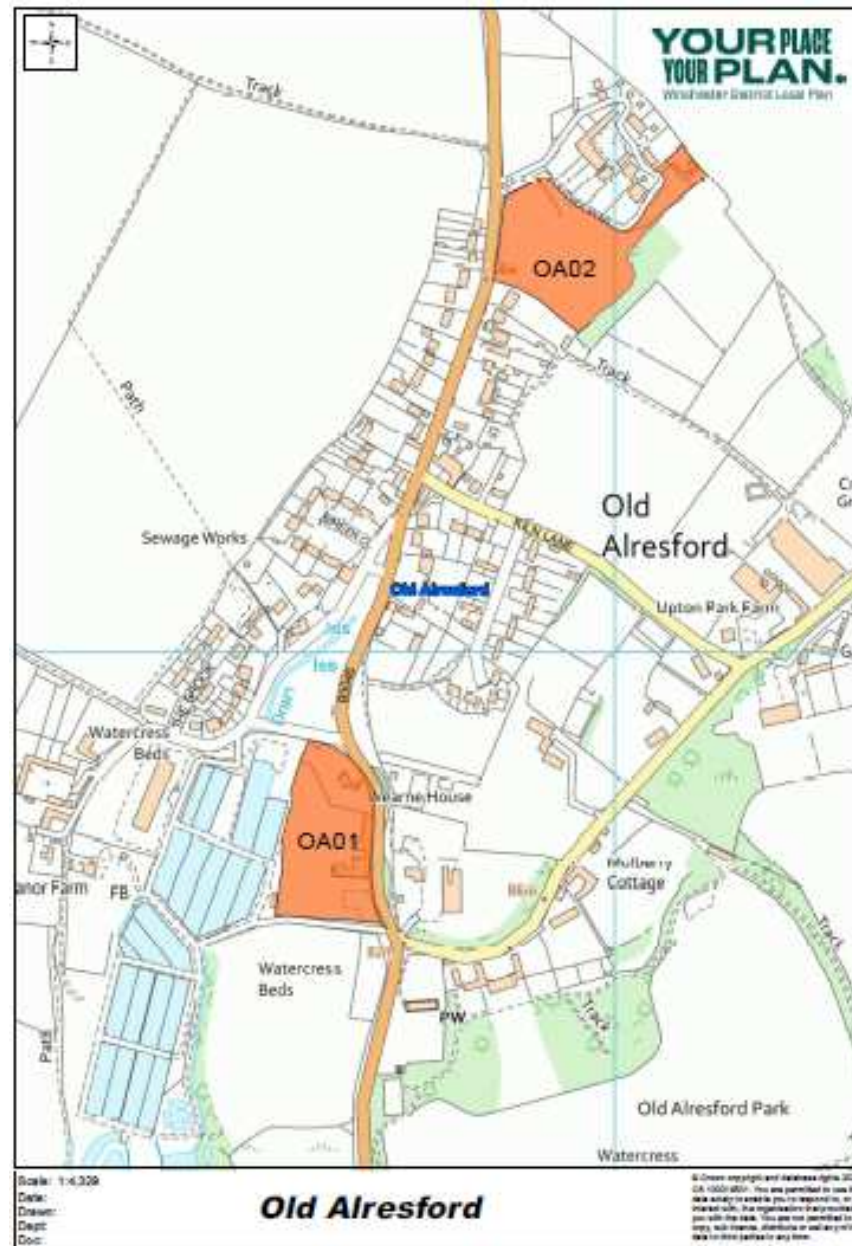
SOUTH WONSTON



SOUTH WONSTON



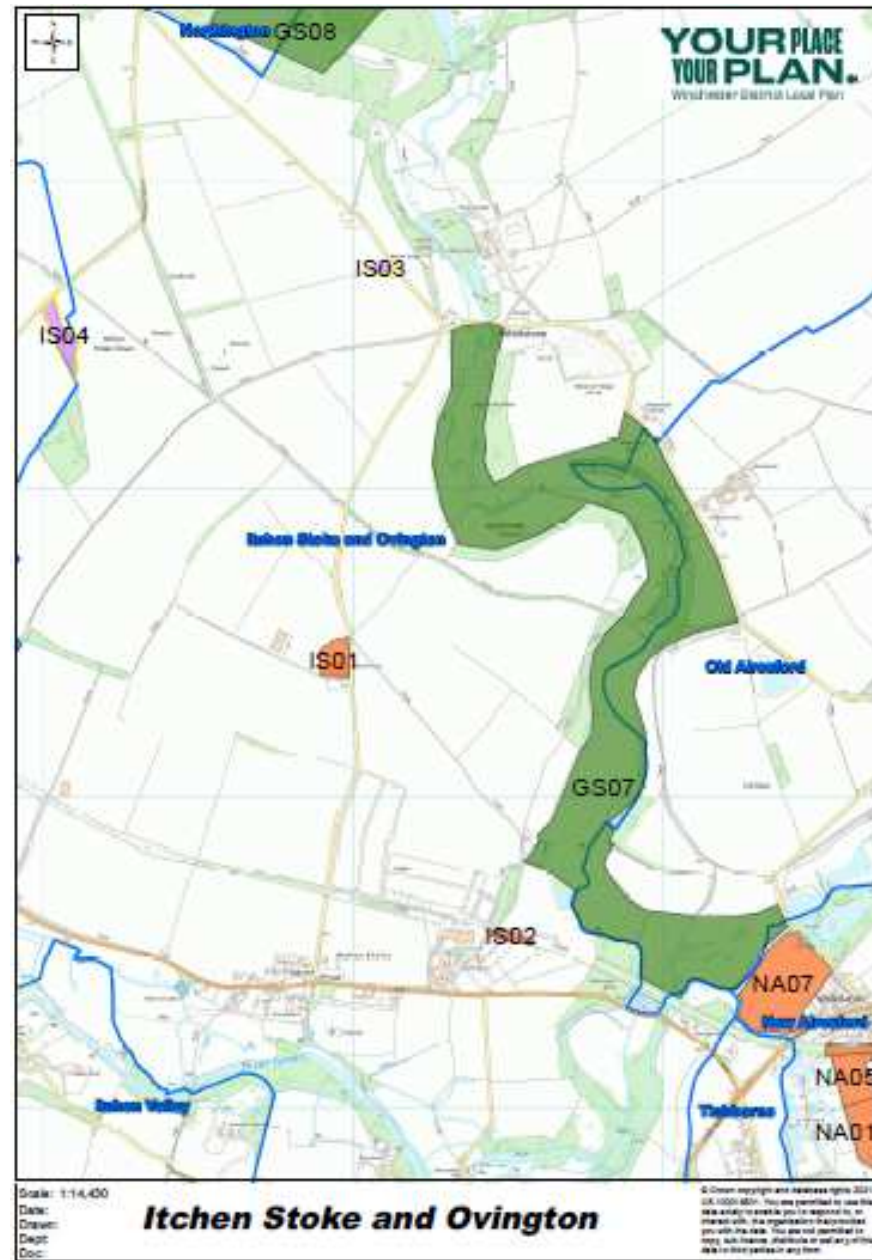
OLD ALRESFORD



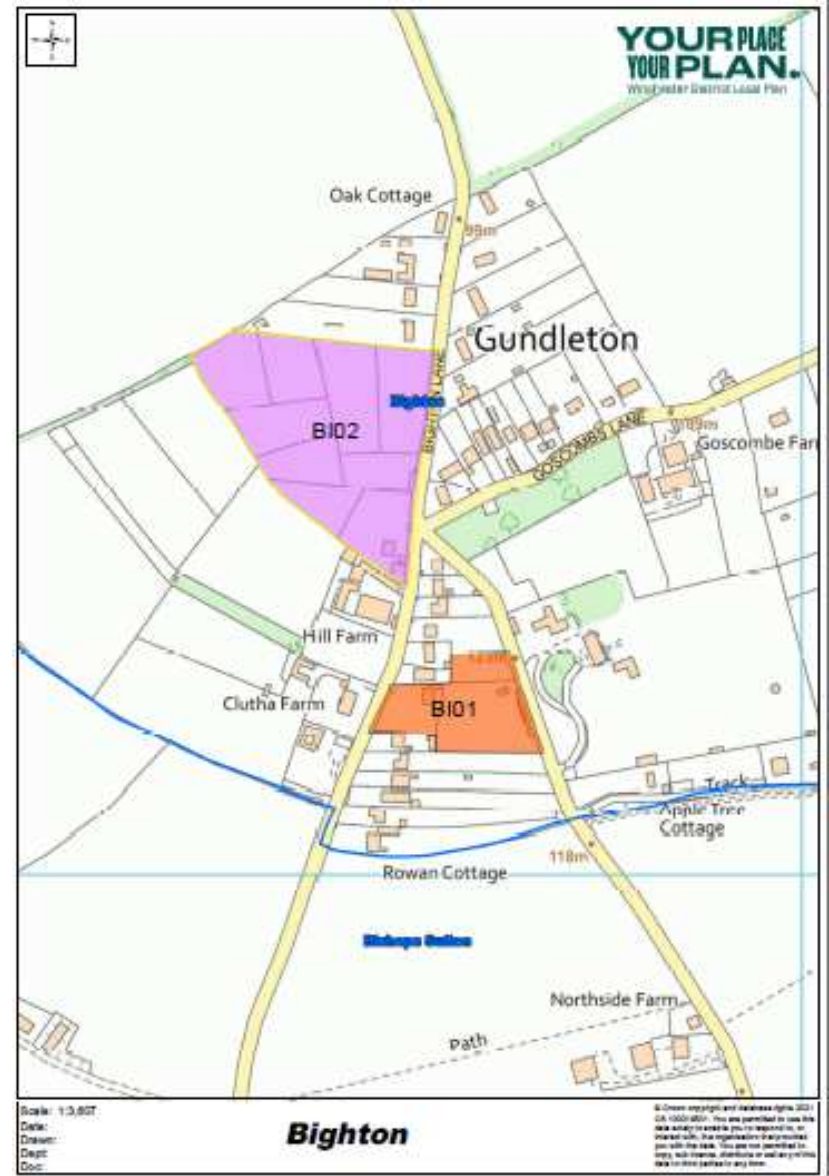
NORTHINGTON



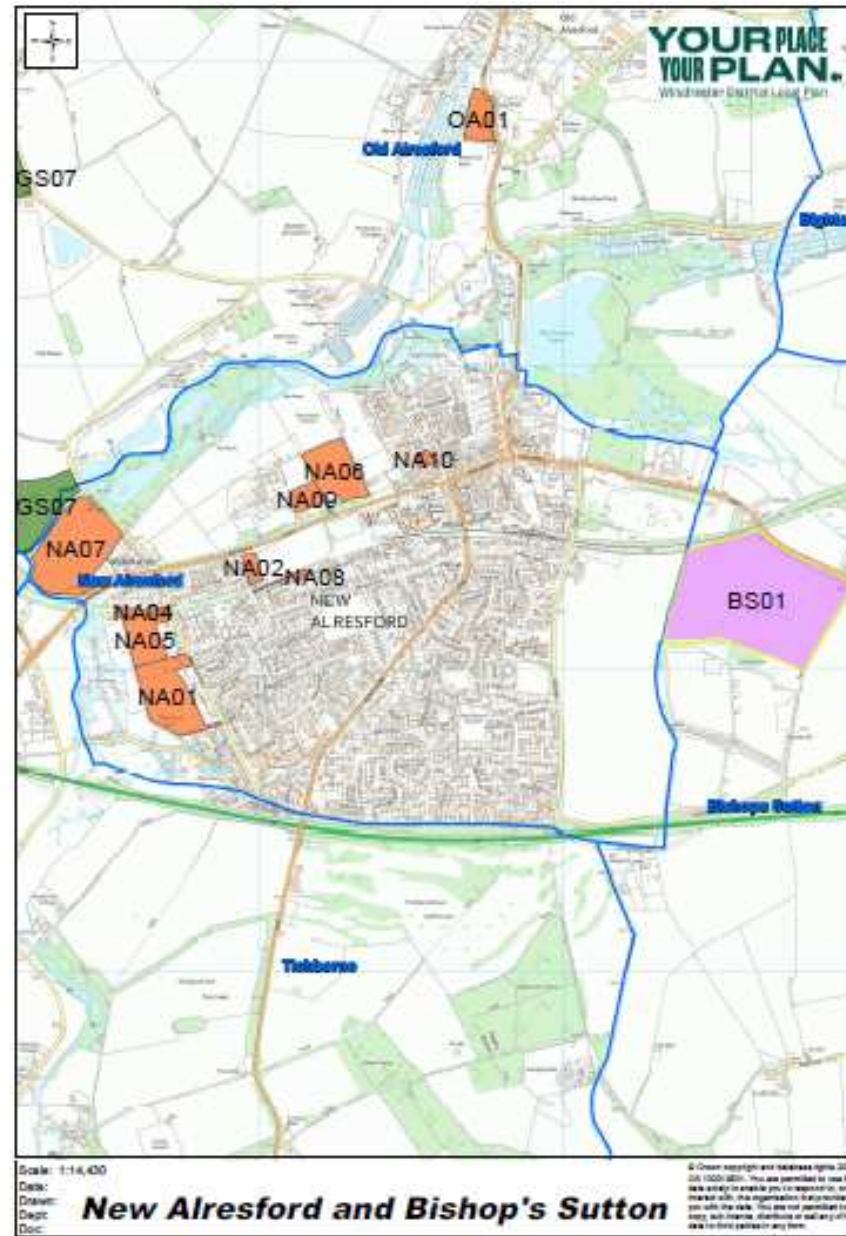
ITCHEN STOKE AND OVINGTON



BIGHTON



NEW ALRESFORD AND BISHOP'S SUTTON



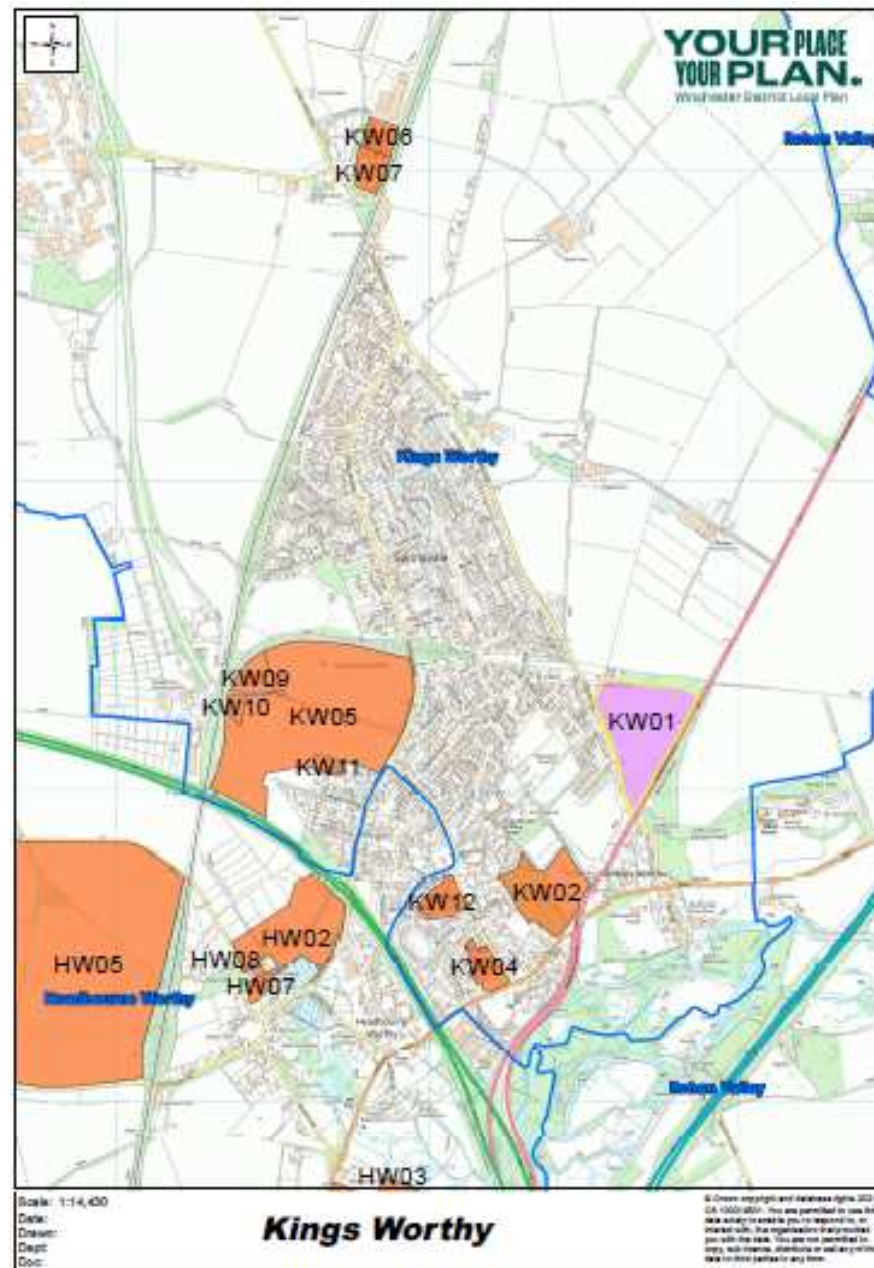
ITCHEN VALLEY



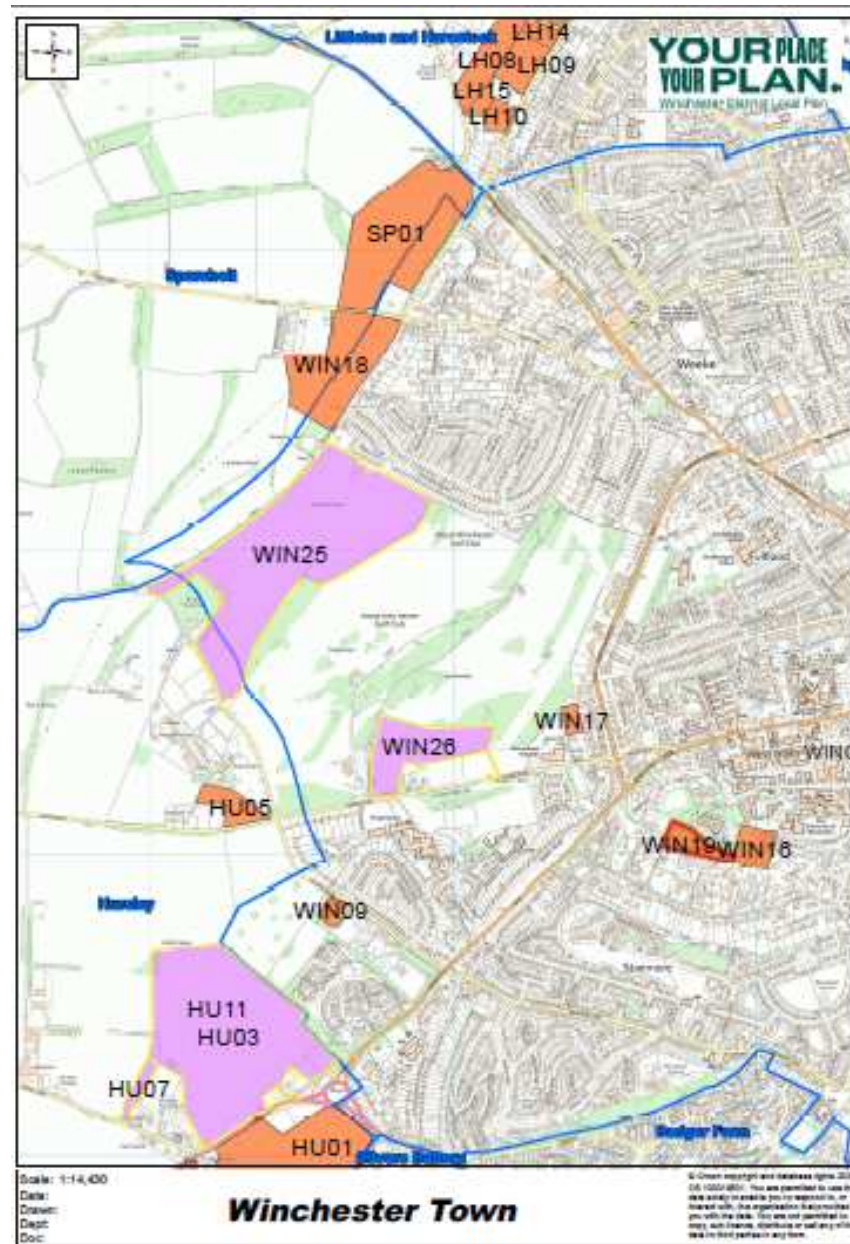
SHELAA Sites – Winchester and Surrounding Parishes



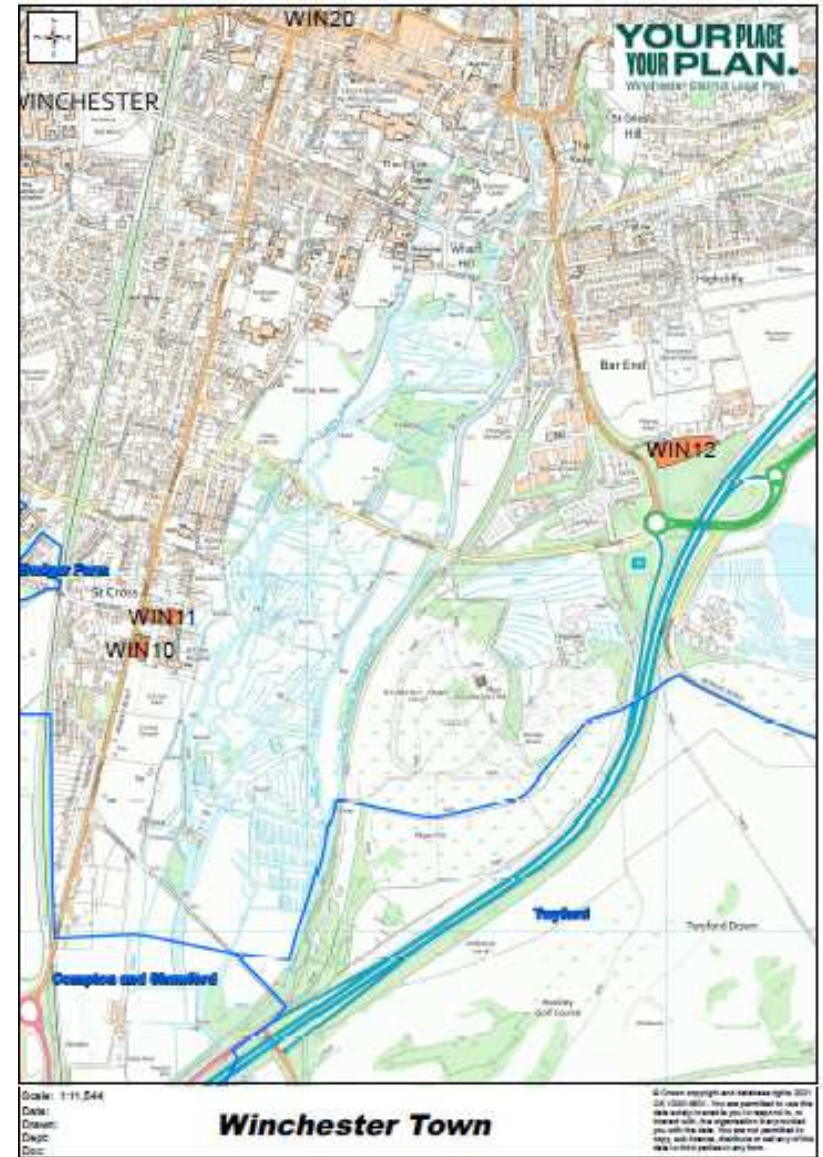
KINGS WORTHY



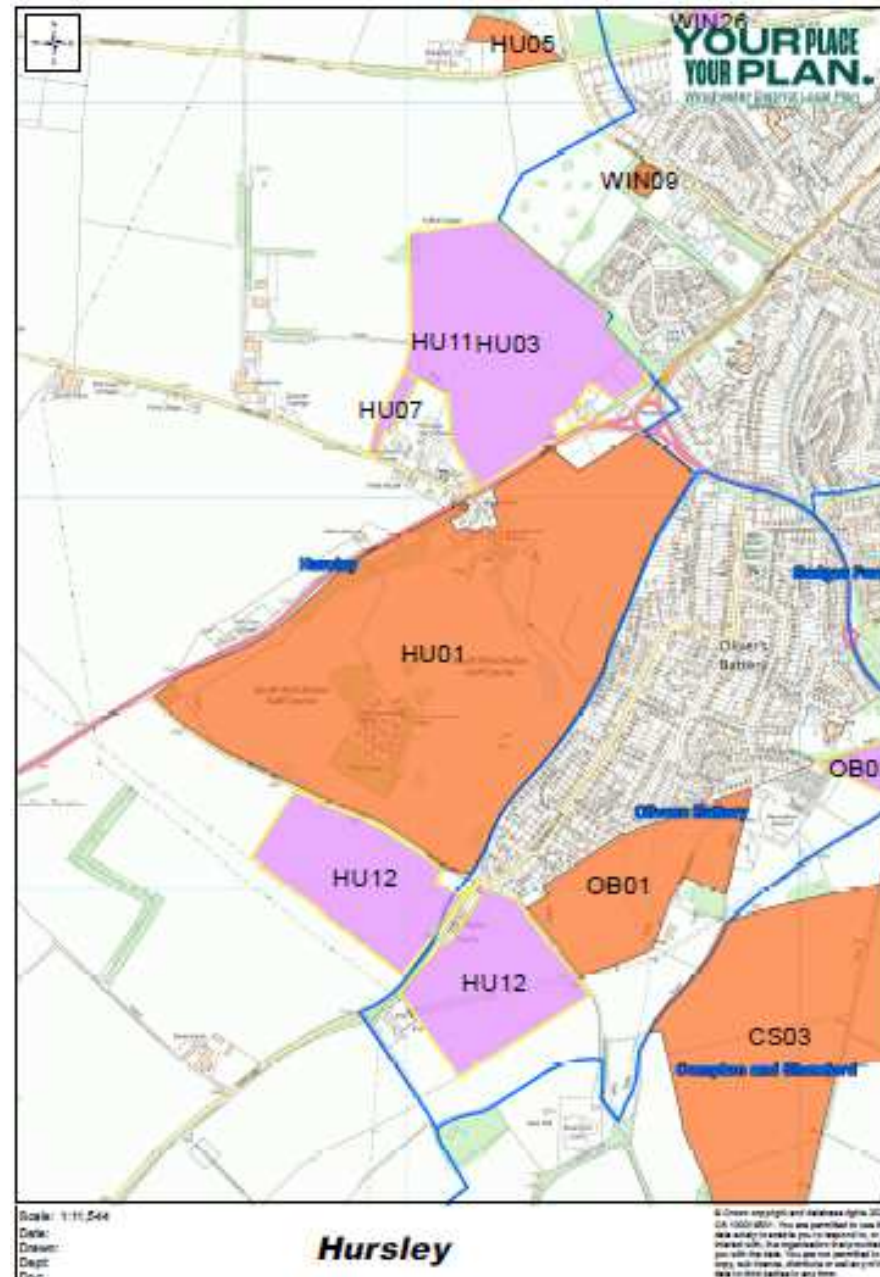
WINCHESTER TOWN



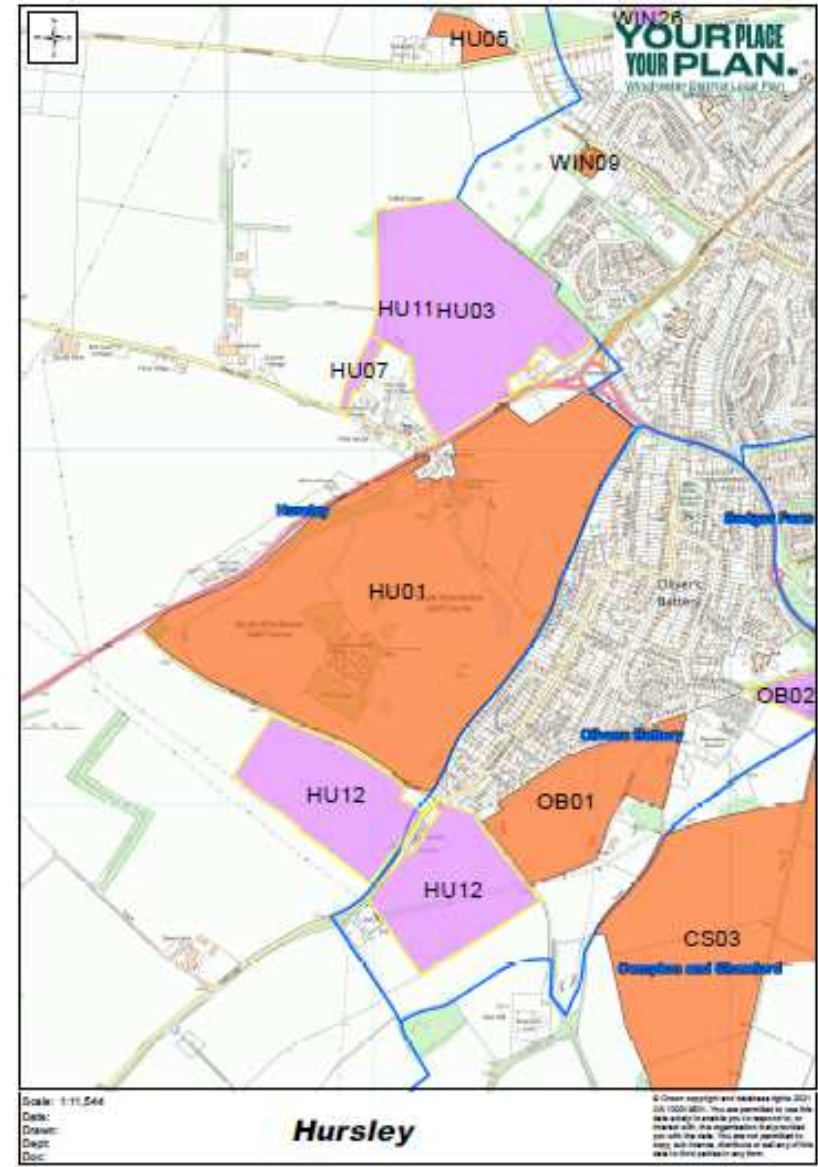
WINCHESTER TOWN- detail



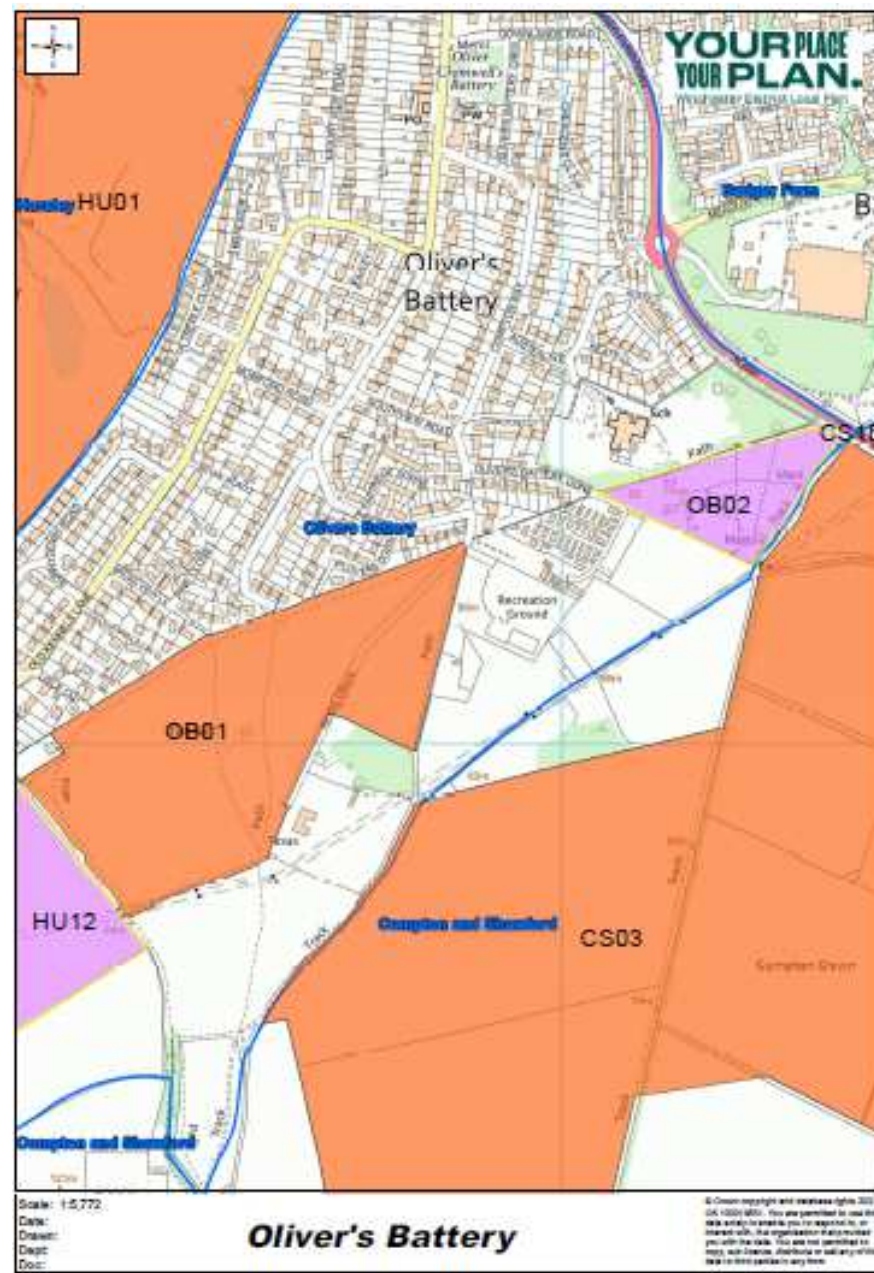
HURSLEY



HURSLEY - detail



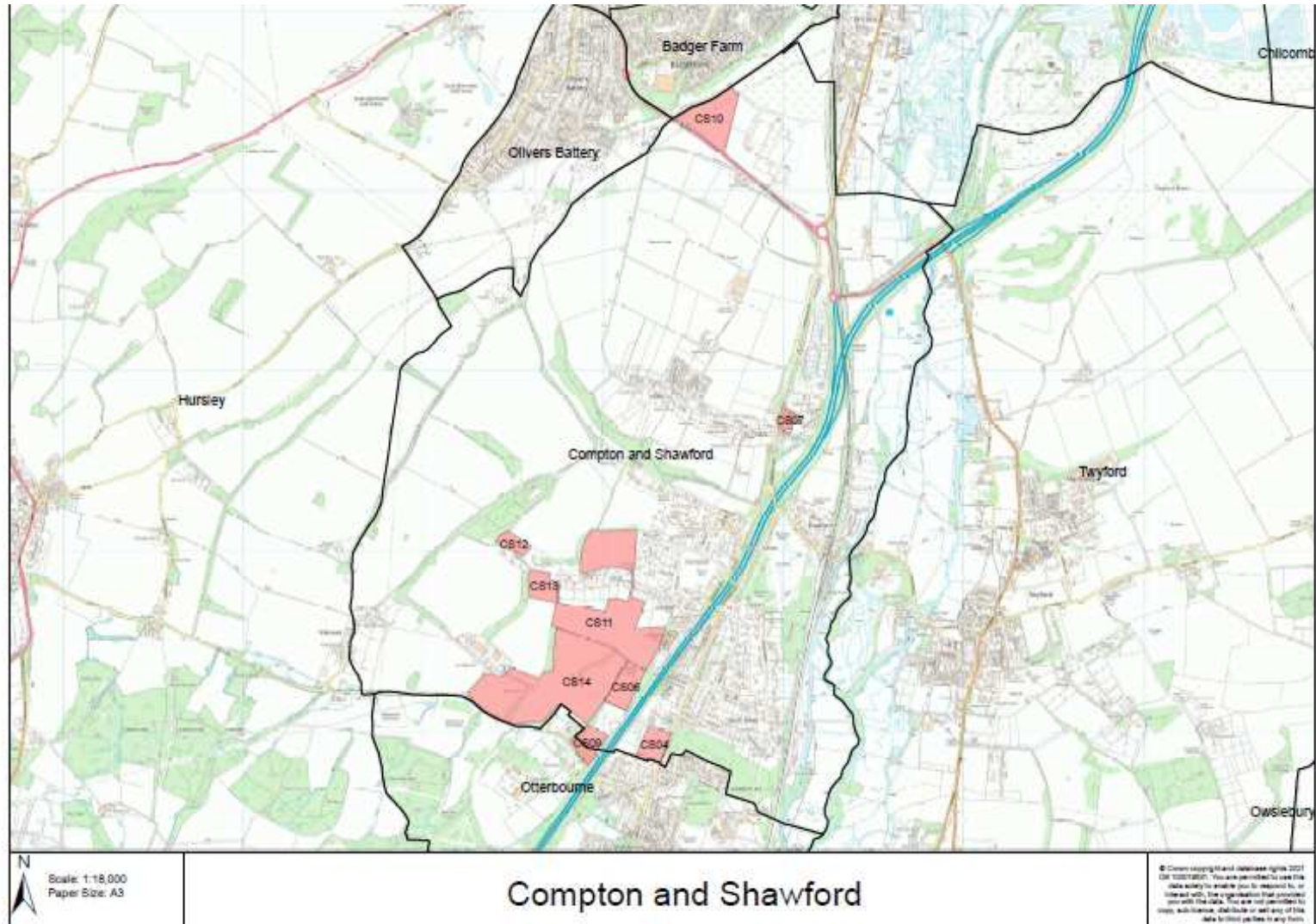
OLIVER'S BATTERY



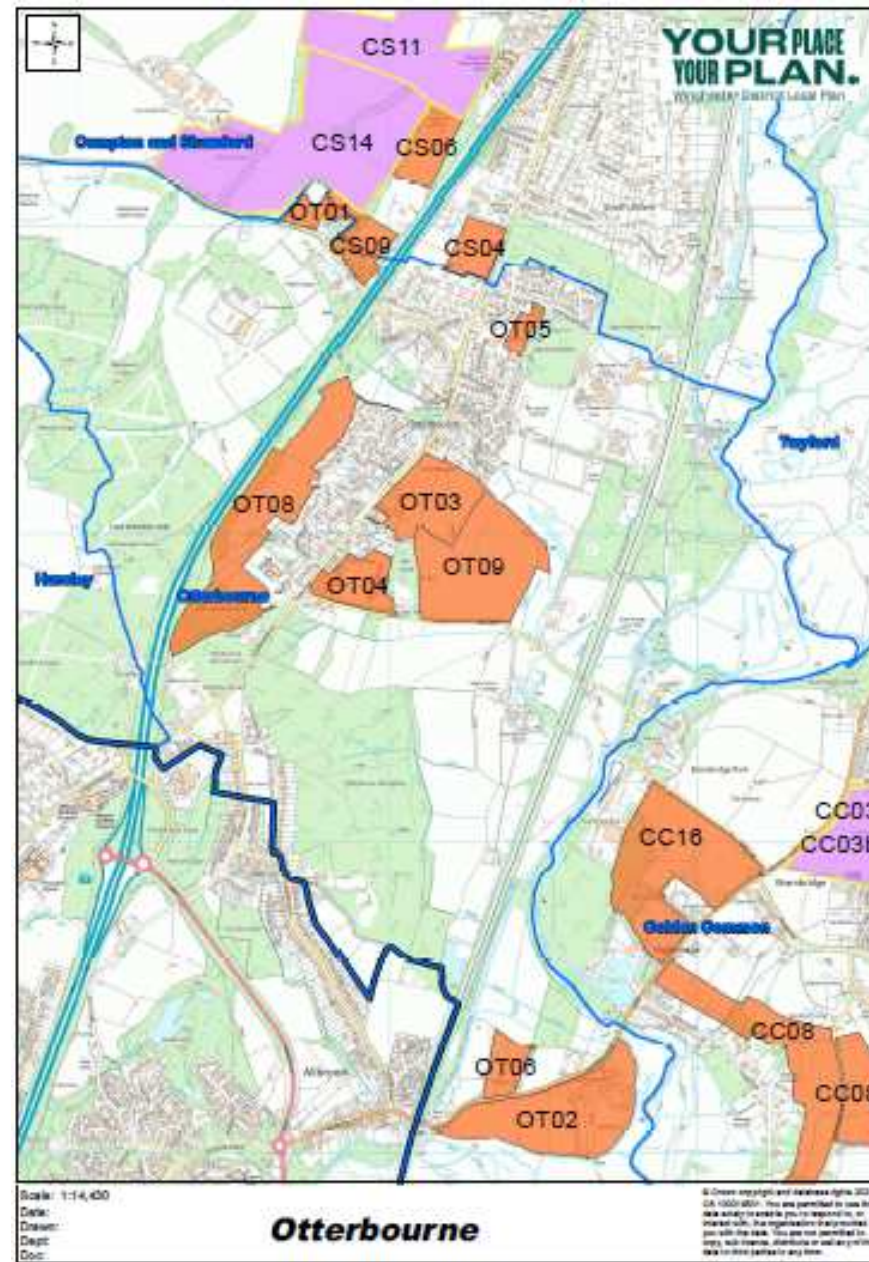
SHELAA Sites – Parishes in the south of the District



COMPTON AND SHAWFORD



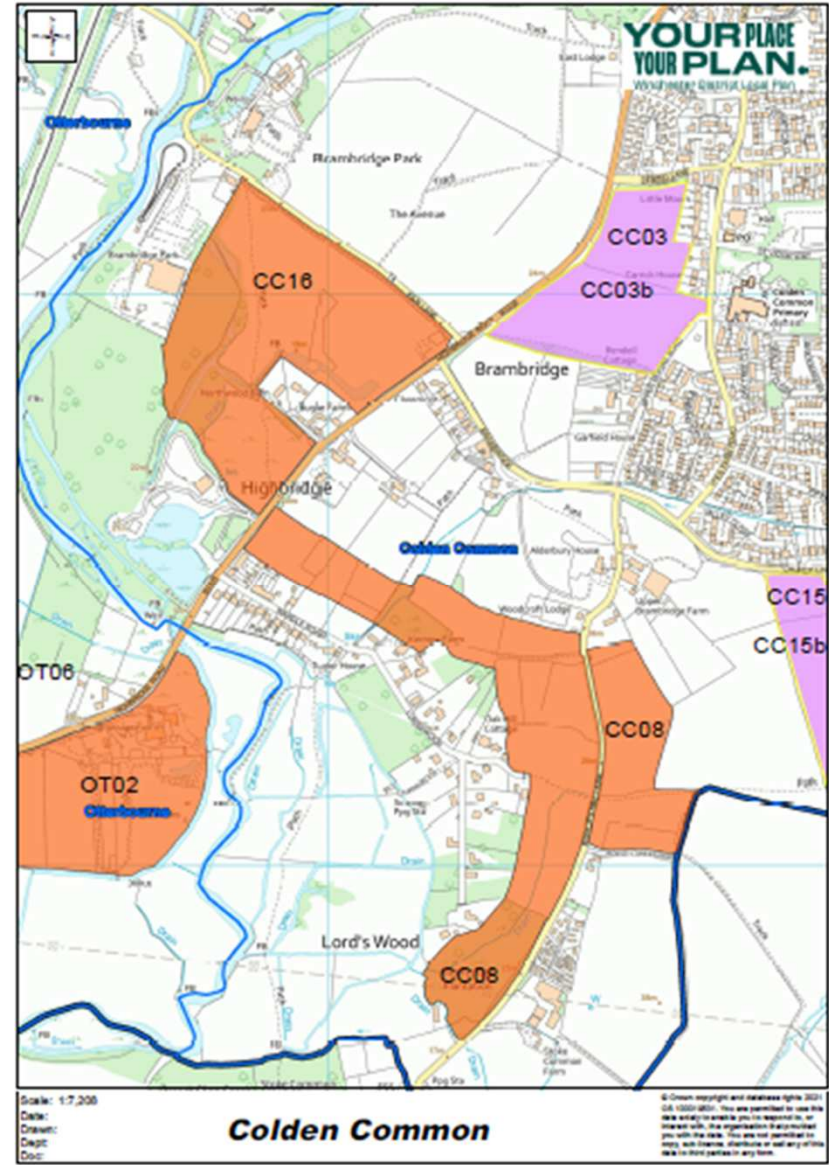
OTTERBOURNE



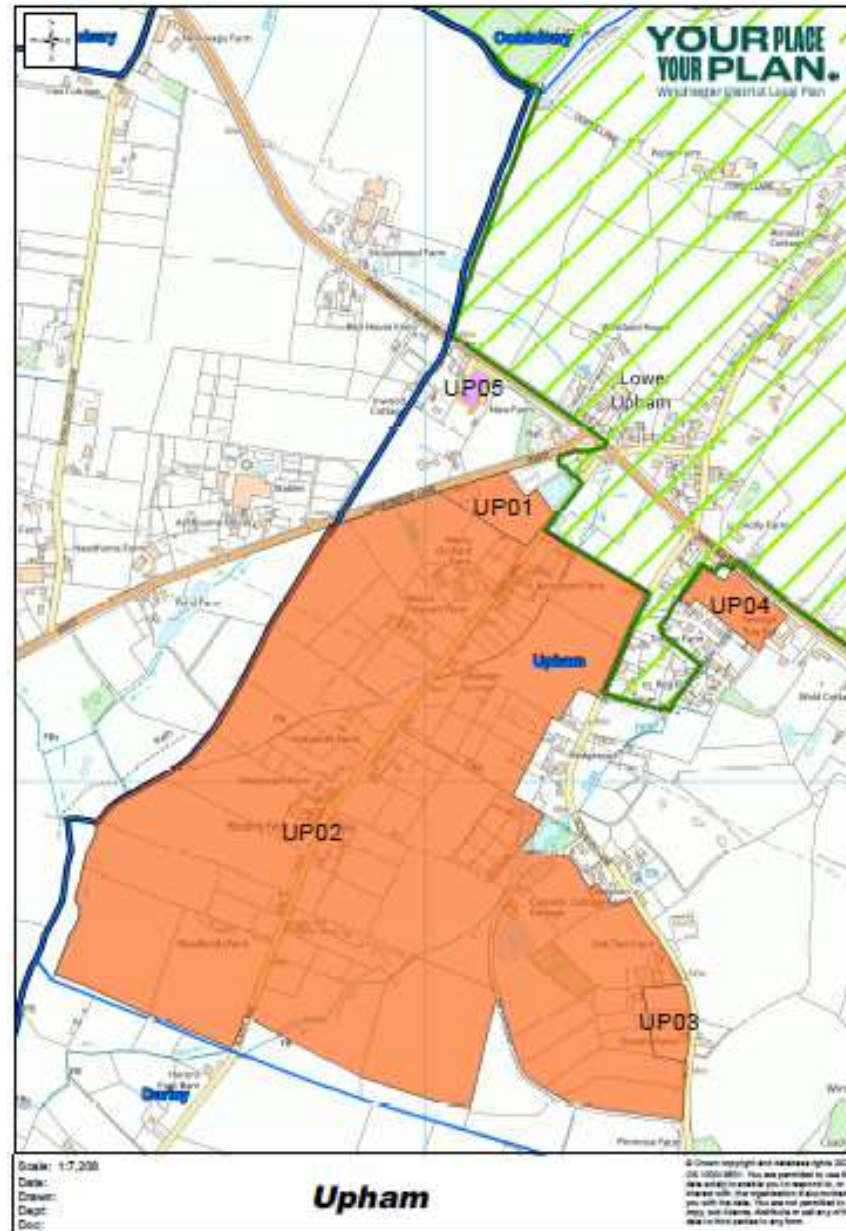
COLDEN COMMON



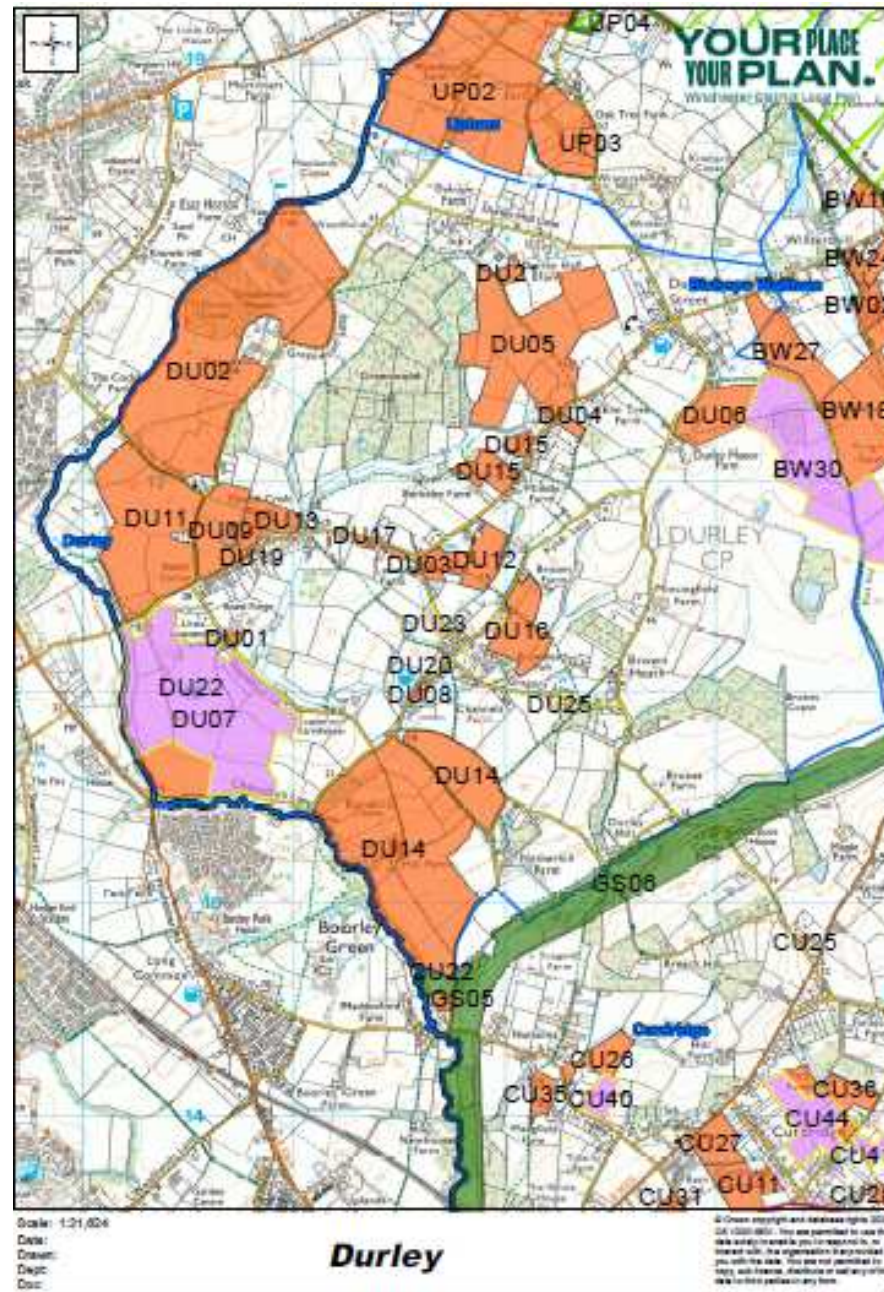
COLDEN COMMON – detail



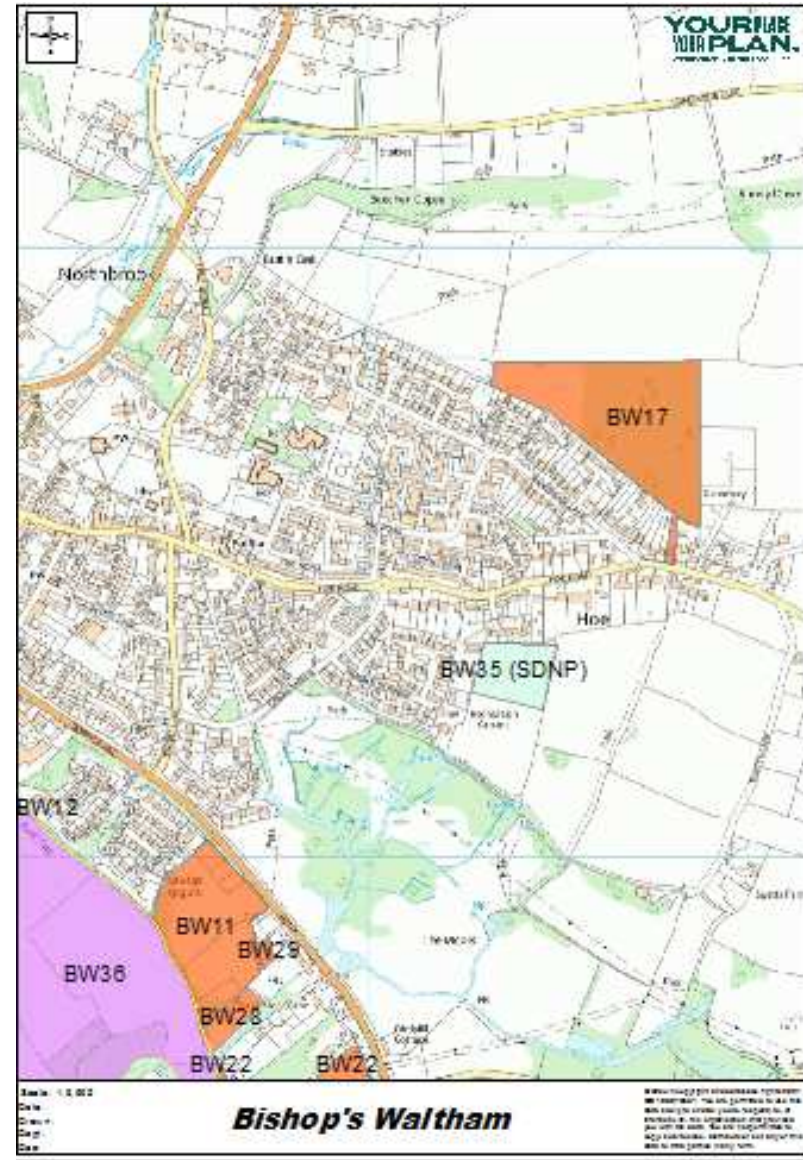
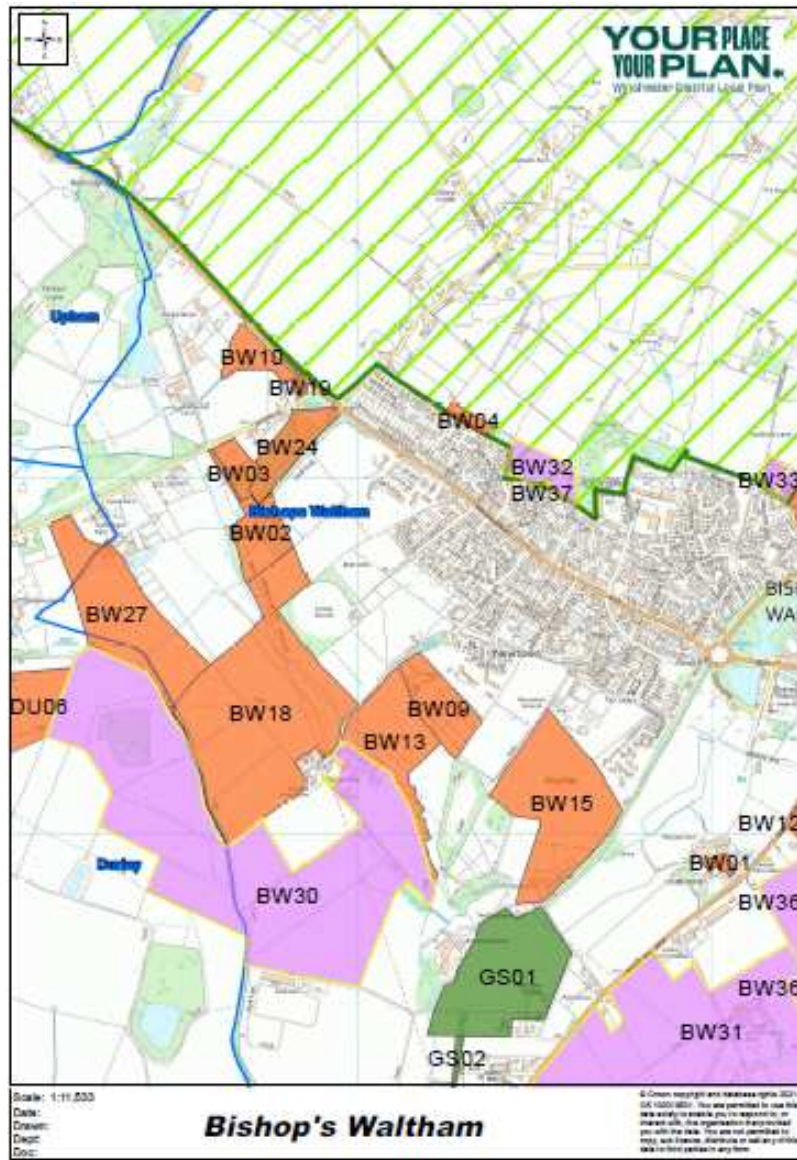
UPHAM



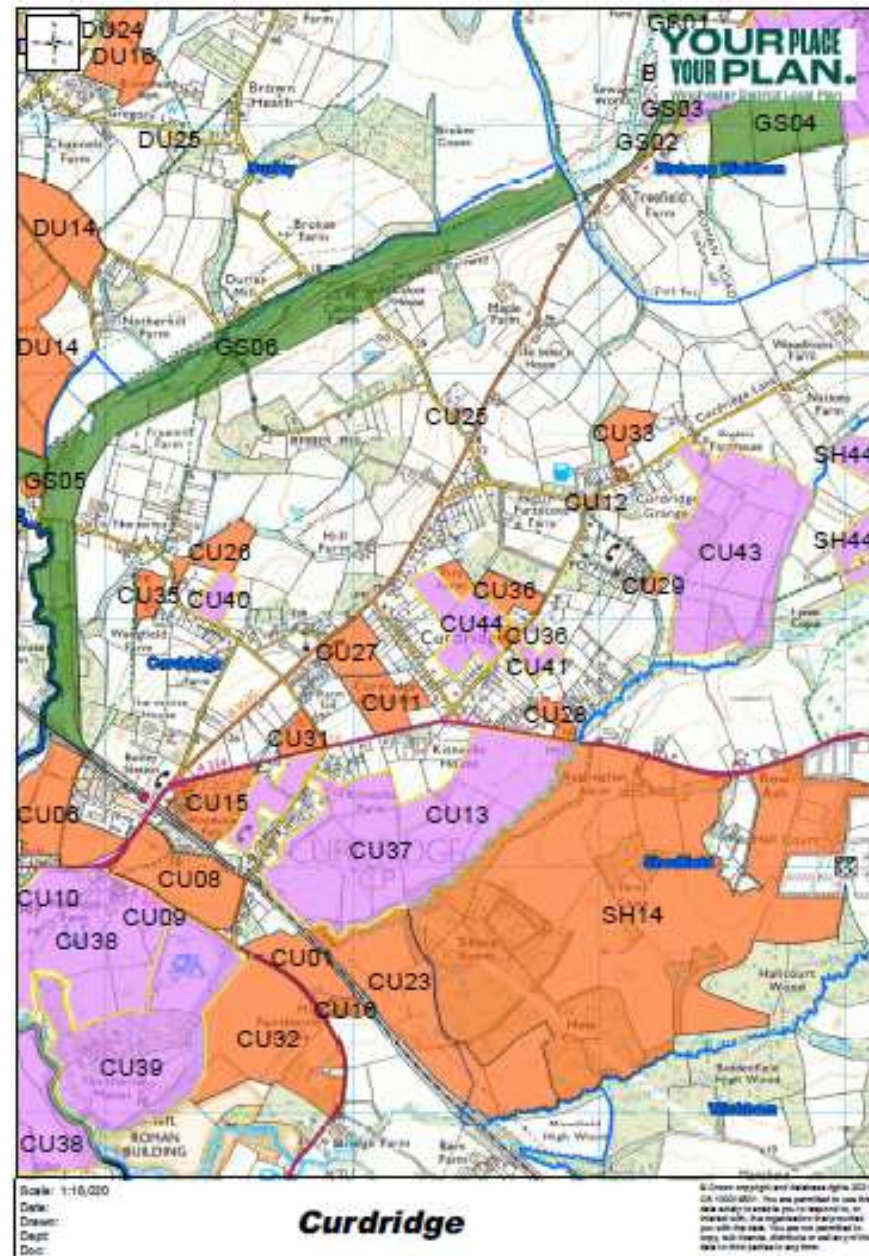
DURLEY



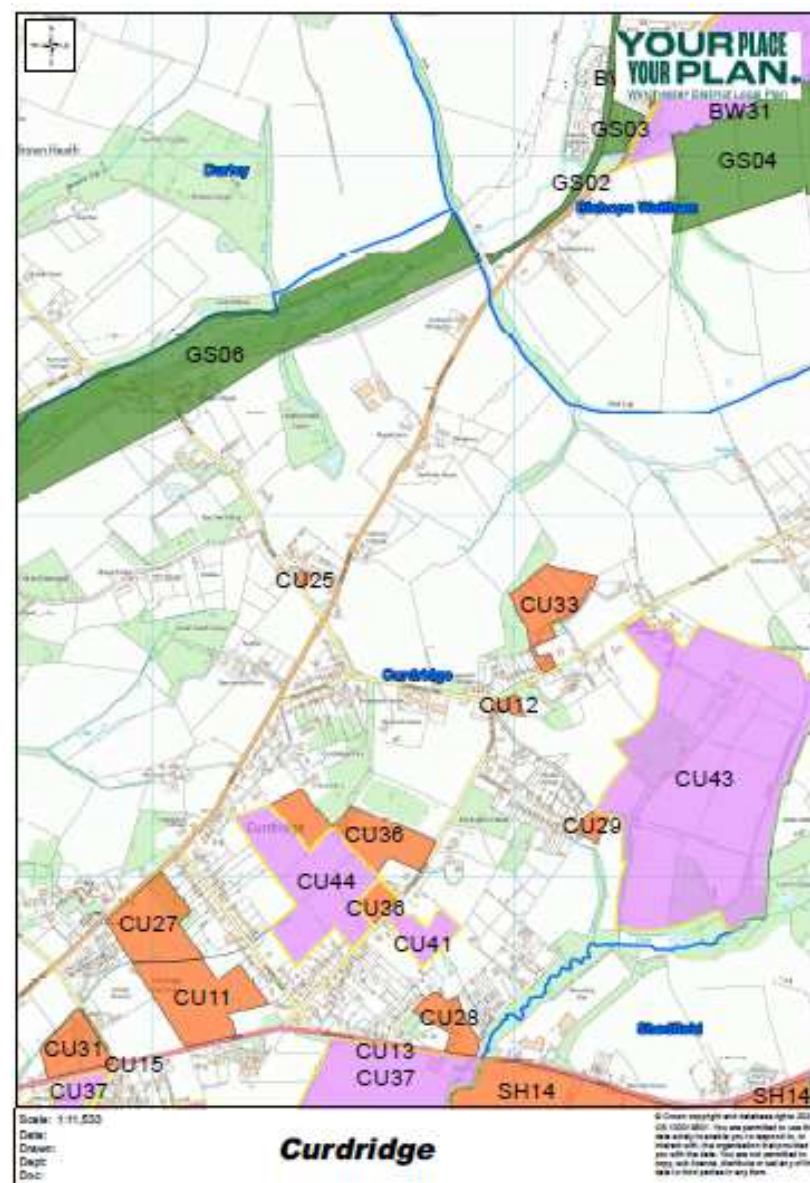
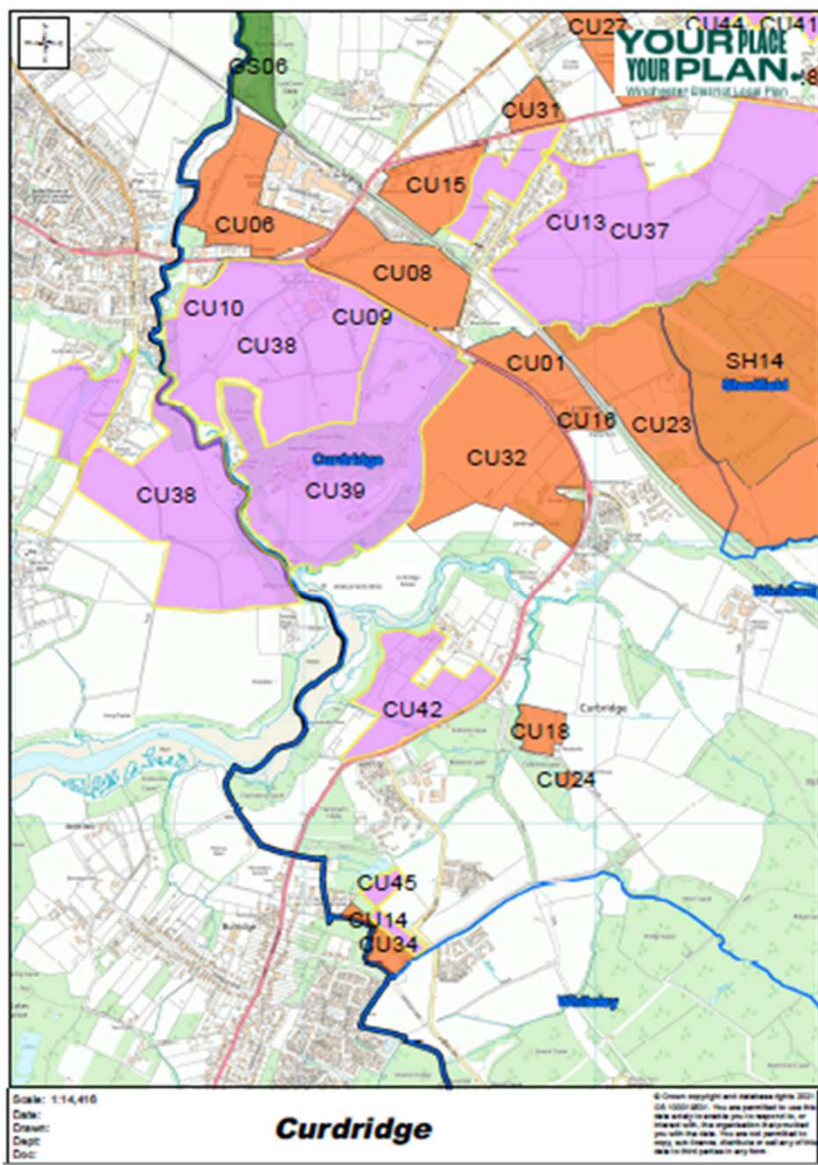
BISHOP'S WALTHAM



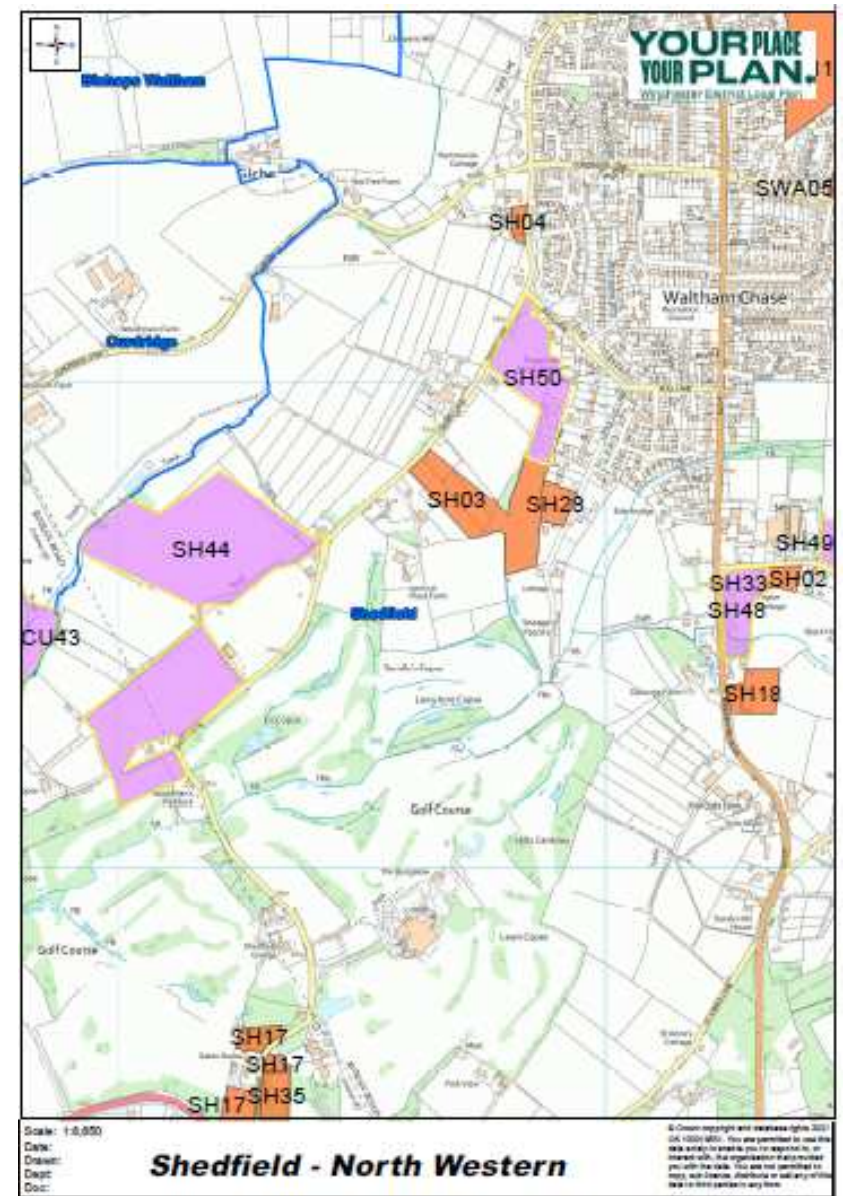
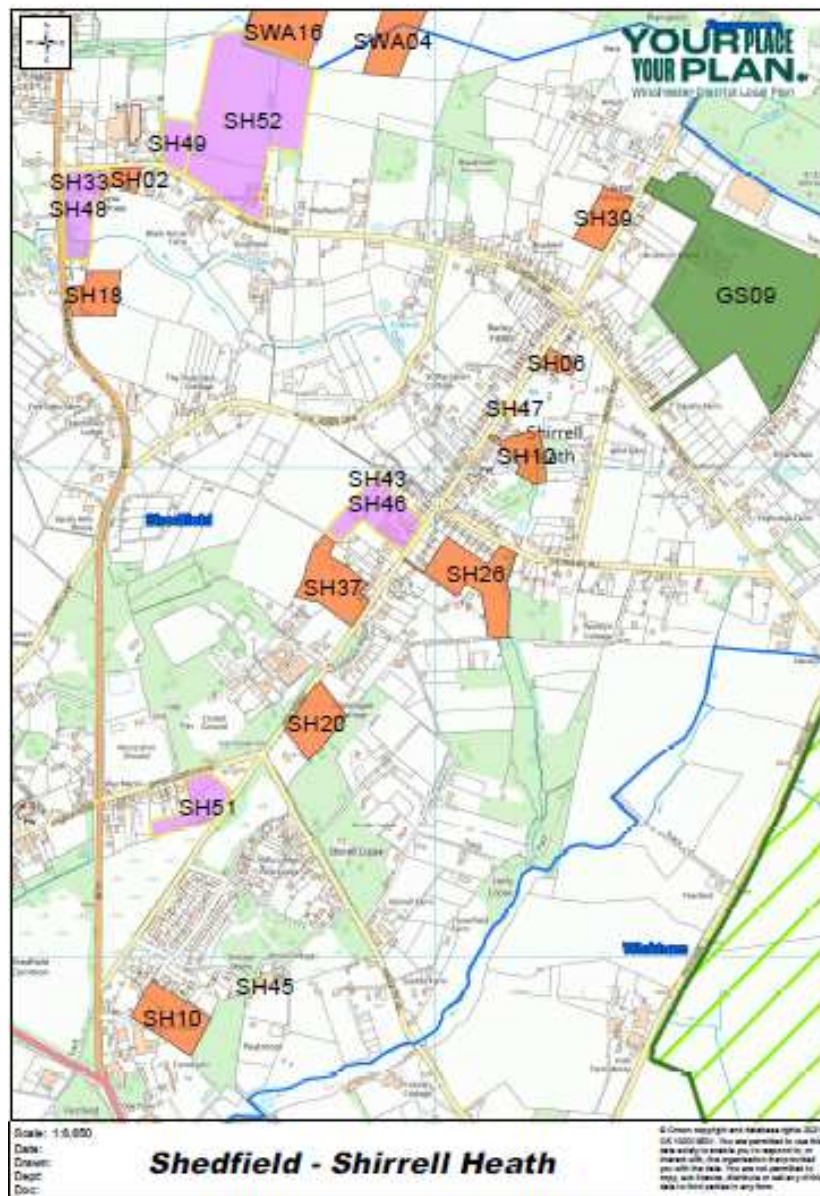
CURDRIDGE



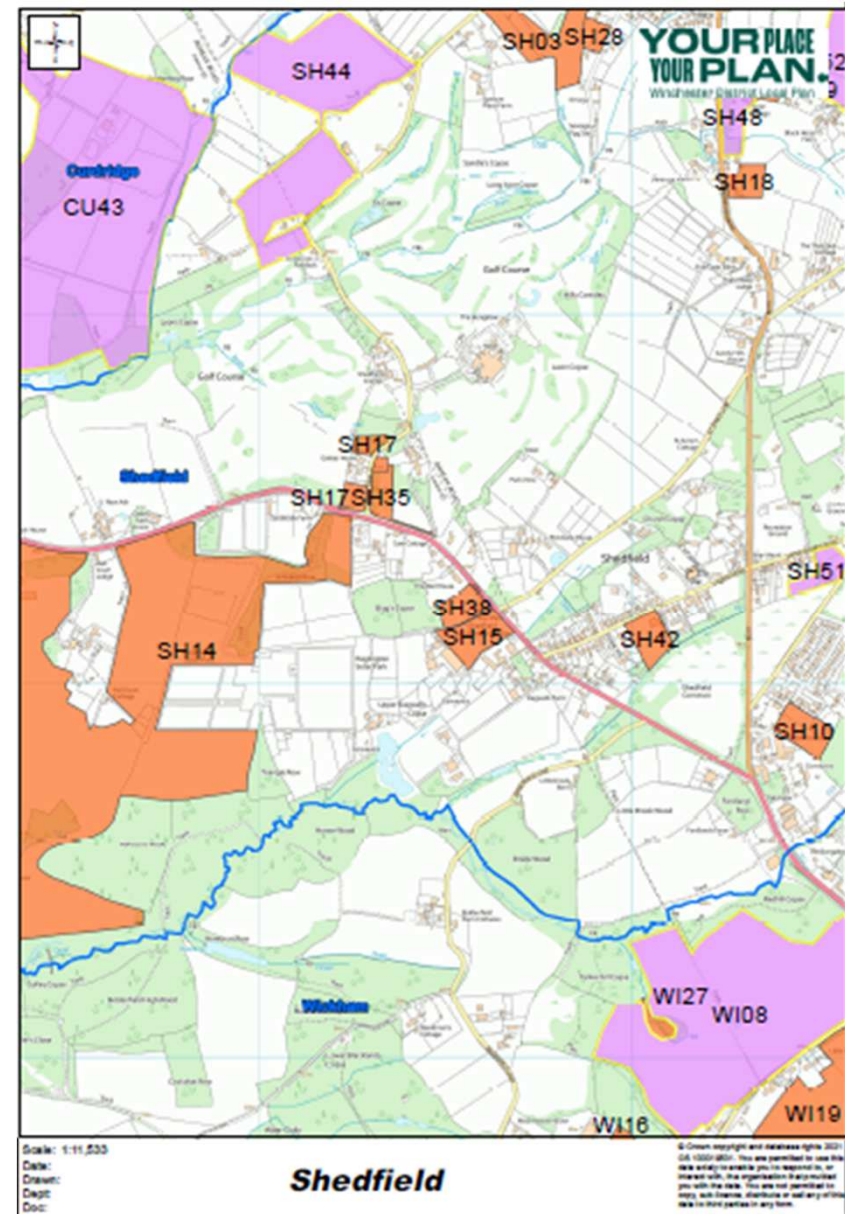
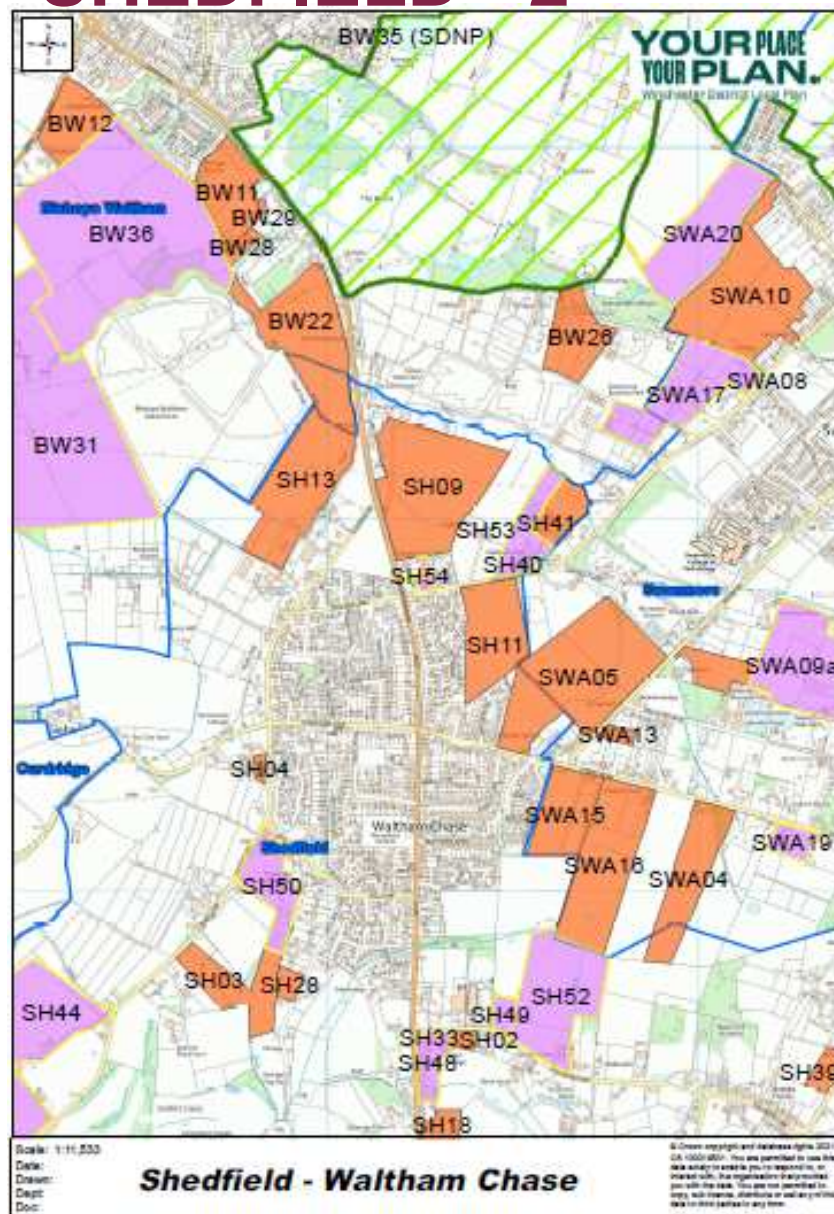
CURDRIDGE - detail



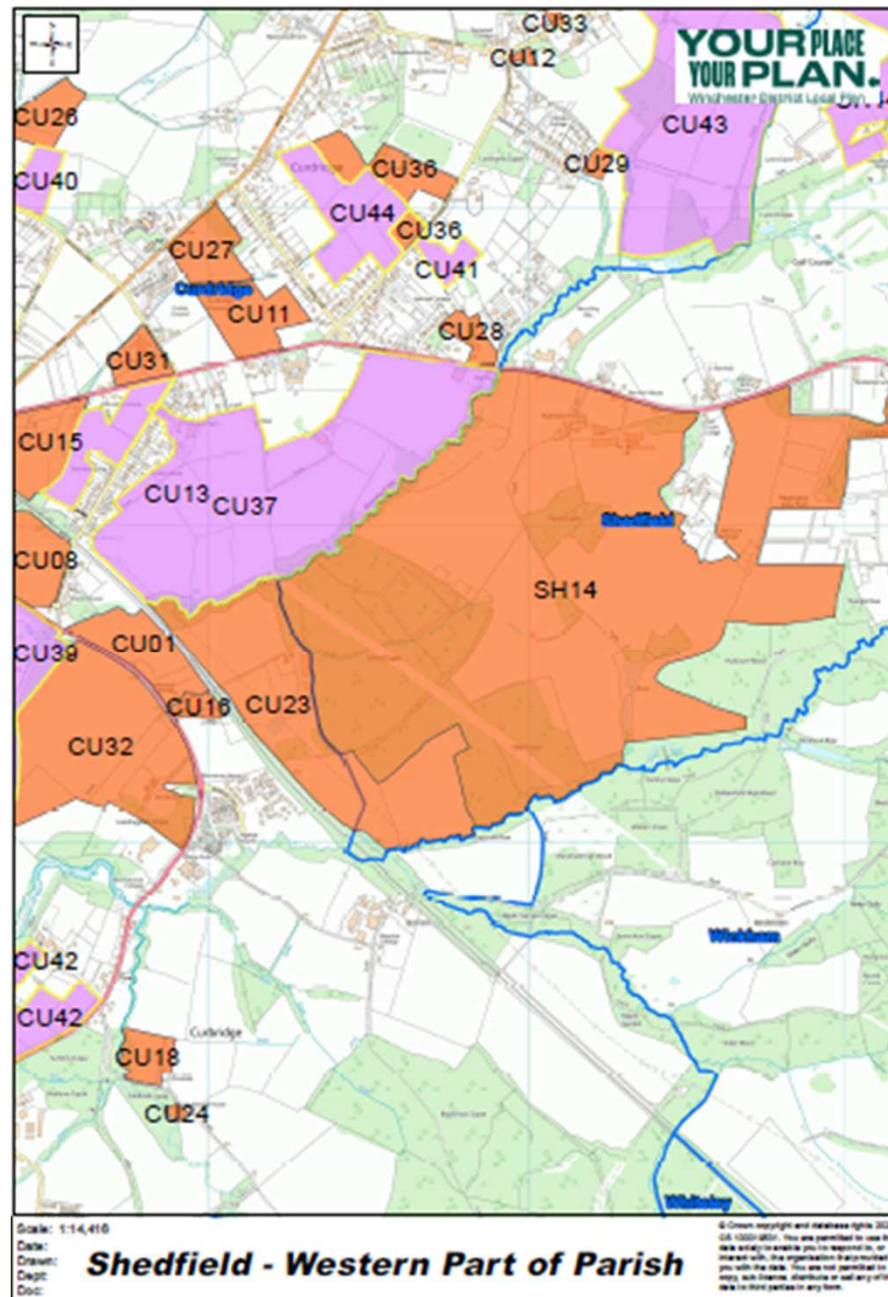
SHEDFIELD - 1



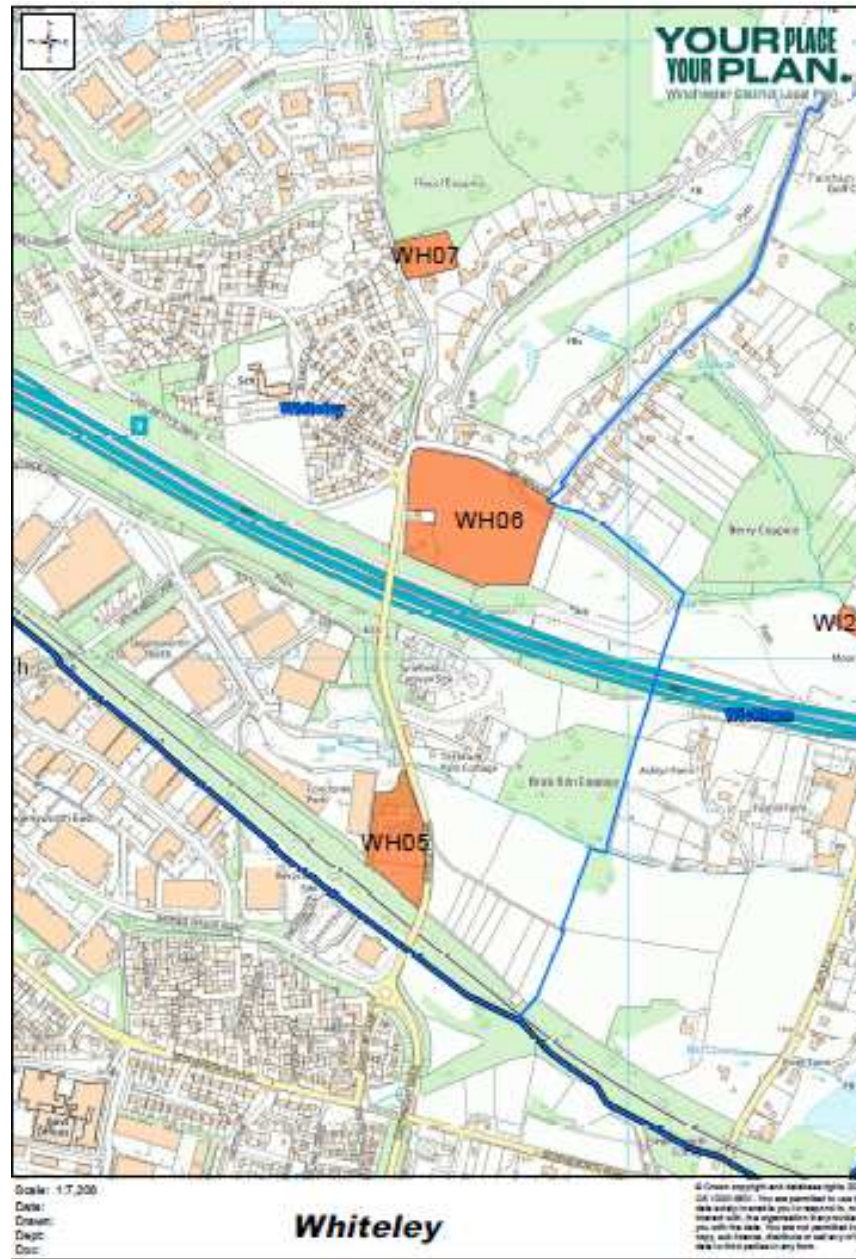
SHEDFIELD - 2



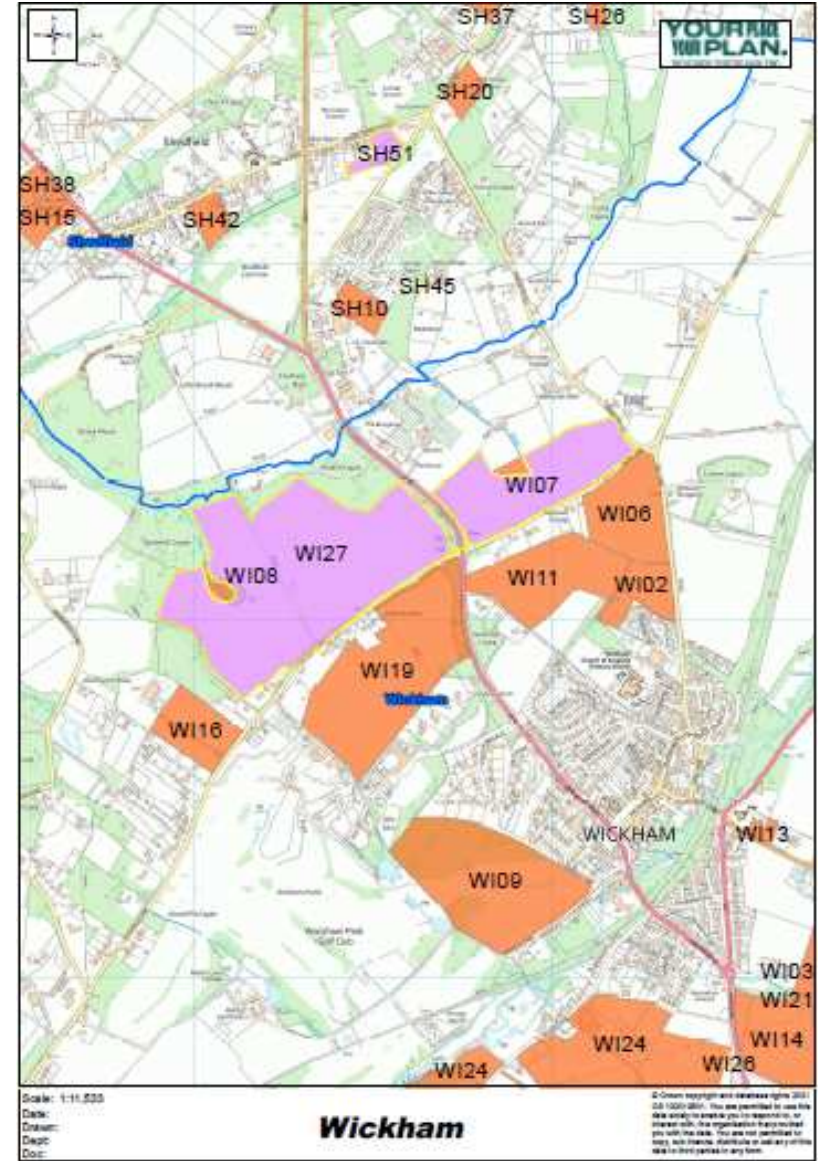
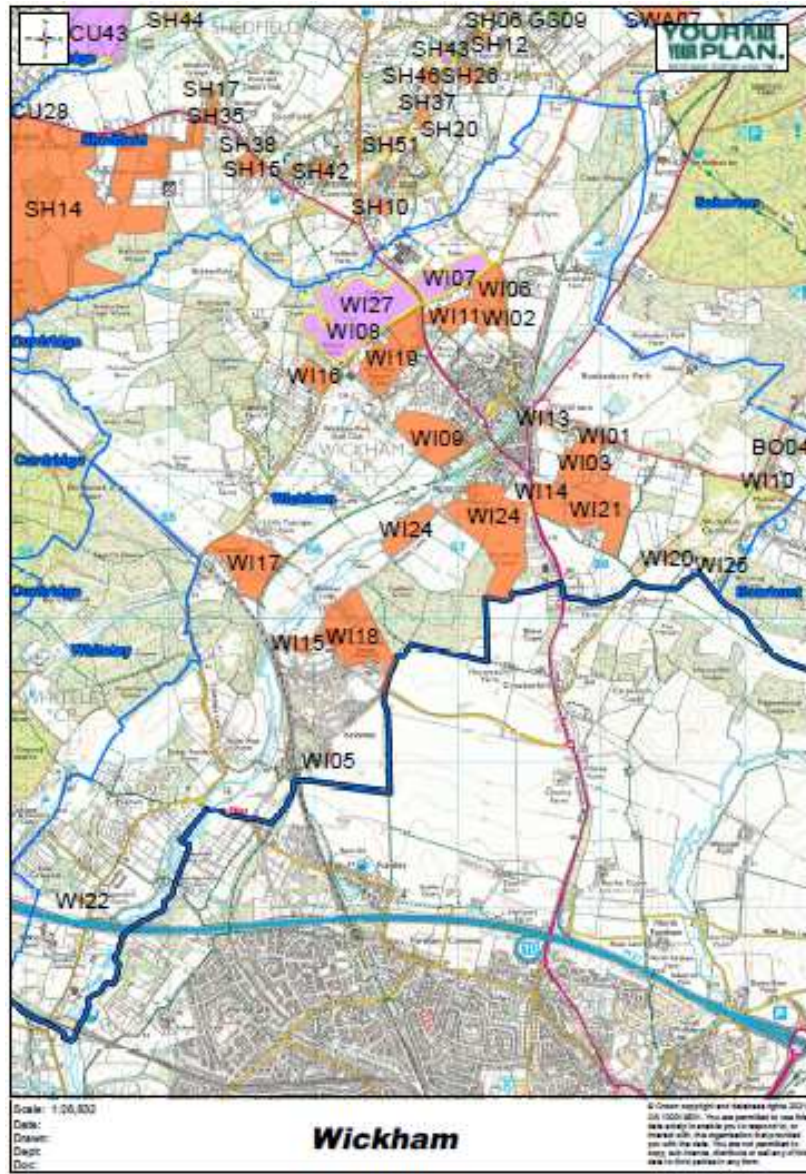
SHEDFIELD - 3



WHITELEY



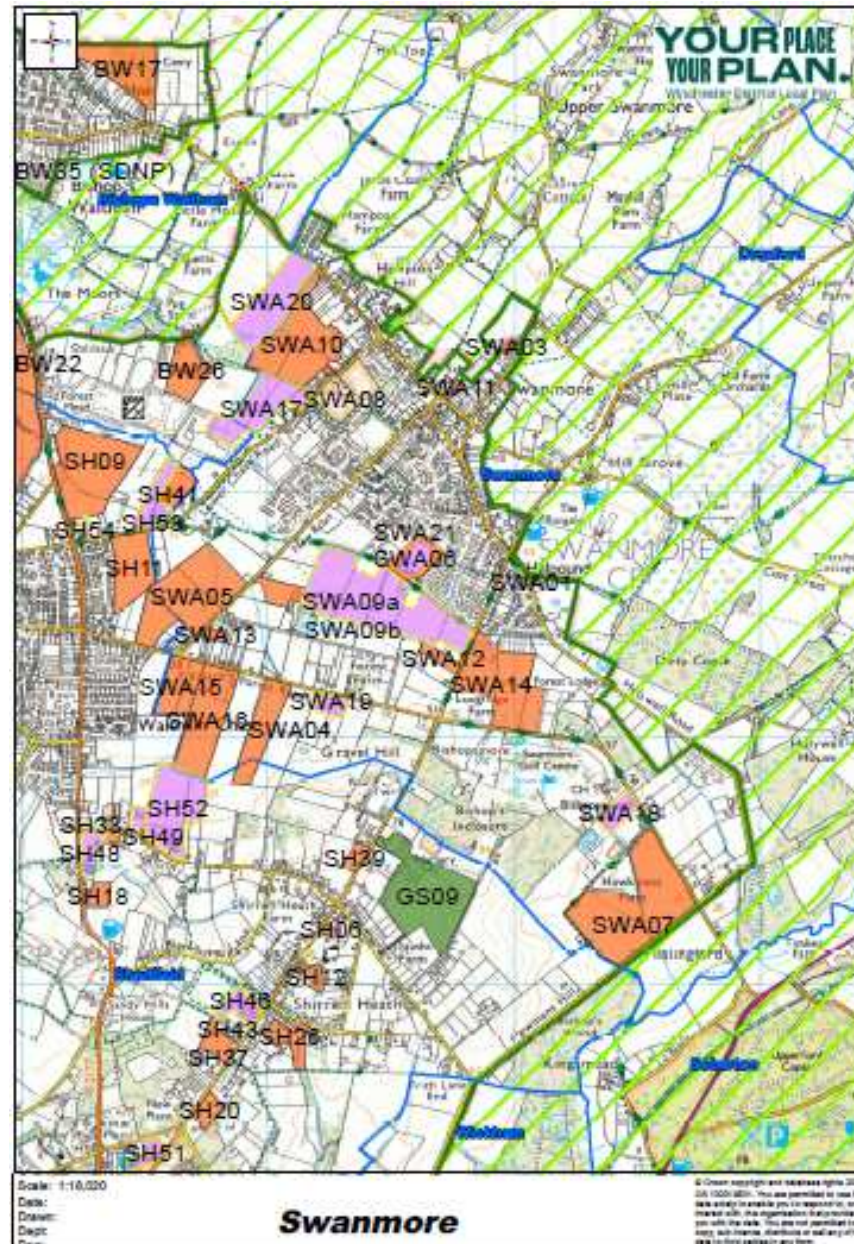
WICKHAM



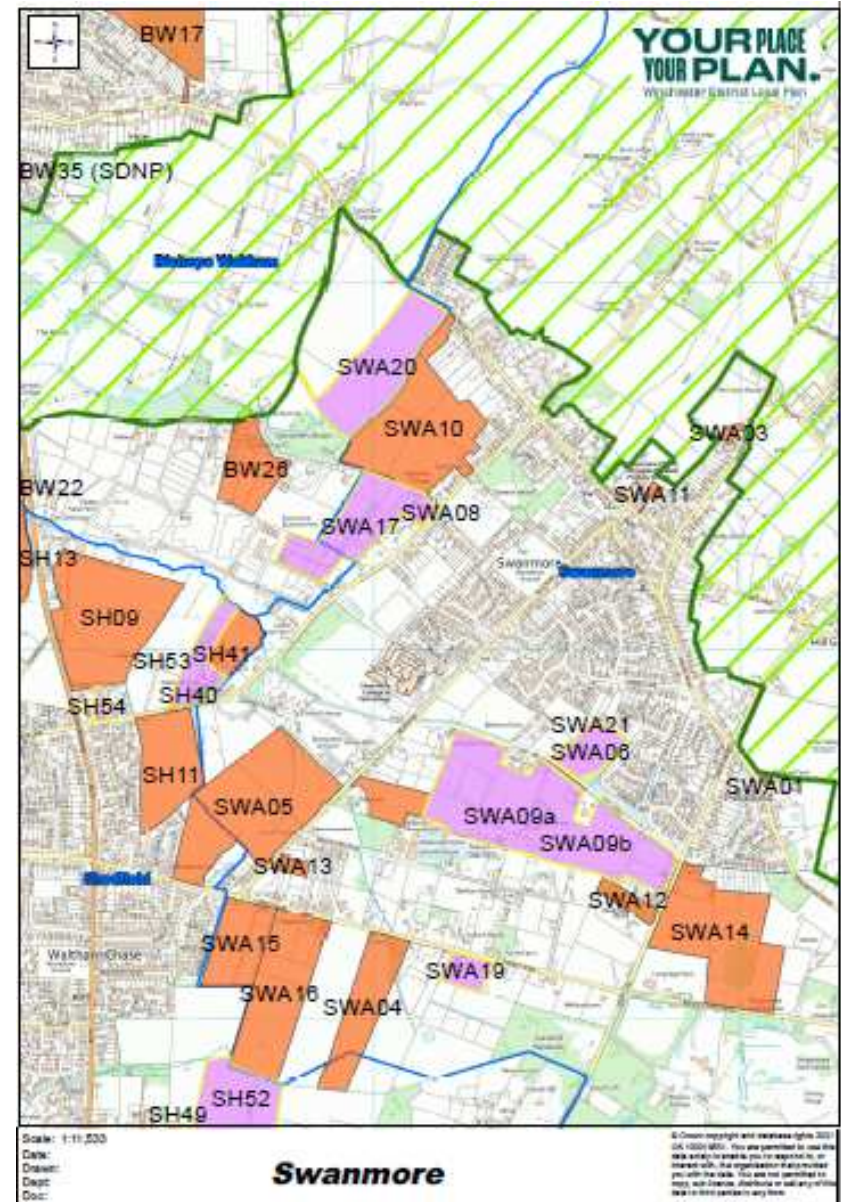
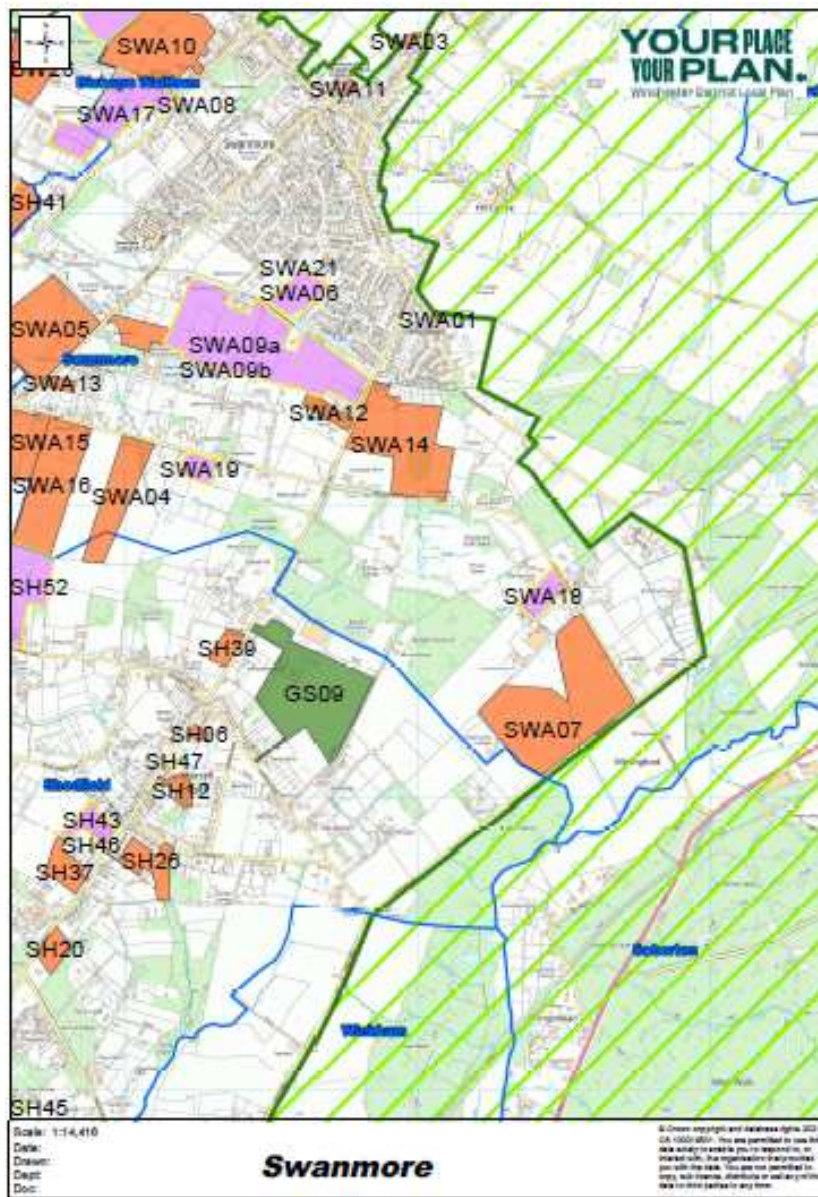
WICKHAM- detail



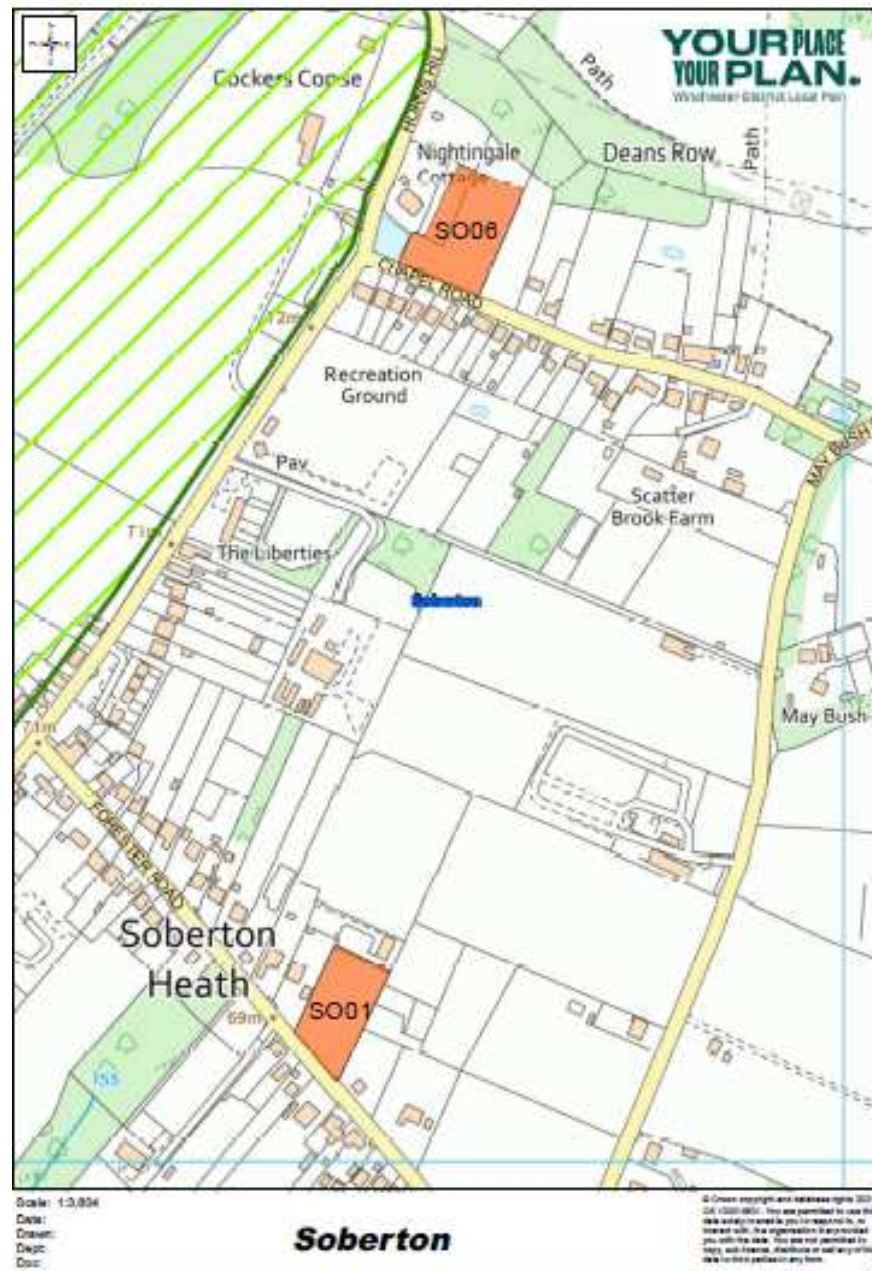
SWANMORE



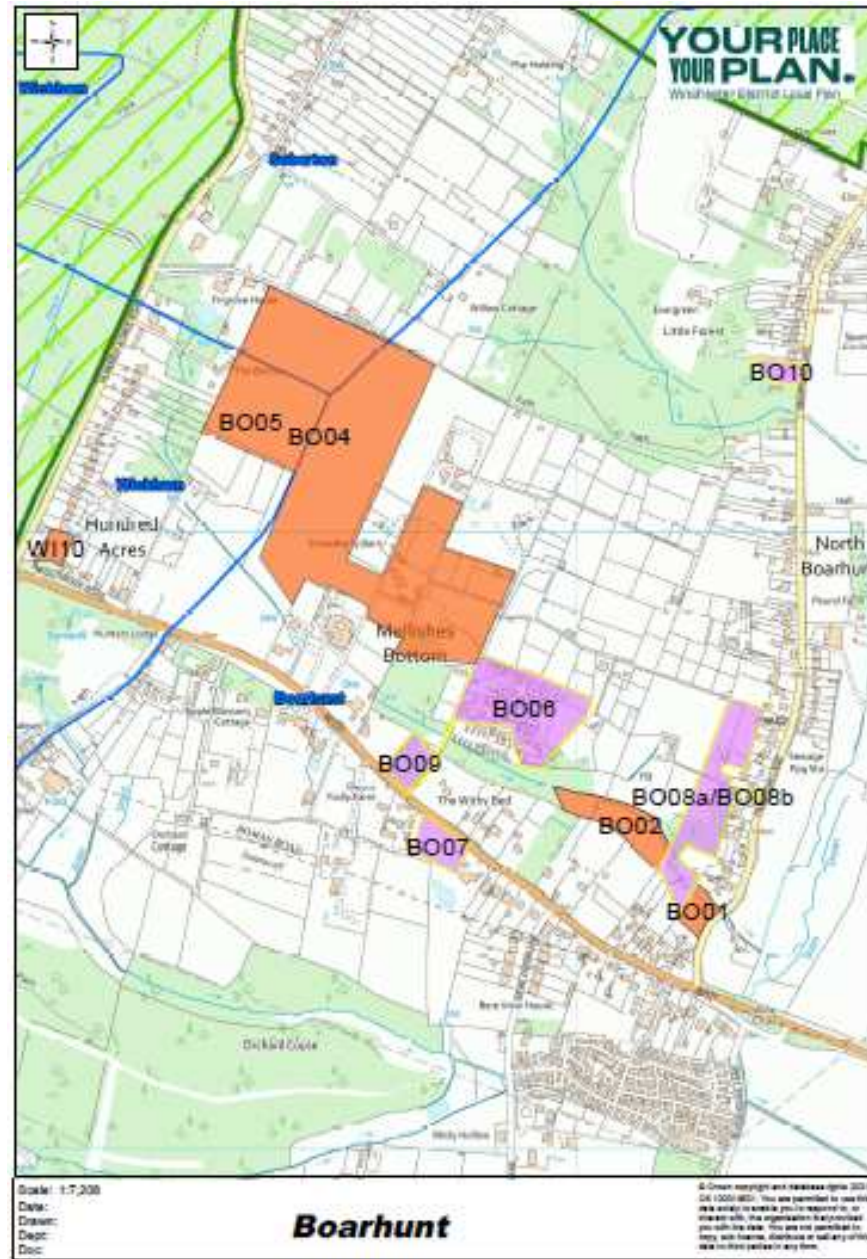
SWANMORE – detail



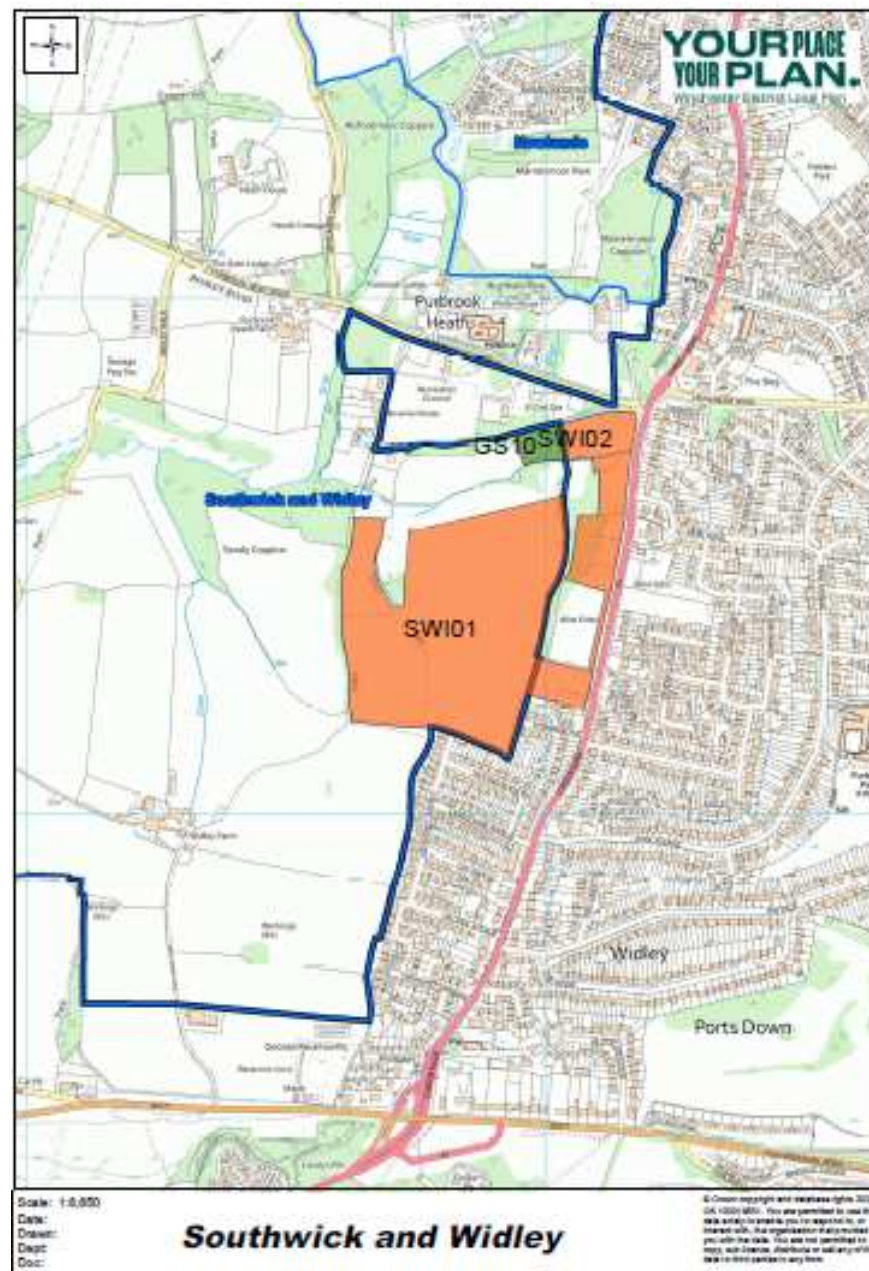
SOBERTON



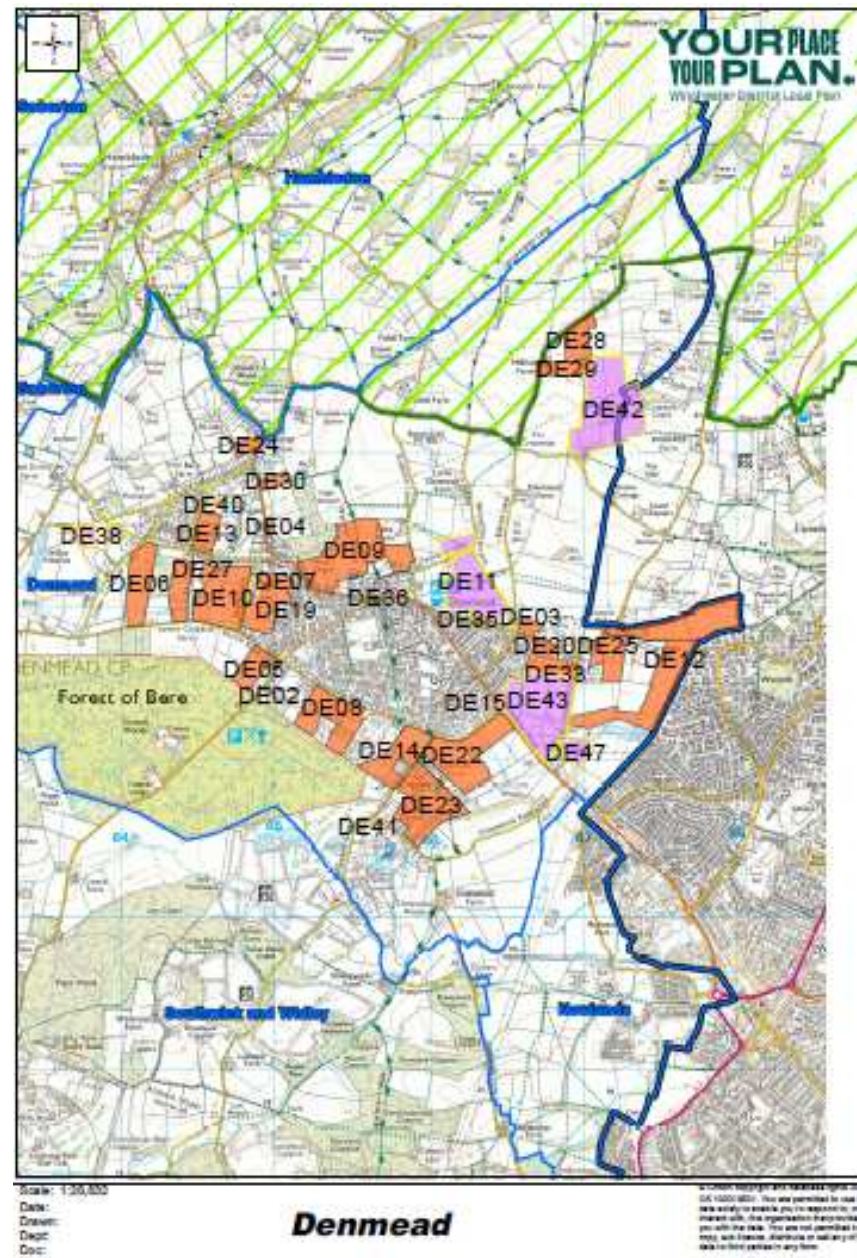
BOARHUNT



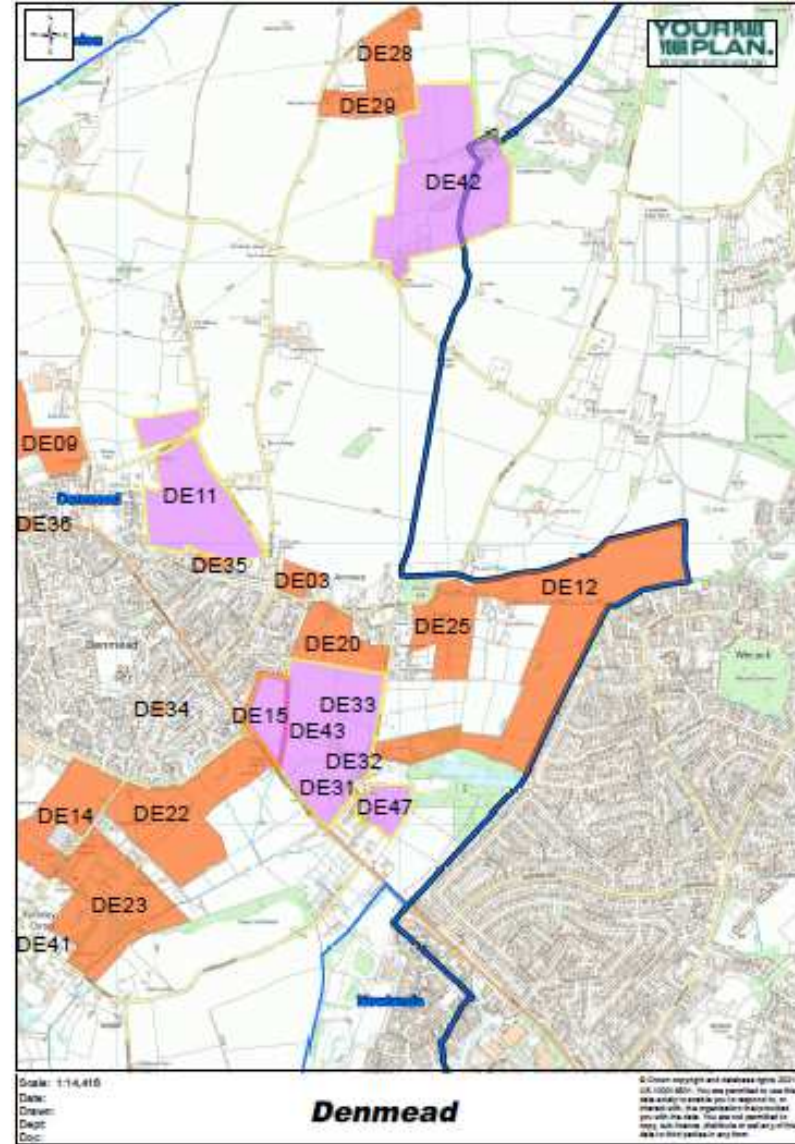
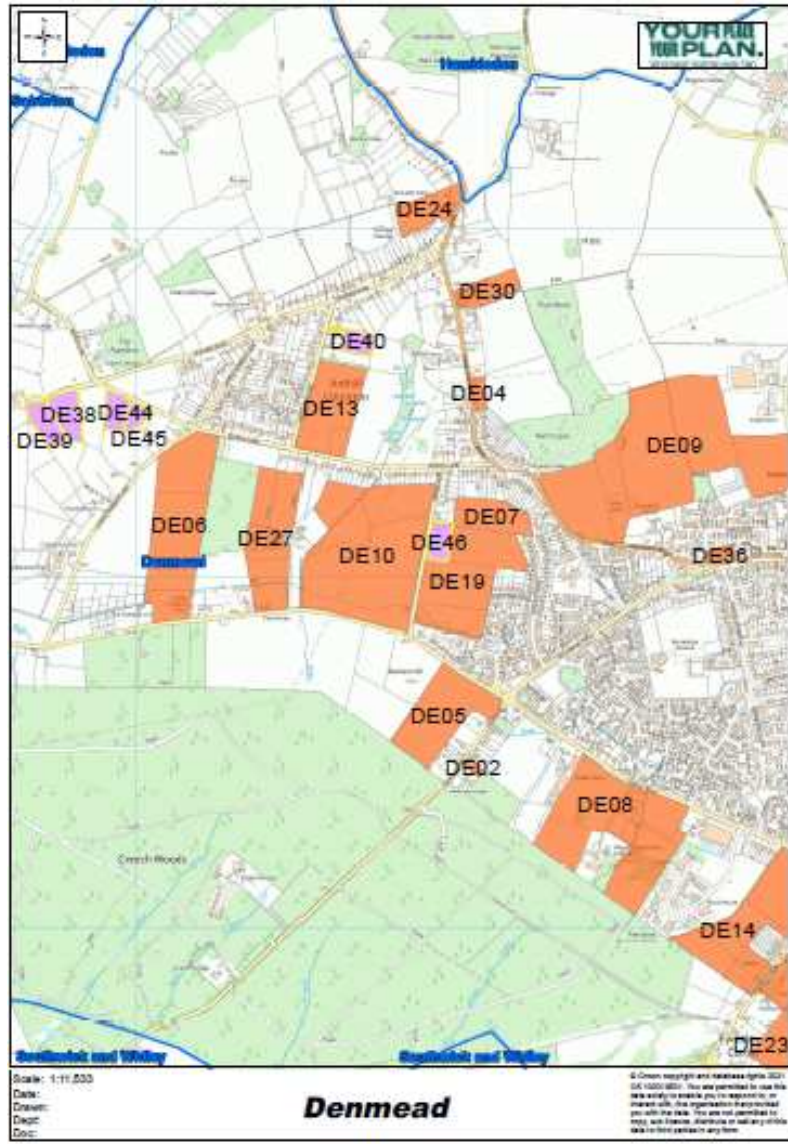
SOUTHWICK & WIDLEY



DENMEAD



DENMEAD - detail



Questions

