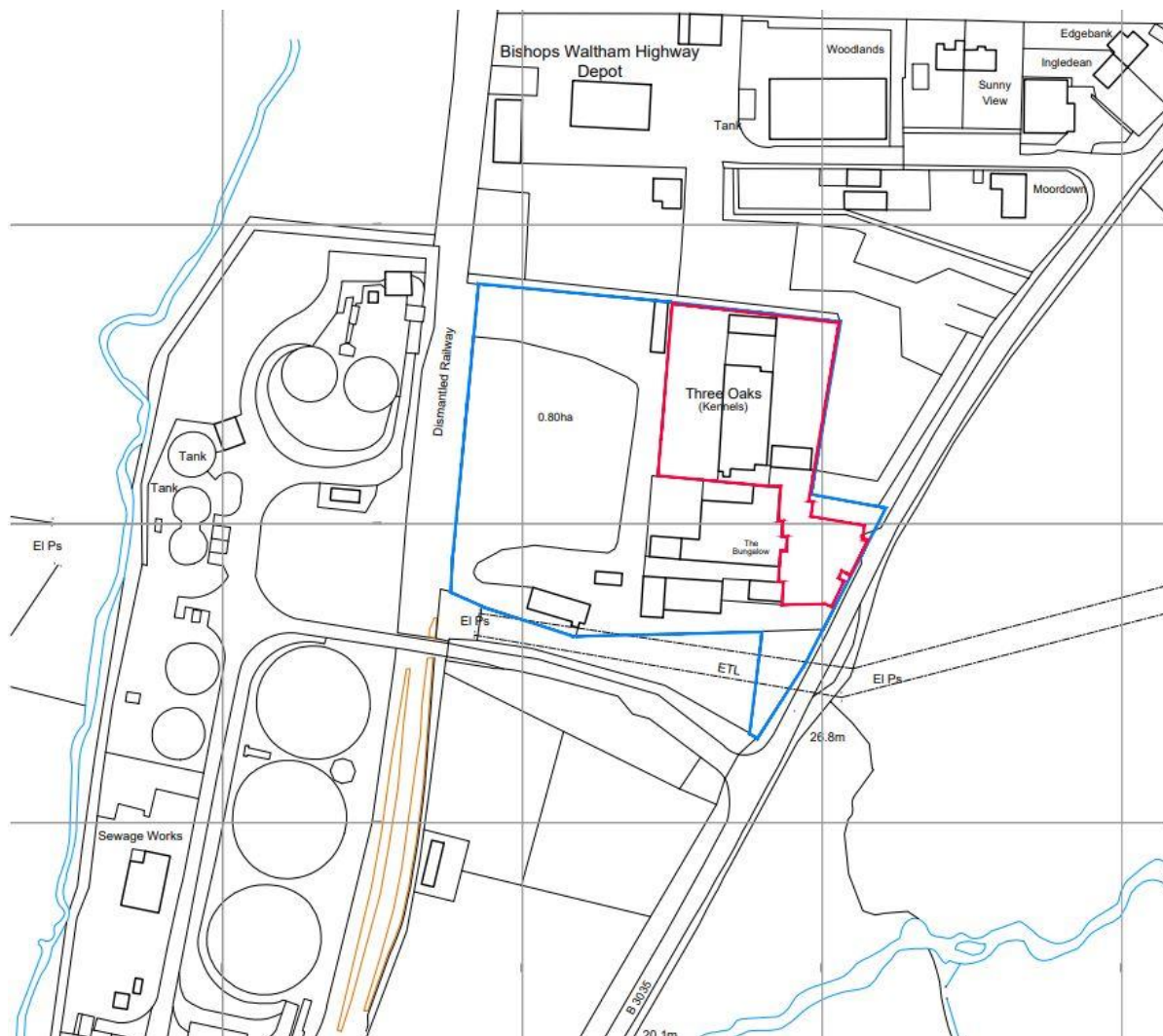


24/00526/FUL- Three Oak Kennels, Botley Road, Bishops Waltham, SO32 1DR

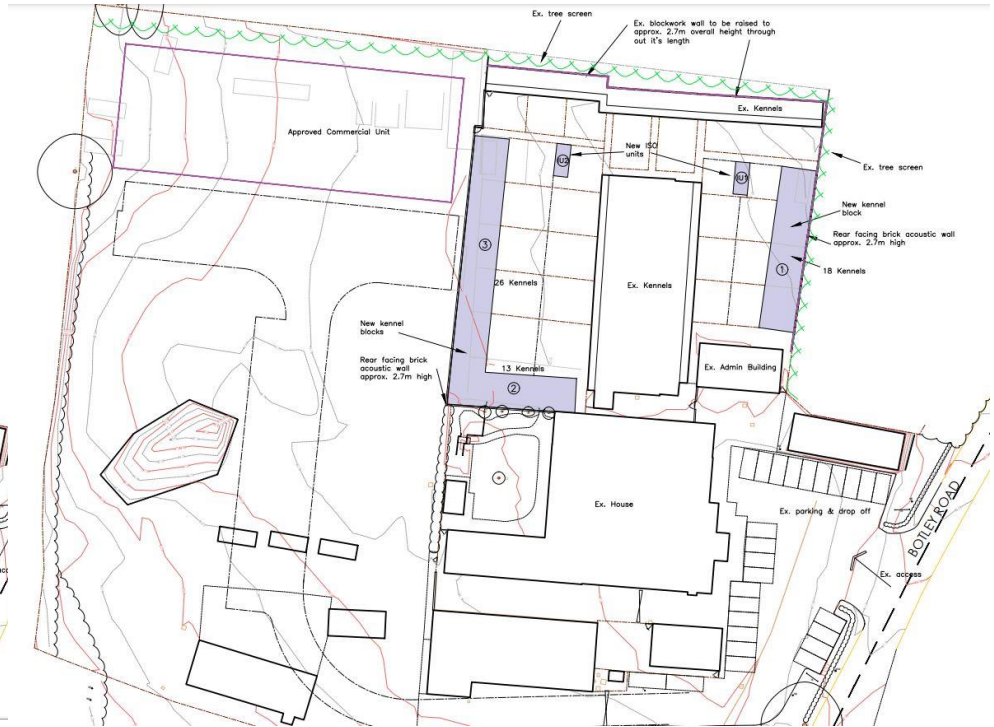
Proposed 3 new kennel blocks & 2 replacement
isolation units with associated paddocks at Three
Oaks Kennels.



Location Plan



Existing & Proposed Block Plan



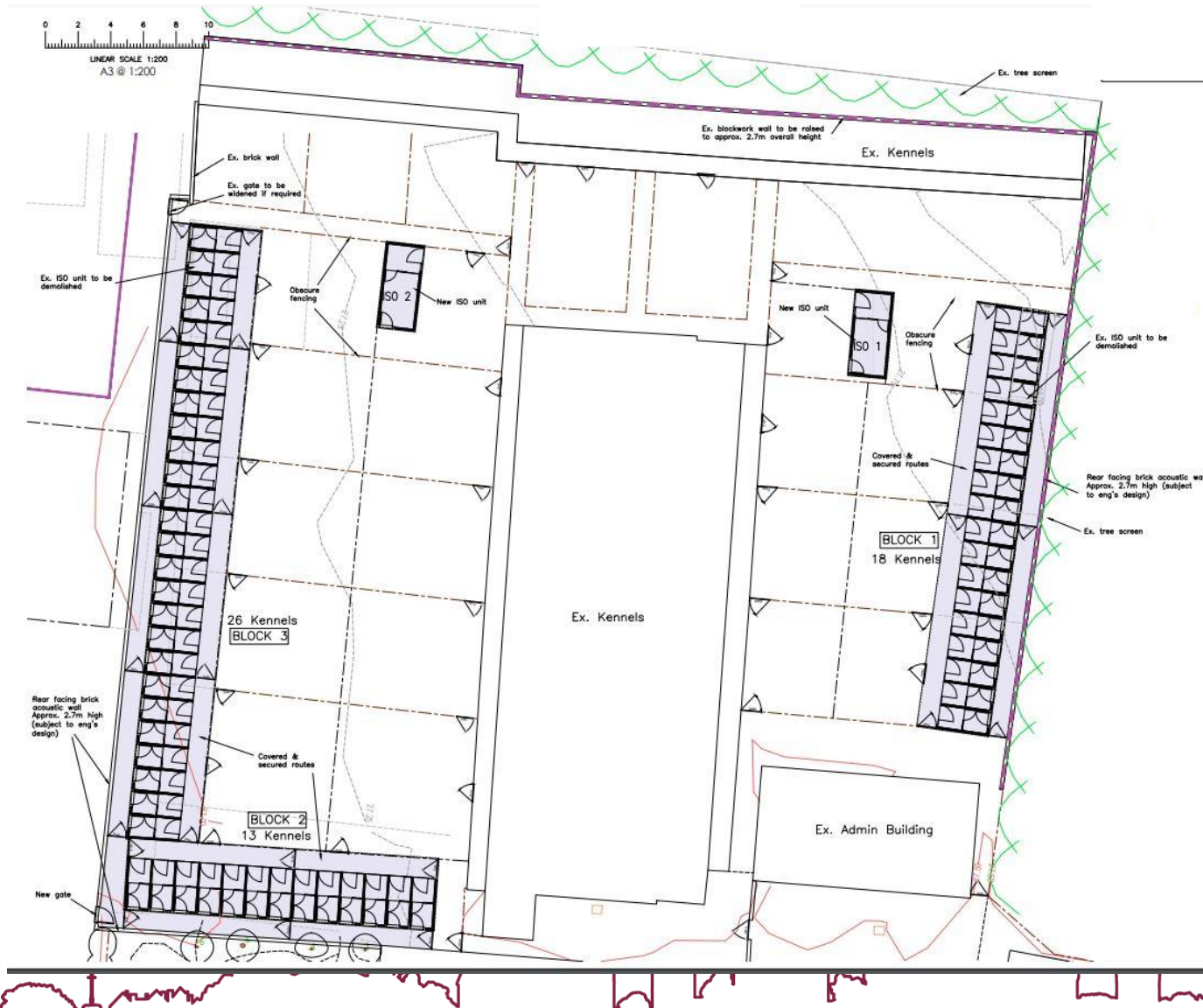
Wider Aerial Photograph



Closer Aerial Photograph



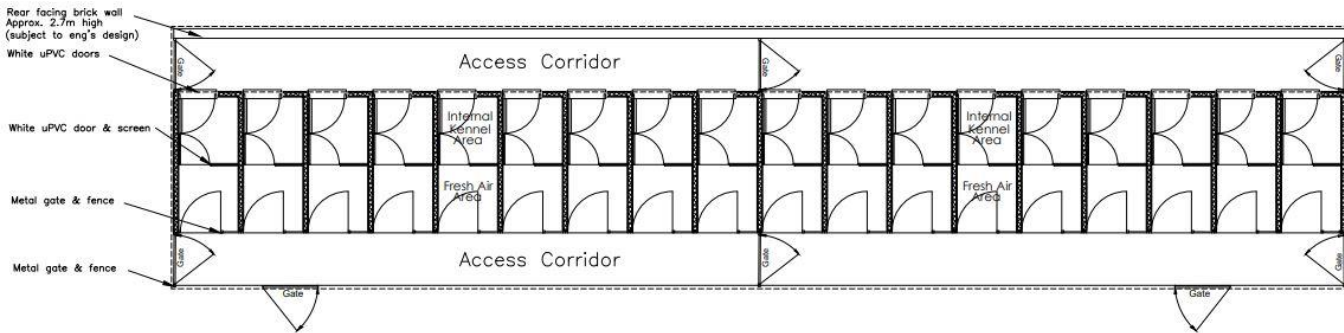
Site Plan



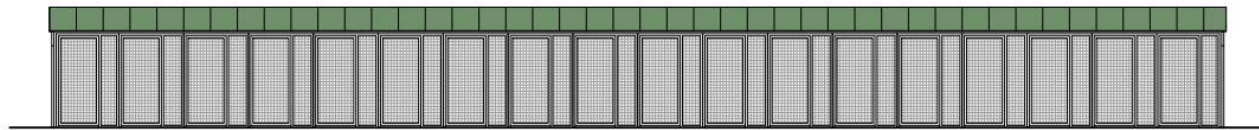
Closer Aerial Photograph



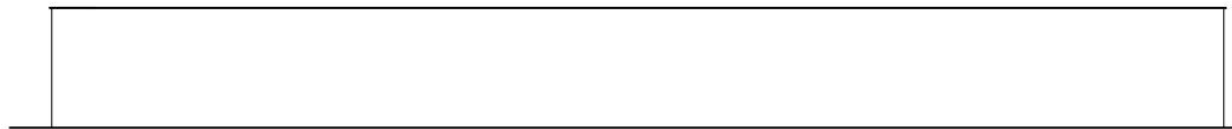
Block 1 Plans



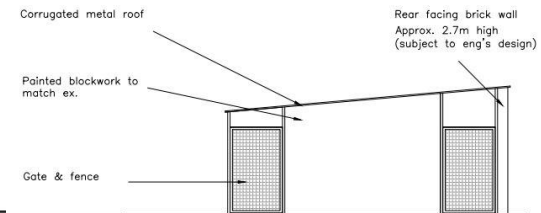
Ground Floor Plan 1:100



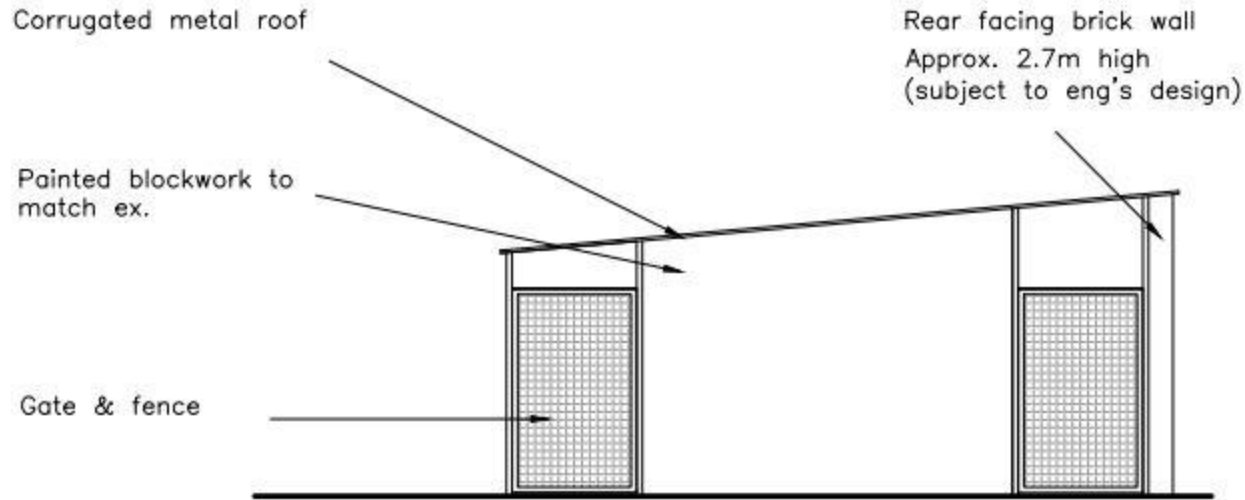
Front Elevation 1:100



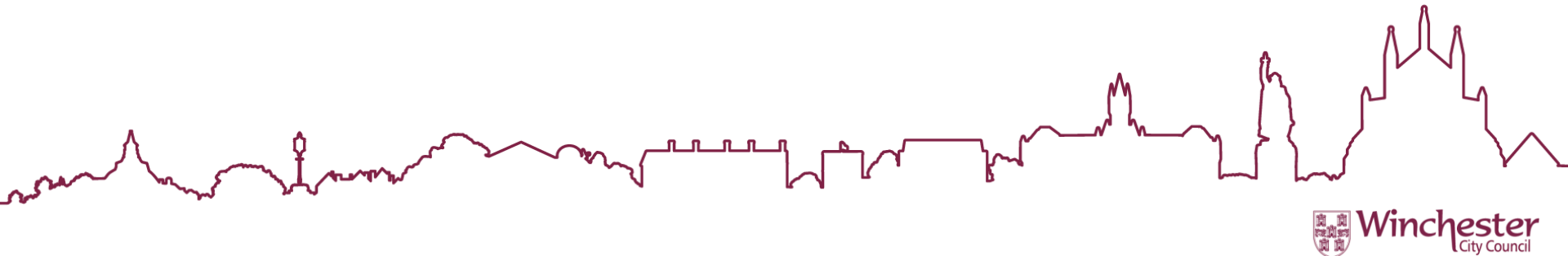
Rear Elevation



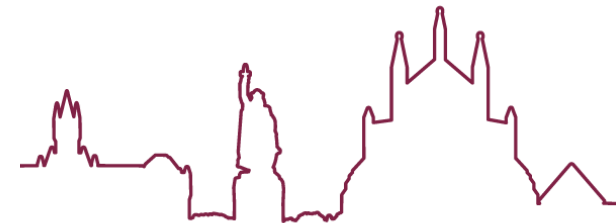
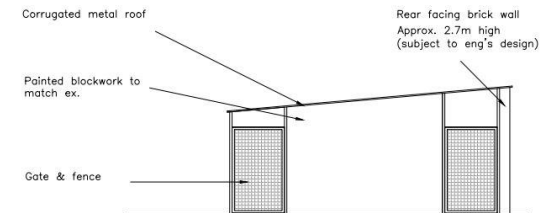
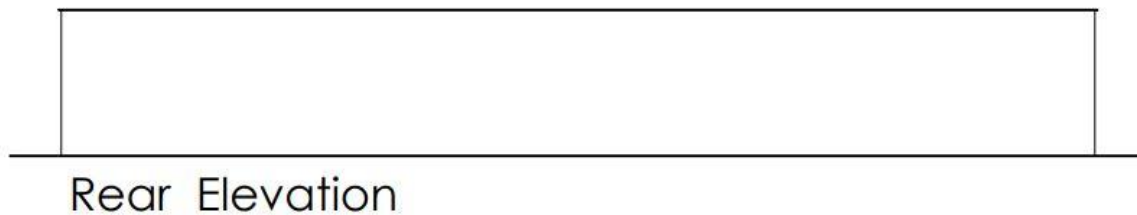
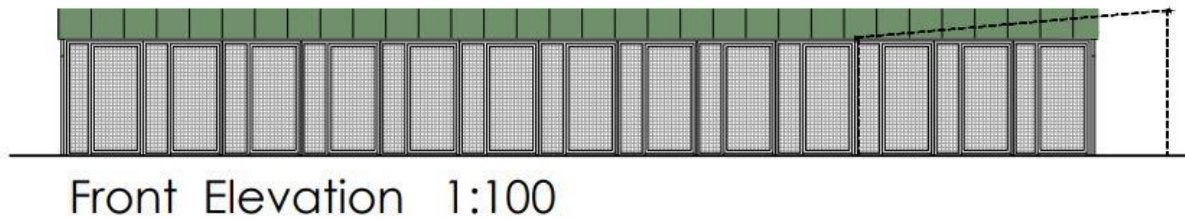
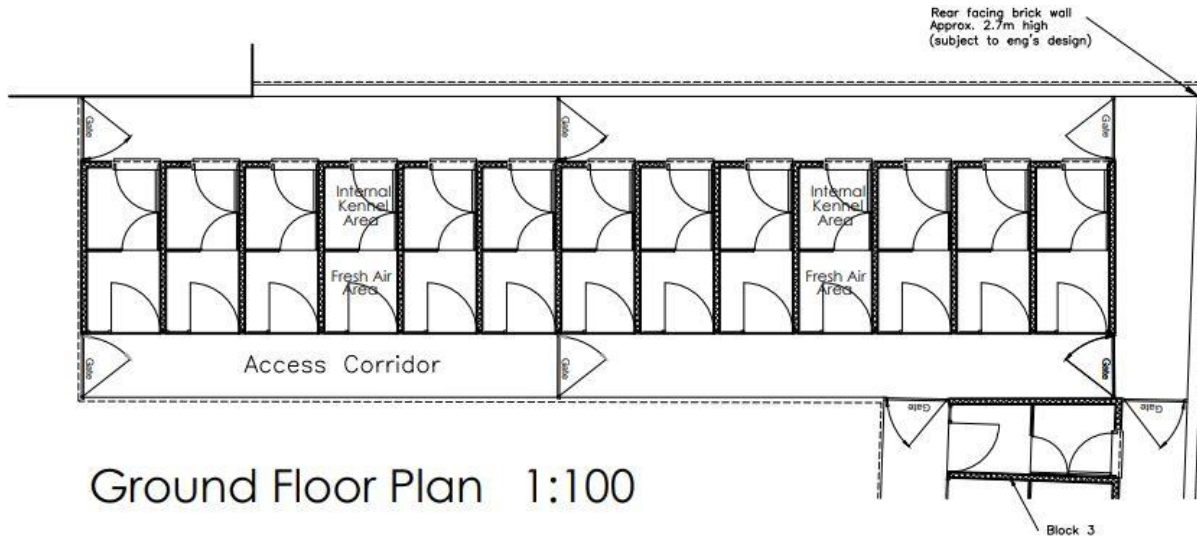
Side elevation for all kennels



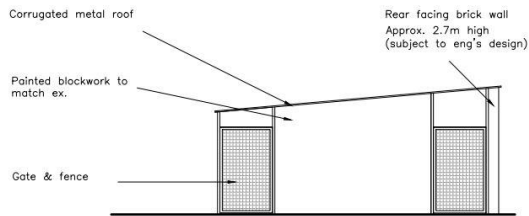
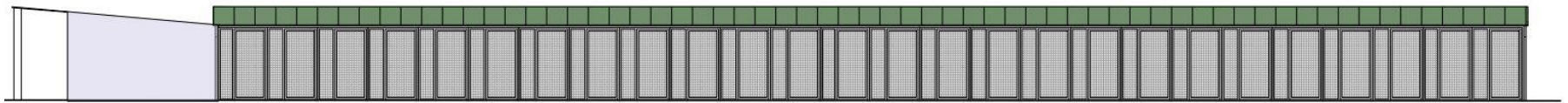
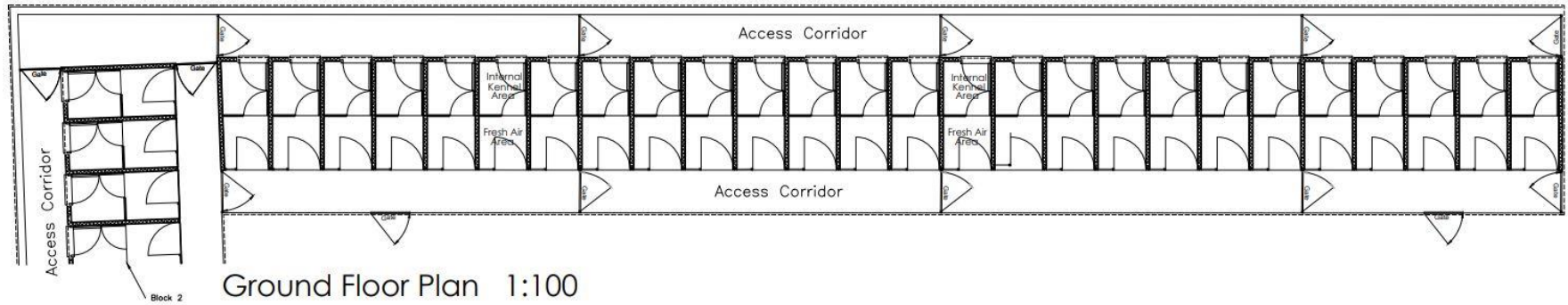
Typical Side Elevation Blocks 1, 2 & 3



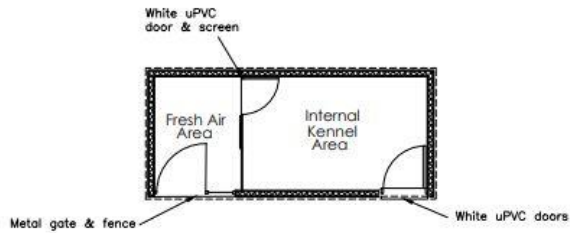
Block 2 Plans



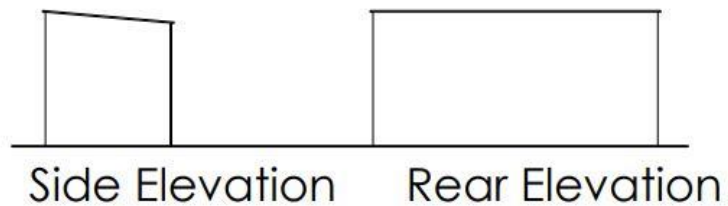
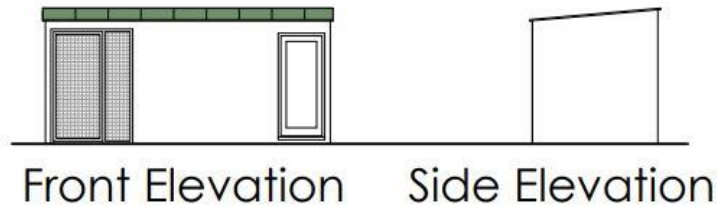
Block 3 Plans



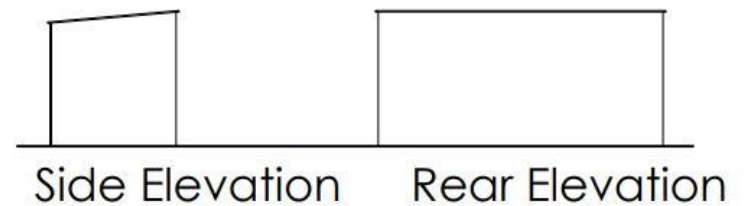
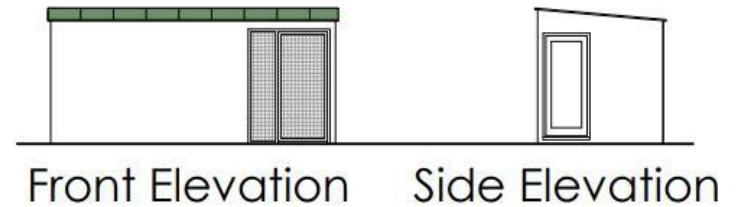
Isolation Unit Plans



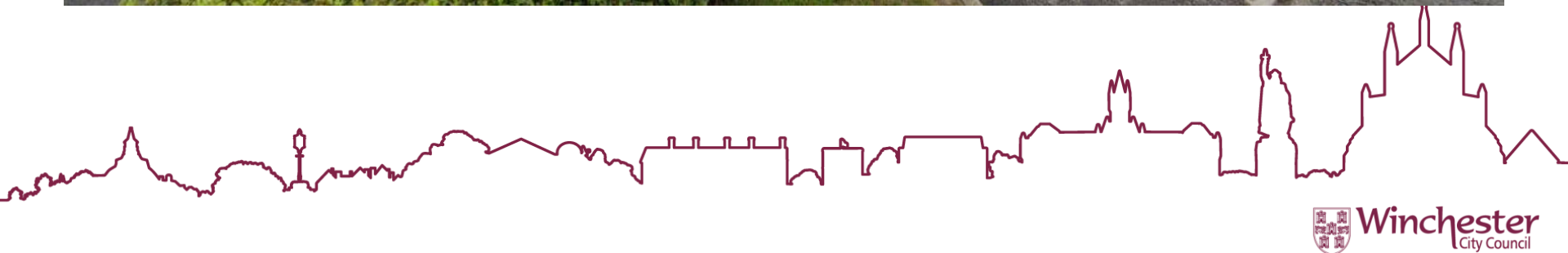
Ground Floor Plan 1:100



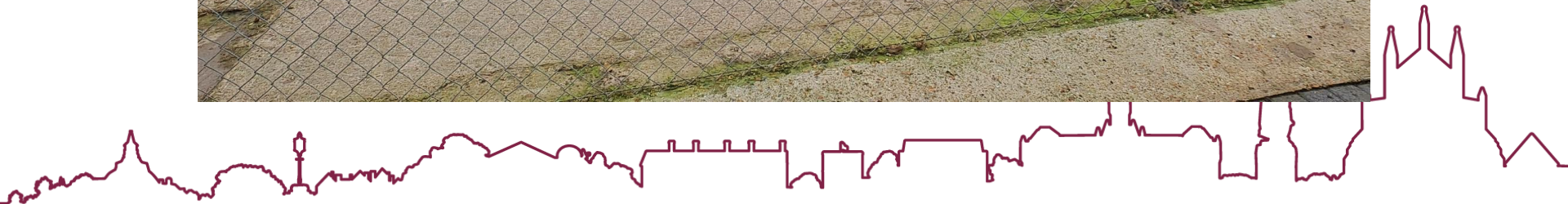
Ground Floor Plan 1:100



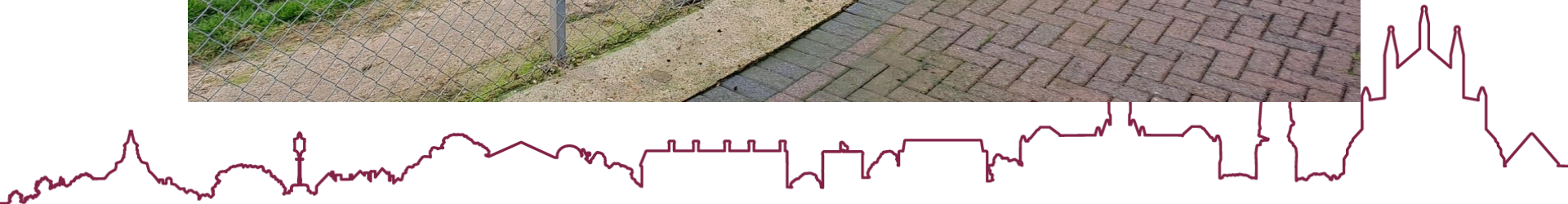
Street View to the front of the site



Views towards northern boundary and eastern paddocks



Views towards eastern boundary



Views towards western boundary



Wider angle photo looking towards western boundary



Conclusion

