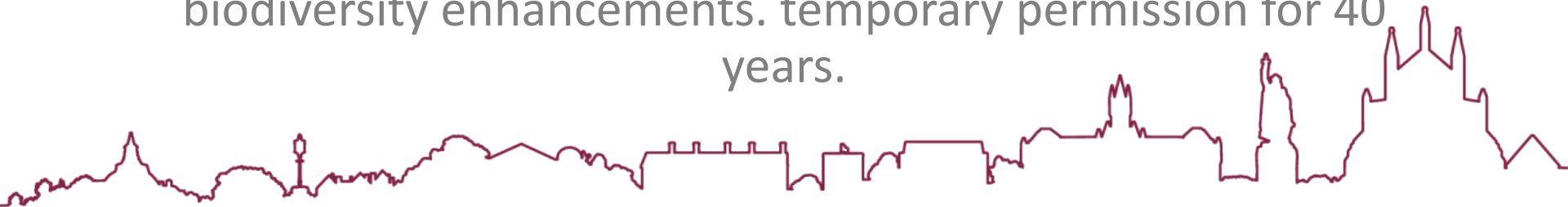


24/02804/FUL

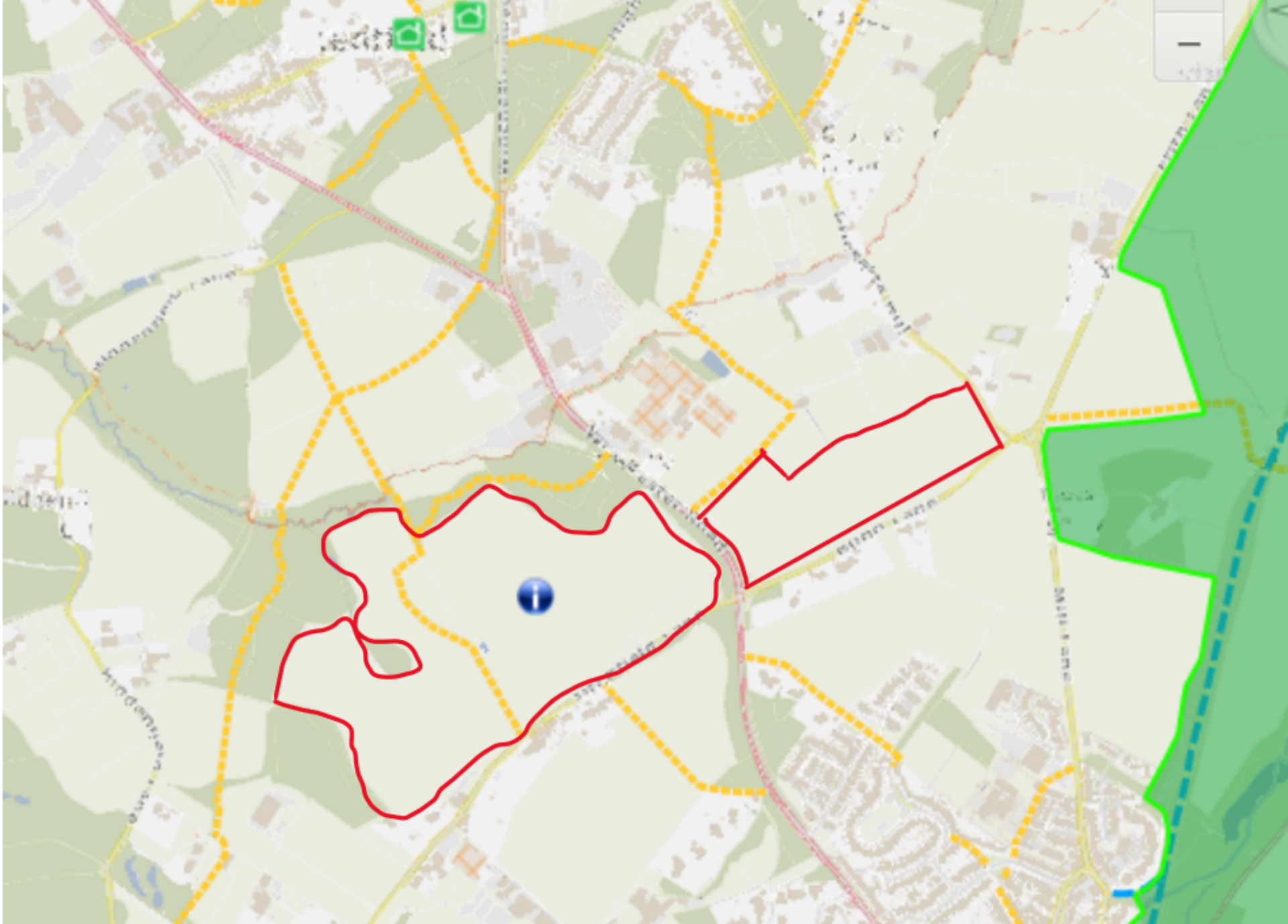
Land At Titchfield Lane, Wickham, Hampshire

Installation, operation and decommissioning of renewable energy generating station comprising ground-mounted photovoltaic solar arrays together with transformer stations, site accesses, internal access tracks, security measures, access gates, other ancillary infrastructure, landscaping and biodiversity enhancements. temporary permission for 40 years.

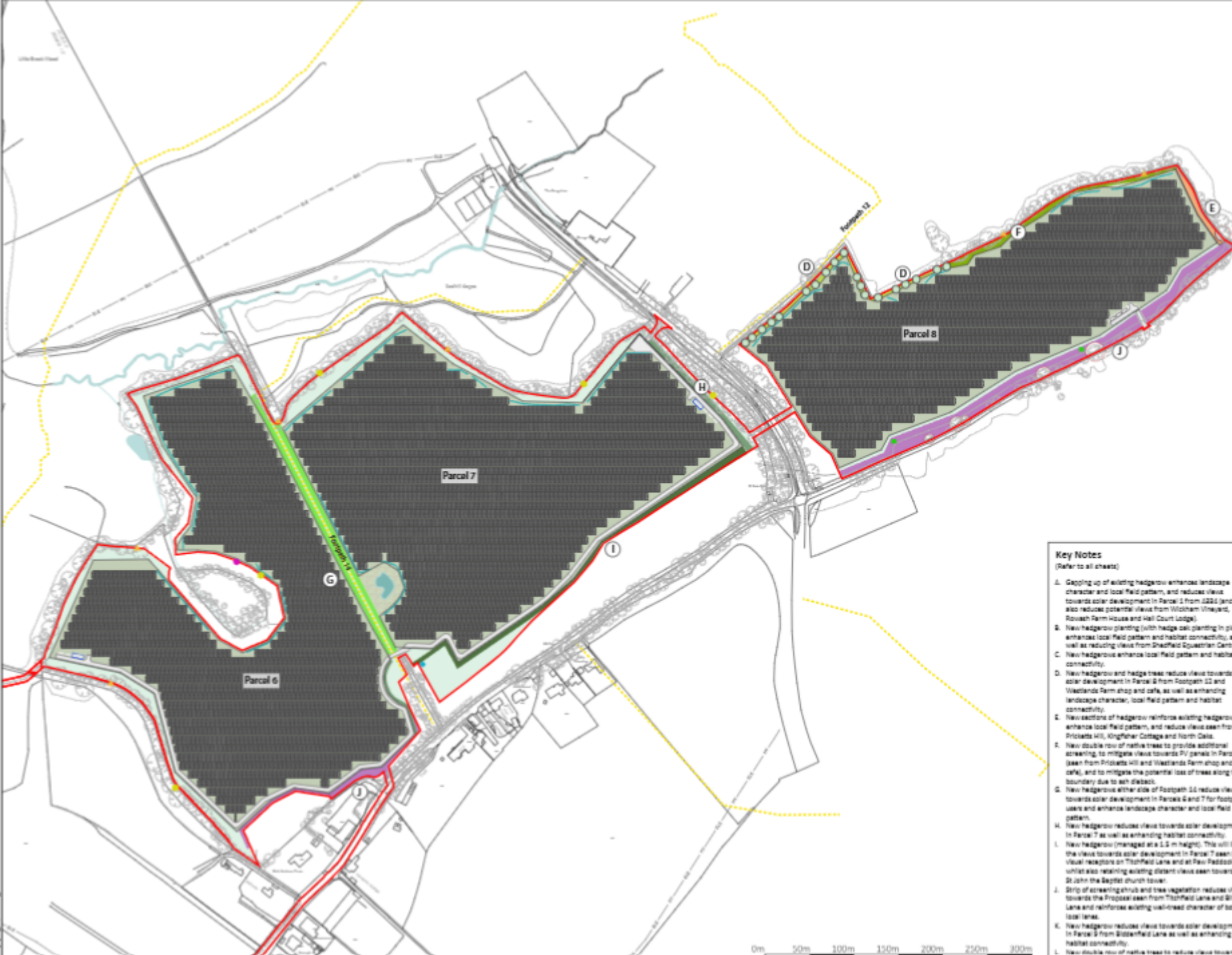








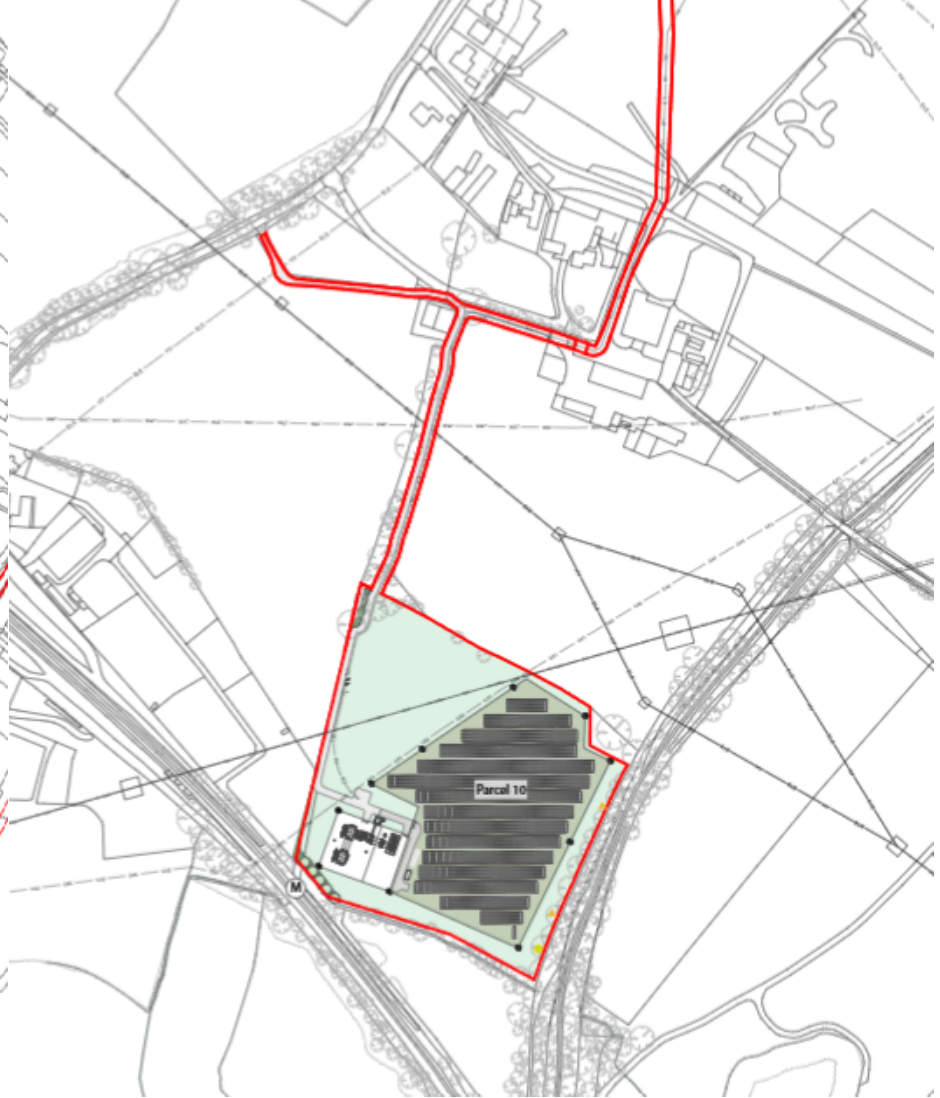


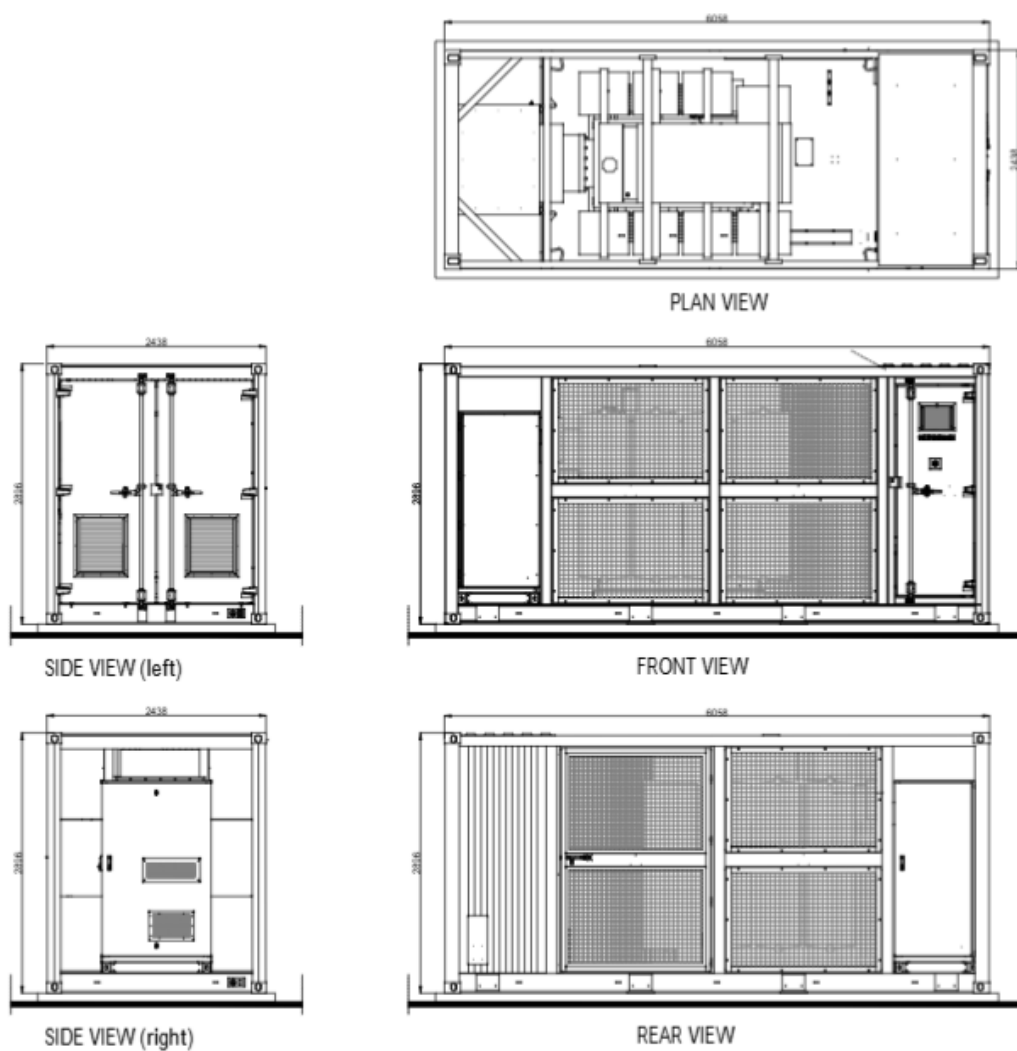


Key Notes

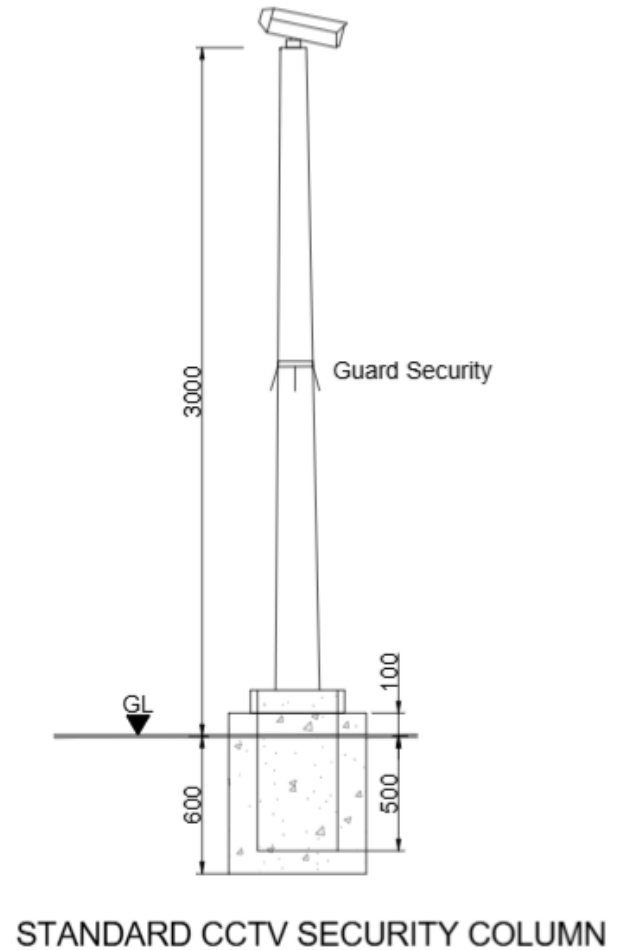
(Refer to all sheets)

- A. Gapping up of existing hedgerow enhances landscape character and local field pattern, and reduces views towards solar development in Parcel 1 from JSSS (and also reduces potential views from Wickham Vineyard, Rosvash Farm House and Hall Court Lodge).
- B. New hedgerow planting (with hedge oak planting in pits) enhances local field pattern and habitat connectivity, as well as reducing views from Sheafield Equestrian Centre.
- C. New hedgerow enhances local field pattern and habitat connectivity.
- D. New hedgerow and hedge trees reduce views towards solar development in Parcel 8 from Footpath 12 and Wicklands Farm shop and cafe, as well as enhancing landscape character, local field pattern and habitat connectivity.
- E. New sections of hedgerow reinforce existing hedgerow, enhance local field pattern, and reduce views seen from Priests Hill, Kingfisher Cottage and North Oaks.
- F. New double row of native trees to provide additional screening, to mitigate views towards PV panels in Parcel 8 (seen from Priests Hill and Wicklands Farm shop and cafe), and to mitigate the potential loss of trees along its boundary due to ash dieback.
- G. New hedgerow either side of Footpath 12 reduce views towards solar development in Parcels 6 and 7 for footpath users and enhance landscape character and local field pattern.
- H. New hedgerow reduces views towards solar development in Parcel 7 as well as enhancing habitat connectivity.
- I. New hedgerow (planted at a 1.5 m height). This will limit the views towards solar development in Parcel 7 seen from Throfield Lane and at Paul Reddick whilst also retaining existing distant views seen towards St John the Baptist church tower.
- J. Strip of screening shrub and tree vegetation reduces views towards the Prospect seen from Throfield Lane and St John Lane and reinforces existing wall-toed character of both local lanes.
- K. New hedgerow reduces views towards solar development in Parcel 8 from Stutterfield Lane as well as enhancing habitat connectivity.
- L. New double row of native trees to reduce views towards

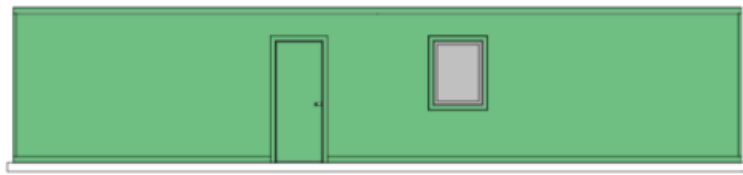




Proposed substation



Proposed CCTV column



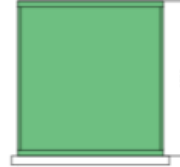
Front Elevation



Side Elevation

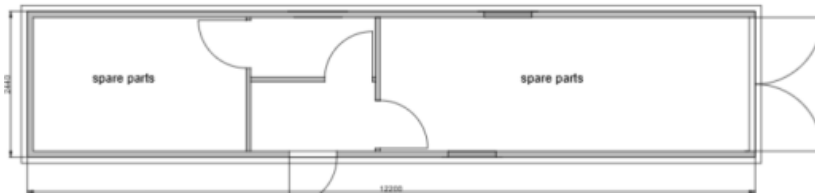


Rear Elevation

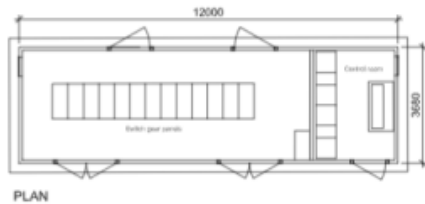


Side Elevation

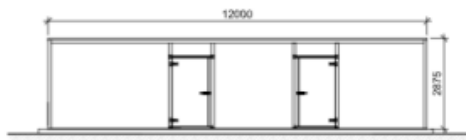
Spare parts container



Switch gear container



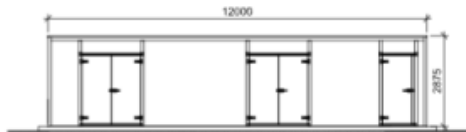
PLAN



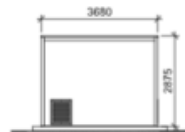
REAR ELEVATION



SIDE ELEVATION

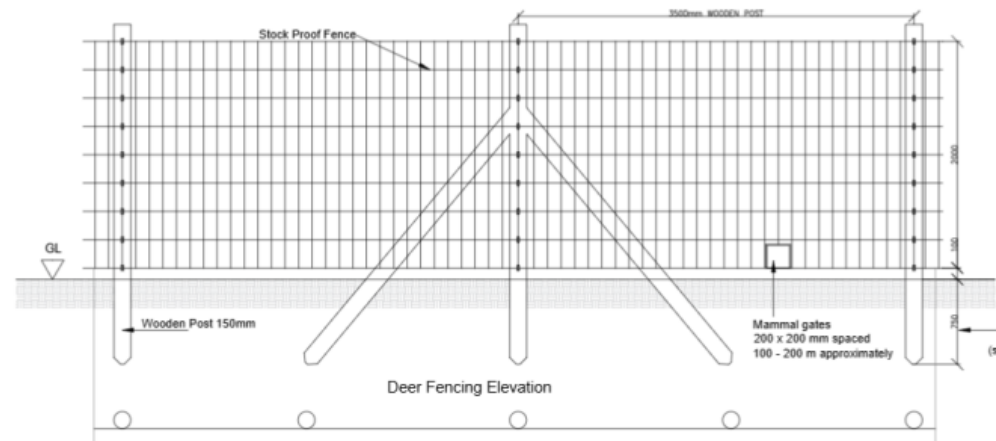


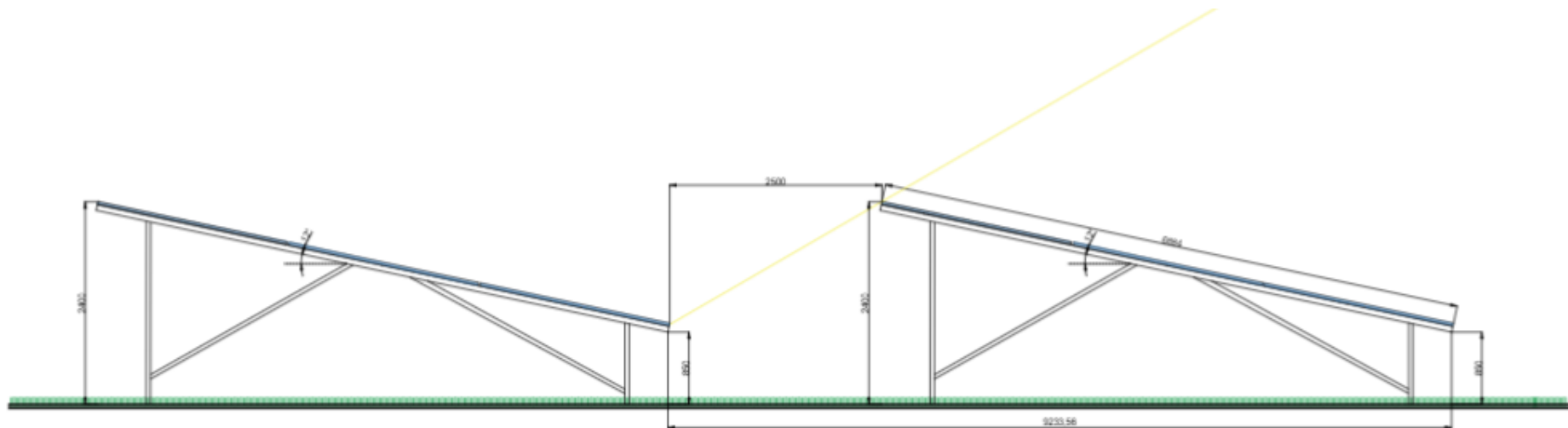
FRONT ELEVATION



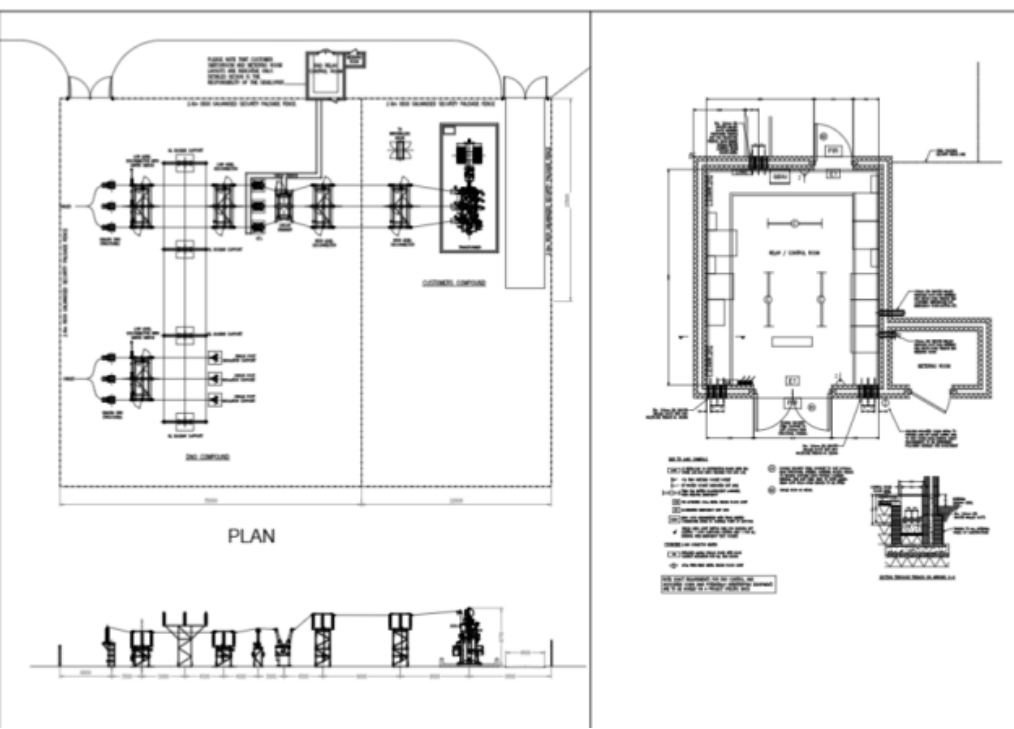
SIDE ELEVATION

Proposed deer fencing





Proposed solar array cross section

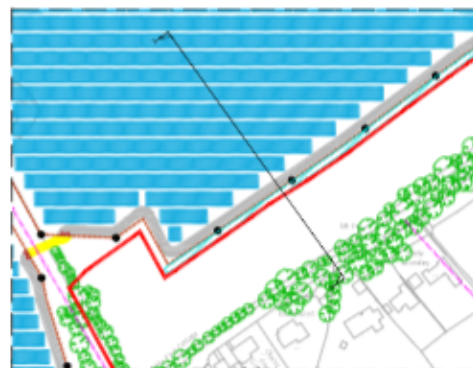


Proposed main substation parcel 10



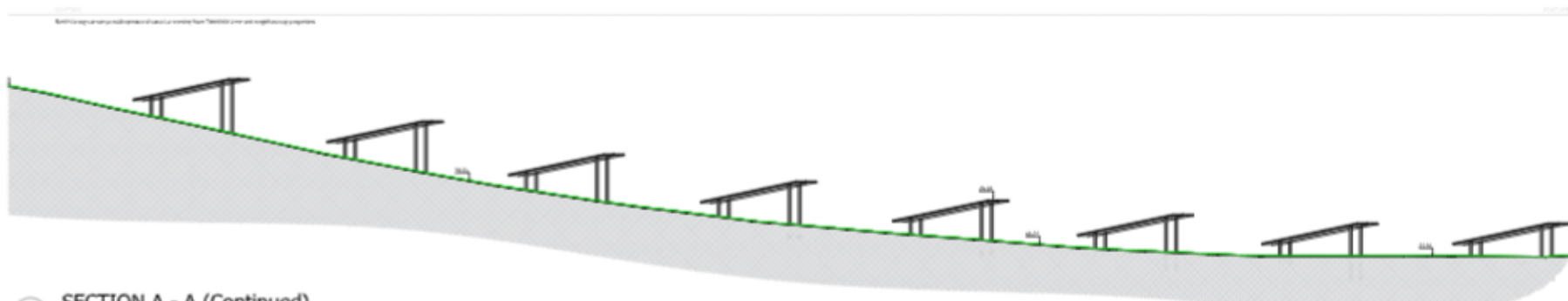
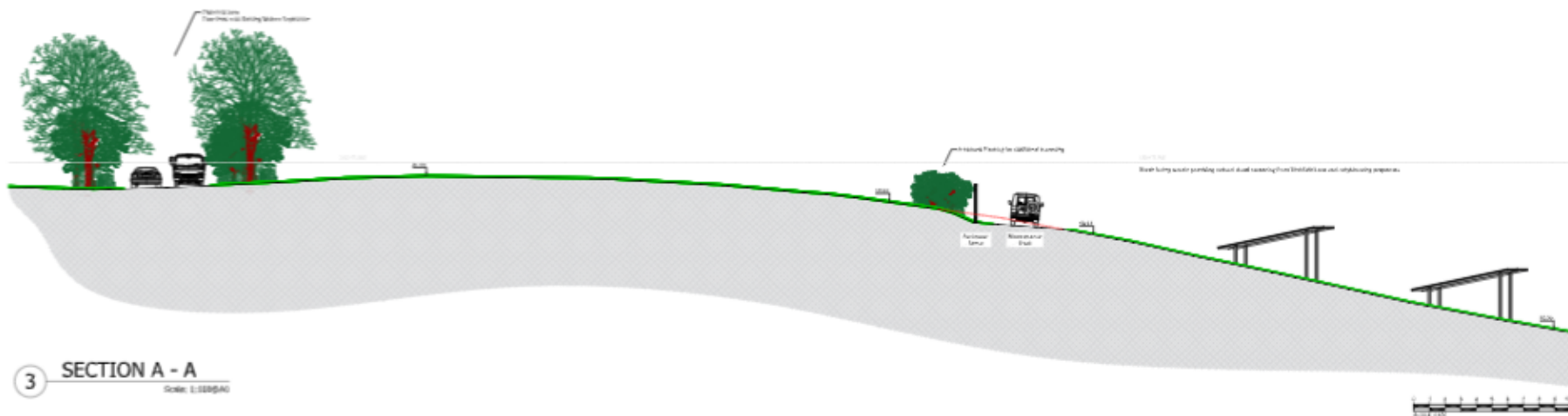
1 KEY PLAN

Scale: 1:5000@A0

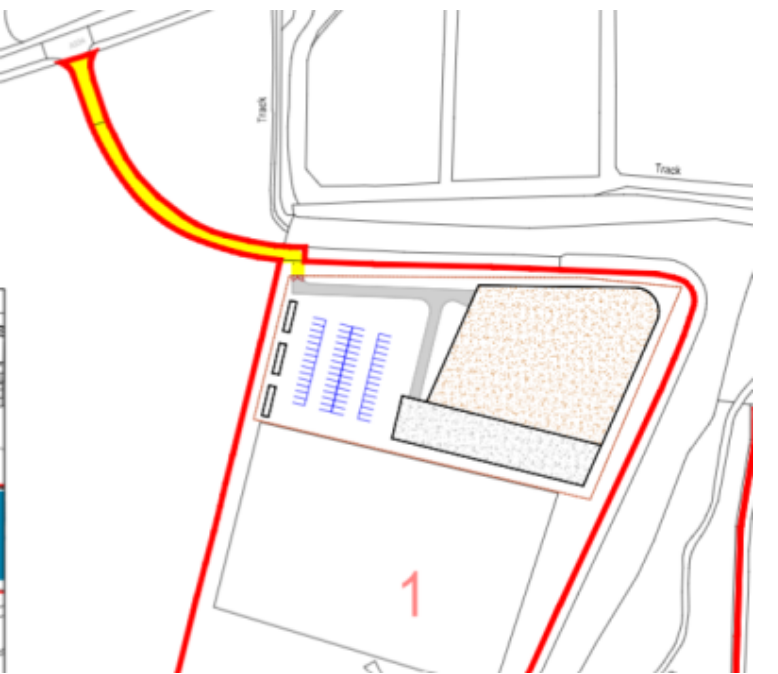


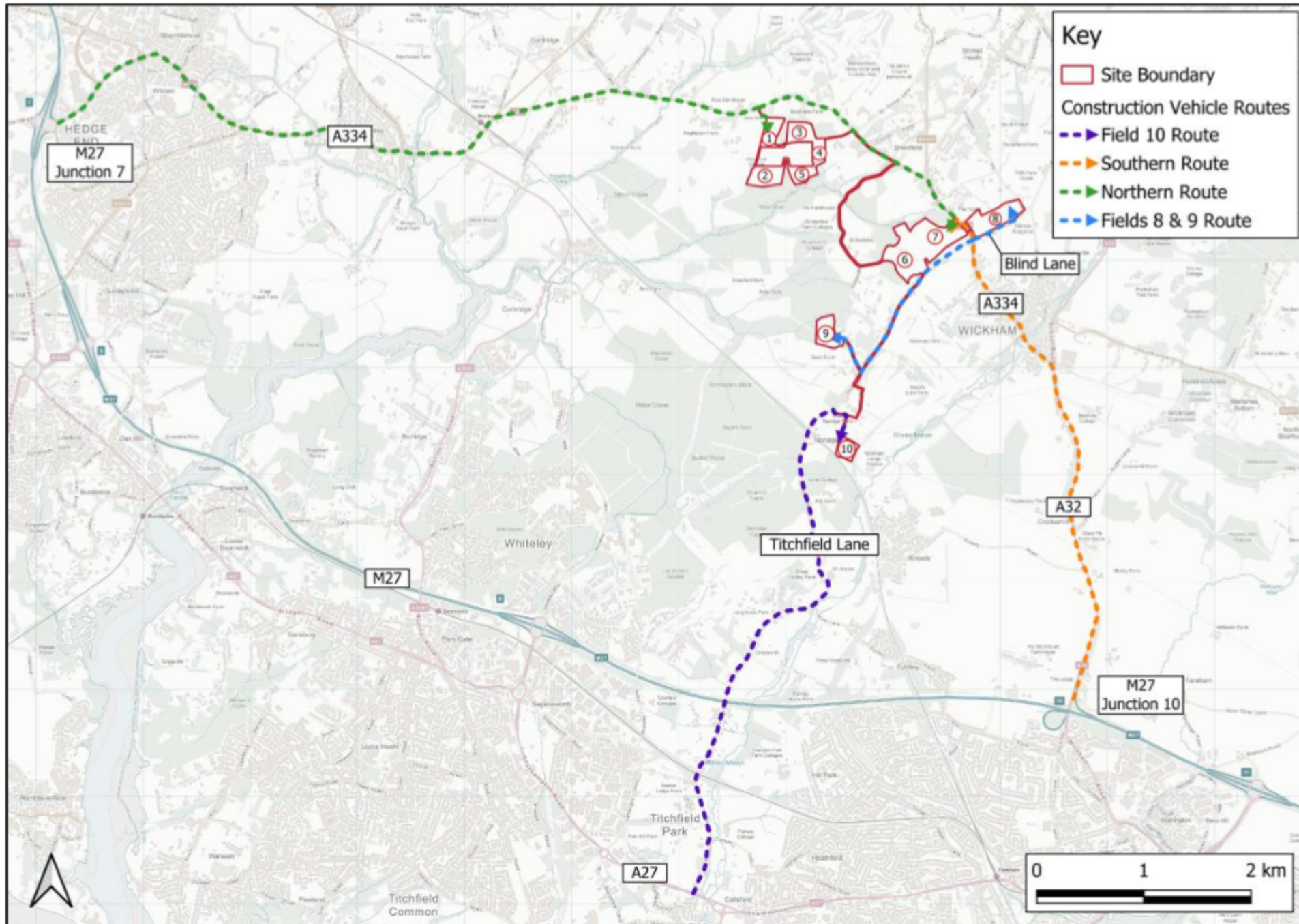
2 CROSS SECTION DETAIL

Scale: 1:1000@A0



Proposed construction compounds

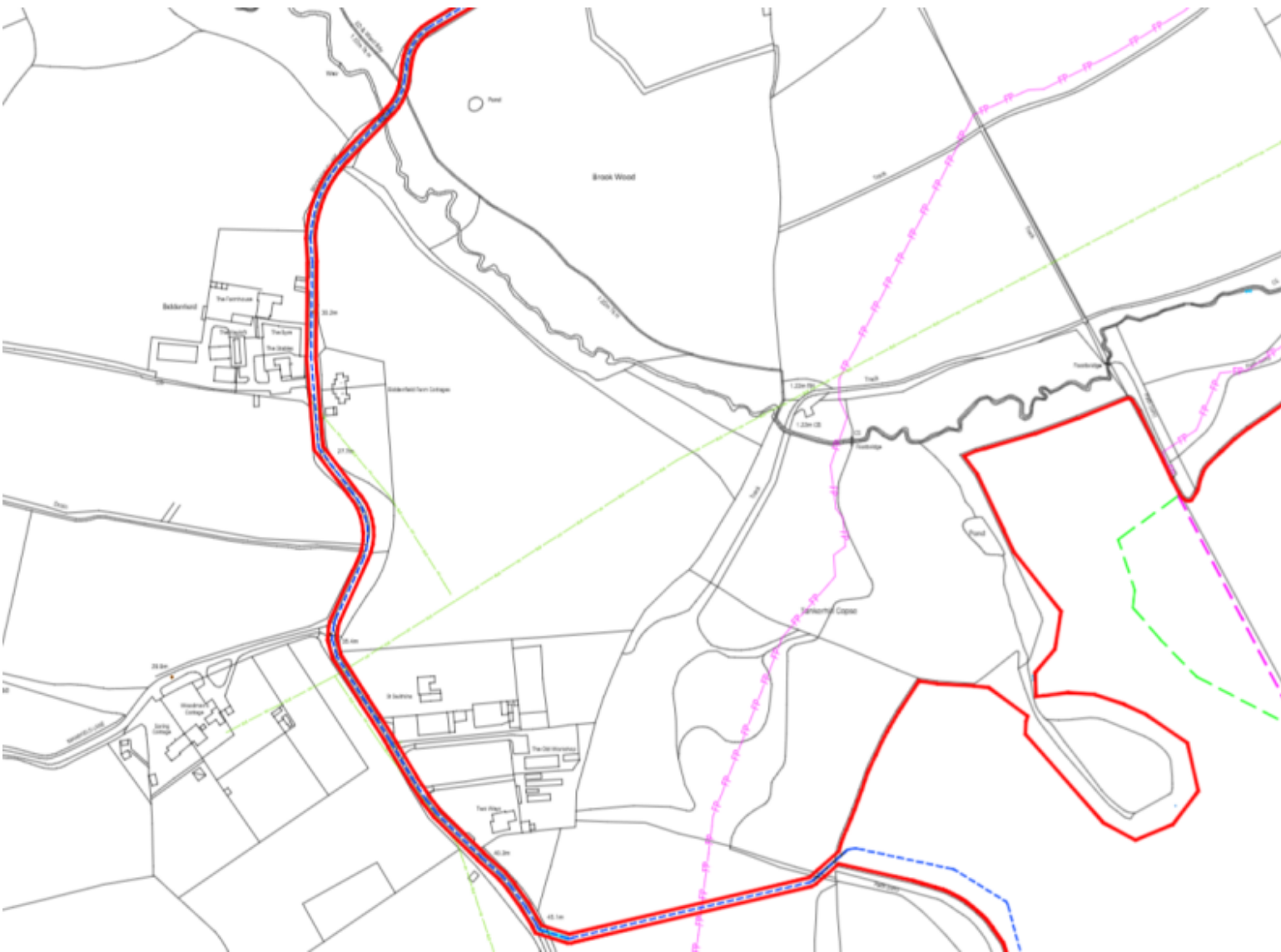




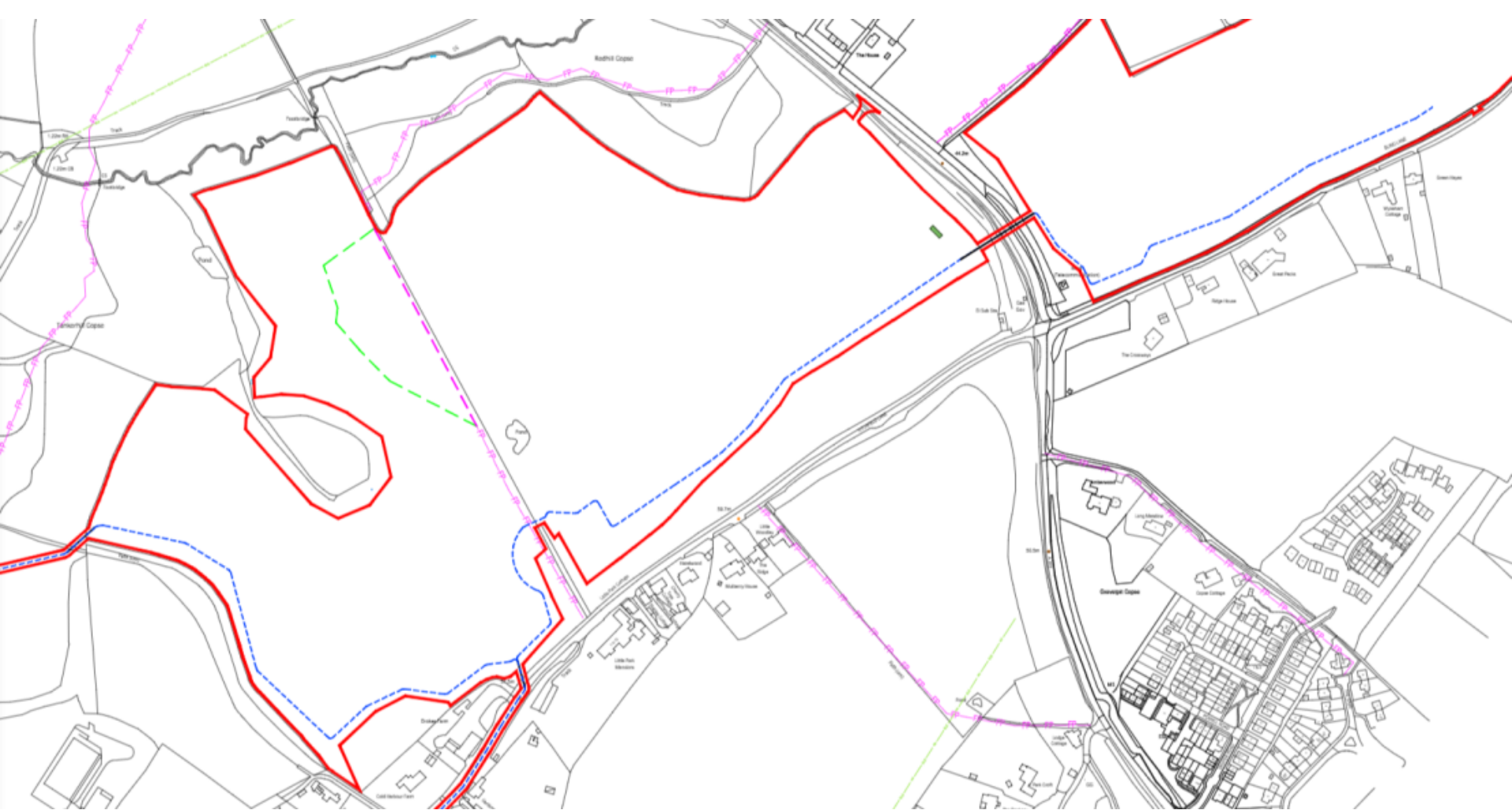


Proposed footpath change

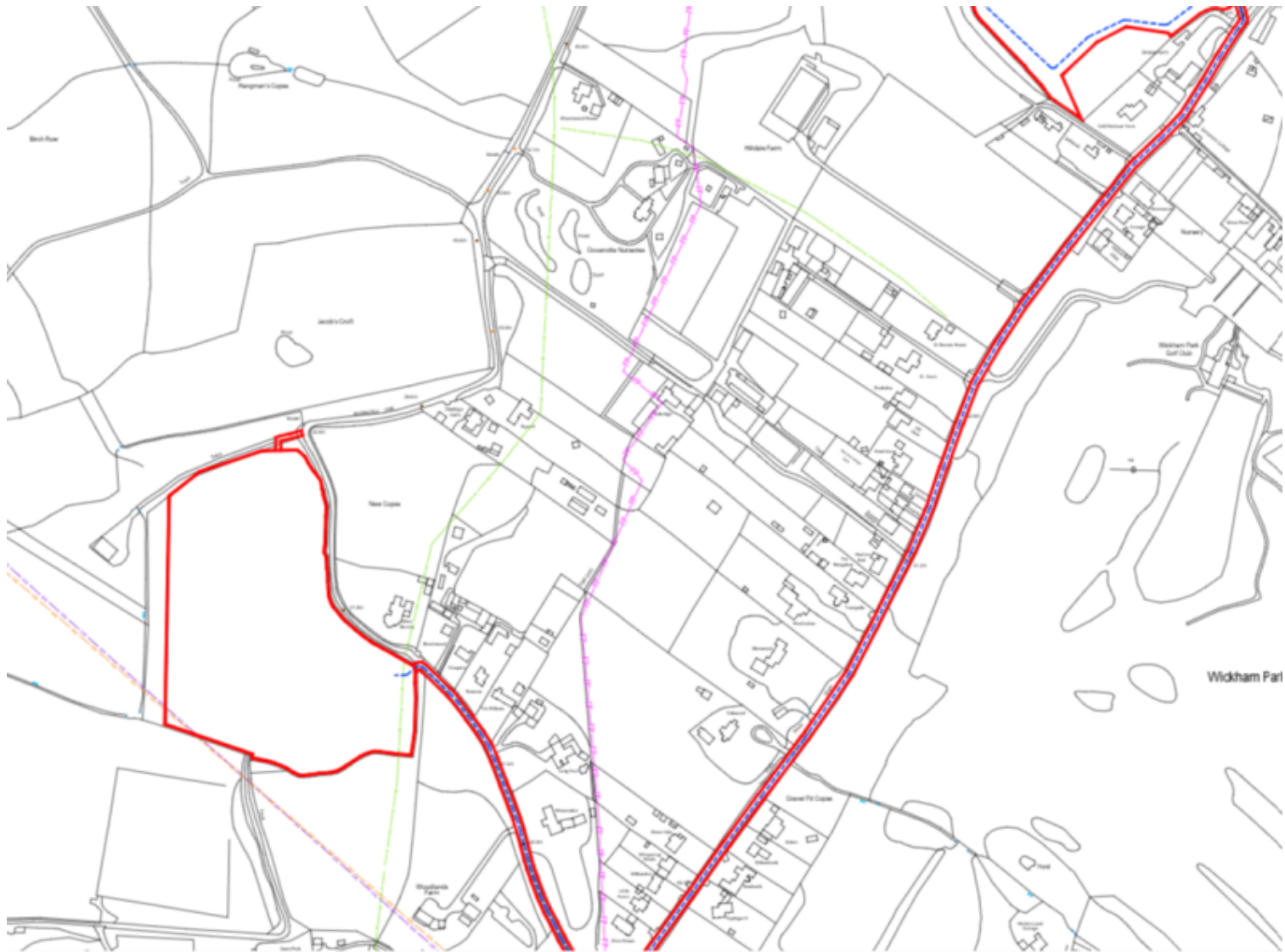




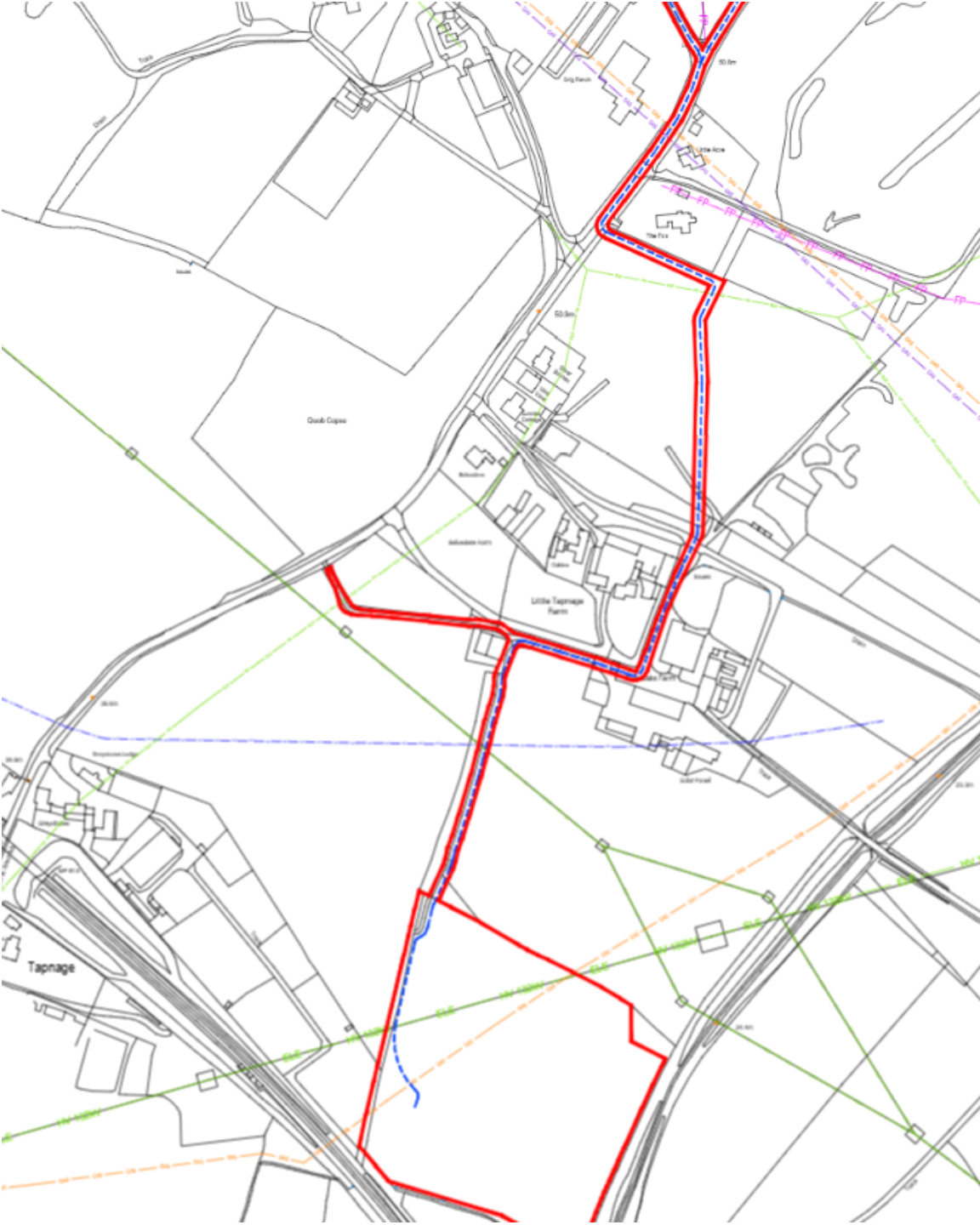
Illustrative cable routing - 2



Illustrative cable routing - 3



Illustrative cable routing - 4

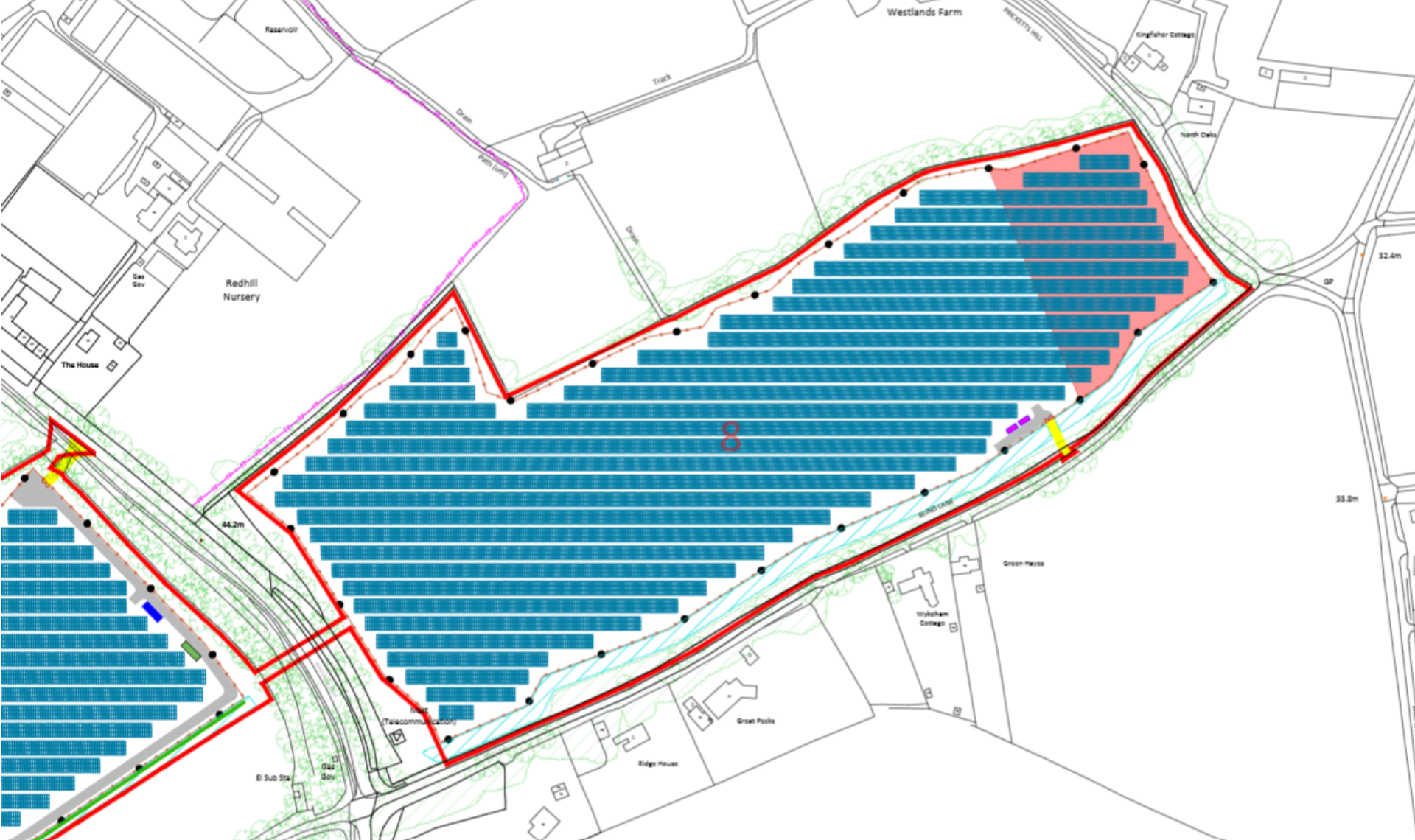


Illustrative cable routing - 5









Location of possible Southern Water Pipeline



View existing access road to
parcel 1



View across parcel 1 from NE
corner



View across parcel 1
toward Hall Court



View from western edge of
parcel 1 toward A334



View across parcel 2 from NE corner



View across parcel 2 from SW corner



View toward Hall Court from
gap in hedge at parcel 2



View across parcel 2 looking
south



View across parcel 3 looing
north



View across parcel 3



View across parcel 3 toward
parcel 4 and Shedfield
Equestrian Centre



View across parcel 4 looking
toward parcel 3



View across parcel 4 from
existing access track



View across parcel 4 from
existing access track



View of parcel 4 from
Shedfield Equestrian access



View across parcel 5 looking
SW



View across parcel 5 looking
east



View across parcel 6 looking north



View across parcel 6 looking toward Cold Harbour Farm



View across parcel 6 looking
north east toward parcel 7



View across parcel 7 looking
south to Titchfield Lane



Desire line of footpath
proposed to be re-routed to
follow.



View across Parcel 8 looking
west



View across Parcel 8 looking north toward PROW



View of existing boundary to parcel 8



View across Parcel 9 looking
north east



View across Parcel 9 north



View across Parcel 9 south



View of Parcel 9 existing access



View across Parcel 10 south
toward train line



View across Parcel 10
looking north from PROW

RECOMMENDATION - PERMIT